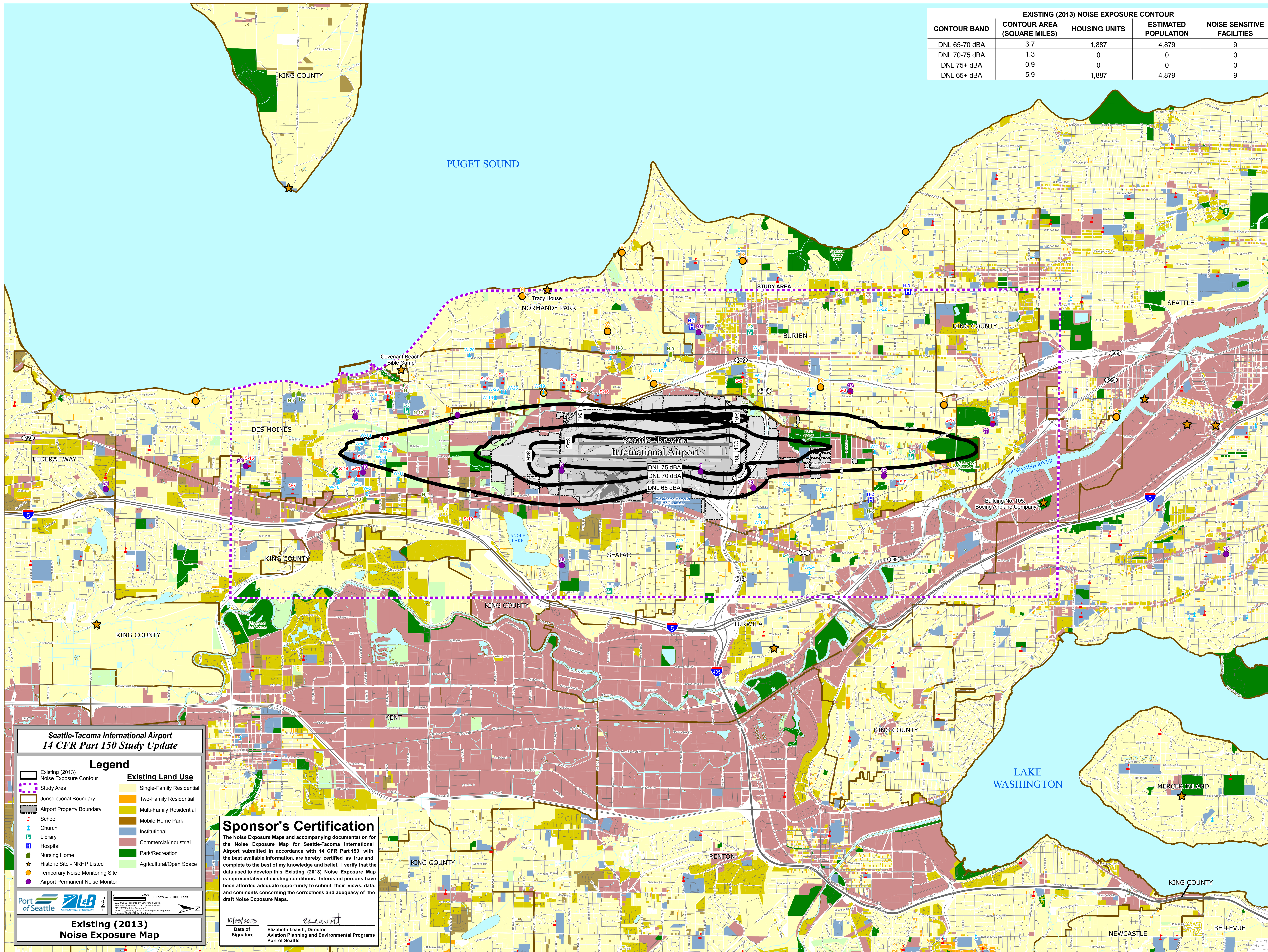


EXISTING (2013) NOISE EXPOSURE CONTOUR				
CONTOUR BAND	CONTOUR AREA (SQUARE MILES)	HOUSING UNITS	ESTIMATED POPULATION	NOISE SENSITIVE FACILITIES
DNL 65-70 dBA	3.7	1,887	4,879	9
DNL 70-75 dBA	1.3	0	0	0
DNL 75+ dBA	0.9	0	0	0
DNL 65+ dBA	5.9	1,887	4,879	9



**Seattle-Tacoma International Airport
14 CFR Part 150 Study Update**

Legend

Existing (2013) Noise Exposure Contour	Single-Family Residential
Study Area	Two-Family Residential
Jurisdictional Boundary	Multi-Family Residential
Airport Property Boundary	Mobile Home Park
School	Institutional
Church	Commercial/Industrial
Library	Park/Recreation
Hospital	Agricultural/Open Space
Nursing Home	
Historic Site - NRHP Listed	
Temporary Noise Monitoring Site	
Airport Permanent Noise Monitor	

Existing (2013) Noise Exposure Map

Sponsor's Certification

The Noise Exposure Maps and accompanying documentation for the Noise Exposure Map for Seattle-Tacoma International Airport submitted in accordance with 14 CFR Part 150 with the best available information, are hereby certified as true and complete to the best of my knowledge and belief. I verify that the data used to develop this Existing (2013) Noise Exposure Map is representative of existing conditions. Interested persons have been afforded adequate opportunity to submit their views, data, and comments concerning the correctness and adequacy of the draft Noise Exposure Maps.

10/23/2013
 Date of Signature: Elizabeth Leavitt, Director
 Aviation Planning and Environmental Programs
 Port of Seattle