

PURPOSE

THE PURPOSE OF THE GREATER HIGHLINE COMMUNITY PARKS BOARD  
IS TO REPRESENT THE COMMUNITY AND ASSIST IN THE DEVELOPMENT  
OF THE NORTH SEA-TAC PARK.

PLAN FOR PARK DEVELOPMENT

1. RECEIVE LETTER AGREEMENT FROM PORT OF SEATTLE
2. ORGANIZE COMMITTEES
3. RESTART FUND RAISER
4. START SITE DEVELOPMENT BY SPORTS GROUPS
5. START RECREATION ACTIVITIES IN SUNSET SCHOOL
6. START COMMUNITY CENTER
7. NEGOTIATE AND SIGN MASTER LEASE WHICH INCLUDES SUNSET SCHOOL
8. RECRUIT AND ORGANIZE NEW SPORTS GROUPS
9. HIRE CREW, CLEAN UP GARBAGE, PUT UP SIGNS, BLOCK VEHICULAR ACCESS,  
PLANT BUFFER STRIPS
10. PROVIDE SECURITY, INSURANCE
11. BUILD PARKING LOTS, SANITARY FACILITIES, SMALL CHILDREN PLAY ARENAS



HISTORY

PORT OF SEATTLE ACQUIRES LAND SERIOUSLY IMPACTED BY NOISE OF AIRPLANES ARRIVING AND LEAVING SEA-TAC AIRPORT

HIGHLINE RECREATION COUNCIL COMPLETES PRELIMINARY STUDY AND SUBMITS TO PORT OF SEATTLE

JANUARY 3, 1980 \$30,000 STUDY BY JONGELAN/GERRARD/McNEAL LEADING TO MASTER PLAN DEFINITION

JUNE 1, 1980 PORT OF SEATTLE TAKES POSSESSION OF SUNSET SCHOOL

JUNE 24, 1980 PORT OF SEATTLE COMMISSION APPROVES MASTER PLAN IN CONCEPT FOR PORT OWNED LANDS

JULY 15, 1980 HIGHLINE RECREATION COUNCIL AGREES TO REPRESENT THE COMMUNITY IN NORTH SEA-TAC PARK DEVELOPMENT. FACILITIES DEVELOPMENT COMMITTEE ORGANIZED.

SEPTEMBER 2, 1980 KING COUNTY APPROVES MASTER PLAN IN CONCEPT

DECEMBER 15, 1980 PORT OF SEATTLE SUGGESTS HIGHLINE RECREATION COUNCIL LEASE ALL THE LANDS OF NORTH SEA-TAC PARK. PORT ANNOUNCES IT WILL SELL SUNSET SCHOOL AND IF THERE ARE NO BIDDERS THE BUILDINGS WILL BE TORN DOWN. PORT SUGGESTS THE REC COUNCIL BID ON THE BUILDINGS

DECEMBER 20, 1980 KING COUNTY PARKS DIVISION VACATES SUNSET SCHOOL

JANUARY 5, 1981 GREATER HIGHLINE COMMUNITY PARKS BOARD ORGANIZED TO ACCEPT PARK LANDS LEASE AND TO BID ON SUNSET SCHOOL

MARCH 3, 1981 SUNSET SCHOOL BIDS OPENED. KING COUNTY BIDS \$1 ON GYM ONLY. PARKS BOARD BID ON ALL BUILDINGS CONTINGENT ON OBTAINING MASTER LEASE

*what about entire bldg.  
Bldgs.*

*what about the St. Archibald*

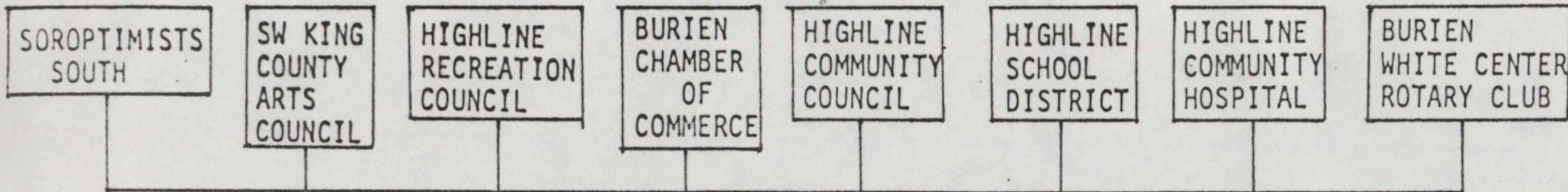


HISTORY (CONTINUED)

APRIL 28, 1981      PORT OF SEATTLE COMMISSIONERS APPROVE LEASE FOR 50 ACRES  
MAY 9, 1981        FIRST MEET OF NORTH SEA-TAC PARK BICYCLE MOTOCROSSERS  
APRIL 30, 1981     JOGGERS THURSDAY EVENING FUN RUNS BEGIN

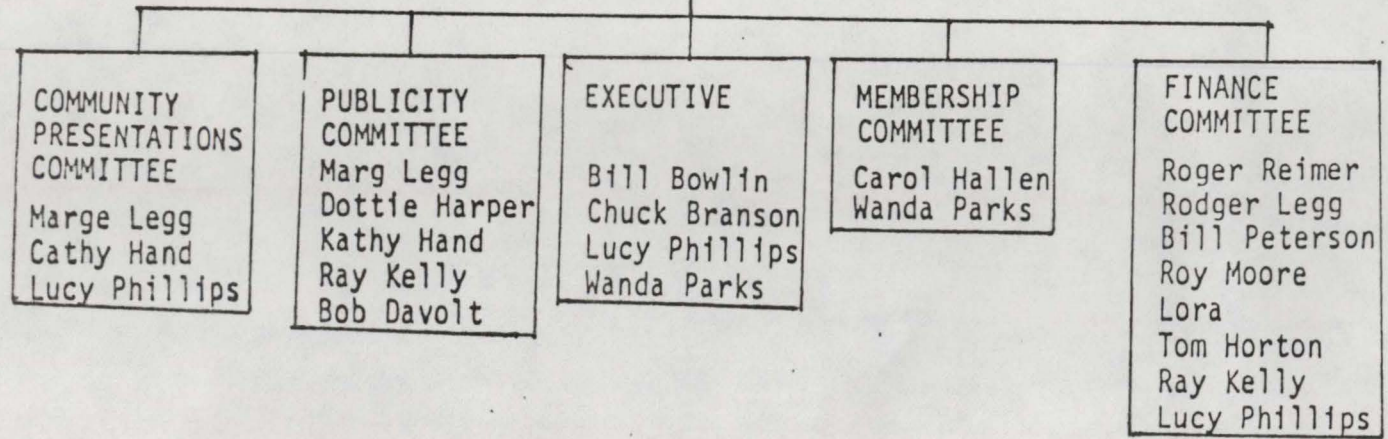
*55 acres?*

GREATHER HIGHLINE COMMUNITY



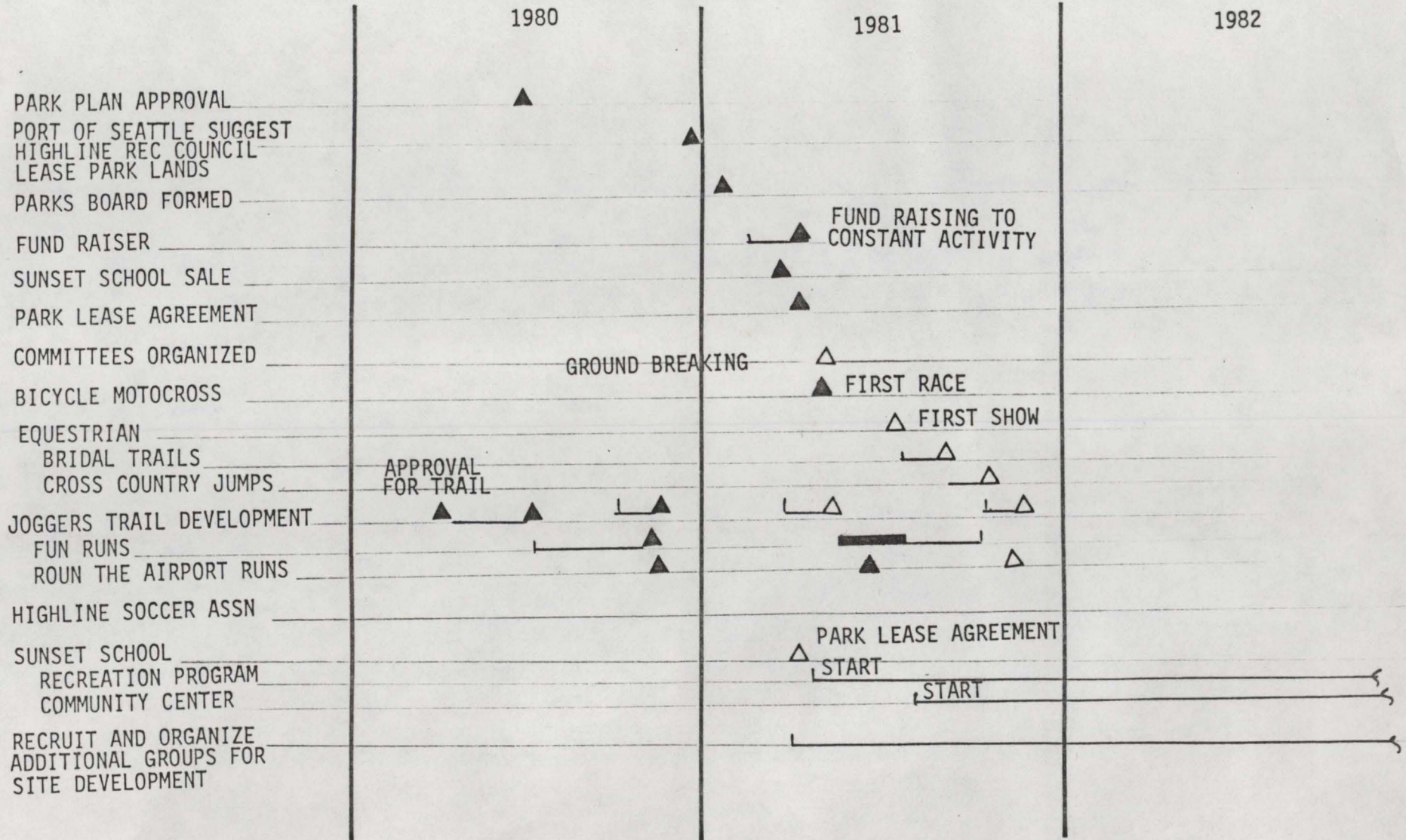
*citizen adjacent to park site?*

GREATHER HIGHLINE COMMUNITY PARKS BOARD





SCHEDULE





GROUPS WAITING TO START DEVELOPING NORTH SEA-TAC PARK

- NORTH SEA-TAC PARK BICYCLE MOTOCROSS CLUB (IN DEVELOPMENT AND IN USE) — MYRON REYNOLDS
- NORTH SEA-TAC PARK EQUESTRIAN ASSN — TINA HOLMES/JILL SEALLEY
- HIGHLINE SOCCER ASSN — KEN PETERSON
- NORTH SEA-TAC PARK JOGGERS — BILL BOWLIN
- HIGHLINE WEST LITTLE LEAGUE — SKEETER SCHWARTZ

*what about a permit for soccer in July?*

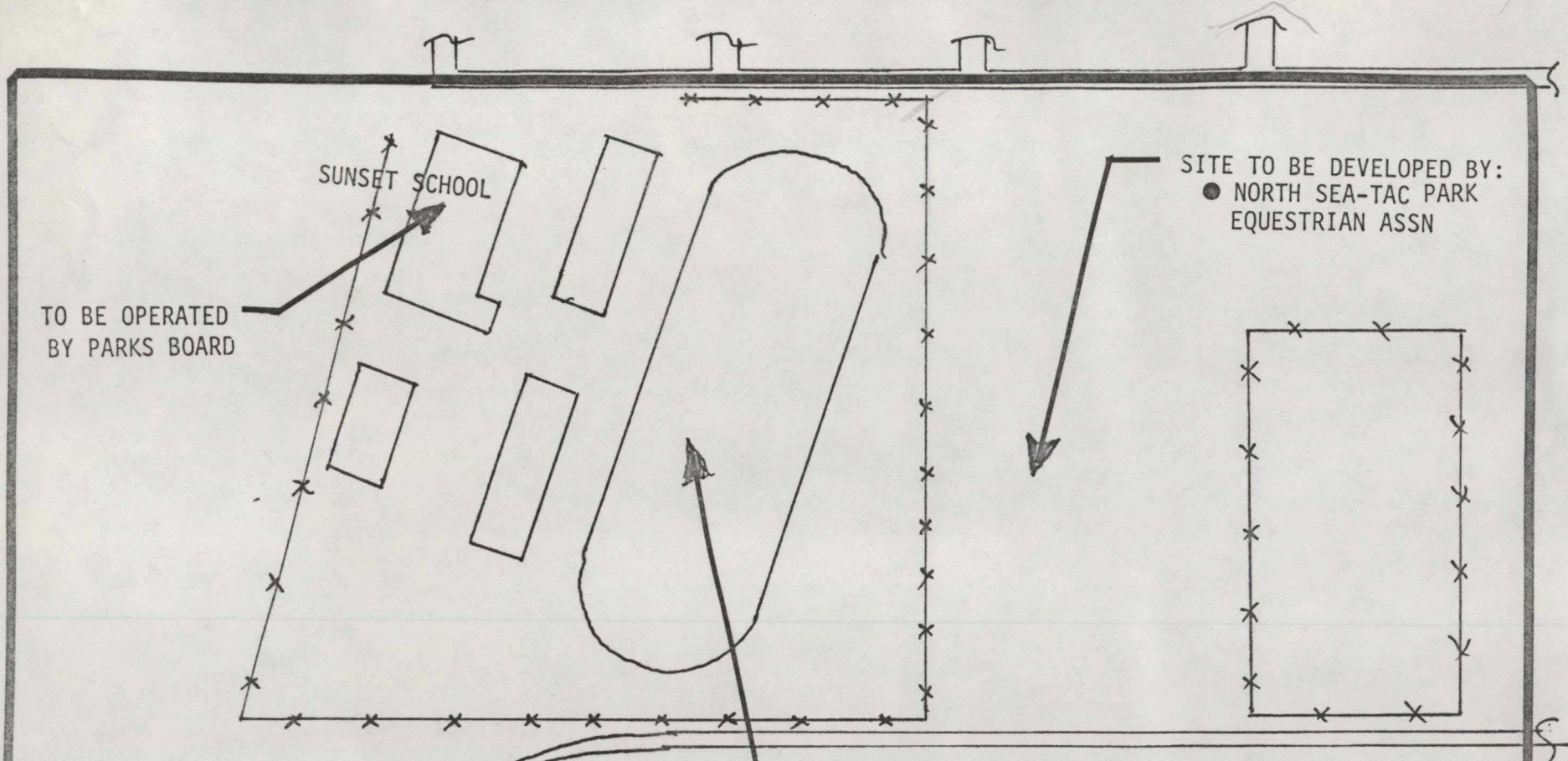
*250' by 150' - Olympic size show ring (200 people)*

- BURIEN LITTLE LEAGUE — VERN LOGAN
- NORTH SEA-TAC PARK ARCHERY CLUB — JAN SKILLINGSTEAD

*600' x 600' - approx 20<sup>th</sup> to 22<sup>nd</sup>. buffered 13<sup>th</sup> to moto cross site*



PROBLEM: FAA PEOPLE DENSITY GUIDELINES TOO RESTRICTIVE TO ALLOW ACTIVITIES



TO BE OPERATED  
BY PARKS BOARD

SUNSET SCHOOL

SITE TO BE DEVELOPED BY:  
● NORTH SEA-TAC PARK  
EQUESTRIAN ASSN

FAA PEOPLE DENSITY GUIDELINE IS  
2 PEOPLE PER ACRE

OVAL TRACK USED BY:  
● IMPERIAL DRUM AND BUGLE CORPS  
● MEN'S SOCCER ASSN  
● NORTH SEA-TAC PARK JOGGERS  
● KENNEDY HIGH SCHOOL TRACK TEAM



INTERIM SOLUTION

WE REQUEST THE PORT OF SEATTLE AND THE FAA TO PROVIDE AN INTERIM SOLUTION TO THE PROBLEM UNTIL THE RESULTS OF THE GUIDELINE STUDY COMMITTEE ARE AVAILABLE, PROBABLY IN OCTOBER.