

You are invited to help determine what your community wants and needs in the North End Clear Zone Recreation Master Plan.

Jongejan / Gerrard / Associates

Landscape Architects

will be conducting a meeting on

Tuesday - July 10, 1979 - 7:30 p.m.

at

Glacier High School Cafeteria

2450 S. 142nd

The kickoff meeting will define the Planning process, schedule & solicit your ideas regarding recreation in the acquisition area north of Sea-Tac Airport.

At this meeting we will be looking for volunteers to work with consultants, Port, County & their neighborhood considering recreation alternatives in biweekly meetings for 2 to 3 months.

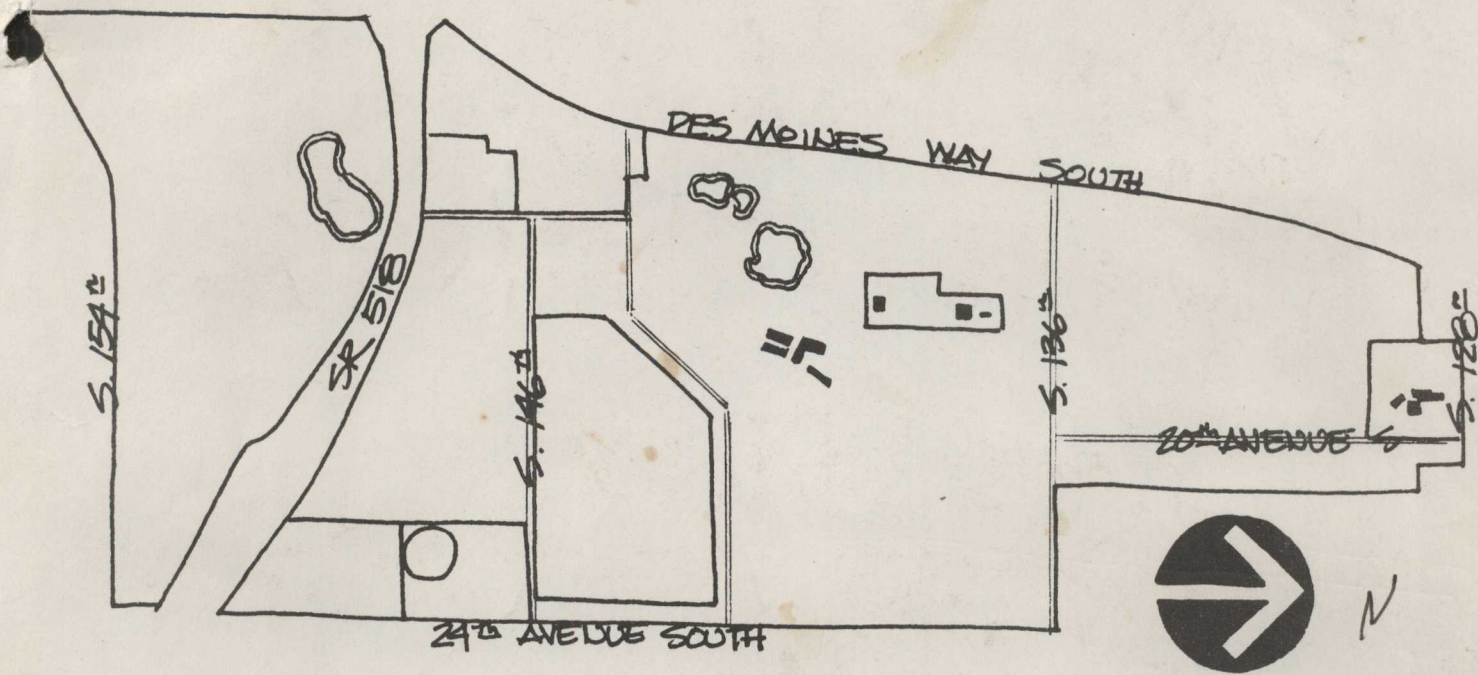
Two more general public meetings will be scheduled in August & October.

Thanks for Participating

250 people

Community

Oct. 30
7:30
Glacier
Cafeteria



Port of Seattle
 Planning & Research Dept.
 P. O. Box 1209
 Seattle, Washington 98111

BULK RATE
 U.S. POSTAGE
PAID
 Permit No. 2282
 SEATTLE, WA.

D

359860-0010-07 SB-
 DANA DAVID W & VIRGINIA E
 2648 SOUTH 142ND
 SEATTLE WA 98168

The North End Clear Zone Recreation Master Plan
 wants
YOU