

Serving all South King County — Renton, Auburn, Kent, Federal Way, Des Moines, Burien, Tukwila, Enumclaw, White Center, Kennedydale, Maple Valley, Normandy Park, Algona, Pacific and Black Diamond.



Linda Schwider and her children, Amy, 8, and Ward, 10, check out a lamb which was a breech delivery and its ewe.

Staff photo by Bruce McKim

## Federal Way levy dangling

by Cathy Reiner  
south Times bureau

**FEDERAL WAY** — The fate of the \$5.4 million school levy here may be hanging on less than 100 absentee ballots, school district officials said last night.

By their figures the levy measure received a 59.7 per cent approval, and the additional absenteees could push the measure over the needed 60 per cent approval figure.

But Don Perrin, King County elections superintendent, wasn't so sure.

Either way the official counting, including absentees, was expected to be finished late today.

Last night school officials were tallying 4,524 yes votes and 3,049 no votes for the levy, said Sharon Sauve, school communications specialist. With that number and 95 absenteees to be counted, 80 more yes votes would pass the levy.

But at the county elections bureau Perrin's final but unofficial totals stood at 4,440 yes and 3,045 no votes. That meant even if all the absenteees came in yes, the measure still would be about 20 votes short of topping the 60 per cent mark.

Perrin said the absentee ballots were to be opened and the entire vote count rechecked and validated late today.

The uncertainty left a dim pallor over the school officials, teachers, students and parents standing around the school district offices last night.

"We're still optimistic," said School Supt. Milton Snyder as the last precincts reported their

counts. "No matter what, this is the strongest approval this district has had for a levy in many years."

In the past six years, 10 levies and 11 bond issue proposals have been turned down consistently by voters in this suburban community.

Snyder, mid-way through his first year as superintendent, had been that optimistic that long-needed school levy could pass on its first try. If not, he said, it will be submitted to the voters again.

Six years of red-lined budgets has meant the district repeatedly deferred maintenance on school buildings and equipment.

And until last year, when the state's basic funding act pumped enough money in to bring school programs back up to snuff, the levy failures meant the district's three high schools and three junior highs were unaccredited.

One of the problems facing this year's levy was that many Federal Way residents believed that state basic funding should cover all school costs.

In reality it covers basic education, leaving the districts to foot the bills for any extra classes, programs and transportation costs.

In the case of Federal Way, basic funding reinstated programs and more than 250 teachers and staffers, but left no money for repairing six years of neglect to dilapidated school buildings and equipment.

If the levy does pass, property owners in Federal Way will pay \$1.40 per \$1,000 of assessed valuation — one of the lowest school-tax rates in the county.

## Counting sheep at night — new ones

by Cathy Reiner  
south Times bureau

**MAPLE VALLEY** — The intercom in Linda and Al Schwider's bedroom is connected to their barn. At night it's turned up loud so they can hear emergencies.

In recent weeks those emergencies have been coming frequently as more than 20 of their ewes have given birth to 32 lambs. One or both of the Schwider adults have been in attendance at most of the births and they have assisted in the deliveries many times.

Last Thursday, in fact, Linda and a "city-bred" friend spent most of the morning on a breech delivery. The friend, who had had little experience with animals, held the ewe's head while Linda struggled at the other end trying to get the tiny lamb's legs untangled and out of its mother.

"That was the first birth we've called the vet on," she explained afterwards. "But by the time he got here the lamb was born. Mother and baby were both fine. I was exhausted and covered with blood."

That afternoon things were back to normal and the two younger Schwiders, Ward, 10, and Amy, 8, were eager to show visitors around their new homestead.

The Schwiders are veterans of just over a year as shepherds. On their rolling 15-acre farm they have more than 50 Romney sheep,

### MAPLE VALLEY

nine head of cattle, a pregnant mare, a large dog, several cats, dozens of chickens and rabbits and a good-sized vegetable garden.

Looking at their pleasant ranch-style home and gazing out across the fields to the grazing sheep and cattle, it is easy to believe the family always has ranches this spot.

Linda smiled ruefully as she talked of moving to Maple Valley 18 months ago.

"We don't like to tell people we'd come from California, but we lived in Los Angeles for 13 years. Before that we were from the Pacific Northwest. I was raised on an Eastern Oregon farm and we both went to college in Oregon."

"After we got married we spent every vacation coming back to my parents' farm. Now we've finally got our own farm — our dream — and we have to take a vacation to get away."

Raising animals, particularly sheep, is more than a hobby but less than a full-time occupation for the Schwiders. During the day Al is an engineer at The Boeing Co.'s Renton plant.

After the chores, Linda might be found painting (she has a degree in biological

illustrating and does some commission work), working the large vegetable garden or planning how to change the 1910 farmhouse that still stands next to the newer house into an art studio.

Ward and Amy are responsible for feedings and roundups as well as general chores.

After this week, when the whole family plans to spend hours shearing the thick wool off their sheep, Linda hopes to spend time spinning some of that wool into yarn.

But most of the wool will be sold through the Puget Sound Wool Growers Association, which sells to commercial mills. Many of the rams will be butchered and sold for meat. The ewes will be kept to build up the flock for next year.

A few of the sheep also will be sold at the Shepherd's Extravaganza May 25 and 26 at the annual Folk Life Festival in Seattle Center.

The Schwiders are excited about the Extravaganza, which will include spinning and weaving demonstrations, workshops, sheep and fleece sales and contests.

Linda hopes she will be able to participate in the Sheep-to-Shawl competition which will take the wool from shearing to combing, spinning and knitting.

(More details and photos, G 2.)

## No annexation, says Riverton

by Cathy Reiner  
south Times bureau

**TUKWILA** — Voters in Riverton last night turned thumbs down on a proposal to annex their small, semi-rural community to their citywide next-door neighbor.

It was an overwhelming defeat as 63 per cent of the voters, or 177, voted against the annexation. There were 104 votes for joining the city.

"We got a strong answer, the people turned out and let everyone know we want to remain part of the county — not a city," said Donna Meagher, co-chairman of the anti-annexation forces. "It took a lot of effort but we did it."

Shirley Robinson, one of the early leaders in the drive to annex the neighborhood to Tukwila, said

the central issue had been zoning, local control and the fight against spreading industrial and commercial growth in the residential neighborhood.

"We may have lost, but at least we got the people out, we got them aware of the issues," she said. "Even if they don't want to join the city, at least maybe they will be more aware of county policies and county government."

The 900-resident, 272-acre neighborhood, just northwest of Tukwila between Highway 99, the Duwamish River and I-5, is the second neighborhood to vote down annexation to Tukwila.

Last month residents in Crestview, a slightly larger community south of Riverton, also voted to remain in the county.

## Funds added for airport clear zone

by Cathy Reiner  
south Times bureau

**SEATTLE-TACOMA AIRPORT** — A \$6 million grant from the federal Airport Development Aid Program (A.D.A.P.) and a matching \$4 million from airport revenue-sharing-bonds means Phase IV of the airport land-acquisition program can continue on schedule, Senator Warren G. Magnuson announced at a Port Commission meeting yesterday.

The grant money, although less than the \$12 million requested by the Port, will be used to continue purchasing homes and property in the Federal Aviation Administration-designated "clear zones" north and south of the airport. Those properties are in areas where the F.A.A., the county and the Port have judged noise problems from overhead planes are so great that the areas must be cleared.

Acknowledging that the \$6 million in federal money is just half of what the port had hoped for, Senator Magnuson said he "thinks" there will be another \$6 million coming in 1981.

"We know even that's not enough to solve all the noise problems," he said. "But we hope it will go a long way."

### SEA-TAC

The state's senior senator reminded listeners that the money comes not from taxes, but from a fund set up by Congress and the airlines to pay for noise problems caused by planes.

Phase IV of the land-acquisition program is the designation for most properties south of South 136th Street and north of South 210th Street, roughly between Des Moines Way South and 24th Avenue South, Don Shay, director of aviation for the Port, explained.

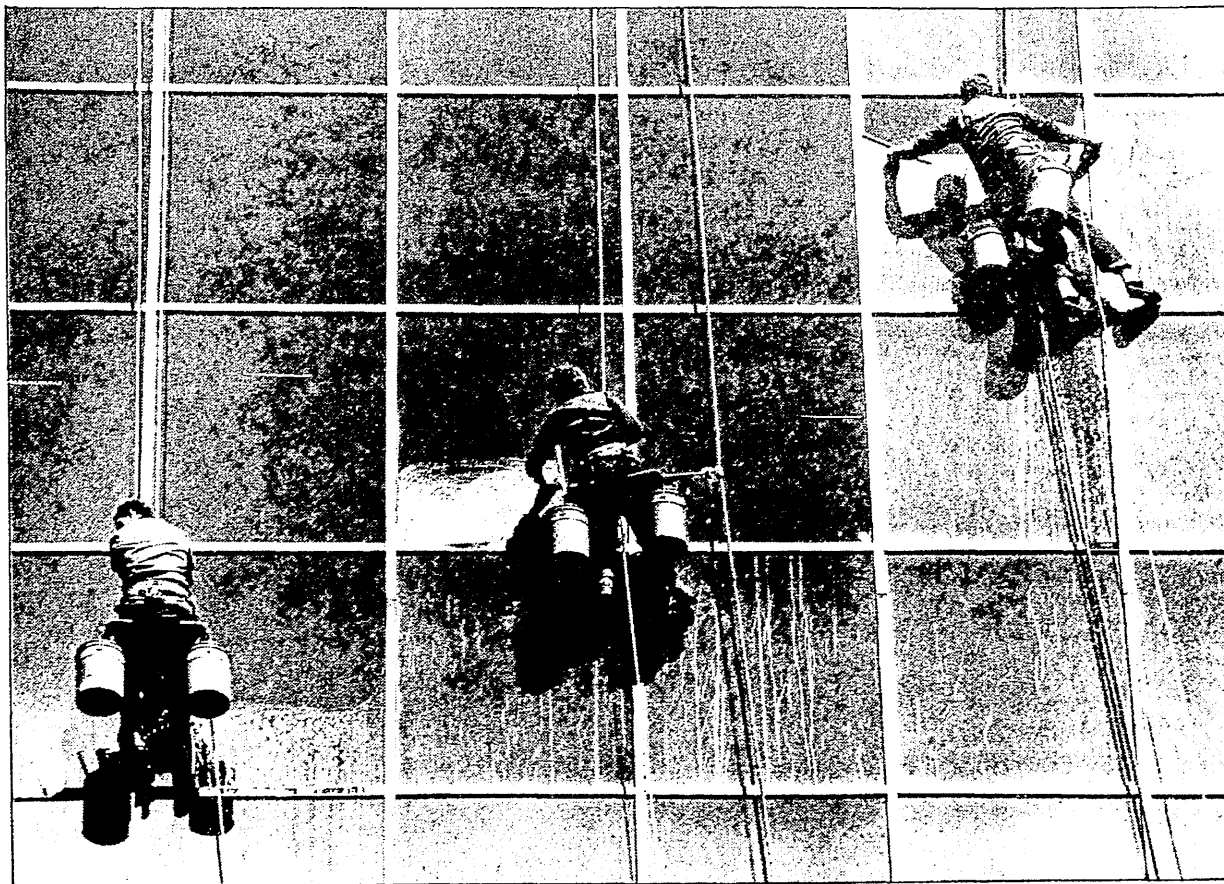
"Since 1975 the Highline community has received \$11.1 million in A.D.A.P. funds plus a matching \$5.5 million in revenue-sharing bonds for noise abatement," he said. "That money has purchased 406 homes, at a rate of about 100 a year."

"Most of those have been moved out of the clear zone."

Shay said an additional 291 homes are to be acquired in the next two years.

Dick Ford, executive director of the Port, warned the commissioners that still more study will be

(Continued on G 2.)



### Wash day

Newly installed windows at the Tower II Building across from Seattle-Tacoma Airport get a good scrubbing.

Staff photo by Greg Gilbert

Pros and cons of general-aviation airport

G 4 SOUTH COUNTY

East Hill residents establish 'block watch'

G 7 KENT

Possible school closure agitates Earlington area

G 7 RENTON