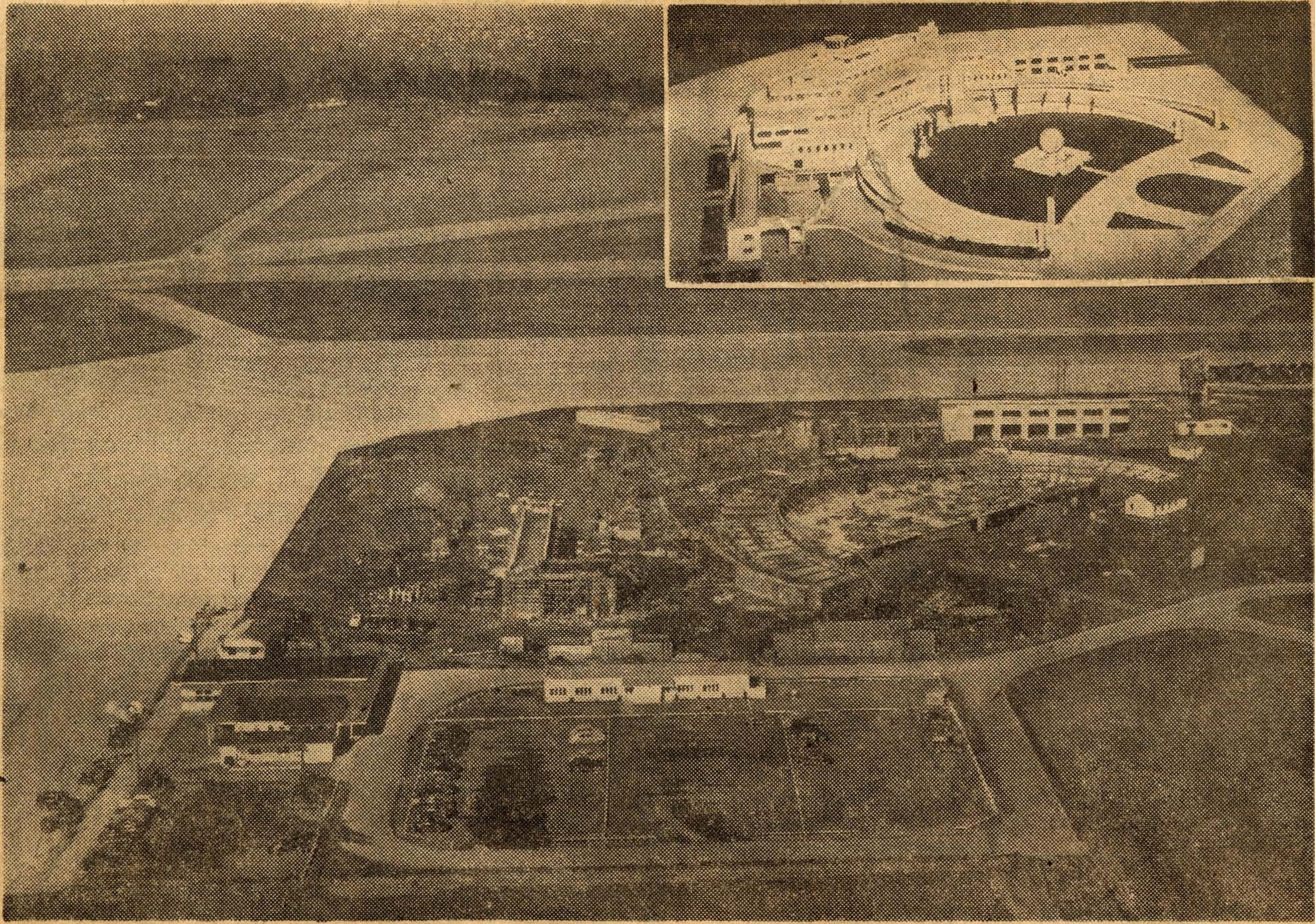
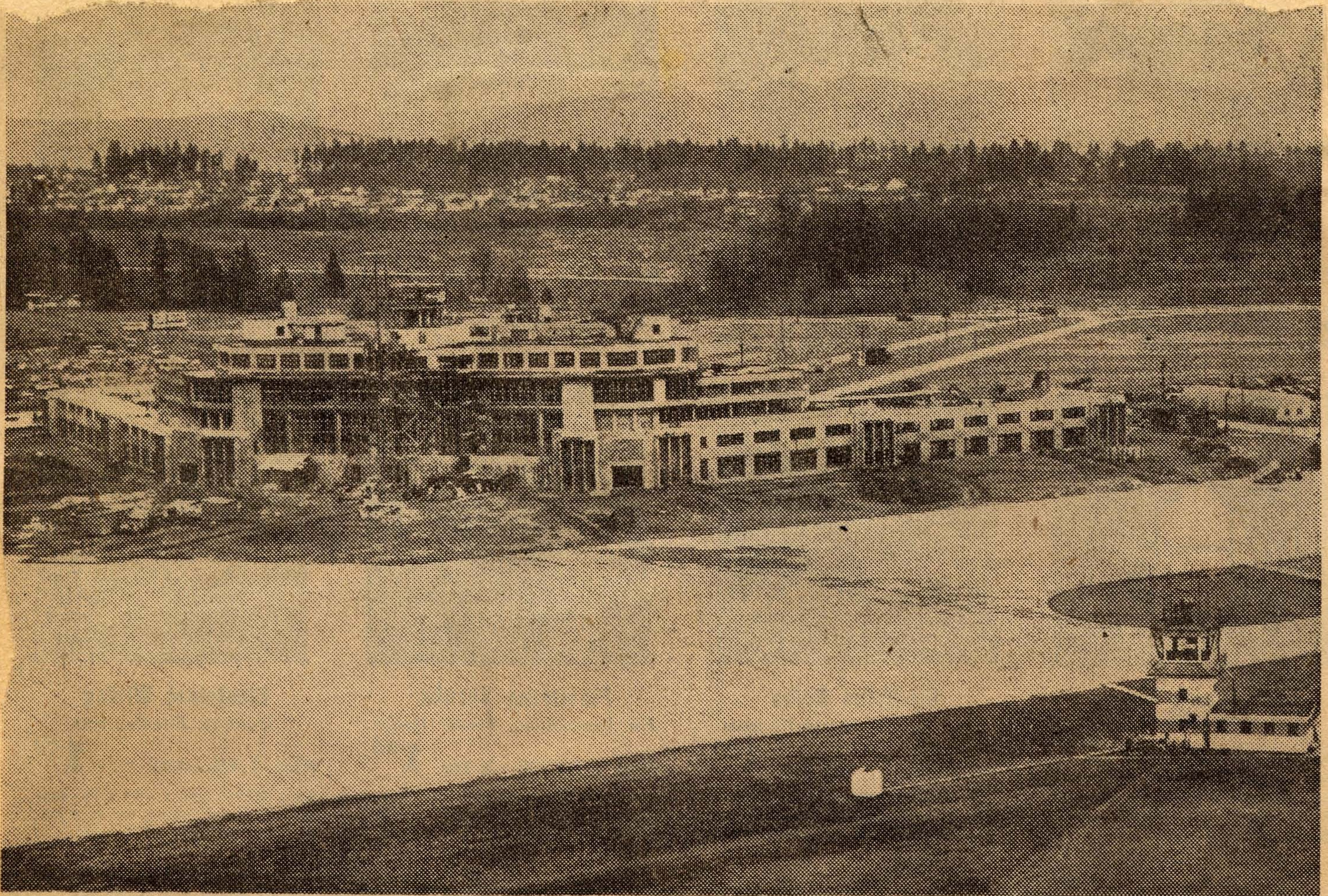


Main Building at Bow Lake Taking Form



Pouring concrete for wings of the administration building at the Seattle-Tacoma Airport at Bow Lake was completed last week, and the contractor has begun removing wooden forms from the north and south structures. This aerial photograph shows the entire project, which will be completed in March, 1949. Inset, a

model of the completed model. The wings will be finished and ready for occupancy in four or five months, according to George T. Treadwell, chief engineer for the Port of Seattle. Next job on schedule is the concrete pour for the center roadway and first floor of the main building.



AIR TERMINAL: This aerial picture shows the administration building at the Seattle-Tacoma Airport at Bow Lake, which rapidly is nearing completion. Dedication ceremonies for the field, one of the most modern in the nation, are expected early in July.