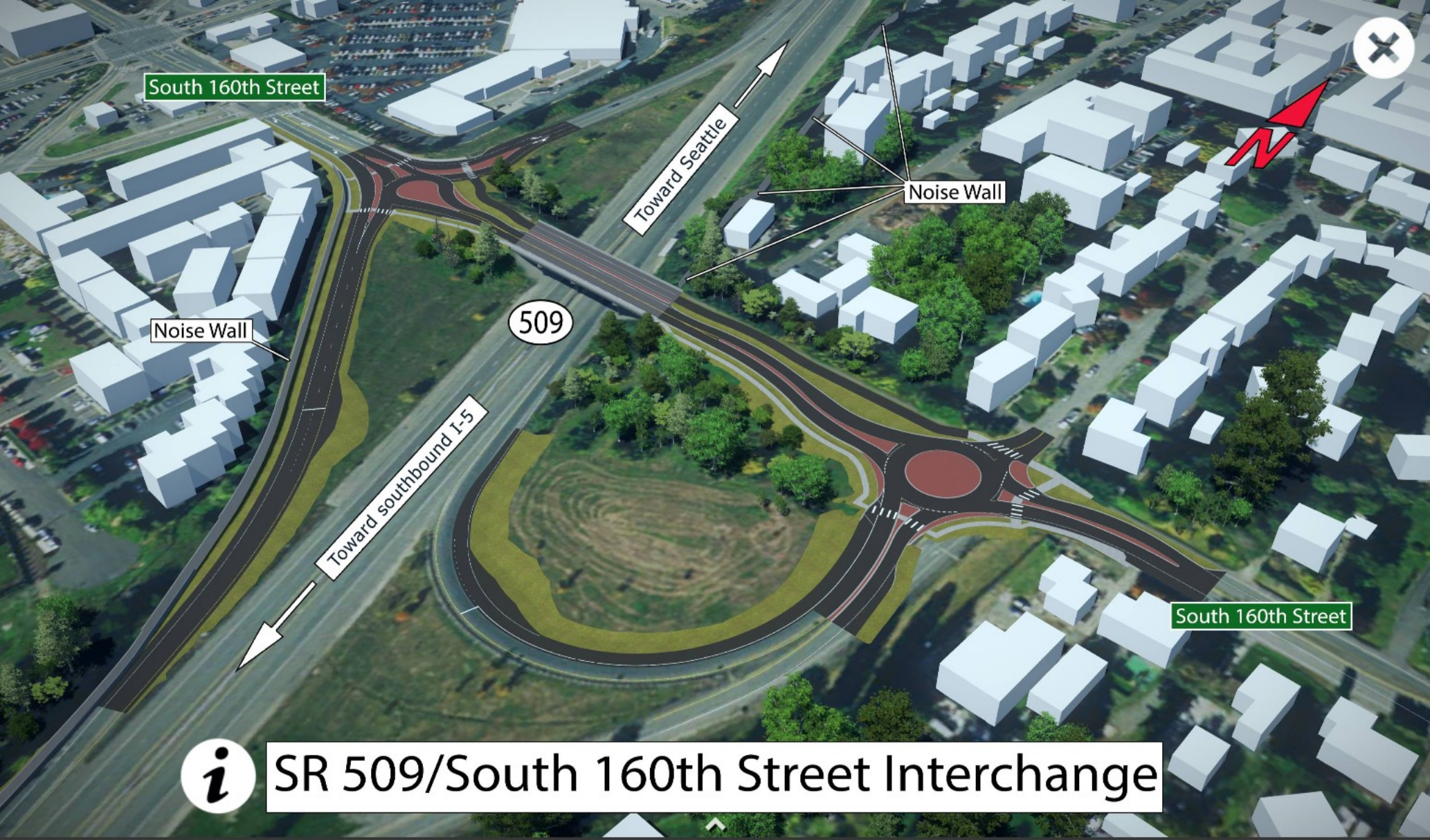


SR 509 Completion Project 24th Ave. S. to S. 160th St.



(click yellow stars for rendered views and information)





South 160th Street

Toward Seattle

Noise Wall

Noise Wall

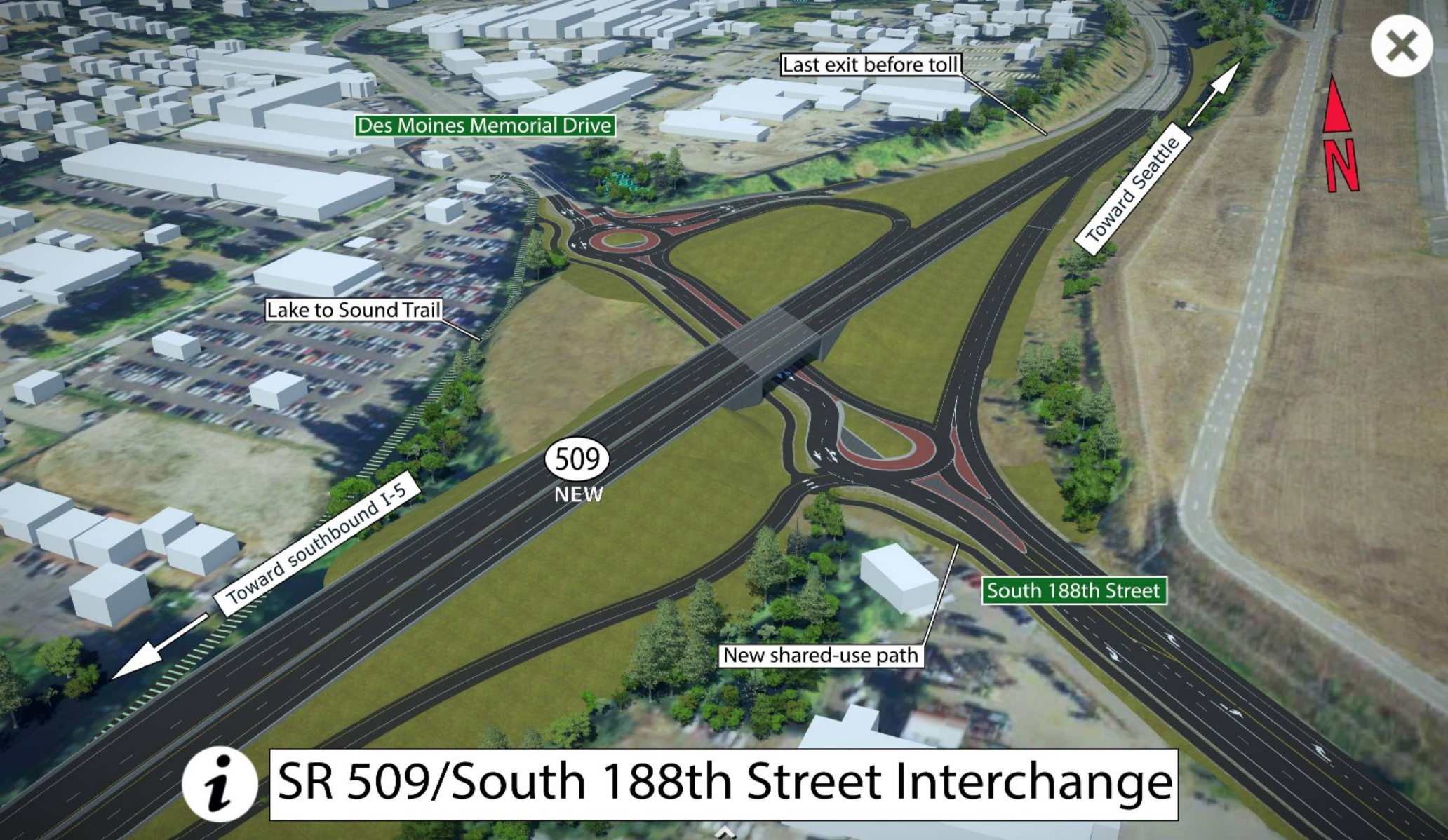
509

Toward southbound I-5

South 160th Street



SR 509/South 160th Street Interchange



Des Moines Memorial Drive

Last exit before toll

Lake to Sound Trail

Toward Seattle

Toward southbound I-5

509
NEW

South 188th Street

New shared-use path



SR 509/South 188th Street Interchange





Lake to Sound Trail

509
NEW

Wetland area

Des Moines Memorial Drive

Lake to Sound Trail

★
AMB wetland mitigation site

i SeaTac wetland mitigation site



Des Moines Memorial Drive

South 192nd Street

509
NEW

Lake to Sound Trail



SR 509 / South 192nd Street





S. 200th St.

509
NEW

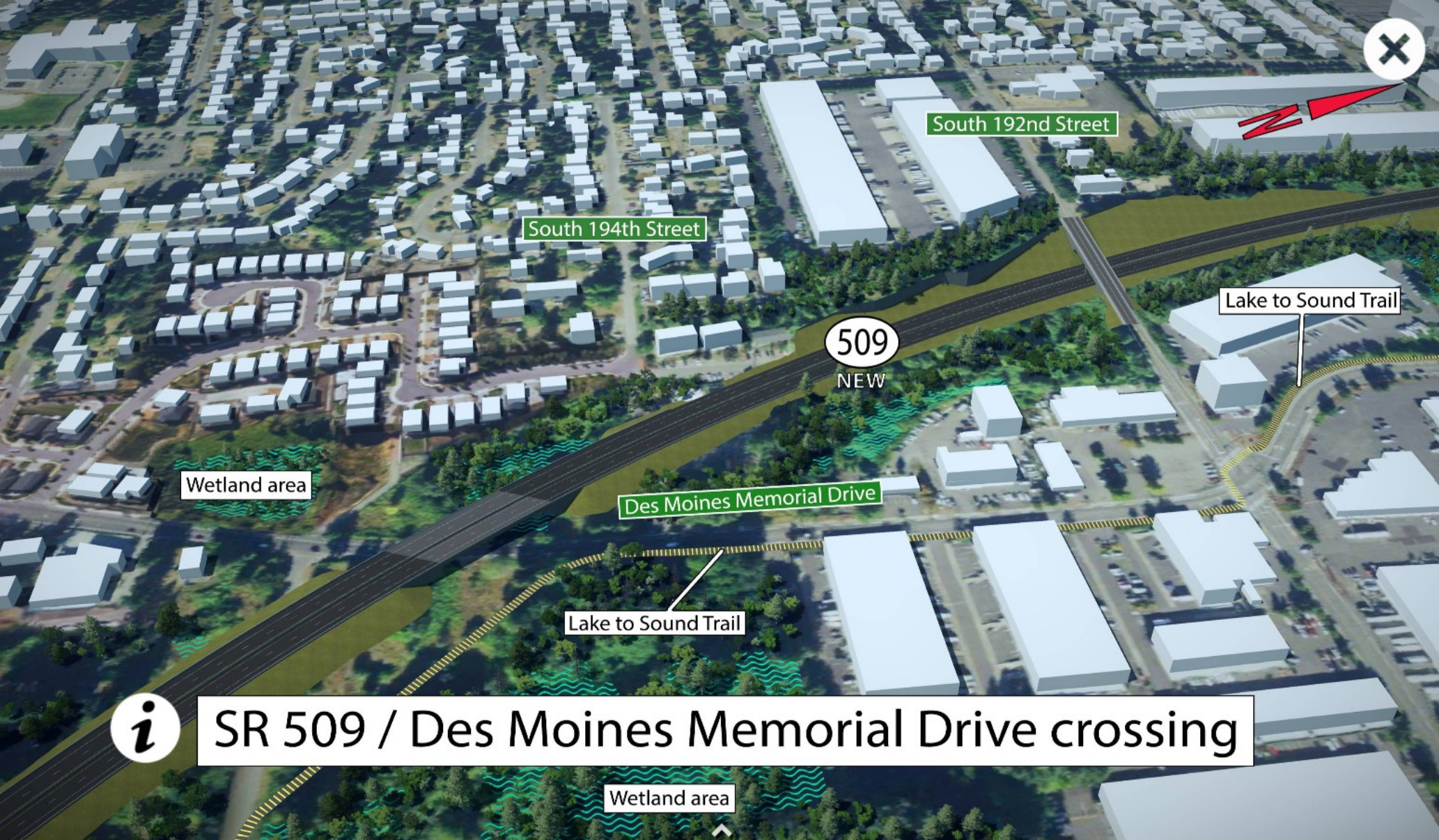
Hillgrove
Cemetery

Lake to Sound Trail

Wetland area



Lake to Sound Trail at 18th Avenue South/South 196th Street



South 192nd Street

South 194th Street

509
NEW

Lake to Sound Trail

Wetland area

Des Moines Memorial Drive

Lake to Sound Trail



SR 509 / Des Moines Memorial Drive crossing

Wetland area

Wetland area

Wetland area

New Lake to Sound Trail

Des Moines Creek

Des Moines Creek Trail connects to new Lake to Sound Trail

South 200th Street

509
NEW

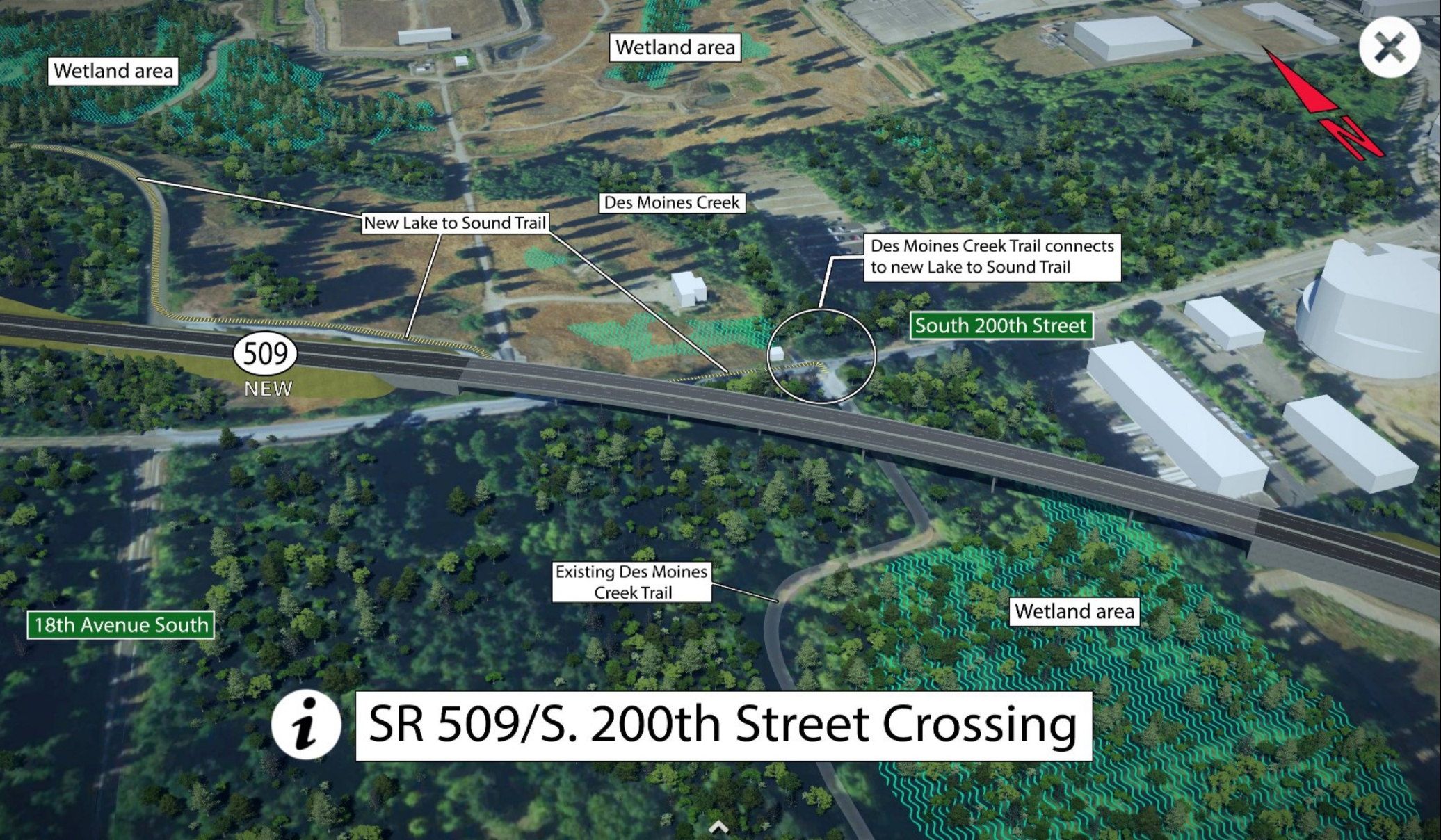
18th Avenue South

Existing Des Moines
Creek Trail

Wetland area



SR 509/S. 200th Street Crossing



509
NEW

Wetland area

24th Avenue South

Toward Sea-Tac Airport

Toward southbound I-5

99



SR 509/24th Avenue South Interchange

