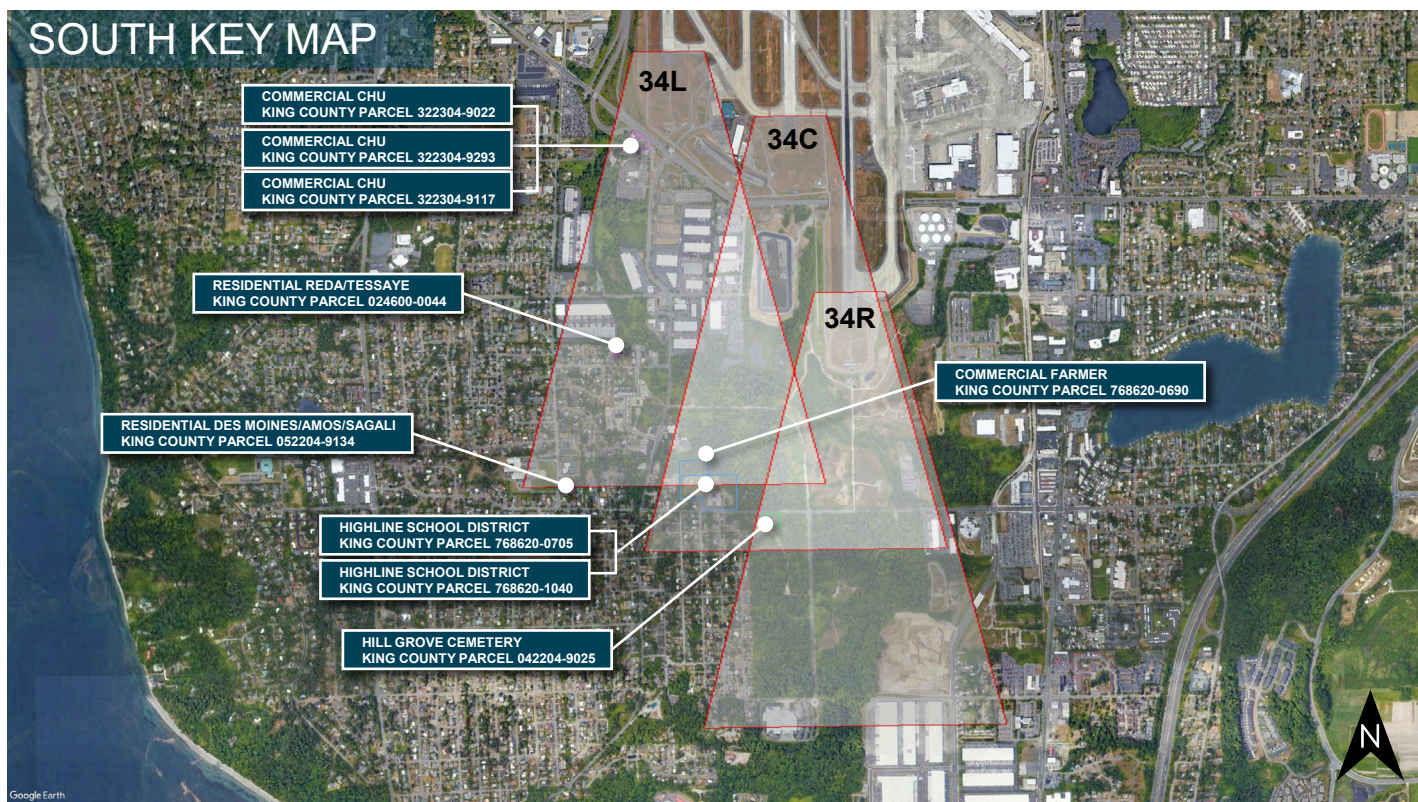
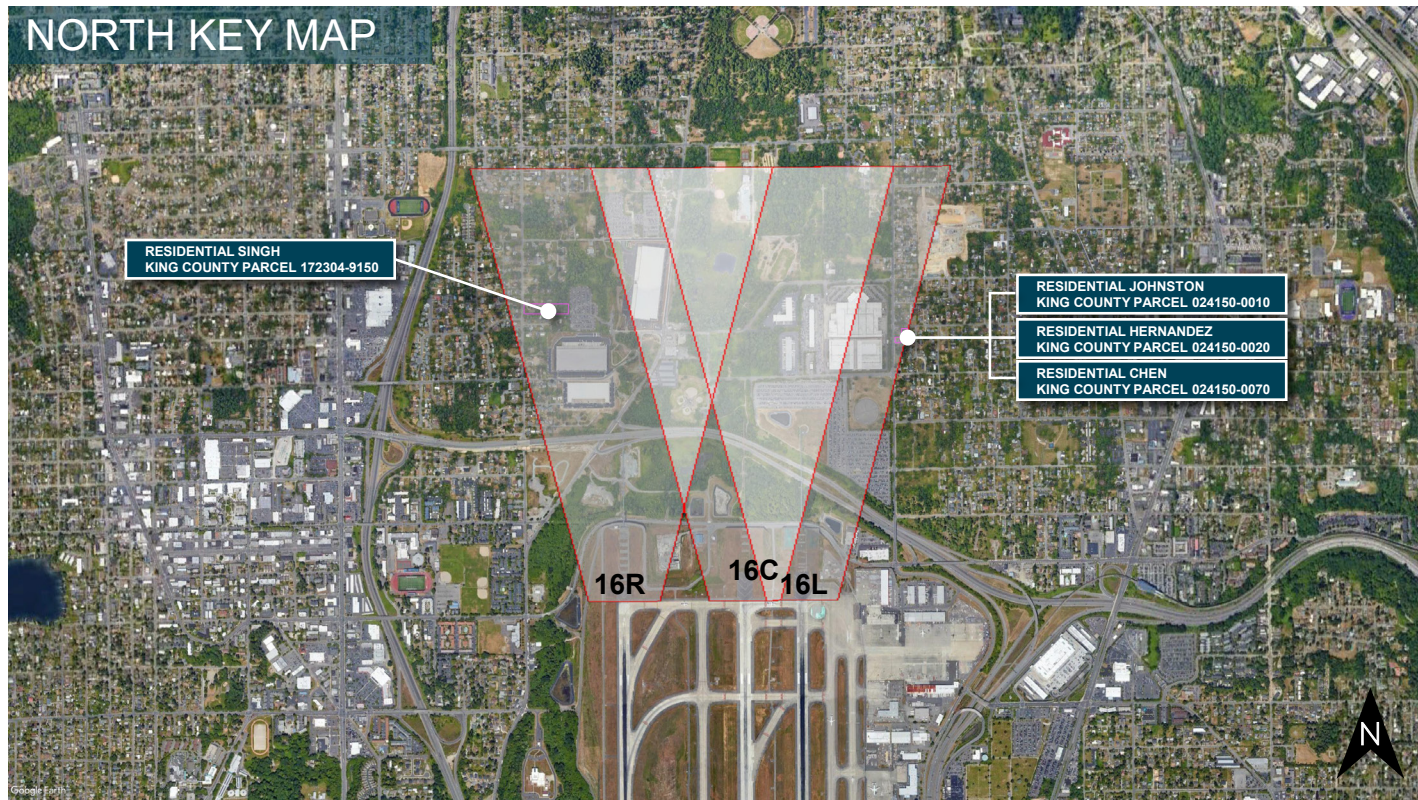


Aviation Easement Analysis – Off Airport Properties

Seattle-Tacoma International Airport

Version Date: March 12, 2020



HIGHLINE SCHOOL DISTRICT

KING COUNTY PARCEL 768620-0705

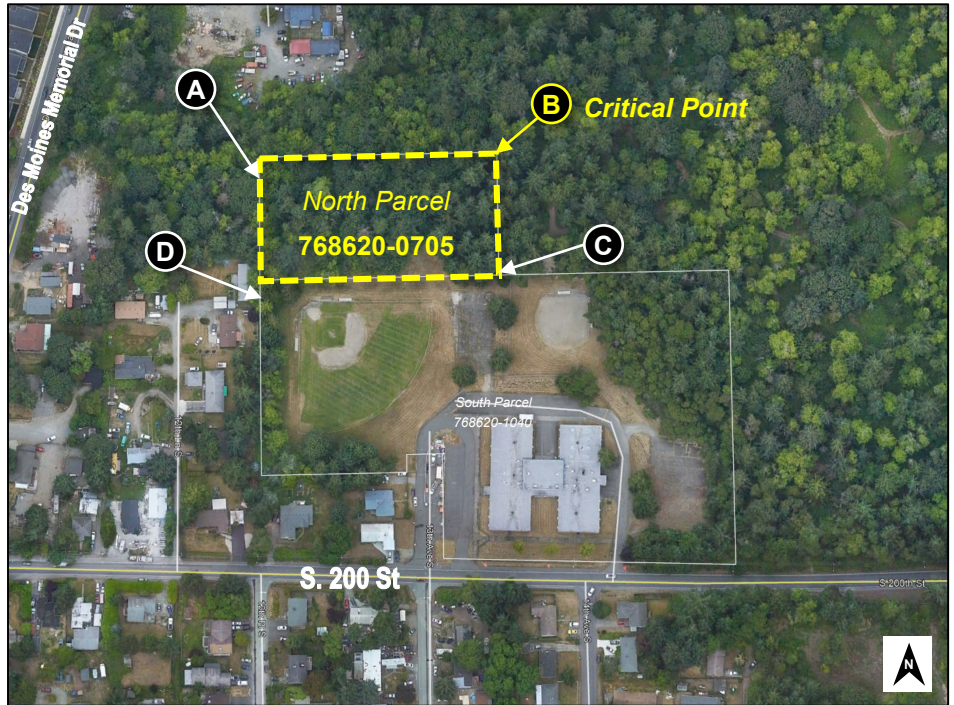
Property Line Detail

	DMS North Latitude	DMS West Longitude	Approach Surface Elev. (MSL)	Departure Surface Elev. (MSL)
A	47 25 29.36 N	-122 19 04.43 W	50-1:466 ft TSS: 519 ft	40-1: 482 ft LCI: 508 ft
B	47 25 29.39 N	-122 18 58.54 W	INTR: 461 ft TSS: 518 ft	40-1: 482 ft LCI: 508 ft
C	47 25 27.32 N	-122 18 58.51 W	50-1:459 ft TSS: 524 ft	40-1: 488 ft LCI: 508 ft
D	47 25 27.29 N	-122 19 04.40 W	50-1:471 ft TSS: 525 ft	40-1: 488 ft LCI: 508 ft

50-1 = Part 77 Inner Approach
INTR = Part 77 Inner Transitional
TSS = Threshold Sitting Surface
40-1 = Departure Surface
LCI = Low Close-in

Notes:

Point B: Critical point along edge of parcel boundary, closest to the Runway Threshold and Runway Centerline



Note: The graphical boundary for the properties shown are calculated from the available records and have not been field verified.

Obstacle Detail

0 Trees Remaining in North Parcel (7 removed in JOC-Package1-SD5)

Avigation Easement Analysis														
Parcel Information	#	Tree ID	DMS North Latitude	DMS West Longitude	Object Top Elevation (MSL)	Object Height (AGL)	Ground Elevation (MSL)	Part-77 Surface		Critical Approach Surface		Critical Departure Surface		
								Approach Surface	Surface Elevation (MSL)	Approach Surface	Surface Elevation (MSL)	Departure Surface	Surface Elevation (MSL)	Elevation when Climb Gradient exceeds Low Close-in Criteria
24 Unique Obstacles														
HIGHLINE SCHOOL DISTRICT KING COUNTY PARCEL 768620-0705 NORTH PARCEL	X 1	T1796	47 25 29.1 N	-122 18 59.2 W	505	126.8	378.2	INNR-TRANS	467	TSS(34-1)	519	DPRT (40-1)	483	508
	X 2	T1920	47 25 28.6 N	-122 18 59.4 W	502	124.1	378.4	INNR-TRANS	467	TSS(34-1)	521	DPRT (40-1)	484	508
	X 3	T1960	47 25 28.9 N	-122 18 58.8 W	500	120.2	380.5	INNR-TRANS	464	TSS(34-1)	520	DPRT (40-1)	484	508
	X 4	T1960i	47 25 28.9 N	-122 18 58.8 W	501	120.8	380.5	INNR-TRANS	466	TSS(34-1)	520	DPRT (40-1)	484	508
	X 5	T2164	47 25 28.6 N	-122 18 57.4 W	504	117.6	386.9	INNR APCH (50-1)	468	TSS(34-1)	521	DPRT (40-1)	484	508
	X 6	T2175	47 25 28.4 N	-122 18 58.6 W	495	119.9	374.7	INNR-TRANS	463	TSS(34-1)	521	DPRT (40-1)	484	508
	X 7	T2176	47 25 28.2 N	-122 18 58.8 W	506	133.2	373.5	INNR-TRANS	463	TSS(34-1)	522	DPRT (40-1)	484	508
HIGHLINE SCHOOL DISTRICT KING COUNTY PARCEL 768620-1040 SOUTH PARCEL	X 8	T2246	47 25 27.3 N	-122 18 54.8 W	498	108.1	390.0	INNR APCH (50-1)	459	TSS(34-1)	504	DPRT (40-1)	488	508
	X 9	T2248	47 25 27.0 N	-122 18 54.9 W	503	115.4	388.0	INNR APCH (50-1)	459	TSS(34-1)	504	DPRT (40-1)	488	508
	X 10	T2249	47 25 27.2 N	-122 18 54.3 W	501	111.2	390.5	INNR APCH (50-1)	459	TSS(34-1)	504	DPRT (40-1)	488	508
	X 11	T2253	47 25 27.4 N	-122 18 53.7 W	510	113.8	396.9	INNR APCH (50-1)	459	TSS(34-1)	504	DPRT (40-1)	488	508
	X 12	T2255	47 25 27.3 N	-122 18 53.0 W	500	103.3	396.9	INNR APCH (50-1)	459	TSS(34-1)	504	DPRT (40-1)	488	508
	X 13	T2265	47 25 26.9 N	-122 18 54.2 W	502	112.8	390.1	INNR APCH (50-1)	459	TSS(34-1)	505	DPRT (40-1)	489	508
	X 14	T2266	47 25 26.7 N	-122 18 54.3 W	499	107.4	392.4	INNR APCH (50-1)	460	TSS(34-1)	506	DPRT (40-1)	489	508
	X 15	T2267	47 25 26.7 N	-122 18 53.9 W	503	111.0	392.8	INNR APCH (50-1)	460	TSS(34-1)	506	DPRT (40-1)	489	508
	X 16	T2268	47 25 26.7 N	-122 18 53.4 W	513	116.7	396.5	INNR APCH (50-1)	460	TSS(34-1)	505	DPRT (40-1)	489	508
	X 17	T2471	47 25 26.5 N	-122 18 53.8 W	507	111.5	395.7	INNR APCH (50-1)	460	TSS(34-1)	506	DPRT (40-1)	490	508
	X 18	T2472	47 25 26.3 N	-122 18 53.4 W	499	101.2	398.4	INNR APCH (50-1)	461	TSS(34-1)	507	DPRT (40-1)	491	508
	X 19	T2481	47 25 25.8 N	-122 18 53.9 W	494	100.5	394.0	INNR APCH (50-1)	461	TSS(34-1)	508	DPRT (40-1)	491	514*
	X 20	T2482	47 25 25.8 N	-122 18 53.5 W	502	104.5	398.2	INNR APCH (50-1)	461	TSS(34-1)	508	DPRT (40-1)	491	508
	X 21	T2483	47 25 26.0 N	-122 18 53.4 W	507	108.4	398.9	INNR APCH (50-1)	461	TSS(34-1)	507	DPRT (40-1)	491	508
	X 22	T2484	47 25 25.9 N	-122 18 53.2 W	502	103.5	398.5	INNR APCH (50-1)	461	TSS(34-1)	508	DPRT (40-1)	491	508
	X 23	T2486	47 25 26.1 N	-122 18 53.1 W	501	101.3	400.3	INNR APCH (50-1)	461	TSS(34-1)	507	DPRT (40-1)	491	508
	X 24	T2487	47 25 25.7 N	-122 18 53.3 W	500	101.4	398.9	INNR APCH (50-1)	462	TSS(34-1)	508	DPRT (40-1)	491	514*
	X 25	T2492	47 25 25.3 N	-122 18 53.2 W	505	111.6	394.3	INNR APCH (50-1)	462	TSS(34-1)	510	DPRT (40-1)	492	514*
	X 26	T2911	47 25 27.3 N	-122 18 55.2 W	497	108.5	389.0	INNR APCH (50-1)	459	TSS(34-1)	504	DPRT (40-1)	488	508

Lowest Critical Elevation

Source: 06/2018 LIDAR Survey (Object Top Elevation, Object Height, and Ground Elevation)

X = Tree has been removed, part of JOC Package1-SD5

*LCI elevations reflect the 16C departure surface. All others correspond with 16R.

Notes:

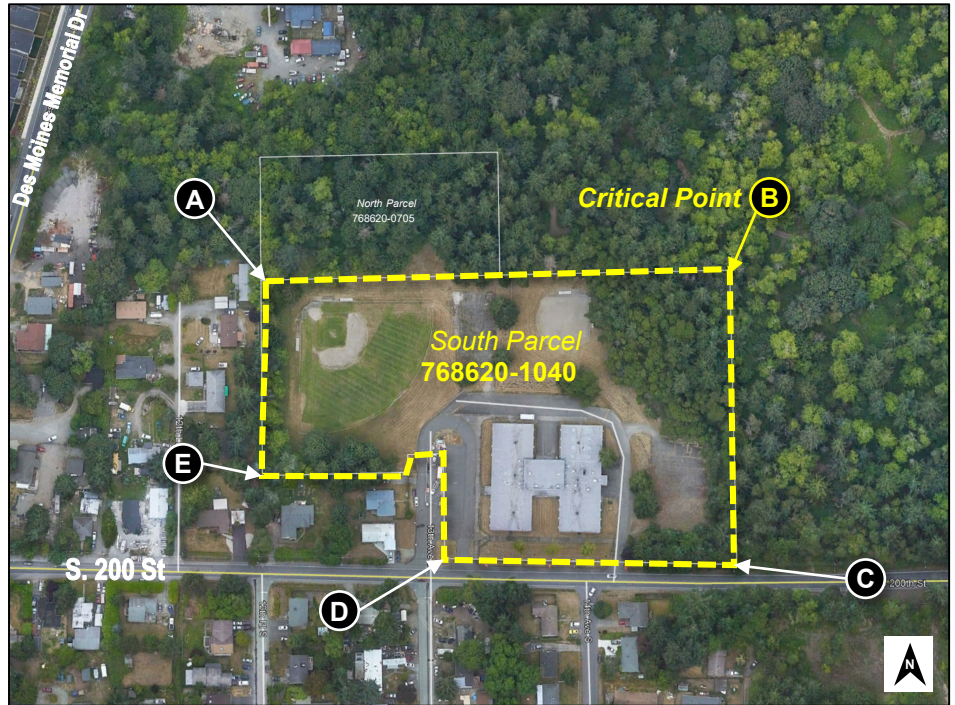
- All distances reported in Feet
- MSL elevations: Vertical Datum is in NAVD88
- Object top elevations rounded up and surface elevations rounded down; per FAA standard procedure design rounding practices

HIGHLINE SCHOOL DISTRICT

KING COUNTY PARCEL 768620-1040

Property Line Detail

	DMS North Latitude	DMS West Longitude	Approach Surface Elev. (MSL)	Departure Surface Elev. (MSL)
A	47 25 27.29 N	-122 19 04.40 W	50-1:471 ft TSS: 524 ft	40-1: 488 ft LCI: 508 ft
B	47 25 27.35 N	-122 18 52.84 W	50-1:458 ft TSS: 504 ft	40-1: 487 ft LCI: 508 ft
C	47 25 22.46 N	-122 18 52.78 W	50-1:468 ft TSS: 518 ft	40-1: 500 ft LCI: 514 ft
D	47 25 22.62 N	-122 18 59.90 W	INTR: 473 ft TSS: 518 ft	40-1: 499 ft LCI: 514 ft
E	47 25 24.03 N	-122 19 04.36 W	50-1:477 ft TSS: 534 ft	40-1: 496 ft LCI: 514 ft



Notes:

50-1: Part 77 Inner Approach
INTR: Part 77 Inner Transitional
TSS = Threshold Sitting Surface
40-1 = Departure Surface
LCI = Low Close-In

Point B: Critical point along edge of parcel boundary, closest to the Runway Threshold and Runway Centerline

Note: The graphical boundary for the properties shown are calculated from the available records and have not been field verified.

Obstacle Detail

0 Trees Remaining in South Parcel (19 removed in JOC-Package1-SD5)

Avigation Easement Analysis															
Parcel Information	#	Tree ID	DMS North Latitude	DMS West Longitude	Object Top Elevation (MSL)	Object Height (AGL)	Ground Elevation (MSL)	Part-77 Surface		Critical Approach Surface		Critical Departure Surface			
								Approach Surface	Surface Elevation (MSL)	Approach Surface	Surface Elevation (MSL)	Departure Surface	Surface Elevation (MSL)	Elevation when Climb Gradient exceeds Low Close-in Criteria	
24 Unique Obstacles															
HIGHLINE SCHOOL DISTRICT KING COUNTY PARCEL 768620-0705 NORTH PARCEL	X	1	T1796	47 25 29.1 N	-122 18 59.2 W	505	126.8	378.2	INNR-TRANS	467	TSS(34-1)	519	DPRT (40-1)	483	508
	X	2	T1920	47 25 28.6 N	-122 18 59.4 W	502	124.1	378.4	INNR-TRANS	467	TSS(34-1)	521	DPRT (40-1)	484	508
	X	3	T1960	47 25 28.9 N	-122 18 58.8 W	500	120.2	380.5	INNR-TRANS	464	TSS(34-1)	520	DPRT (40-1)	484	508
	X	4	T1960i	47 25 28.9 N	-122 18 58.8 W	501	120.8	380.5	INNR-TRANS	466	TSS(34-1)	520	DPRT (40-1)	484	508
	X	5	T2164	47 25 28.6 N	-122 18 57.4 W	504	117.6	386.9	INNR APCH (50-1)	468	TSS(34-1)	521	DPRT (40-1)	484	508
	X	6	T2175	47 25 28.4 N	-122 18 58.6 W	495	119.9	374.7	INNR-TRANS	463	TSS(34-1)	521	DPRT (40-1)	484	508
	X	7	T2176	47 25 28.2 N	-122 18 58.8 W	506	133.2	373.5	INNR-TRANS	463	TSS(34-1)	522	DPRT (40-1)	484	508
HIGHLINE SCHOOL DISTRICT KING COUNTY PARCEL 768620-1040 SOUTH PARCEL	X	8	T2246	47 25 27.3 N	-122 18 54.8 W	498	108.1	390.0	INNR APCH (50-1)	459	TSS(34-1)	504	DPRT (40-1)	488	508
	X	9	T2248	47 25 27.0 N	-122 18 54.9 W	503	115.4	388.0	INNR APCH (50-1)	459	TSS(34-1)	504	DPRT (40-1)	488	508
	X	10	T2249	47 25 27.2 N	-122 18 54.3 W	501	111.2	390.5	INNR APCH (50-1)	459	TSS(34-1)	504	DPRT (40-1)	488	508
	X	11	T2253	47 25 27.4 N	-122 18 53.7 W	510	113.8	396.9	INNR APCH (50-1)	459	TSS(34-1)	504	DPRT (40-1)	488	508
	X	12	T2255	47 25 27.3 N	-122 18 53.0 W	500	103.3	396.9	INNR APCH (50-1)	459	TSS(34-1)	504	DPRT (40-1)	488	508
	X	13	T2265	47 25 26.9 N	-122 18 54.2 W	502	112.8	390.1	INNR APCH (50-1)	459	TSS(34-1)	505	DPRT (40-1)	489	508
	X	14	T2266	47 25 26.7 N	-122 18 54.3 W	499	107.4	392.4	INNR APCH (50-1)	460	TSS(34-1)	506	DPRT (40-1)	489	508
	X	15	T2267	47 25 26.7 N	-122 18 53.9 W	503	111.0	392.8	INNR APCH (50-1)	460	TSS(34-1)	506	DPRT (40-1)	489	508
	X	16	T2268	47 25 26.7 N	-122 18 53.4 W	513	116.7	396.5	INNR APCH (50-1)	460	TSS(34-1)	505	DPRT (40-1)	489	508
	X	17	T2471	47 25 26.5 N	-122 18 53.8 W	507	111.5	395.7	INNR APCH (50-1)	460	TSS(34-1)	506	DPRT (40-1)	490	508
	X	18	T2472	47 25 26.3 N	-122 18 53.4 W	499	101.2	398.4	INNR APCH (50-1)	461	TSS(34-1)	507	DPRT (40-1)	491	508
	X	19	T2481	47 25 25.8 N	-122 18 53.9 W	494	100.5	394.0	INNR APCH (50-1)	461	TSS(34-1)	508	DPRT (40-1)	491	514*
	X	20	T2482	47 25 25.8 N	-122 18 53.5 W	502	104.5	398.2	INNR APCH (50-1)	461	TSS(34-1)	508	DPRT (40-1)	491	508
	X	21	T2483	47 25 26.0 N	-122 18 53.4 W	507	108.4	398.9	INNR APCH (50-1)	461	TSS(34-1)	507	DPRT (40-1)	491	508
	X	22	T2484	47 25 25.9 N	-122 18 53.2 W	502	103.5	398.5	INNR APCH (50-1)	461	TSS(34-1)	508	DPRT (40-1)	491	508
	X	23	T2486	47 25 26.1 N	-122 18 53.1 W	501	101.3	400.3	INNR APCH (50-1)	461	TSS(34-1)	507	DPRT (40-1)	491	508
	X	24	T2487	47 25 25.7 N	-122 18 53.3 W	500	101.4	398.9	INNR APCH (50-1)	462	TSS(34-1)	508	DPRT (40-1)	491	514*
	X	25	T2492	47 25 25.3 N	-122 18 53.2 W	505	111.6	394.3	INNR APCH (50-1)	462	TSS(34-1)	510	DPRT (40-1)	492	514*
	X	26	T2911	47 25 27.3 N	-122 18 55.2 W	497	108.5	389.0	INNR APCH (50-1)	459	TSS(34-1)	504	DPRT (40-1)	488	508

Lowest Critical Elevation

Source: 06/2018 LIDAR Survey (Object Top Elevation, Object Height, and Ground Elevation)

X = Tree has been removed, part of JOC Package 1-SD5

*LCI elevations reflect the 16C departure surface. All others correspond with 16R.

Notes:

- All distances reported in Feet
- MSL elevations: Vertical Datum is in NAVD88
- Object top elevations rounded up and surface elevations rounded down; per FAA standard procedure design rounding practices

HILL GROVE CEMETERY

KING COUNTY PARCEL 042204-9025

Property Line Detail

	DMS North Latitude	DMS West Longitude	Approach Surface Elev. (MSL)	Departure Surface Elev. (MSL)
A	47 25 21.84 N	-122 18 47.19 W	INTR: 449 ft TSS: 520 ft	40-1: 423 ft LCI: 498 ft
B	47 25 21.83 N	-122 18 44.14 W	INTR: 419 ft TSS: 520 ft	40-1: 423 ft LCI: 498 ft
C	47 25 20.00 N	-122 18 44.13 W	INTR: 419 ft TSS: 525 ft	40-1: 428 ft LCI: 498 ft
D	47 25 19.96 N	-122 18 47.18 W	INTR: 449 ft TSS: 526 ft	40-1: 428 ft LCI: 498 ft



INTR: Part 77 Inner Transitional
TSS = Threshold Sitting Surface
40-1 = Departure Surface
LCI = Low Close-In

Notes:

Point A: Critical point along edge of parcel boundary, closest to the Runway Threshold and Runway Centerline

Note: The graphical boundary for the properties shown are calculated from the available records and have not been field verified.

Obstacle Detail

6 Total Trees

Avigation Easement Analysis														
Parcel Information	#	Tree ID	DMS North Latitude	DMS West Longitude	Object Top Elevation (MSL)	Object Height (AGL)	Ground Elevation (MSL)	Part-77 Surface		Critical Approach Surface		Critical Departure Surface		
								Approach Surface	Surface Elevation (MSL)	Approach Surface	Surface Elevation (MSL)	Departure Surface	Surface Elevation (MSL)	Elevation when Climb Gradient exceeds Low Close-In Criteria
6 Unique Obstacles														
HILL GROVE CEMETERY KING COUNTY PARCEL 042204-9025	1	T1645	47 25 20.3 N	-122 18 46.0 W	498	143.2	355.4	INNR-TRANS	438	TSS(34-1)	525	DPRT (40-1)	427	514
	2	T1693	47 25 21.7 N	-122 18 47.0 W	502	137.9	364.4	INNR-TRANS	449	TSS(34-1)	520	DPRT (40-1)	424	498*
	3	T1696	47 25 21.1 N	-122 18 47.1 W	489	123.2	366.5	INNR-TRANS	449	TSS(34-1)	522	DPRT (40-1)	425	514
	4	T1700	47 25 20.9 N	-122 18 46.6 W	493	131.8	361.2	INNR-TRANS	444	TSS(34-1)	523	DPRT (40-1)	426	514
	5	T1703	47 25 20.4 N	-122 18 47.0 W	497	136.2	361.0	INNR-TRANS	448	TSS(34-1)	524	DPRT (40-1)	427	514
	6	T1716	47 25 20.1 N	-122 18 47.1 W	504	145.7	358.5	INNR-TRANS	448	TSS(34-1)	525	DPRT (40-1)	428	498*

Lowest Critical Elevation

Source: 06/2018 LIDAR Survey (Object Top Elevation, Object Height, and Ground Elevation)

*LCI elevations reflect the 16L departure surface. All others correspond with 16C.

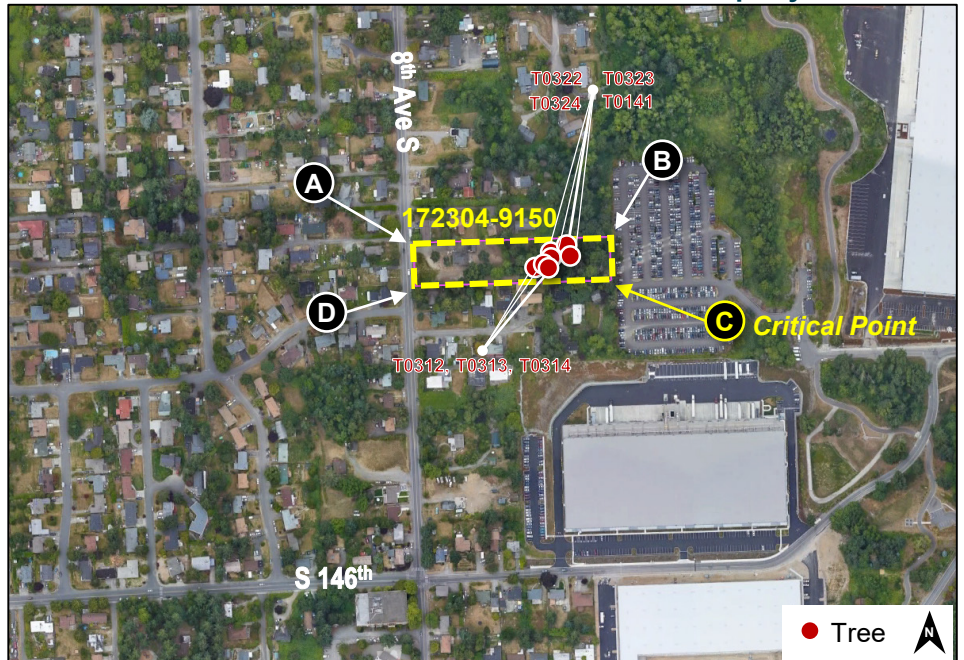
- Notes:
- All distances reported in Feet
 - MSL elevations: Vertical Datum is in NAVD88
 - Object top elevations rounded up and surface elevations rounded down; per FAA standard procedure design rounding practices

RESIDENTIAL - SINGH

KING COUNTY PARCEL 172304-9150

Property Line Detail

	DMS North Latitude	DMS West Longitude	Approach Surface Elev. (MSL)	Departure Surface Elev. (MSL)
A	47 28 31.15 N	-122 19 24.07 W	INTR: 535 ft TERP: 714 ft	40-1: 519 ft LCI: 566 ft
B	47 28 31.08 N	-122 19 14.98 W	50-1: 494 ft TSS: 531 ft	40-1: 519 ft LCI: 566 ft
C	47 28 29.71 N	-122 19 14.99 W	50-1: 491 ft TSS: 527 ft	40-1: 515 ft LCI: 566 ft
D	47 28 29.80 N	-122 19 24.08 W	INTR: 535 ft TERP: 710 ft	40-1: 515 ft LCI: 566 ft



50-1 = Part 77 Inner Approach
 INTR = Part 77 Inner Transitional
 TSS = Threshold Sitting Surface
 TERP = TERPS W, X, or Y
 40-1 = Departure Surface
 LCI = Low Close-In

Notes:

Point C: Critical point along edge of parcel boundary, closest to the Runway Threshold and Runway Centerline

Note: The graphical boundary for the properties shown are calculated from the available records and have not been field verified.

Obstacle Detail

7 Total Trees

Avigation Easement Analysis														
Parcel Information	#	Tree ID	DMS North Latitude	DMS West Longitude	Object Top Elevation (MSL)	Object Height (AGL)	Ground Elevation (MSL)	Part-77 Surface		Critical Approach Surface		Critical Departure Surface		
								Approach Surface	Surface Elevation (MSL)	Approach Surface	Surface Elevation (MSL)	Departure Surface	Surface Elevation (MSL)	Elevation when Climb Gradient exceeds Low Close-In Criteria
11 Unique Obstacles														
RESIDENTIAL - SINGH KING COUNTY PARCEL 172304-9150	1	T0141	47 28 30.7 N	-122 19 16.1 W	518.1	123.4	394.7	INNR APCH (50-1)	493	TSS (34-1)	530	DPRT (40-1)	518	566
	2	T0312	47 28 30.0 N	-122 19 18.0 W	517.8	100.6	417.2	INNR APCH (50-1)	492	TSS (34-1)	528	DPRT (40-1)	516	566
	3	T0313	47 28 30.0 N	-122 19 17.7 W	516.8	105.0	411.8	INNR APCH (50-1)	492	TSS (34-1)	528	DPRT (40-1)	516	566
	4	T0314	47 28 29.9 N	-122 19 17.4 W	515.3	106.8	408.5	INNR APCH (50-1)	492	TSS (34-1)	528	DPRT (40-1)	516	566
	5	T0322	47 28 30.9 N	-122 19 16.8 W	519.6	115.6	404.0	INNR APCH (50-1)	494	TSS (34-1)	531	DPRT (40-1)	518	566
	6	T0323	47 28 31.0 N	-122 19 16.3 W	520.4	125.3	395.1	INNR APCH (50-1)	494	TSS (34-1)	531	DPRT (40-1)	518	566
	7	T0324	47 28 30.5 N	-122 19 16.8 W	520.7	117.3	403.4	INNR APCH (50-1)	493	TSS (34-1)	530	DPRT (40-1)	518	566
RESIDENTIAL - HERNANDEZ KING COUNTY PARCEL 024150-0020	8	T0399	47 28 25.5 N	-122 18 06.1 W	571.9	124.3	447.6	INNR-TRANS	564	TERPS Y	726	DPRT (40-1)	523	584
COMMERCIAL - CHU KING COUNTY PARCEL 322304-9293	9	T0700	47 26 13.3 N	-122 19 12.8 W	375.0	64.5	310.4	INNR APCH (50-1)	378	TSS (34-1)	388	DPRT (40-1)	388	508
RESIDENTIAL - DES MOINES/AMOS/SAGALI KING COUNTY PARCEL 052204-9134	10	T1042	47 25 25.4 N	-122 19 28.8 W	503.2	126.4	376.7	INNR-TRANS	507	TERPS Y	749	DPRT (40-1)	509	n/a
COMMERCIAL - FARMER KING COUNTY PARCEL 768620-0690	11	T1933	47 25 30.2 N	-122 18 59.0 W	495.9	136.8	359.0	INNR APCH (50-1)	465	TERPS W	516	DPRT (40-1)	480	508
RESIDENTIAL - JOHNSTON KING COUNTY PARCEL 024150-0010	12	T0395	47 28 27.0 N	-122 18 06.7 W	503.2	126.4	376.7	INNR-TRANS	559	TERPS Y	726	DPRT (40-1)	527	584
RESIDENTIAL - REDA/TESSAYE KING COUNTY PARCEL 024600-0044	13	T0866	47 25 45.6 N	-122 19 16.6 W	495.9	136.8	359.0	INNR APCH (50-1)	434	TSS (34-1)	470	DPRT (40-1)	458	508
RESIDENTIAL - CHEN KING COUNTY PARCEL 024150-0070	No obstructions located within parcel													
COMMERCIAL - CHU KING COUNTY PARCEL 322304-9022														
COMMERCIAL - CHU KING COUNTY PARCEL 322304-9117														

Lowest Critical Elevation

Source: 06/2018 LIDAR Survey (Object Top Elevation, Object Height, and Ground Elevation)

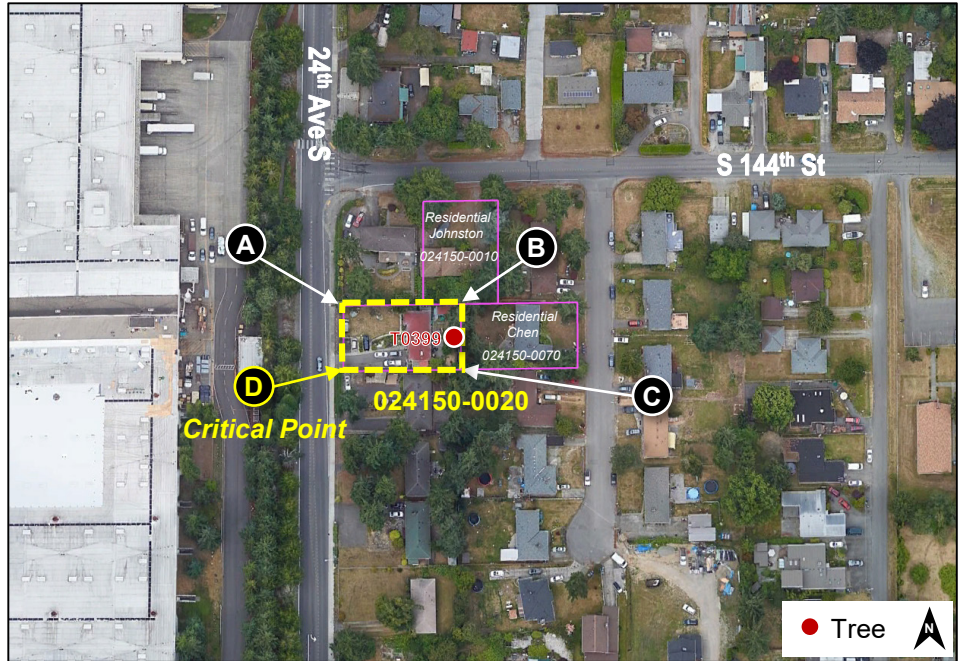
- Notes:
- All distances reported in Feet
 - MSL elevations: Vertical Datum is in NAVD88
 - Object top elevations rounded up and surface elevations rounded down; per FAA standard procedure design rounding practices

RESIDENTIAL - HERNANDEZ

KING COUNTY PARCEL 024150-0020

Property Line Detail

	DMS North Latitude	DMS West Longitude	Approach Surface Elev. (MSL)	Departure Surface Elev. (MSL)
A	47 28 25.89 N	-122 18 08.19 W	INTR: 546 ft TERP: 708 ft	40-1: 524 ft LCI: 584 ft
B	47 28 25.91 N	-122 18 06.26 W	INTR: 565 ft TERP: 727 ft	40-1: 524 ft LCI: 584 ft
C	47 28 25.18 N	-122 18 06.26 W	INTR: 565 ft TERP: 725 ft	40-1: 522 ft LCI: 584 ft
D	47 28 25.16 N	-122 18 08.20 W	INTR: 546 ft TERP: 708 ft	40-1: 522 ft LCI: 584 ft



INTR = Part 77 Inner Transitional
TERP = TERPS W, X, or Y
40-1 = Departure Surface
LCI = Low Close-In

Notes:

Point C: Critical point along edge of parcel boundary, closest to the Runway Threshold and Runway Centerline

Note: The graphical boundary for the properties shown are calculated from the available records and have not been field verified.

Obstacle Detail

1 Total Tree

Avigation Easement Analysis														
Parcel Information	#	Tree ID	DMS North Latitude	DMS West Longitude	Object Top Elevation (MSL)	Object Height (AGL)	Ground Elevation (MSL)	Part-77 Surface		Critical Approach Surface		Critical Departure Surface		
								Approach Surface	Surface Elevation (MSL)	Approach Surface	Surface Elevation (MSL)	Departure Surface	Surface Elevation (MSL)	Elevation when Climb Gradient exceeds Low Close-in Criteria
11 Unique Obstacles														
RESIDENTIAL - SINGH KING COUNTY PARCEL 172304-9150	1	T0141	47 28 30.7 N	-122 19 16.1 W	518.1	123.4	394.7	INNRP APCH (50-1)	493	TSS (34-1)	530	DPRT (40-1)	518	566
	2	T0312	47 28 30.0 N	-122 19 18.0 W	517.8	100.6	417.2	INNRP APCH (50-1)	492	TSS (34-1)	528	DPRT (40-1)	516	566
	3	T0313	47 28 30.0 N	-122 19 17.7 W	516.8	105.0	411.8	INNRP APCH (50-1)	492	TSS (34-1)	528	DPRT (40-1)	516	566
	4	T0314	47 28 29.9 N	-122 19 17.4 W	515.3	106.8	408.5	INNRP APCH (50-1)	492	TSS (34-1)	528	DPRT (40-1)	516	566
	5	T0322	47 28 30.9 N	-122 19 16.8 W	519.6	115.6	404.0	INNRP APCH (50-1)	494	TSS (34-1)	531	DPRT (40-1)	518	566
	6	T0323	47 28 31.0 N	-122 19 16.3 W	520.4	125.3	395.1	INNRP APCH (50-1)	494	TSS (34-1)	531	DPRT (40-1)	518	566
	7	T0324	47 28 30.5 N	-122 19 16.8 W	520.7	117.3	403.4	INNRP APCH (50-1)	493	TSS (34-1)	530	DPRT (40-1)	518	566
RESIDENTIAL - HERNANDEZ KING COUNTY PARCEL 024150-0020	8	T0399	47 28 25.5 N	-122 18 06.1 W	571.9	124.3	447.6	INNRP-TRANS	564	TERPS Y	726	DPRT (40-1)	523	584
COMMERCIAL - CHU KING COUNTY PARCEL 322304-9293	9	T0700	47 26 13.3 N	-122 19 12.8 W	375.0	64.5	310.4	INNRP APCH (50-1)	378	TSS (34-1)	388	DPRT (40-1)	388	508
RESIDENTIAL - DES MOINES/AMOS/SAGALI KING COUNTY PARCEL 052204-9134	10	T1042	47 25 25.4 N	-122 19 28.8 W	503.2	126.4	376.7	INNRP-TRANS	507	TERPS Y	749	DPRT (40-1)	509	n/a
COMMERCIAL - FARMER KING COUNTY PARCEL 768620-0690	11	T1933	47 25 30.2 N	-122 18 59.0 W	495.9	136.8	359.0	INNRP APCH (50-1)	465	TERPS W	516	DPRT (40-1)	480	508
RESIDENTIAL - JOHNSTON KING COUNTY PARCEL 024150-0010	12	T0395	47 28 27.0 N	-122 18 06.7 W	503.2	126.4	376.7	INNRP-TRANS	559	TERPS Y	726	DPRT (40-1)	527	584
RESIDENTIAL - REDA/TESSAYE KING COUNTY PARCEL 024600-0044	13	T0866	47 25 45.6 N	-122 19 16.6 W	495.9	136.8	359.0	INNRP APCH (50-1)	434	TSS (34-1)	470	DPRT (40-1)	458	508
RESIDENTIAL - CHEN KING COUNTY PARCEL 024150-0070	No obstructions located within parcel													
COMMERCIAL - CHU KING COUNTY PARCEL 322304-9022														
COMMERCIAL - CHU KING COUNTY PARCEL 322304-9117														

Lowest Critical Elevation

Source: 06/2018 LIDAR Survey (Object Top Elevation, Object Height, and Ground Elevation)

- Notes:
- All distances reported in Feet
 - MSL elevations: Vertical Datum is in NAVD88
 - Object top elevations rounded up and surface elevations rounded down; per FAA standard procedure design rounding practices

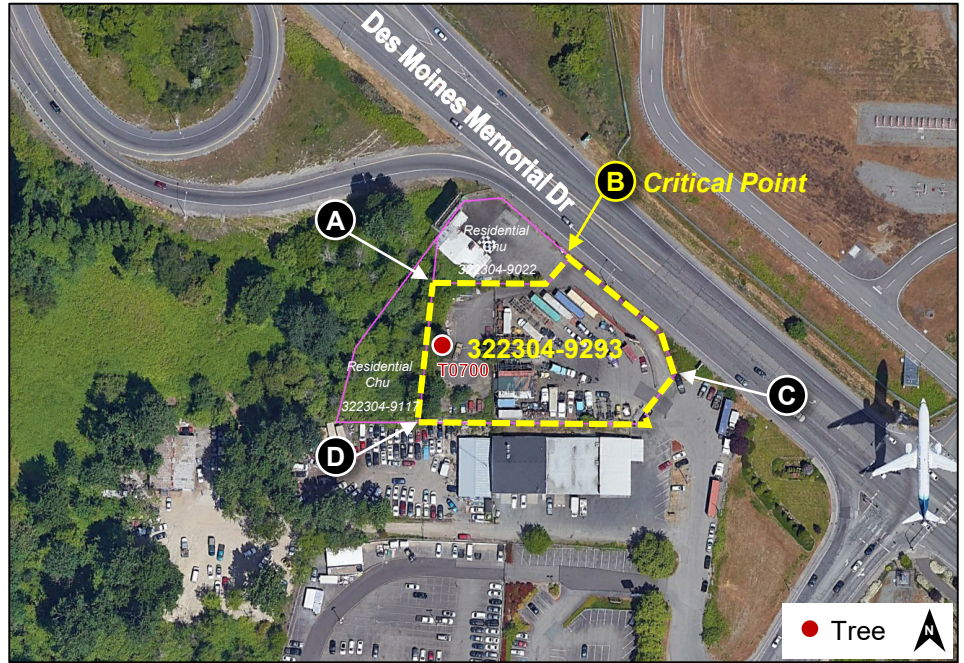
COMMERCIAL - CHU

KING COUNTY PARCEL 322304-9293

Property Line Detail

	DMS North Latitude	DMS West Longitude	Approach Surface Elev. (MSL)	Departure Surface Elev. (MSL)
A	47 26 14.02 N	-122 19 13.11 W	50-1: 376 ft TSS: 385 ft	40-1: 386 ft LCI: 508 ft
B	47 26 14.36 N	-122 19 10.86 W	50-1: 375 ft TSS: 384 ft	40-1: 385 ft LCI: 508 ft
C	47 26.13.09 N	-122 19 09.07 W	50-1: 378 ft TSS: 388 ft	40-1: 388 ft LCI: 508 ft
D	47 26 12.46 N	-122 19 13.27 W	50-1: 379 ft TSS: 390 ft	40-1: 390 ft LCI: 508 ft

50-1 = Part 77 Inner Approach
TSS = Threshold Sitting Surface
40-1 = Departure Surface
LCI = Low Close-In



Note: The graphical boundary for the properties shown are calculated from the available records and have not been field verified.

Notes:

Point B: Critical point along edge of parcel boundary, closest to the Runway Threshold and Runway Centerline

Obstacle Detail

1 Total Tree

Avigation Easement Analysis														
Parcel Information	#	Tree ID	DMS North Latitude	DMS West Longitude	Object Top Elevation (MSL)	Object Height (AGL)	Ground Elevation (MSL)	Part-77 Surface		Critical Approach Surface		Critical Departure Surface		
								Approach Surface	Surface Elevation (MSL)	Approach Surface	Surface Elevation (MSL)	Departure Surface	Surface Elevation (MSL)	Elevation when Climb Gradient exceeds Low Close-in Criteria
11 Unique Obstacles														
RESIDENTIAL - SINGH KING COUNTY PARCEL 172304-9150	1	T0141	47 28 30.7 N	-122 19 16.1 W	518.1	123.4	394.7	INNR APCH (50-1)	493	TSS (34-1)	530	DPRT (40-1)	518	566
	2	T0312	47 28 30.0 N	-122 19 18.0 W	517.8	100.6	417.2	INNR APCH (50-1)	492	TSS (34-1)	528	DPRT (40-1)	516	566
	3	T0313	47 28 30.0 N	-122 19 17.7 W	516.8	105.0	411.8	INNR APCH (50-1)	492	TSS (34-1)	528	DPRT (40-1)	516	566
	4	T0314	47 28 29.9 N	-122 19 17.4 W	515.3	106.8	408.5	INNR APCH (50-1)	492	TSS (34-1)	528	DPRT (40-1)	516	566
	5	T0322	47 28 30.9 N	-122 19 16.8 W	519.6	115.6	404.0	INNR APCH (50-1)	494	TSS (34-1)	531	DPRT (40-1)	518	566
	6	T0323	47 28 31.0 N	-122 19 16.3 W	520.4	125.3	395.1	INNR APCH (50-1)	494	TSS (34-1)	531	DPRT (40-1)	518	566
	7	T0324	47 28 30.5 N	-122 19 16.8 W	520.7	117.3	403.4	INNR APCH (50-1)	493	TSS (34-1)	530	DPRT (40-1)	518	566
RESIDENTIAL - HERNANDEZ KING COUNTY PARCEL 024150-0070	8	T0399	47 28 25.5 N	-122 18 06.1 W	571.9	124.3	447.6	INNR-TRANS	564	TERPS Y	726	DPRT (40-1)	523	584
COMMERCIAL - CHU KING COUNTY PARCEL 322304-9293	9	T0700	47 26 13.3 N	-122 19 12.8 W	375.0	64.5	310.4	INNR APCH (50-1)	378	TSS (34-1)	388	DPRT (40-1)	388	508
RESIDENTIAL - DES MOINES/AMOS/SAGALI KING COUNTY PARCEL 052204-9134	10	T1042	47 25 25.4 N	-122 19 28.8 W	503.2	126.4	376.7	INNR-TRANS	507	TERPS Y	749	DPRT (40-1)	509	n/a
COMMERCIAL - FARMER KING COUNTY PARCEL 768620-0690	11	T1933	47 25 30.2 N	-122 18 59.0 W	495.9	136.8	359.0	INNR APCH (50-1)	465	TERPS W	516	DPRT (40-1)	480	508
RESIDENTIAL - JOHNSTON KING COUNTY PARCEL 024150-0010	12	T0395	47 28 27.0 N	-122 18 06.7 W	503.2	126.4	376.7	INNR-TRANS	559	TERPS Y	726	DPRT (40-1)	527	584
RESIDENTIAL - REDA/TESSAYE KING COUNTY PARCEL 024600-0044	13	T0866	47 25 45.6 N	-122 19 16.6 W	495.9	136.8	359.0	INNR APCH (50-1)	434	TSS (34-1)	470	DPRT (40-1)	458	508
RESIDENTIAL - CHEN KING COUNTY PARCEL 024150-0070	No obstructions located within parcel													
COMMERCIAL - CHU KING COUNTY PARCEL 322304-9022														
COMMERCIAL - CHU KING COUNTY PARCEL 322304-9117														

Lowest Critical Elevation

Source: 06/2018 LIDAR Survey (Object Top Elevation, Object Height, and Ground Elevation)

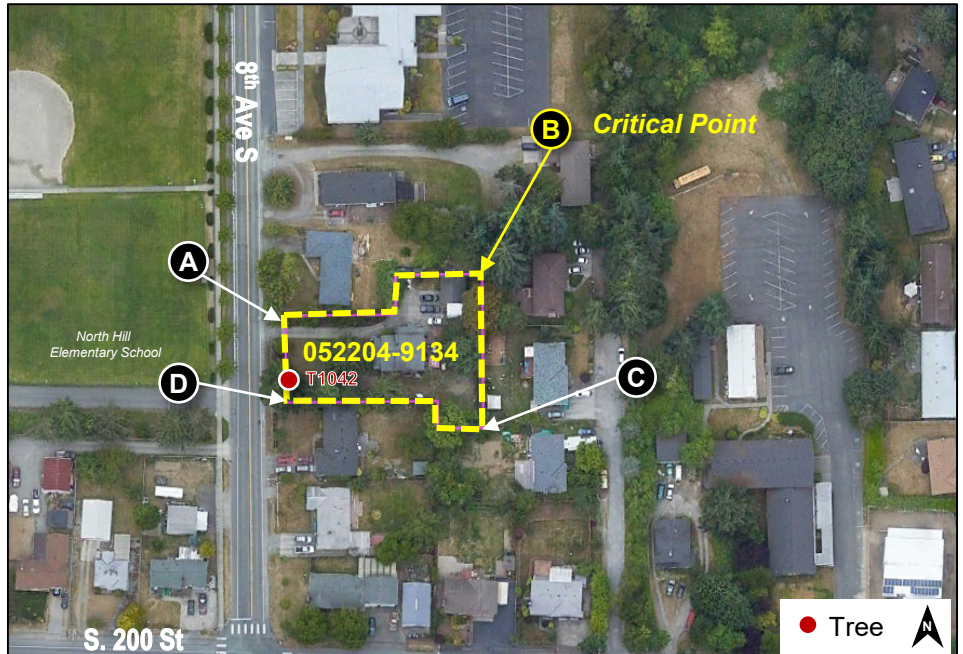
- Notes:
- All distances reported in Feet
 - MSL elevations: Vertical Datum is in NAVD88
 - Object top elevations rounded up and surface elevations rounded down; per FAA standard procedure design rounding practices

RESIDENTIAL - DES MOINES/AMOS/SAGALI

KING COUNTY PARCEL 052204-9134

Property Line Detail

	DMS North Latitude	DMS West Longitude	Approach Surface Elev. (MSL)	Departure Surface Elev. (MSL)
A	47 25 26.17 N	-122 19 28.83 W	INTR: 508 ft TERP: 747 ft	40-1: 507 ft LCI: 508 ft
B	47 25 26.56 N	-122 19 26.19 W	INTR: 482 ft TERP: 720 ft	40-1: 506 ft LCI: 508 ft
C	47 25 25.16 N	-122 19 26.16 W	INTR: 481 ft TERP: 724 ft	40-1: 510 ft LCI: n/a ft
D	47 25 25.38 N	-122 19 28.81 W	INTR: 507 ft TERP: 749 ft	40-1: 509 ft LCI: n/a ft



INTR = Part 77 Inner Transitional
TERP = TERPS W, X, or Y
40-1 = Departure Surface
LCI = Low Close-In

Notes:

Point B: Critical point along edge of parcel boundary, closest to the Runway Threshold and Runway Centerline

Note: The graphical boundary for the properties shown are calculated from the available records and have not been field verified.

Obstacle Detail

1 Total Tree

Avigation Easement Analysis														
Parcel Information	#	Tree ID	DMS North Latitude	DMS West Longitude	Object Top Elevation (MSL)	Object Height (AGL)	Ground Elevation (MSL)	Part-77 Surface		Critical Approach Surface		Critical Departure Surface		
								Approach Surface	Surface Elevation (MSL)	Approach Surface	Surface Elevation (MSL)	Departure Surface	Surface Elevation (MSL)	Elevation when Climb Gradient exceeds Low Close-in Criteria
11 Unique Obstacles														
RESIDENTIAL - SINGH KING COUNTY PARCEL 172304-9150	1	T0141	47 28 30.7 N	-122 19 16.1 W	518.1	123.4	394.7	INNRP APCH (50-1)	493	TSS (34-1)	530	DPRT (40-1)	518	566
	2	T0312	47 28 30.0 N	-122 19 18.0 W	517.8	100.6	417.2	INNRP APCH (50-1)	492	TSS (34-1)	528	DPRT (40-1)	516	566
	3	T0313	47 28 30.0 N	-122 19 17.7 W	516.8	105.0	411.8	INNRP APCH (50-1)	492	TSS (34-1)	528	DPRT (40-1)	516	566
	4	T0314	47 28 29.9 N	-122 19 17.4 W	515.3	106.8	408.5	INNRP APCH (50-1)	492	TSS (34-1)	528	DPRT (40-1)	516	566
	5	T0322	47 28 30.9 N	-122 19 16.8 W	519.6	115.6	404.0	INNRP APCH (50-1)	494	TSS (34-1)	531	DPRT (40-1)	518	566
	6	T0323	47 28 31.0 N	-122 19 16.3 W	520.4	125.3	395.1	INNRP APCH (50-1)	494	TSS (34-1)	531	DPRT (40-1)	518	566
	7	T0324	47 28 30.5 N	-122 19 16.8 W	520.7	117.3	403.4	INNRP APCH (50-1)	493	TSS (34-1)	530	DPRT (40-1)	518	566
RESIDENTIAL - HERNANDEZ KING COUNTY PARCEL 024150-0020	8	T0399	47 28 25.5 N	-122 18 06.1 W	571.9	124.3	447.6	INNRP-TRANS	564	TERPS Y	726	DPRT (40-1)	523	584
COMMERCIAL - CHU KING COUNTY PARCEL 322304-9202	9	T0700	47 26 13.3 N	-122 19 12.8 W	375.0	64.5	310.4	INNRP APCH (50-1)	378	TSS (34-1)	388	DPRT (40-1)	388	508
RESIDENTIAL - DES MOINES/AMOS/SAGALI KING COUNTY PARCEL 052204-9134	10	T1042	47 25 25.4 N	-122 19 28.8 W	503.2	126.4	376.7	INNRP-TRANS	507	TERPS Y	749	DPRT (40-1)	509	n/a
COMMERCIAL - FARMER KING COUNTY PARCEL 768620-0690	11	T1933	47 25 30.2 N	-122 18 59.0 W	495.9	136.8	359.0	INNRP APCH (50-1)	465	TERPS W	516	DPRT (40-1)	480	508
RESIDENTIAL - JOHNSTON KING COUNTY PARCEL 024150-0010	12	T0395	47 28 27.0 N	-122 18 06.7 W	503.2	126.4	376.7	INNRP-TRANS	559	TERPS Y	726	DPRT (40-1)	527	584
RESIDENTIAL - REDA/TESSAYE KING COUNTY PARCEL 024600-0044	13	T0866	47 25 45.6 N	-122 19 16.6 W	495.9	136.8	359.0	INNRP APCH (50-1)	434	TSS (34-1)	470	DPRT (40-1)	458	508
RESIDENTIAL - CHEN KING COUNTY PARCEL 024150-0070	No obstructions located within parcel													
COMMERCIAL - CHU KING COUNTY PARCEL 322304-9022														
COMMERCIAL - CHU KING COUNTY PARCEL 322304-9117														

Lowest Critical Elevation

Source: 06/2018 LIDAR Survey (Object Top Elevation, Object Height, and Ground Elevation)

- Notes:
- All distances reported in Feet
 - MSL elevations: Vertical Datum is in NAVD88
 - Object top elevations rounded up and surface elevations rounded down; per FAA standard procedure design rounding practices

COMMERCIAL - FARMER

KING COUNTY PARCEL 768620-0690

Property Line Detail

	DMS North Latitude	DMS West Longitude	Approach Surface Elev. (MSL)	Departure Surface Elev. (MSL)
A	47 25 30.37 N	-122 19 00.00 W	50-1: 464 ft TSS: 515 ft	40-1: 496 ft LCI: 508 ft
B	47 25 30.38 N	-122 18 58.67 W	INTR: 462 ft TSS: 515 ft	40-1: 496 ft LCI: 508 ft
C	47 25 29.89 N	-122 18 58.54 W	INTR: 461 ft TSS: 517 ft	40-1: 498 ft LCI: 508 ft
D	47 25 29.88 N	-122 19 00.00 W	50-1: 465 ft TSS: 517 ft	40-1: 498 ft LCI: 508 ft



50-1 = Part 77 Inner Approach
INTR = Part 77 Inner Transitional
TSS = Threshold Sitting Surface
40-1 = Departure Surface
LCI = Low Close-In

Notes:

Point B: Critical point along edge of parcel boundary, closest to the Runway Threshold and Runway Centerline

Note: The graphical boundary for the properties shown are calculated from the available records and have not been field verified.

Obstacle Detail

1 Total Tree

Avigation Easement Analysis														
Parcel Information	#	Tree ID	DMS North Latitude	DMS West Longitude	Object Top Elevation (MSL)	Object Height (AGL)	Ground Elevation (MSL)	Part-77 Surface		Critical Approach Surface		Critical Departure Surface		
								Approach Surface	Surface Elevation (MSL)	Approach Surface	Surface Elevation (MSL)	Departure Surface	Surface Elevation (MSL)	Elevation when Climb Gradient exceeds Low Close-in Criteria
11 Unique Obstacles														
RESIDENTIAL - SINGH KING COUNTY PARCEL 172304-9150	1	T0141	47 28 30.7 N	-122 19 16.1 W	518.1	123.4	394.7	INNRP APCH (50-1)	493	TSS (34-1)	530	DPRT (40-1)	518	566
	2	T0312	47 28 30.0 N	-122 19 18.0 W	517.8	100.6	417.2	INNRP APCH (50-1)	492	TSS (34-1)	528	DPRT (40-1)	516	566
	3	T0313	47 28 30.0 N	-122 19 17.7 W	516.8	105.0	411.8	INNRP APCH (50-1)	492	TSS (34-1)	528	DPRT (40-1)	516	566
	4	T0314	47 28 29.9 N	-122 19 17.4 W	515.3	106.8	408.5	INNRP APCH (50-1)	492	TSS (34-1)	528	DPRT (40-1)	516	566
	5	T0322	47 28 30.9 N	-122 19 16.8 W	519.6	115.6	404.0	INNRP APCH (50-1)	494	TSS (34-1)	531	DPRT (40-1)	518	566
	6	T0323	47 28 31.0 N	-122 19 16.3 W	520.4	125.3	395.1	INNRP APCH (50-1)	494	TSS (34-1)	531	DPRT (40-1)	518	566
	7	T0324	47 28 30.5 N	-122 19 16.8 W	520.7	117.3	403.4	INNRP APCH (50-1)	493	TSS (34-1)	530	DPRT (40-1)	518	566
RESIDENTIAL - HERNANDEZ KING COUNTY PARCEL 024150-0020	8	T0399	47 28 25.5 N	-122 18 06.1 W	571.9	124.3	447.6	INNRP-TRANS	564	TERPS Y	726	DPRT (40-1)	523	584
COMMERCIAL - CHU KING COUNTY PARCEL 322304-9293	9	T0700	47 26 13.3 N	-122 19 12.8 W	375.0	64.5	310.4	INNRP APCH (50-1)	378	TSS (34-1)	388	DPRT (40-1)	388	508
RESIDENTIAL - DES MOINES/AMOS/SAGALI KING COUNTY PARCEL 052304-9134	10	T1042	47 25 25.4 N	-122 19 28.8 W	503.2	126.4	376.7	INNRP-TRANS	507	TERPS Y	749	DPRT (40-1)	509	n/a
COMMERCIAL - FARMER KING COUNTY PARCEL 768620-0690	11	T1933	47 25 30.2 N	-122 18 59.0 W	495.9	136.8	359.0	INNRP APCH (50-1)	465	TERPS W	516	DPRT (40-1)	480	508
RESIDENTIAL - JOHNSTON KING COUNTY PARCEL 024150-0010	12	T0395	47 28 27.0 N	-122 18 06.7 W	503.2	126.4	376.7	INNRP-TRANS	559	TERPS Y	726	DPRT (40-1)	527	584
RESIDENTIAL - REDA/TESSAYE KING COUNTY PARCEL 024600-0044	13	T0866	47 25 45.6 N	-122 19 16.6 W	495.9	136.8	359.0	INNRP APCH (50-1)	434	TSS (34-1)	470	DPRT (40-1)	458	508
RESIDENTIAL - CHEN KING COUNTY PARCEL 024150-0070	No obstructions located within parcel													
COMMERCIAL - CHU KING COUNTY PARCEL 322304-9022														
COMMERCIAL - CHU KING COUNTY PARCEL 322304-9117														

Lowest Critical Elevation

Source: 06/2018 LIDAR Survey (Object Top Elevation, Object Height, and Ground Elevation)

- Notes:
- All distances reported in Feet
 - MSL elevations: Vertical Datum is in NAVD88
 - Object top elevations rounded up and surface elevations rounded down; per FAA standard procedure design rounding practices

RESIDENTIAL - JOHNSTON

KING COUNTY PARCEL 024150-0010

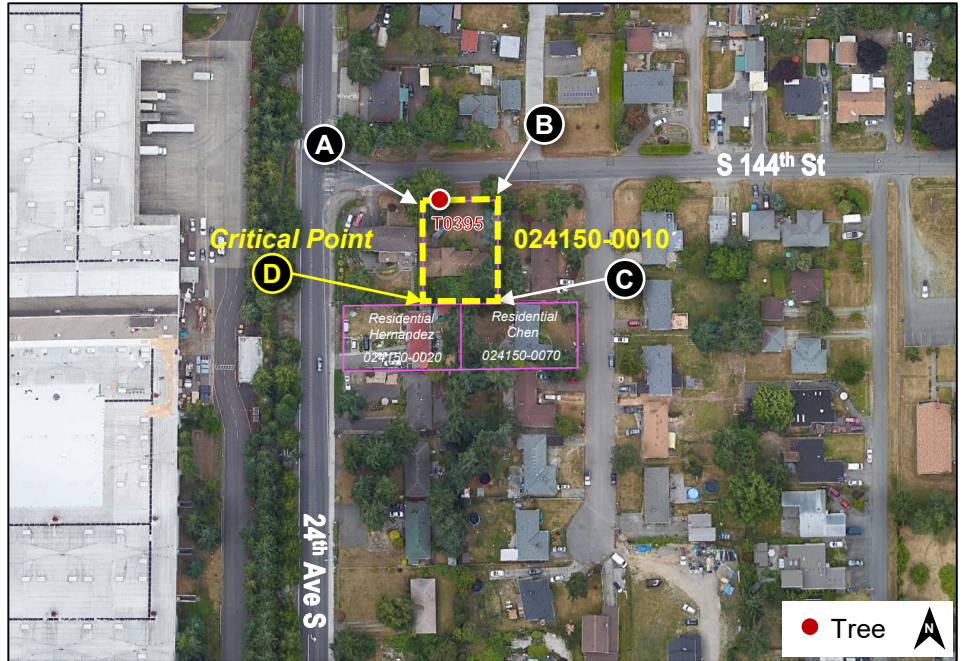
Property Line Detail

	DMS North Latitude	DMS West Longitude	Approach Surface Elev. (MSL)	Departure Surface Elev. (MSL)
A	47 28 27.08 N	-122 18 06.82 W	INTR: 558 ft TERP: 725 ft	40-1: 527 ft LCI: 584 ft
B	47 28 27.07 N	-122 18 05.65 W	INTR: 570 ft TERP: 737 ft	40-1: 527 ft LCI: 584 ft
C	47 28 25.92 N	-122 18 05.65 W	INTR: 571 ft TERP: 733 ft	40-1: n/a LCI: n/a
D	47 28 25.91 N	-122 18 06.88 W	INTR: 559 ft TERP: 721 ft	40-1: 524 ft LCI: 584 ft

INTR = Part 77 Inner Transitional
TERP = TERPS W, X, or Y
40-1 = Departure Surface
LCI = Low Close-In

Notes:

Point C: Critical point along edge of parcel boundary, closest to the Runway Threshold and Runway Centerline



Note: The graphical boundary for the properties shown are calculated from the available records and have not been field verified.

Obstacle Detail

1 Total Tree

Avigation Easement Analysis														
Parcel Information	#	Tree ID	DMS North Latitude	DMS West Longitude	Object Top Elevation (MSL)	Object Height (AGL)	Ground Elevation (MSL)	Part-77 Surface		Critical Approach Surface		Critical Departure Surface		
								Approach Surface	Surface Elevation (MSL)	Approach Surface	Surface Elevation (MSL)	Departure Surface	Surface Elevation (MSL)	Elevation when Climb Gradient exceeds Low Close-In Criteria
11 Unique Obstacles														
RESIDENTIAL - SINGH KING COUNTY PARCEL 172304-9150	1	T0141	47 28 30.7 N	-122 19 16.1 W	518.1	123.4	394.7	INNR APCH (50-1)	493	TSS (34-1)	530	DPRT (40-1)	518	566
	2	T0312	47 28 30.0 N	-122 19 18.0 W	517.8	100.6	417.2	INNR APCH (50-1)	492	TSS (34-1)	528	DPRT (40-1)	516	566
	3	T0313	47 28 30.0 N	-122 19 17.7 W	516.8	105.0	411.8	INNR APCH (50-1)	492	TSS (34-1)	528	DPRT (40-1)	516	566
	4	T0314	47 28 29.9 N	-122 19 17.4 W	515.3	106.8	408.5	INNR APCH (50-1)	492	TSS (34-1)	528	DPRT (40-1)	516	566
	5	T0322	47 28 30.9 N	-122 19 16.8 W	519.6	115.6	404.0	INNR APCH (50-1)	494	TSS (34-1)	531	DPRT (40-1)	518	566
	6	T0323	47 28 31.0 N	-122 19 16.3 W	520.4	125.3	395.1	INNR APCH (50-1)	494	TSS (34-1)	531	DPRT (40-1)	518	566
	7	T0324	47 28 30.5 N	-122 19 16.8 W	520.7	117.3	403.4	INNR APCH (50-1)	493	TSS (34-1)	530	DPRT (40-1)	518	566
RESIDENTIAL - HERNANDEZ KING COUNTY PARCEL 024150-0020	8	T0399	47 28 25.5 N	-122 18 06.1 W	571.9	124.3	447.6	INNR-TRANS	564	TERPS Y	726	DPRT (40-1)	523	584
COMMERCIAL - CHU KING COUNTY PARCEL 322304-9293	9	T0700	47 26 13.3 N	-122 19 12.8 W	375.0	64.5	310.4	INNR APCH (50-1)	378	TSS (34-1)	388	DPRT (40-1)	388	508
RESIDENTIAL - DES MOINES/AMOS/SAGALI KING COUNTY PARCEL 052204-9134	10	T1042	47 25 25.4 N	-122 19 28.8 W	503.2	126.4	376.7	INNR-TRANS	507	TERPS Y	749	DPRT (40-1)	509	n/a
COMMERCIAL - FARMER KING COUNTY PARCEL 768620-0690	11	T1933	47 25 30.2 N	-122 18 59.0 W	495.9	136.8	359.0	INNR APCH (50-1)	465	TERPS W	516	DPRT (40-1)	480	508
RESIDENTIAL - JOHNSTON KING COUNTY PARCEL 024150-0010	12	T0395	47 28 27.0 N	-122 18 06.7 W	503.2	126.4	376.7	INNR-TRANS	559	TERPS Y	726	DPRT (40-1)	527	584
RESIDENTIAL - REDA/TESSAYE KING COUNTY PARCEL 024600-0044	13	T0866	47 25 45.6 N	-122 19 16.6 W	495.9	136.8	359.0	INNR APCH (50-1)	434	TSS (34-1)	470	DPRT (40-1)	458	508
RESIDENTIAL - CHEN KING COUNTY PARCEL 024150-0070	No obstructions located within parcel													
COMMERCIAL - CHU KING COUNTY PARCEL 322304-9022	No obstructions located within parcel													
COMMERCIAL - CHU KING COUNTY PARCEL 322304-9117	No obstructions located within parcel													

Lowest Critical Elevation

Source: 06/2018 LIDAR Survey (Object Top Elevation, Object Height, and Ground Elevation)

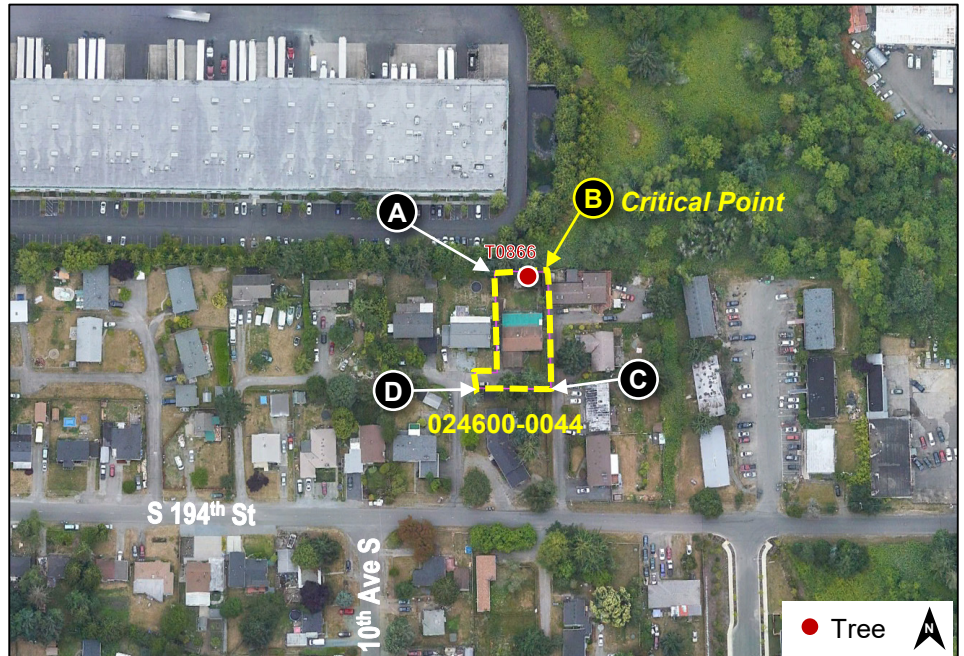
- Notes:
- All distances reported in Feet
 - MSL elevations: Vertical Datum is in NAVD88
 - Object top elevations rounded up and surface elevations rounded down; per FAA standard procedure design rounding practices

RESIDENTIAL - REDA/TESSAYE

KING COUNTY PARCEL 024600-0044

Property Line Detail

	DMS North Latitude	DMS West Longitude	Approach Surface Elev. (MSL)	Departure Surface Elev. (MSL)
A	47 25 45.63 N	-122 19 17.30 W	50-1: 434 ft TSS: 470 ft	40-1: 458 ft LCI: 508 ft
B	47 25 45.61 N	-122 19 16.33 W	50-1: 434 ft TSS: 470 ft	40-1: 458 ft LCI: 508 ft
C	47 25 44.16 N	-122 19 16.30 W	50-1: 436 ft TSS: 474 ft	40-1: 462 ft LCI: 508 ft
D	47 25 44.18 N	-122 19 17.68 W	50-1: 436 ft TSS: 474 ft	40-1: 462 ft LCI: 508 ft



50-1 = Part 77 Inner Approach
TSS = Threshold Sitting Surface
40-1 = Departure Surface
LCI = Low Close-In

Notes:

Point B: Critical point along edge of parcel boundary, closest to the Runway Threshold and Runway Centerline

Note: The graphical boundary for the properties shown are calculated from the available records and have not been field verified.

Obstacle Detail

1 Total Tree

Avigation Easement Analysis														
Parcel Information	#	Tree ID	DMS North Latitude	DMS West Longitude	Object Top Elevation (MSL)	Object Height (AGL)	Ground Elevation (MSL)	Part-77 Surface		Critical Approach Surface		Critical Departure Surface		
								Approach Surface	Surface Elevation (MSL)	Approach Surface	Surface Elevation (MSL)	Departure Surface	Surface Elevation (MSL)	Elevation when Climb Gradient exceeds Low Close-in Criteria
11 Unique Obstacles														
RESIDENTIAL - SINGH KING COUNTY PARCEL 172304-9150	1	T0141	47 28 30.7 N	-122 19 16.1 W	518.1	123.4	394.7	INNR APCH (50-1)	493	TSS (34-1)	530	DPRT (40-1)	518	566
	2	T0312	47 28 30.0 N	-122 19 18.0 W	517.8	100.6	417.2	INNR APCH (50-1)	492	TSS (34-1)	528	DPRT (40-1)	516	566
	3	T0313	47 28 30.0 N	-122 19 17.7 W	516.8	105.0	411.8	INNR APCH (50-1)	492	TSS (34-1)	528	DPRT (40-1)	516	566
	4	T0314	47 28 29.9 N	-122 19 17.4 W	515.3	106.8	408.5	INNR APCH (50-1)	492	TSS (34-1)	528	DPRT (40-1)	516	566
	5	T0322	47 28 30.9 N	-122 19 16.8 W	519.6	115.6	404.0	INNR APCH (50-1)	494	TSS (34-1)	531	DPRT (40-1)	518	566
	6	T0323	47 28 31.0 N	-122 19 16.3 W	520.4	125.3	395.1	INNR APCH (50-1)	494	TSS (34-1)	531	DPRT (40-1)	518	566
	7	T0324	47 28 30.5 N	-122 19 16.8 W	520.7	117.3	403.4	INNR APCH (50-1)	493	TSS (34-1)	530	DPRT (40-1)	518	566
RESIDENTIAL - HERNANDEZ KING COUNTY PARCEL 024150-0020	8	T0399	47 28 25.5 N	-122 18 06.1 W	571.9	124.3	447.6	INNR-TRANS	564	TERPS Y	726	DPRT (40-1)	523	584
COMMERCIAL - CHU KING COUNTY PARCEL 322304-9293	9	T0700	47 26 13.3 N	-122 19 12.8 W	375.0	64.5	310.4	INNR APCH (50-1)	378	TSS (34-1)	388	DPRT (40-1)	388	508
RESIDENTIAL - DES MOINES/AMOS/SAGALI KING COUNTY PARCEL 052204-9134	10	T1042	47 25 25.4 N	-122 19 28.8 W	503.2	126.4	376.7	INNR-TRANS	507	TERPS Y	749	DPRT (40-1)	509	n/a
COMMERCIAL - FARMER KING COUNTY PARCEL 768620-0690	11	T1933	47 25 30.2 N	-122 18 59.0 W	495.9	136.8	359.0	INNR APCH (50-1)	465	TERPS W	516	DPRT (40-1)	480	508
RESIDENTIAL - JOHNSTON KING COUNTY PARCEL 024150-0010	12	T0395	47 28 27.0 N	-122 18 06.7 W	503.2	126.4	376.7	INNR-TRANS	559	TERPS Y	726	DPRT (40-1)	527	584
RESIDENTIAL - REDA/TESSAYE KING COUNTY PARCEL 024600-0044	13	T0866	47 25 45.6 N	-122 19 16.6 W	495.9	136.8	359.0	INNR APCH (50-1)	434	TSS (34-1)	470	DPRT (40-1)	458	508
RESIDENTIAL - CHEN KING COUNTY PARCEL 024150-0070	No obstructions located within parcel													
COMMERCIAL - CHU KING COUNTY PARCEL 322304-9022														
COMMERCIAL - CHU KING COUNTY PARCEL 322304-9117														

Lowest Critical Elevation

Source: 06/2018 LIDAR Survey (Object Top Elevation, Object Height, and Ground Elevation)

- Notes:
- All distances reported in Feet
 - MSL elevations: Vertical Datum is in NAVD88
 - Object top elevations rounded up and surface elevations rounded down; per FAA standard procedure design rounding practices

RESIDENTIAL - CHEN

KING COUNTY PARCEL 024150-0070

Property Line Detail

	DMS North Latitude	DMS West Longitude	Approach Surface Elev. (MSL)	Departure Surface Elev. (MSL)
A	47 28 25.91 N	-122 18 06.26 W	INTR: 565 ft TERP: 727 ft	40-1: 524 ft LCI: 584 ft
B	47 28 25.93 N	-122 18 04.34 W	HORZ: 582 ft TERP: 682 ft	40-1: n/a ft LCI: n/a ft
C	47 28 25.20 N	-122 18 04.34 W	HORZ: 582 ft TERP: 681 ft	40-1: n/a ft LCI: n/a ft
D	47 28 25.18 N	-122 18 06.26 W	INTR: 565 ft TERP: 725 ft	40-1: 522 ft LCI: 584 ft



INTR = Part 77 Inner Transitional
 HORZ = Part 77 Horizontal Surface
 TERP = TERPS W, X, or Y
 40-1 = Departure Surface
 LCI = Low Close-in

Notes:

Point C: Critical point along edge of parcel boundary, closest to the Runway Threshold and Runway Centerline

Note: The graphical boundary for the properties shown are calculated from the available records and have not been field verified.

Obstacle Detail

No obstructions located within this parcel

Avigation Easement Analysis														
Parcel Information	#	Tree ID	DMS North Latitude	DMS West Longitude	Object Top Elevation (MSL)	Object Height (AGL)	Ground Elevation (MSL)	Part-77 Surface		Critical Approach Surface		Critical Departure Surface		
								Approach Surface	Surface Elevation (MSL)	Approach Surface	Surface Elevation (MSL)	Departure Surface	Surface Elevation (MSL)	Elevation when Climb Gradient exceeds Low Close-in Criteria
11 Unique Obstacles														
RESIDENTIAL - SINGH KING COUNTY PARCEL 172304-9150	1	T0141	47 28 30.7 N	-122 19 16.1 W	518.1	123.4	394.7	INNRP APCH (50-1)	493	TSS (34-1)	530	DPRT (40-1)	518	566
	2	T0312	47 28 30.0 N	-122 19 18.0 W	517.8	100.6	417.2	INNRP APCH (50-1)	492	TSS (34-1)	528	DPRT (40-1)	516	566
	3	T0313	47 28 30.0 N	-122 19 17.7 W	516.8	105.0	411.8	INNRP APCH (50-1)	492	TSS (34-1)	528	DPRT (40-1)	516	566
	4	T0314	47 28 29.9 N	-122 19 17.4 W	515.3	106.8	408.5	INNRP APCH (50-1)	492	TSS (34-1)	528	DPRT (40-1)	516	566
	5	T0322	47 28 30.9 N	-122 19 16.8 W	519.6	115.6	404.0	INNRP APCH (50-1)	494	TSS (34-1)	531	DPRT (40-1)	518	566
	6	T0323	47 28 31.0 N	-122 19 16.3 W	520.4	125.3	395.1	INNRP APCH (50-1)	494	TSS (34-1)	531	DPRT (40-1)	518	566
	7	T0324	47 28 30.5 N	-122 19 16.8 W	520.7	117.3	403.4	INNRP APCH (50-1)	493	TSS (34-1)	530	DPRT (40-1)	518	566
RESIDENTIAL - HERNANDEZ KING COUNTY PARCEL 024150-0020	8	T0399	47 28 25.5 N	-122 18 06.1 W	571.9	124.3	447.6	INNRP-TRANS	564	TERPS Y	726	DPRT (40-1)	523	584
COMMERCIAL - CHU KING COUNTY PARCEL 322304-9293	9	T0700	47 26 13.3 N	-122 19 12.8 W	375.0	64.5	310.4	INNRP APCH (50-1)	378	TSS (34-1)	388	DPRT (40-1)	388	508
RESIDENTIAL - DES MOINES/AMOS/SAGALI KING COUNTY PARCEL 052204-9134	10	T1042	47 25 25.4 N	-122 19 28.8 W	503.2	126.4	376.7	INNRP-TRANS	507	TERPS Y	749	DPRT (40-1)	509	n/a
COMMERCIAL - FARMER KING COUNTY PARCEL 768620-0690	11	T1933	47 25 30.2 N	-122 18 59.0 W	495.9	136.8	359.0	INNRP APCH (50-1)	465	TERPS W	516	DPRT (40-1)	480	508
RESIDENTIAL - JOHNSTON KING COUNTY PARCEL 024150-0010	12	T0395	47 28 27.0 N	-122 18 06.7 W	503.2	126.4	376.7	INNRP-TRANS	559	TERPS Y	726	DPRT (40-1)	527	584
RESIDENTIAL - REDA/TESSAYE KING COUNTY PARCEL 024600-0044	13	T0866	47 25 45.6 N	-122 19 16.6 W	495.9	136.8	359.0	INNRP APCH (50-1)	434	TSS (34-1)	470	DPRT (40-1)	458	508
RESIDENTIAL - CHEN KING COUNTY PARCEL 024150-0070	No obstructions located within parcel													
COMMERCIAL - CHU KING COUNTY PARCEL 322304-9022														
COMMERCIAL - CHU KING COUNTY PARCEL 322304-9117														

Lowest Critical Elevation

Source: 06/2018 LIDAR Survey (Object Top Elevation, Object Height, and Ground Elevation)

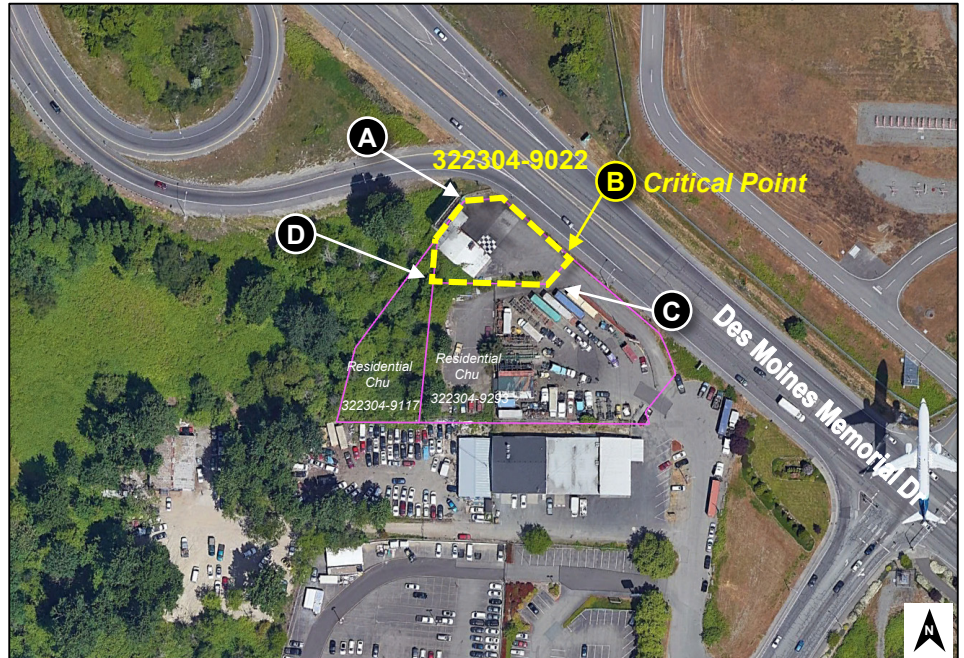
- Notes:
- All distances reported in Feet
 - MSL elevations: Vertical Datum is in NAVD88
 - Object top elevations rounded up and surface elevations rounded down; per FAA standard procedure design rounding practices

COMMERCIAL - CHU

KING COUNTY PARCEL 322304-9022

Property Line Detail

	DMS North Latitude	DMS West Longitude	Approach Surface Elev. (MSL)	Departure Surface Elev. (MSL)
A	47 26 14.94 N	-122 19 12.65 W	50-1: 374 ft TSS: 384 ft	40-1: 384 ft LCI: 508 ft
B	47 26 14.36 N	-122 19 10.86 W	50-1: 375 ft TSS: 384 ft	40-1: 385 ft LCI: 508 ft
C	47 26 14.05 N	-122 19 11.22 W	50-1: 376 ft TSS: 385 ft	40-1: 386 ft LCI: 508 ft
D	47 26 14.02 N	-122 19 13.11 W	50-1: 376 ft TSS: 385 ft	40-1: 386 ft LCI: 508 ft



50-1 = Part 77 Inner Approach
TSS = Threshold Sitting Surface
40-1 = Departure Surface
LCI = Low Close-In

Notes:

Point B: Critical point along edge of parcel boundary, closest to the Runway Threshold and Runway Centerline

Note: The graphical boundary for the properties shown are calculated from the available records and have not been field verified.

Obstacle Detail

No obstructions located within this parcel

Avigation Easement Analysis														
Parcel Information	#	Tree ID	DMS North Latitude	DMS West Longitude	Object Top Elevation (MSL)	Object Height (AGL)	Ground Elevation (MSL)	Part-77 Surface		Critical Approach Surface		Critical Departure Surface		
								Approach Surface	Surface Elevation (MSL)	Approach Surface	Surface Elevation (MSL)	Departure Surface	Surface Elevation (MSL)	Elevation when Climb Gradient exceeds Low Close-In Criteria
11 Unique Obstacles														
RESIDENTIAL - SINGH KING COUNTY PARCEL 172304-9150	1	T0141	47 28 30.7 N	-122 19 16.1 W	518.1	123.4	394.7	INNR APCH (50-1)	493	TSS (34-1)	530	DPRT (40-1)	518	566
	2	T0312	47 28 30.0 N	-122 19 18.0 W	517.8	100.6	417.2	INNR APCH (50-1)	492	TSS (34-1)	528	DPRT (40-1)	516	566
	3	T0313	47 28 30.0 N	-122 19 17.7 W	516.8	105.0	411.8	INNR APCH (50-1)	492	TSS (34-1)	528	DPRT (40-1)	516	566
	4	T0314	47 28 29.9 N	-122 19 17.4 W	515.3	106.8	408.5	INNR APCH (50-1)	492	TSS (34-1)	528	DPRT (40-1)	516	566
	5	T0322	47 28 30.9 N	-122 19 16.8 W	519.6	115.6	404.0	INNR APCH (50-1)	494	TSS (34-1)	531	DPRT (40-1)	518	566
	6	T0323	47 28 31.0 N	-122 19 16.3 W	520.4	125.3	395.1	INNR APCH (50-1)	494	TSS (34-1)	531	DPRT (40-1)	518	566
	7	T0324	47 28 30.5 N	-122 19 16.8 W	520.7	117.3	403.4	INNR APCH (50-1)	493	TSS (34-1)	530	DPRT (40-1)	518	566
RESIDENTIAL - HERNANDEZ KING COUNTY PARCEL 024150-0020	8	T0399	47 28 25.5 N	-122 18 06.1 W	571.9	124.3	447.6	INNR-TRANS	564	TERPS Y	726	DPRT (40-1)	523	584
COMMERCIAL - CHU KING COUNTY PARCEL 322304-9293	9	T0700	47 26 13.3 N	-122 19 12.8 W	375.0	64.5	310.4	INNR APCH (50-1)	378	TSS (34-1)	388	DPRT (40-1)	388	508
RESIDENTIAL - DES MOINES/AMOS/SAGALI KING COUNTY PARCEL 052204-9134	10	T1042	47 25 25.4 N	-122 19 28.8 W	503.2	126.4	376.7	INNR-TRANS	507	TERPS Y	749	DPRT (40-1)	509	n/a
COMMERCIAL - FARMER KING COUNTY PARCEL 768620-0690	11	T1933	47 25 30.2 N	-122 18 59.0 W	495.9	136.8	359.0	INNR APCH (50-1)	465	TERPS W	516	DPRT (40-1)	480	508
RESIDENTIAL - JOHNSTON KING COUNTY PARCEL 024150-0010	12	T0395	47 28 27.0 N	-122 18 06.7 W	503.2	126.4	376.7	INNR-TRANS	559	TERPS Y	726	DPRT (40-1)	527	584
RESIDENTIAL - REDA/TESSAYE KING COUNTY PARCEL 024600-0044	13	T0866	47 25 45.6 N	-122 19 16.6 W	495.9	136.8	359.0	INNR APCH (50-1)	434	TSS (34-1)	470	DPRT (40-1)	458	508
RESIDENTIAL - CHEN KING COUNTY PARCEL 024150-0070	<div style="display: flex; align-items: center; justify-content: center;"> ← <div style="text-align: center;"> <p>No obstructions located within parcel</p> </div> </div>													
COMMERCIAL - CHU KING COUNTY PARCEL 322304-9022														
COMMERCIAL - CHU KING COUNTY PARCEL 322304-9117														

Lowest Critical Elevation

Source: 06/2018 LIDAR Survey (Object Top Elevation, Object Height, and Ground Elevation)

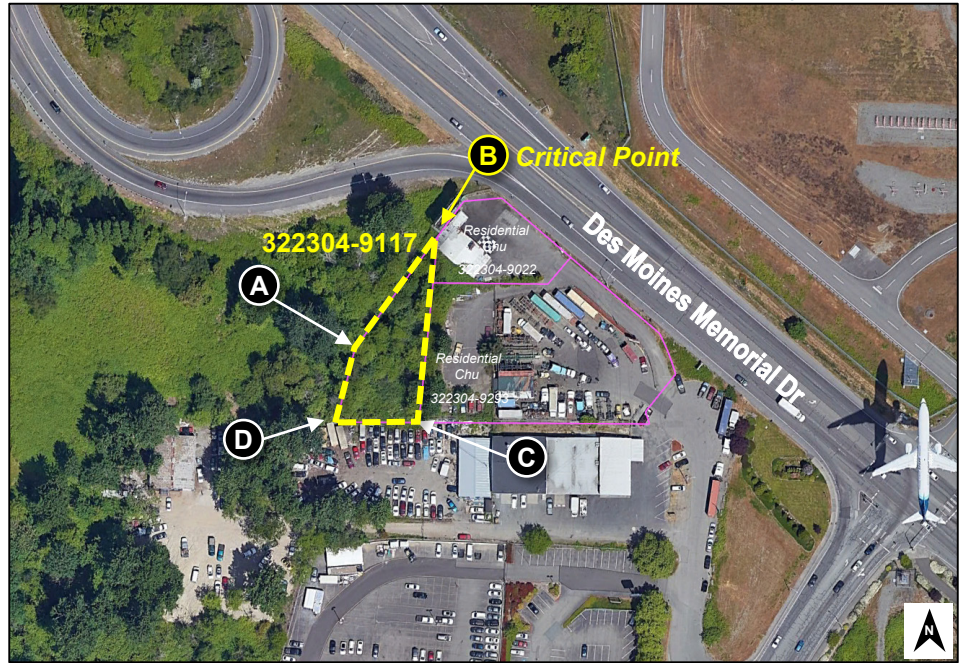
- Notes:
- All distances reported in Feet
 - MSL elevations: Vertical Datum is in NAVD88
 - Object top elevations rounded up and surface elevations rounded down; per FAA standard procedure design rounding practices

COMMERCIAL - CHU

KING COUNTY PARCEL 322304-9117

Property Line Detail

	DMS North Latitude	DMS West Longitude	Approach Surface Elev. (MSL)	Departure Surface Elev. (MSL)
A	47 26 13.27 N	-122 19 14.36 W	50-1: 377 ft TERP: 437 ft	40-1: 388 ft LCI: 508 ft
B	47 26 14.54 N	-122 19 13.05 W	50-1: 375 ft TERP: 412 ft	40-1: 385 ft LCI: 508 ft
C	47 26 12.46 N	-122 19 13.27 W	50-1: 379 ft TSS: 390 ft	40-1: 390 ft LCI: 508 ft
D	47 26 12.44 N	-122 19 14.63 W	50-1: 379 ft TERP: 443 ft	40-1: 390 ft LCI: 508 ft



50-1 = Part 77 Inner Approach
 TSS = Threshold Sitting Surface
 TERP = TERPS W, X, or Y
 40-1 = Departure Surface
 LCI = Low Close-in

Notes:

Point B: Critical point along edge of parcel boundary, closest to the Runway Threshold and Runway Centerline

Note: The graphical boundary for the properties shown are calculated from the available records and have not been field verified.

Obstacle Detail

No obstructions located within this parcel

Avigation Easement Analysis														
Parcel Information	#	Tree ID	DMS North Latitude	DMS West Longitude	Object Top Elevation (MSL)	Object Height (AGL)	Ground Elevation (MSL)	Part-77 Surface		Critical Approach Surface		Critical Departure Surface		
								Approach Surface	Surface Elevation (MSL)	Approach Surface	Surface Elevation (MSL)	Departure Surface	Surface Elevation (MSL)	Elevation when Climb Gradient exceeds Low Close-in Criteria
11 Unique Obstacles														
RESIDENTIAL - SINGH KING COUNTY PARCEL 172304-9150	1	T0141	47 28 30.7 N	-122 19 16.1 W	518.1	123.4	394.7	INNRP APCH (50-1)	493	TSS (34-1)	530	DPRT (40-1)	518	566
	2	T0312	47 28 30.0 N	-122 19 18.0 W	517.8	100.6	417.2	INNRP APCH (50-1)	492	TSS (34-1)	528	DPRT (40-1)	516	566
	3	T0313	47 28 30.0 N	-122 19 17.7 W	516.8	105.0	411.8	INNRP APCH (50-1)	492	TSS (34-1)	528	DPRT (40-1)	516	566
	4	T0314	47 28 29.9 N	-122 19 17.4 W	515.3	106.8	408.5	INNRP APCH (50-1)	492	TSS (34-1)	528	DPRT (40-1)	516	566
	5	T0322	47 28 30.9 N	-122 19 16.8 W	519.6	115.6	404.0	INNRP APCH (50-1)	494	TSS (34-1)	531	DPRT (40-1)	518	566
	6	T0323	47 28 31.0 N	-122 19 16.3 W	520.4	125.3	395.1	INNRP APCH (50-1)	494	TSS (34-1)	531	DPRT (40-1)	518	566
	7	T0324	47 28 30.5 N	-122 19 16.8 W	520.7	117.3	403.4	INNRP APCH (50-1)	493	TSS (34-1)	530	DPRT (40-1)	518	566
RESIDENTIAL - HERNANDEZ KING COUNTY PARCEL 024150-0020	8	T0399	47 28 25.5 N	-122 18 06.1 W	571.9	124.3	447.6	INNRP-TRANS	564	TERPS Y	726	DPRT (40-1)	523	584
COMMERCIAL - CHU KING COUNTY PARCEL 322304-9293	9	T0700	47 26 13.3 N	-122 19 12.8 W	375.0	64.5	310.4	INNRP APCH (50-1)	378	TSS (34-1)	388	DPRT (40-1)	388	508
RESIDENTIAL - DES MOINES/AMOS/SAGALI KING COUNTY PARCEL 052204-9134	10	T1042	47 25 25.4 N	-122 19 28.8 W	503.2	126.4	376.7	INNRP-TRANS	507	TERPS Y	749	DPRT (40-1)	509	n/a
COMMERCIAL - FARMER KING COUNTY PARCEL 768620-0690	11	T1933	47 25 30.2 N	-122 18 59.0 W	495.9	136.8	359.0	INNRP APCH (50-1)	465	TERPS W	516	DPRT (40-1)	480	508
RESIDENTIAL - JOHNSTON KING COUNTY PARCEL 024150-0010	12	T0395	47 28 27.0 N	-122 18 06.7 W	503.2	126.4	376.7	INNRP-TRANS	559	TERPS Y	726	DPRT (40-1)	527	584
RESIDENTIAL - REDA/TESSAYE KING COUNTY PARCEL 024600-0044	13	T0866	47 25 45.6 N	-122 19 16.6 W	495.9	136.8	359.0	INNRP APCH (50-1)	434	TSS (34-1)	470	DPRT (40-1)	458	508
RESIDENTIAL - CHEN KING COUNTY PARCEL 024150-0070	No obstructions located within parcel													
COMMERCIAL - CHU KING COUNTY PARCEL 322304-9022														
COMMERCIAL - CHU KING COUNTY PARCEL 322304-9117														

Lowest Critical Elevation

Source: 06/2018 LIDAR Survey (Object Top Elevation, Object Height, and Ground Elevation)

- Notes:
- All distances reported in Feet
 - MSL elevations: Vertical Datum is in NAVD88
 - Object top elevations rounded up and surface elevations rounded down; per FAA standard procedure design rounding practices