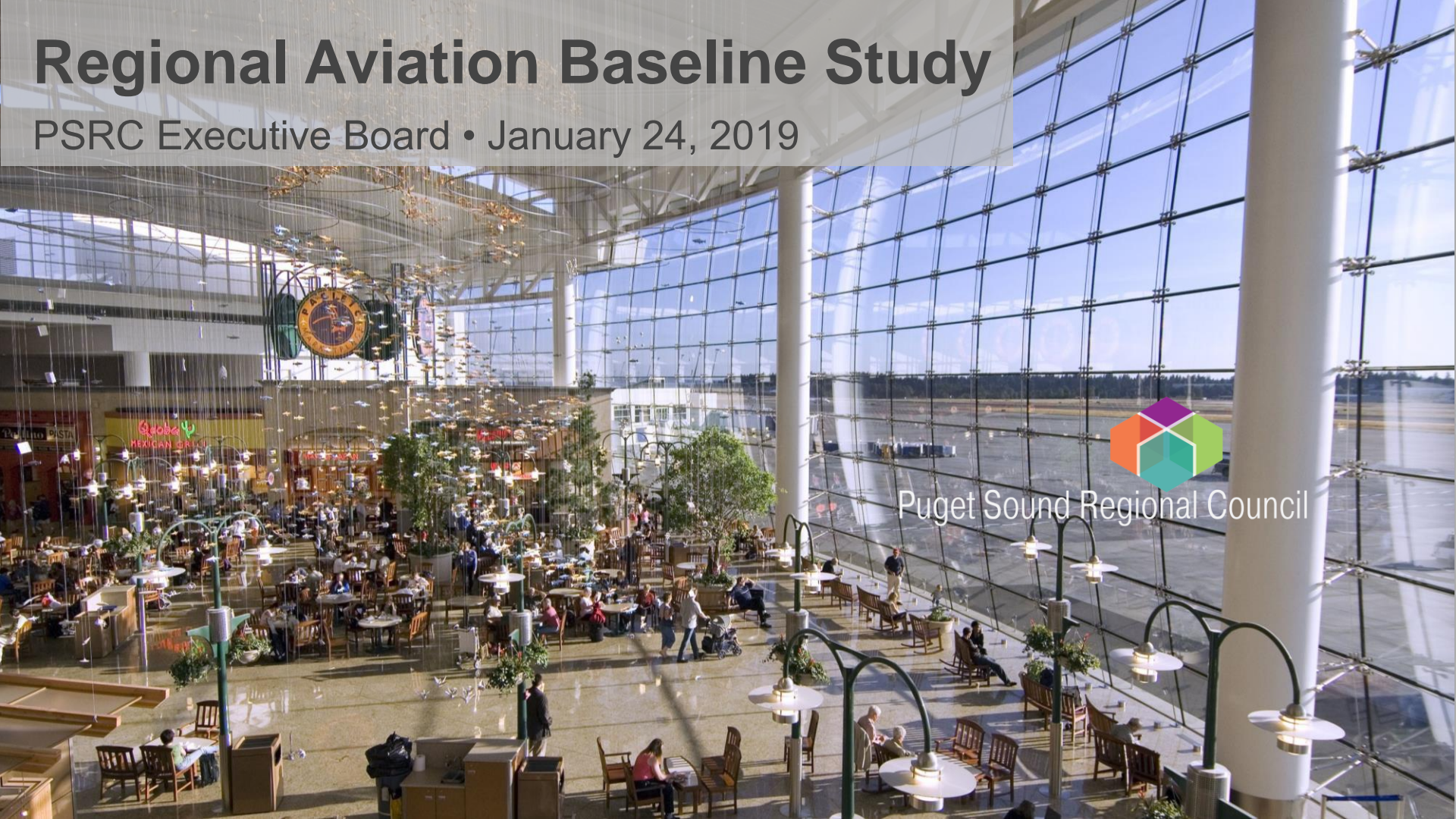


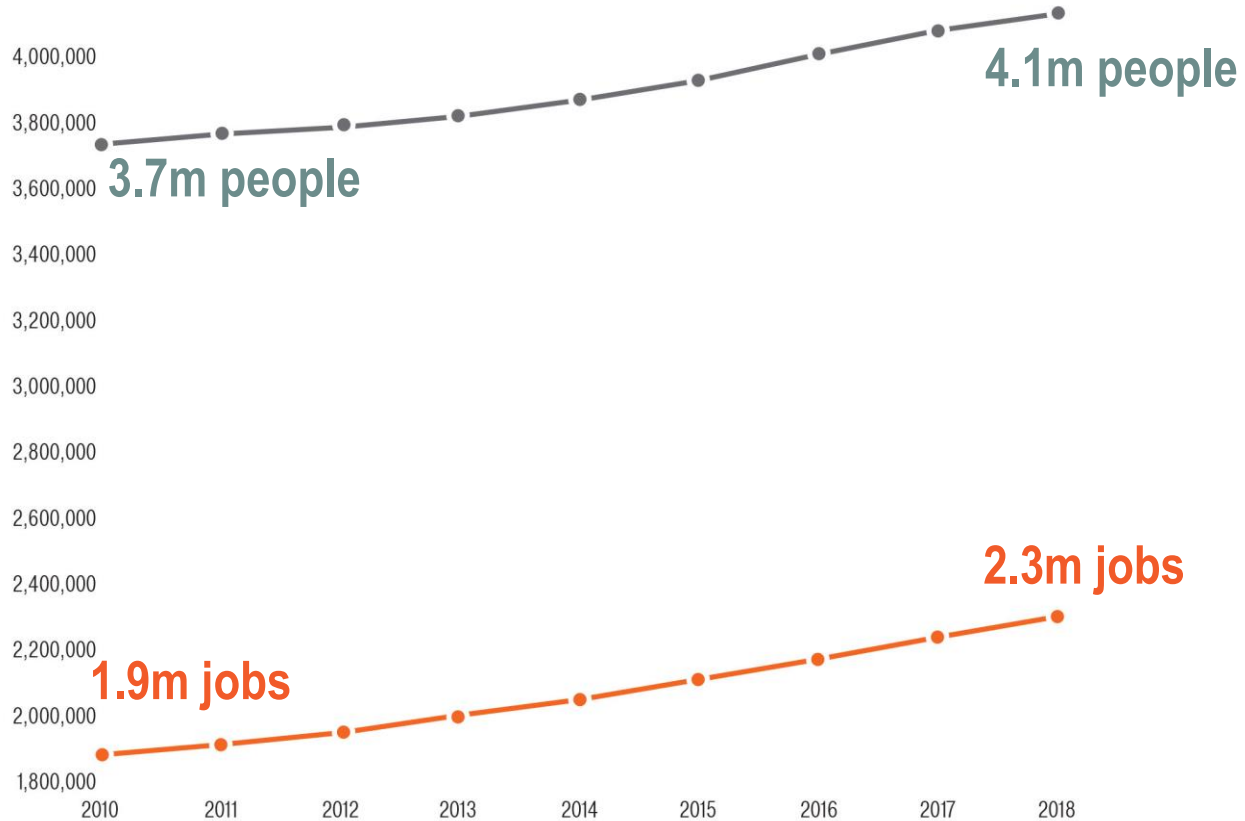
# Regional Aviation Baseline Study

PSRC Executive Board • January 24, 2019

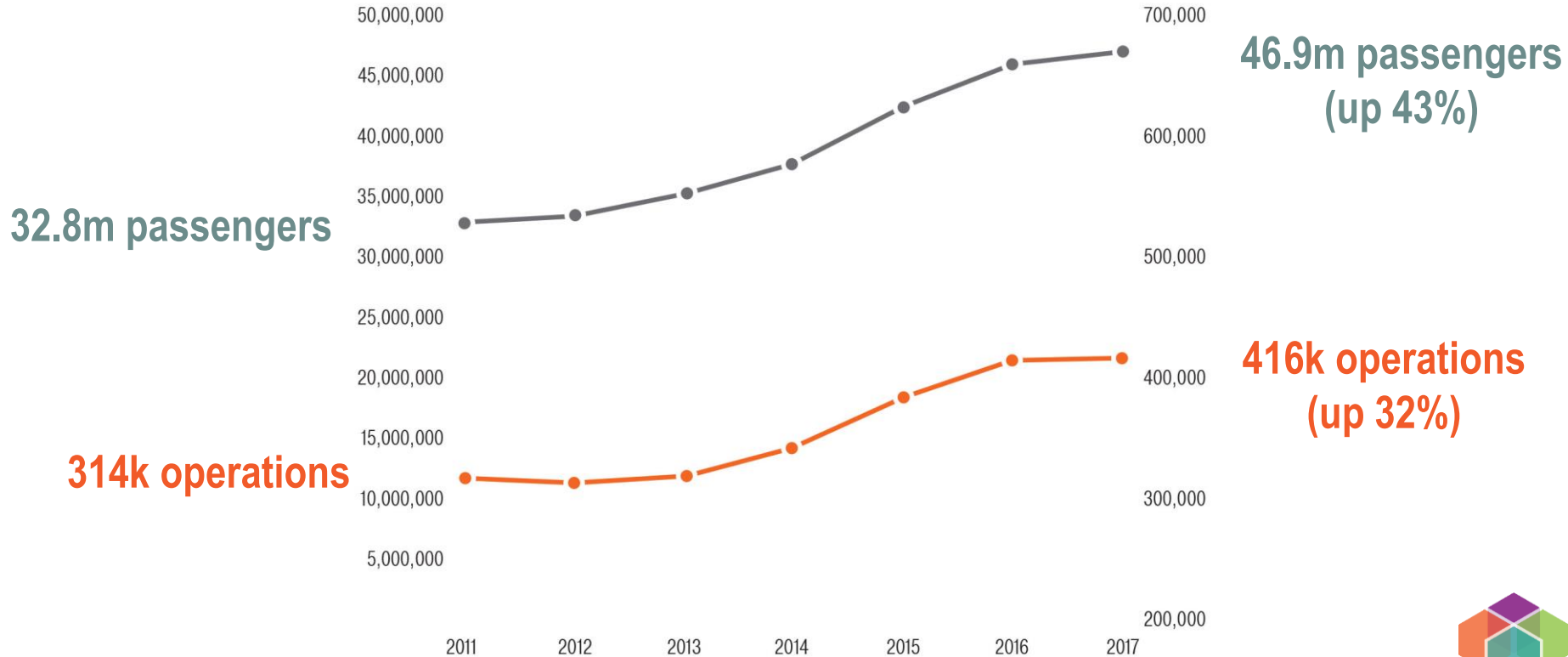


Puget Sound Regional Council

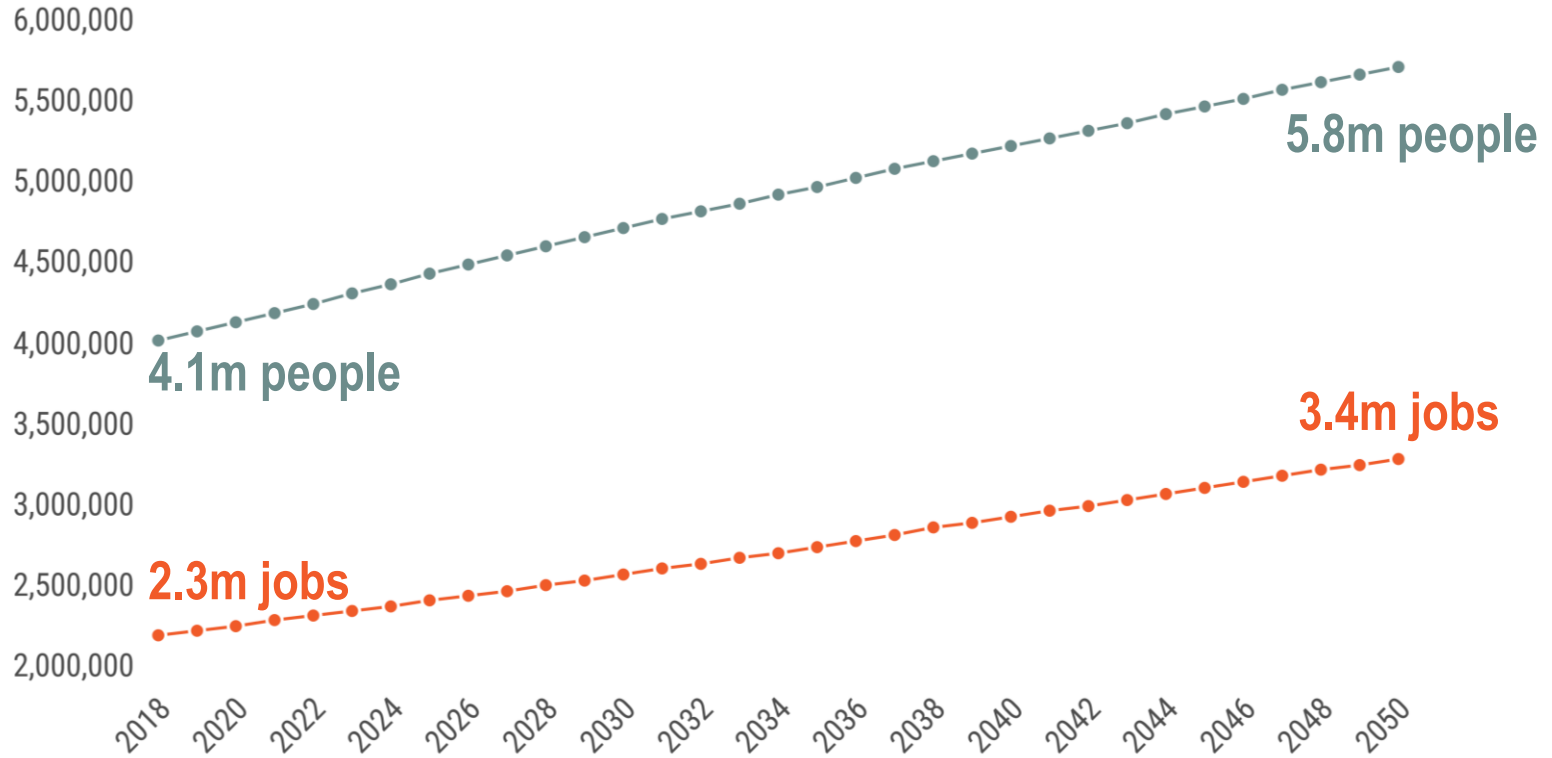
# Growth in the Central Puget Sound Region



# Aviation Demand - Sea-Tac Airport



# Getting ready for 2050



# Adopted Policy

- Region should maximize aviation capacity within the existing regional airport system before constructing new airports
- State will play a lead role in addressing aviation capacity needs and place a priority on funding and planning the state's air transportation system
- When additional capacity is forecast to be needed, and no feasible airport capacity is available in the region, the state will take the lead role in addressing capacity needs, including by funding a site selection study for the placement of new airport(s) if no sponsor is available.

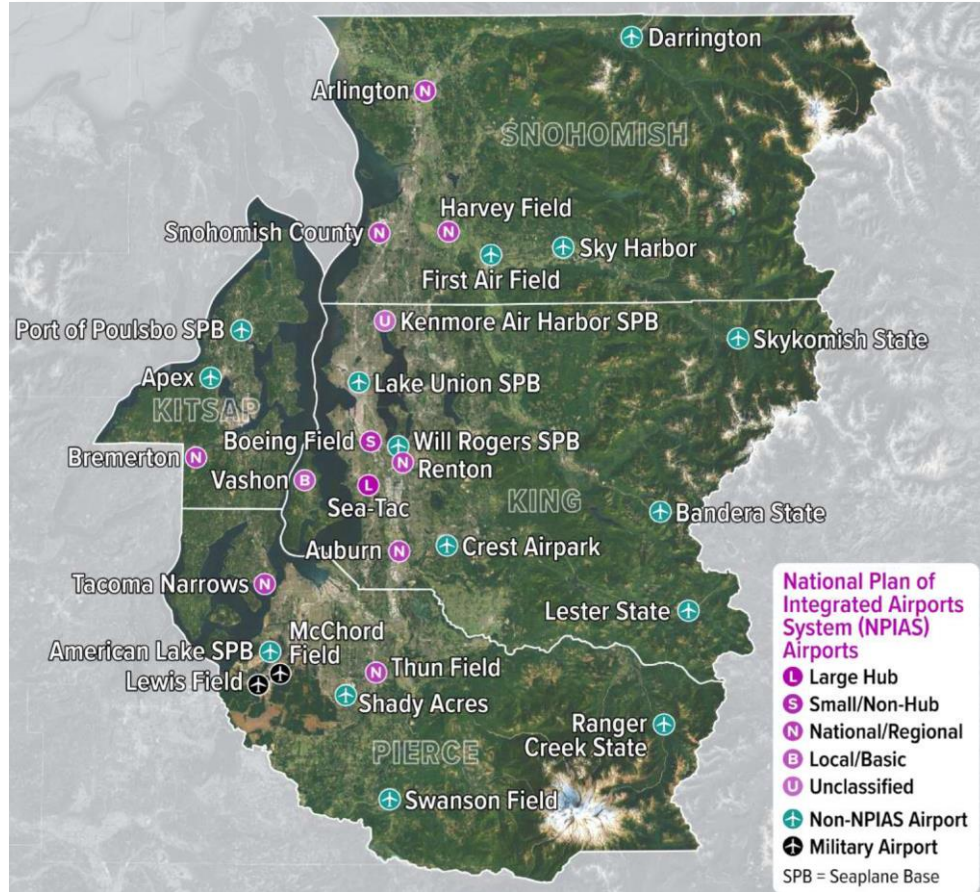


# Regional Aviation Baseline Study

- Identify the roles of each airport and the aviation activities within the study area based on existing planning efforts.
- Provide a regional perspective on how aviation activities at airports in the study area interact with each other, the community and the broader economy.
- Obtain input from stakeholders about their needs and build a common understanding about aviation and airspace constraints.
- Identify future aviation needs within central Puget Sound Region and set the stage for future planning



# Regional Airports



# Airport Visits





# Outreach to Date

Alaska Airlines  
Arlington Municipal Airport  
Auburn Municipal Airport  
Bremerton National Airport  
City of Burien  
Delta Airlines  
City of Des Moines  
City of Federal Way  
King County  
King County Intl. Airport/Boeing Field  
City of Mukilteo  
City of Normandy Park

Paine Field  
Port of Seattle  
Renton Municipal Airport  
City of SeaTac  
Sea-Tac Airport  
Seattle Metropolitan Chamber of Commerce  
Seattle Southside Chamber of Commerce  
Swanson Airport\*  
Tacoma Narrows Airport\*  
Thun Field\*  
Tomorrow @Sea-Tac  
City of Tukwila

\* - Scheduled



# Study Phases



## Airport & Aviation Activity Analysis

(Summer 2019)

- Existing conditions & constraints
- Market trends & forecasts
- Economic analysis

## Future Aviation Issues Analysis

(Fall 2019)

- Future landside & airside capacity needs
- Analysis by activity and by airport
- Major challenges

## Scenarios Definition and Evaluation

(Spring 2020)

- Identify and analyze scenarios
- Identify potential next steps

## Project Completion

(Fall 2020)

- Public & stakeholder briefings
- Public comment
- Finalize report



Thank you

