

# Aircraft Service International, Inc.

18291 Starling Road  
SeaTac, WA 98158

## Aircraft Service International Lease Information

| Property | Total Parcel Size | Expiration Date | Renewal Options | Holdover       | Termination Clause                        | Relocation Clause         |
|----------|-------------------|-----------------|-----------------|----------------|---|---------------------------|
| Lease #  | Square Footage    |                 |                 |                |   |                           |
| #000765  | 29,569 sq. ft.    | 04/30/2021      | No              | Month-to-Month | Port 180 Days Notice for Capital Projects | Relocation 30 days notice |

## Tenant General Information

|              |  |
|--------------|--|
| Current Use: | General Aviation Terminal                |
| Location:    | South-end of Airfield (Inside the fence) |
| City:        | SeaTac                                   |

## Restrictions of Use—Based on Funding

| Bonds                   | Airport Improvement Project Fund (AIP) |
|-------------------------|--|
| Please Call for Details | Please Call for Details                |

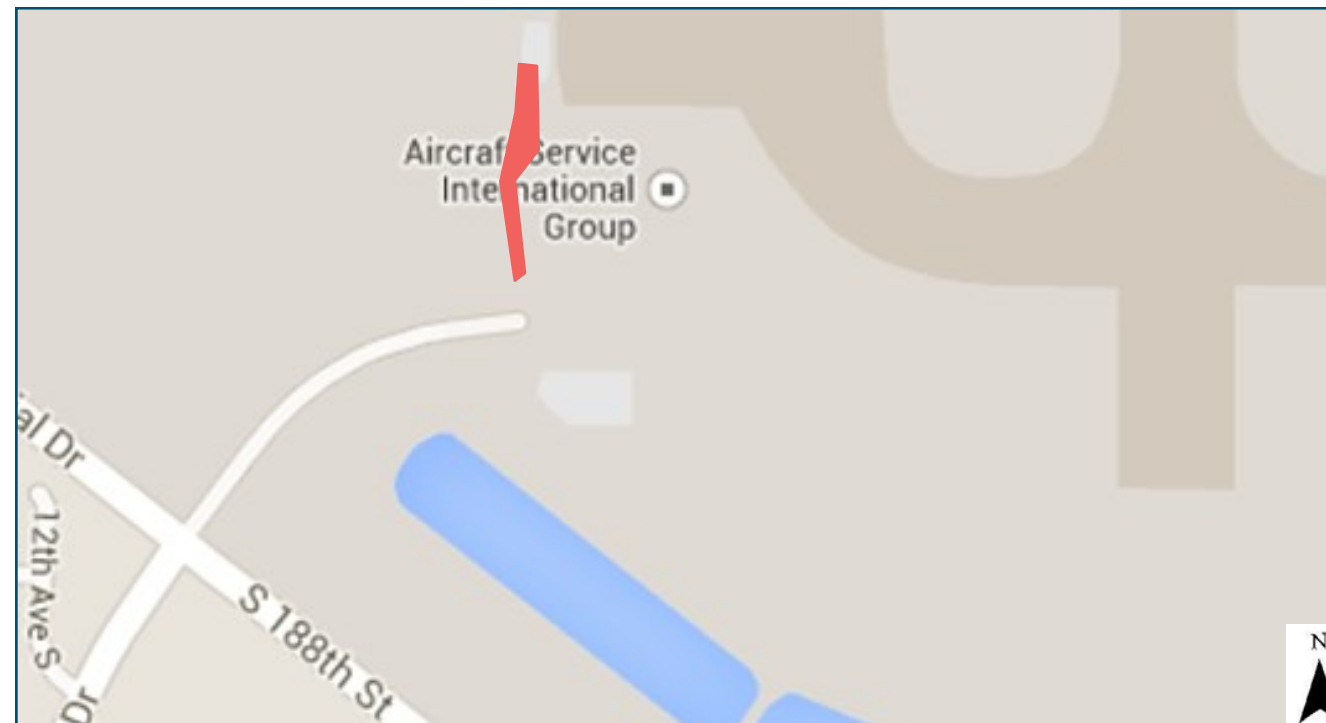
Before modifying use of property assess bonds restrictions by contacting Corporate Finance & Budget.  
Access AIP's by contacting Airport Finance & Budget.

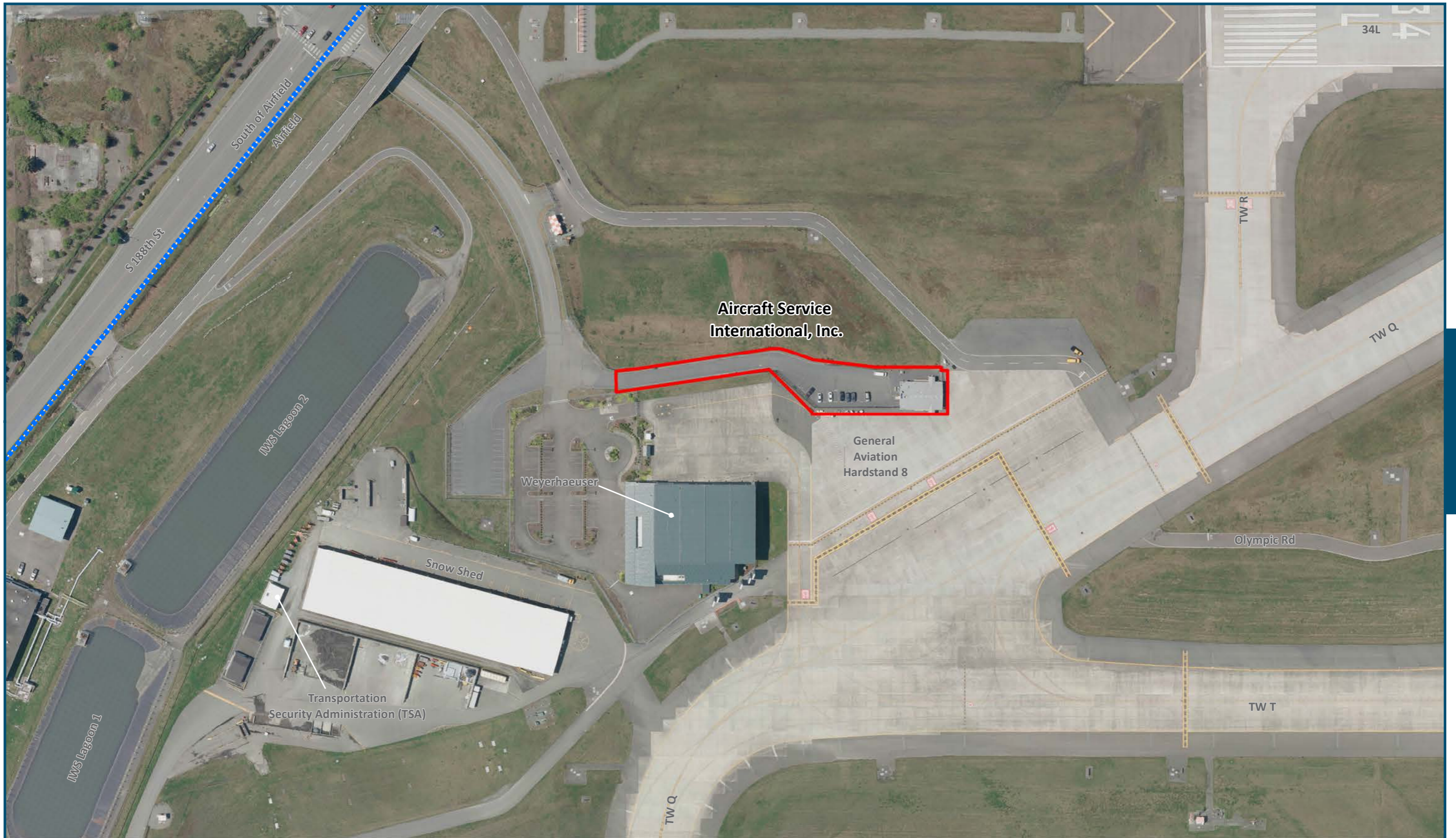
## King County Parcel #'s

#2823049016

## Historical and Other Names

FBO (Fixed Base Operator)



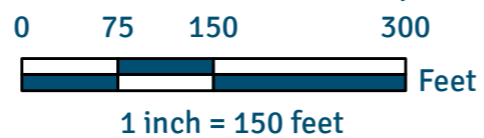


# Aircraft Service International, Inc.

## Lease #000765

Date Published: 12-31-2014

Disclaimer: This map is for general reference only. Data Layers that appear on this map may or may not be accurate, current, or otherwise reliable. THIS MAP IS NOT TO BE USED FOR NAVIGATION.



----- Zone Matchline Boundary  
----- Port of Seattle Lease Boundary

Aerial Photo Taken Spring 2012