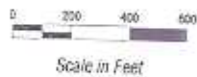


Prepared by Paramec, Inc. File: seakc201010102007\blotopre-post1-11x17.gra Date: February 26, 2002

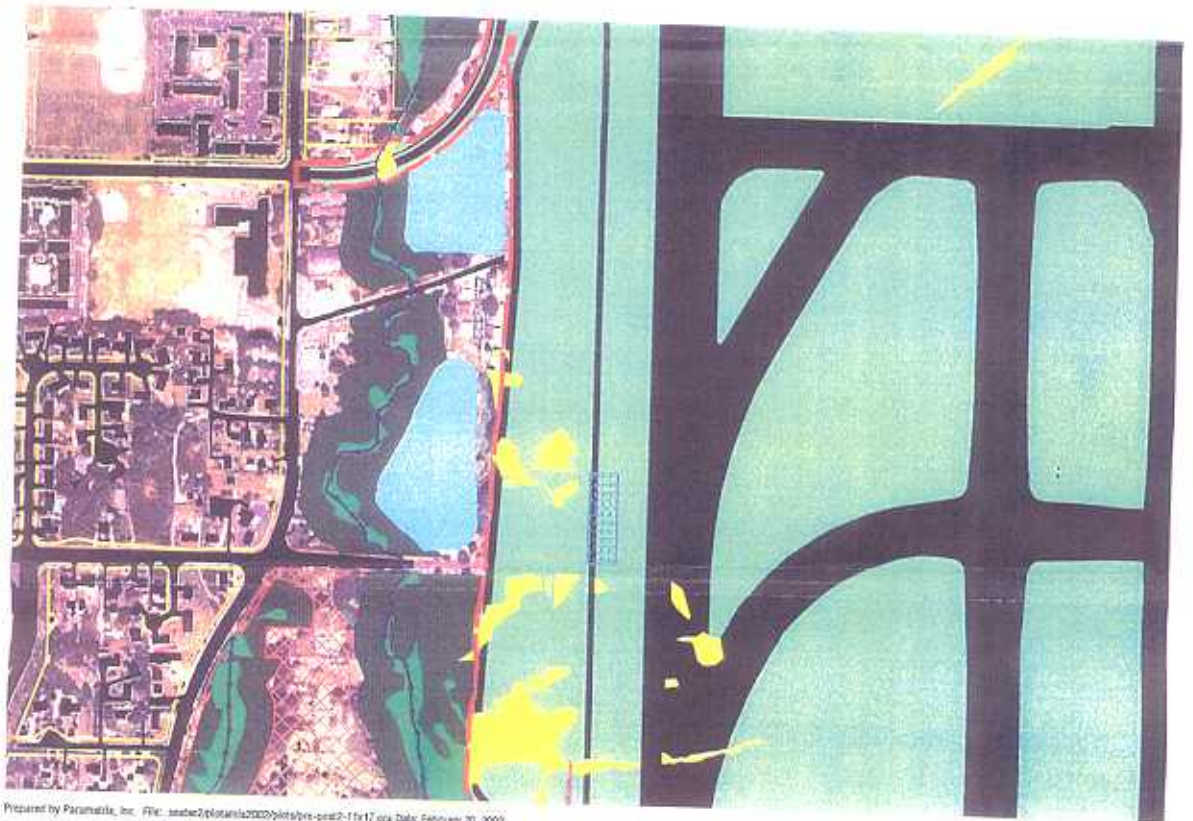
AR 053454

1323



- | | | |
|---------------------------------|--------------------------|--------------|
| Impervious Surfaces | Stormwater Vaults | Miller Creek |
| Wetlands | Permanent Impact Area | |
| Proposed Wetlands | Prior Converted Cropland | |
| Stormwater Detention Facilities | Water Features | |
| Mitigation Area Buffers | Parcel Boundary | |
| | Permitted Impact Line | |
| | MSE Wall | |

Sheet 1 of 8
Existing (Top)
and Post Project
Conditions (Bottom)



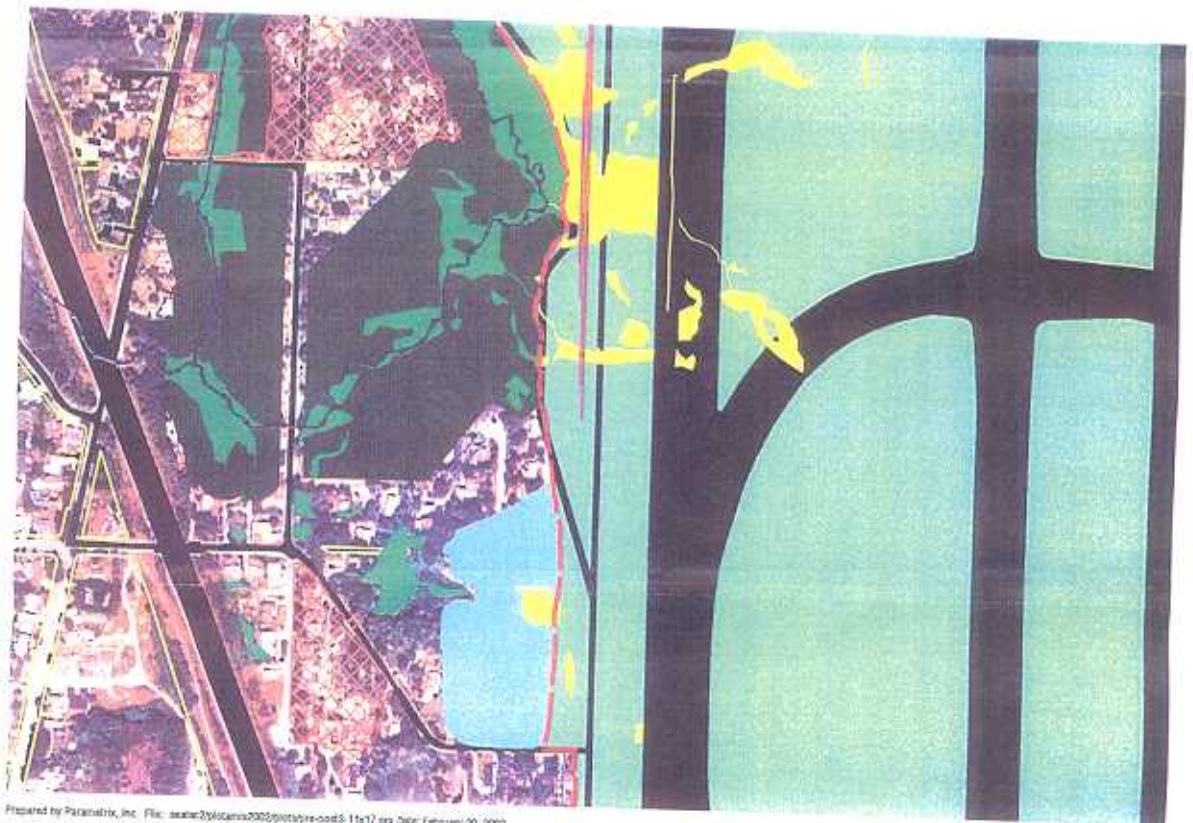
Prepared by Parametrix, Inc. File: sstater2\lotaria\2002\plots\pre-post2-11x17.gia Date: February 20, 2002

AR 053455



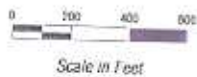
- | | |
|---------------------------------|------------------------|
| Impervious Surface | Stormwater Vault |
| Wetlands | Access/Navigation Aids |
| Impacted Wetlands | Permanent Impact Areas |
| Stormwater Detention Facilities | Parcel Boundary |
| Mitigation Area Buffer | Permanent Impact Line |
| | MSJ Wall |
| | Mill Creek |

Sheet 2 of 8
Existing (Top)
and Post Project
Conditions (Bottom)



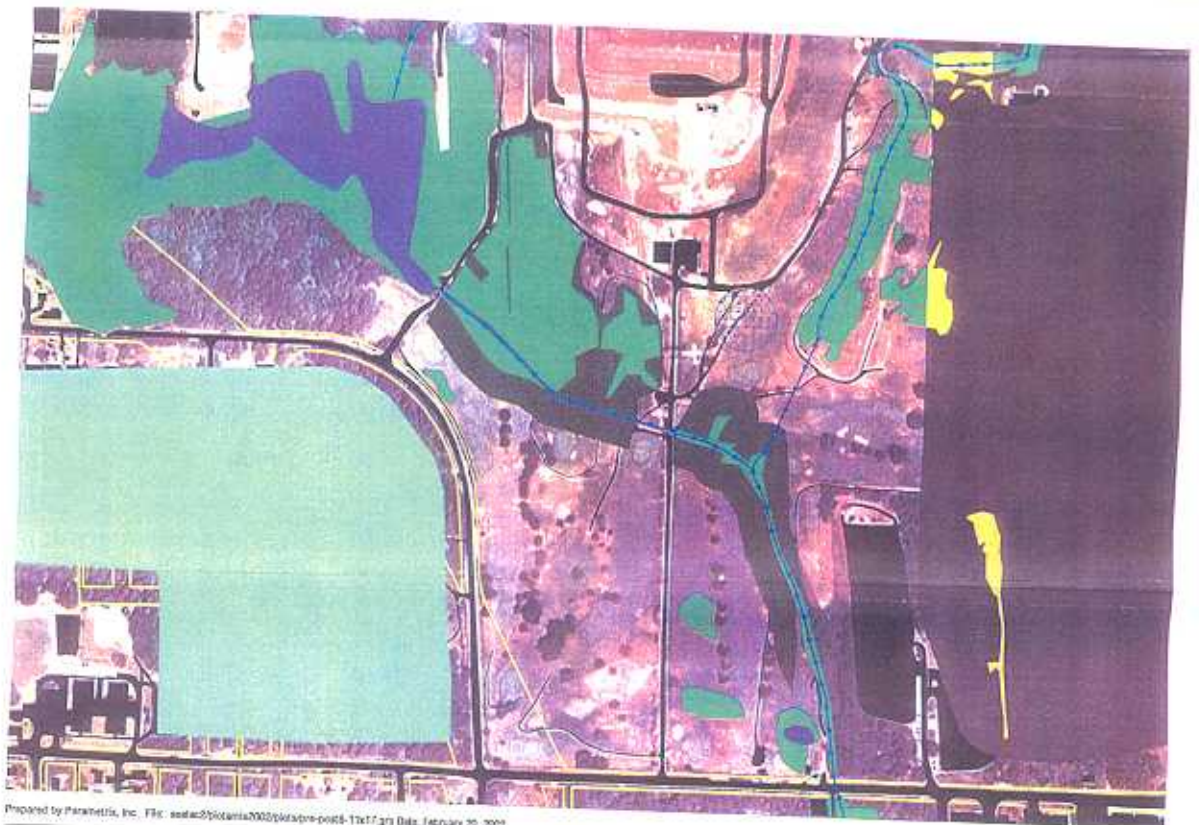
Prepared by Paralanik, Inc. File: astate250\carrs2005\proj\shre-ood5-11x17.gis Date: February 20, 2002

AR 053456



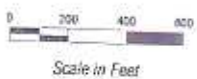
- | | |
|---------------------------------|-------------------------|
| Impervious Surfaces | Stormwater Vault |
| Wetlands | Airport Navigation Aids |
| Impacted Wetlands | Permanent Impact Areas |
| Stormwater Detention Facilities | Parcel Boundary |
| Mitigation Area Buffer | Permanent Impact Line |
| | USC Vial |
| | Miller Creek |

Sheet 3 of 8
Existing (Top)
and Post Project
Conditions (Bottom)



Prepared by Parametrix, Inc. File: c:\data\25\oklahoma\2002\okrapro-pro\04-11x17.grf Date: February 20, 2002

AR 053459



- Impervious Surfaces
- Wetlands
- Impacted Wetlands
- Mitigation Area Buffers
- Stormwater Vents
- Borrow Areas
- Remnant Impervious Areas
- Water Features
- Project Boundary
- Old Malheur Creek

Sheet 6 of 8
Existing (Top)
and Post Project
Conditions (Bottom)

