

Ace Airport View
 1/28/01
 DM1 - Mountain Station
 location when DeHorns
 Creek play lefts. Steep
 sided. SW drain nearby
 SDS 1 - Outfall for SW
 Associated wetlands
 Steep sided bank
 Wet → Oil boom present
 in creek 2
 Water Turbid
 Black stones
 Water from outfall significantly
 more turbid than creek water
 11:45 AM. Dr. Strand took
 samples.

AZOUS
 EXHIBIT NO. 386
 2-19-02
 M. Green

SDS SW outfall installation
is gone.

SW pond adjacent to canal
drainage from creek

Water drain to grated outlet
at tail pond. Basin
separates SW pond from
Tails

No photos yet.

* For Commit letter
 Embankment Flow
 + 50% - horse attention
 for discharge location
 for flow
 clogging of material

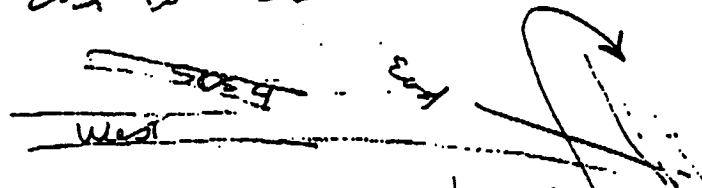
Dolans creek - SW
the Mentoring Site.

Below confluence.

East? West Confluence

Two outfalls - Northern
no scum - West Branch
SOS 411 - four at top

East Branch



Wolf Loney Prairie (with)
dark stream

Other two branches on clean
looking

Dear Tels in Golf Course
hay of land suggest more
worked originally

NW Ponds - Nice waterfall
pellet - Open water, Fringe
emergent, scrub scrub

SW pond adjacent to
 Tree Pond
 Bird Nests on pond

Tree Pond - on stream
 Associated Wetland

SDS 2 or 7 ?
 Some confusion

Flows like creek but
 is SW flow from SEAR
 (Tributary to Des Moines?)

Wetland south of Renny
 debris piled in it.
 Many sites brown w/pest
 FWS A & B full of
 debris - Trees etc.

Keith says area flagged
 maybe larger than wetland
 actually exist.

Lagoons 1 & 2 Wetland
 field sites

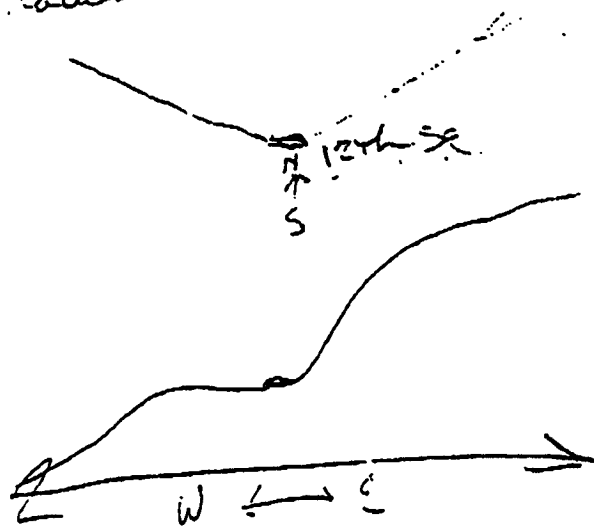
West side wetland

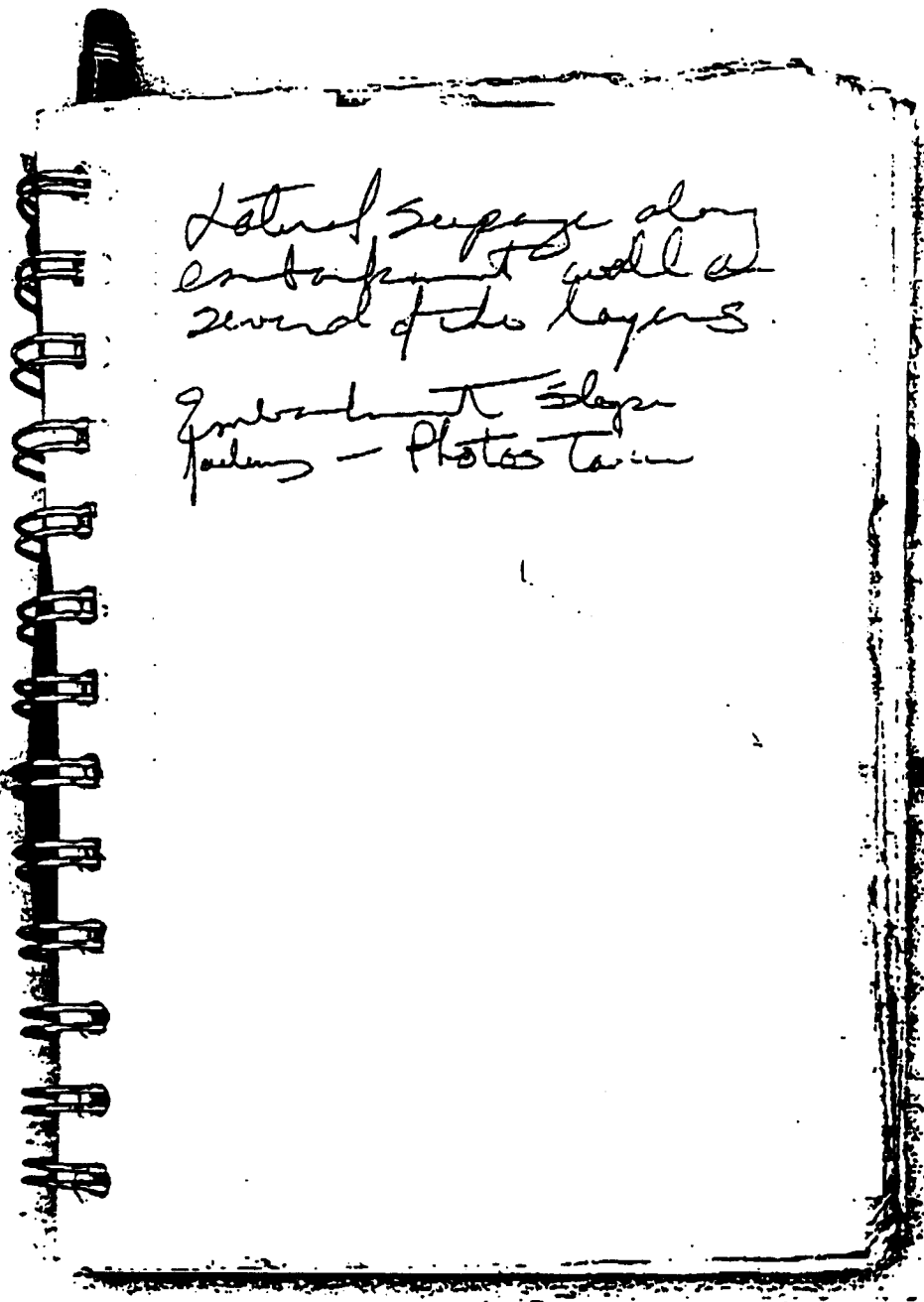
3 sups counted

1 sup - 2 culverts feed it

From south to north

Wetlands are part of a large
ravine



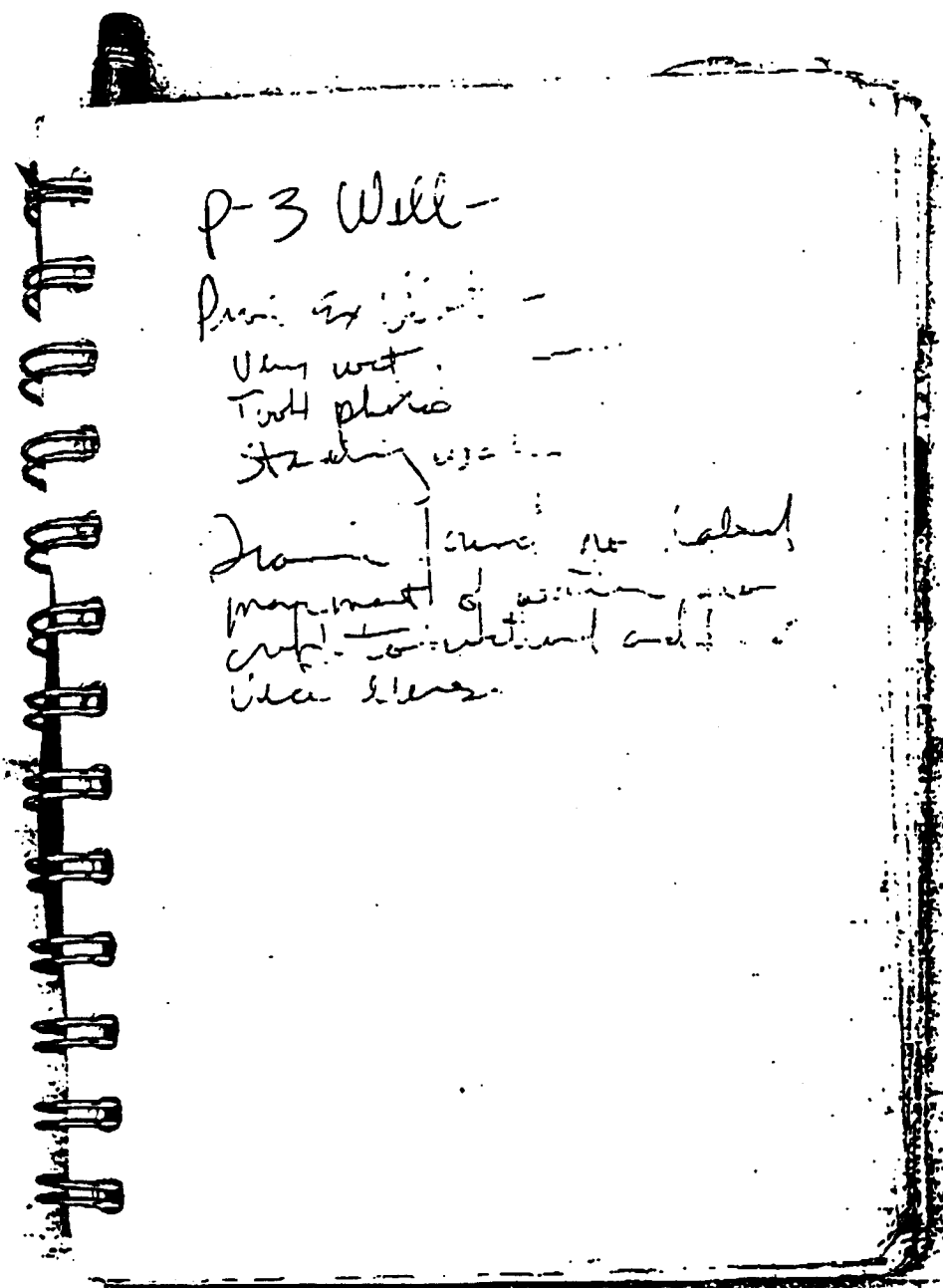


Lateral seepage along
embankment wall at
several of the layers.

Embankment slope
failures - photos taken

Presumably - uppermost part
of wetland. Slop present
down gradient.
Wetland #5. Forested

AR 053375



p-3 Well-

Prove in [unclear] -

Very wet

Took photo

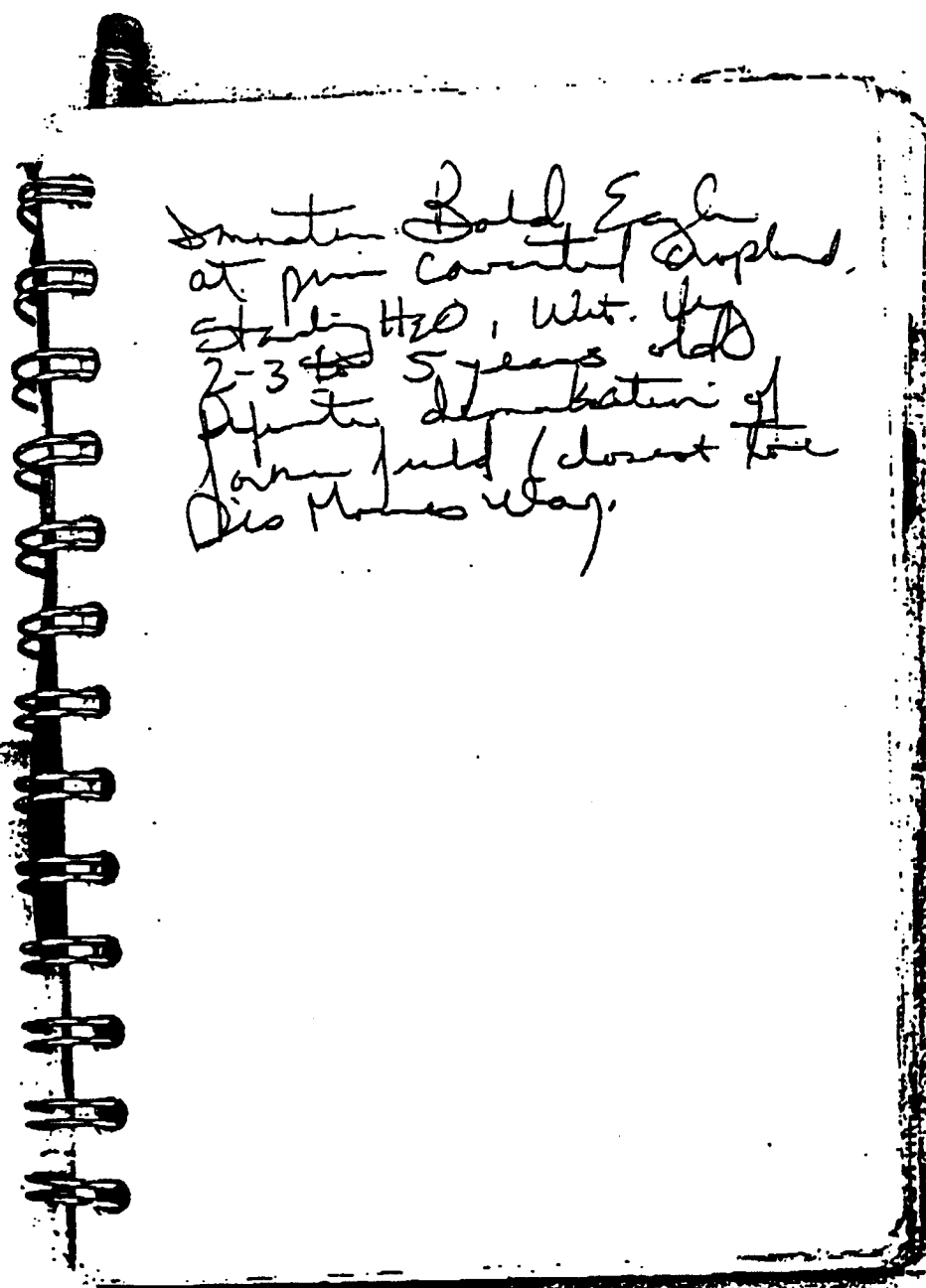
It's very [unclear]

From [unclear] no label

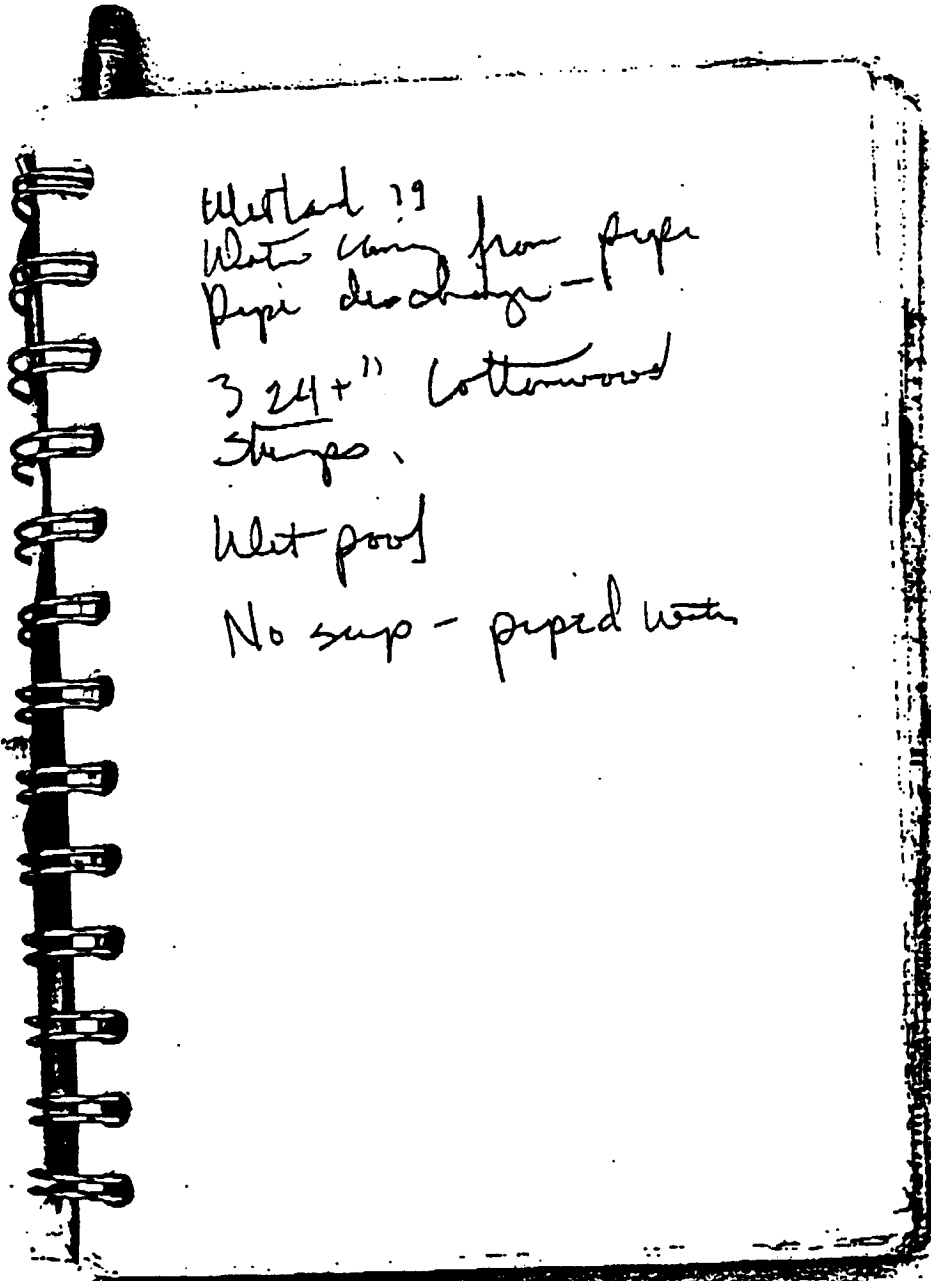
mapment of [unclear] area

copy to [unclear] address

idea [unclear]



Smarter Bald Eagle
at pin covered traps.
Study H2O, Wt. Yr
2-3 to 5 years old
Deputy demonstration of
John Field (closest to
Dis Mores Way.



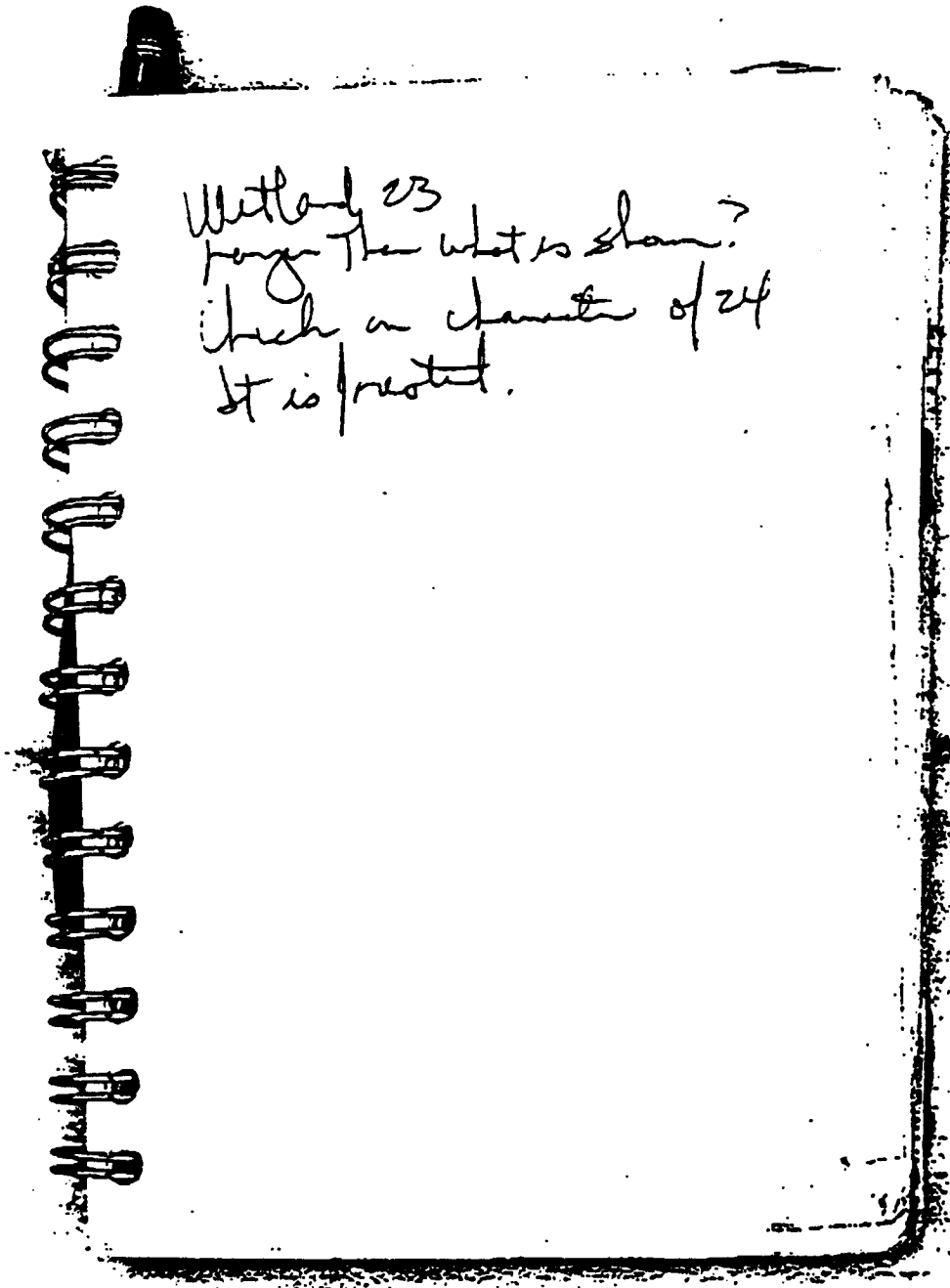
Method 19

Water coming from pipe
pipe discharge -

3 24" cottonwood
stumps.

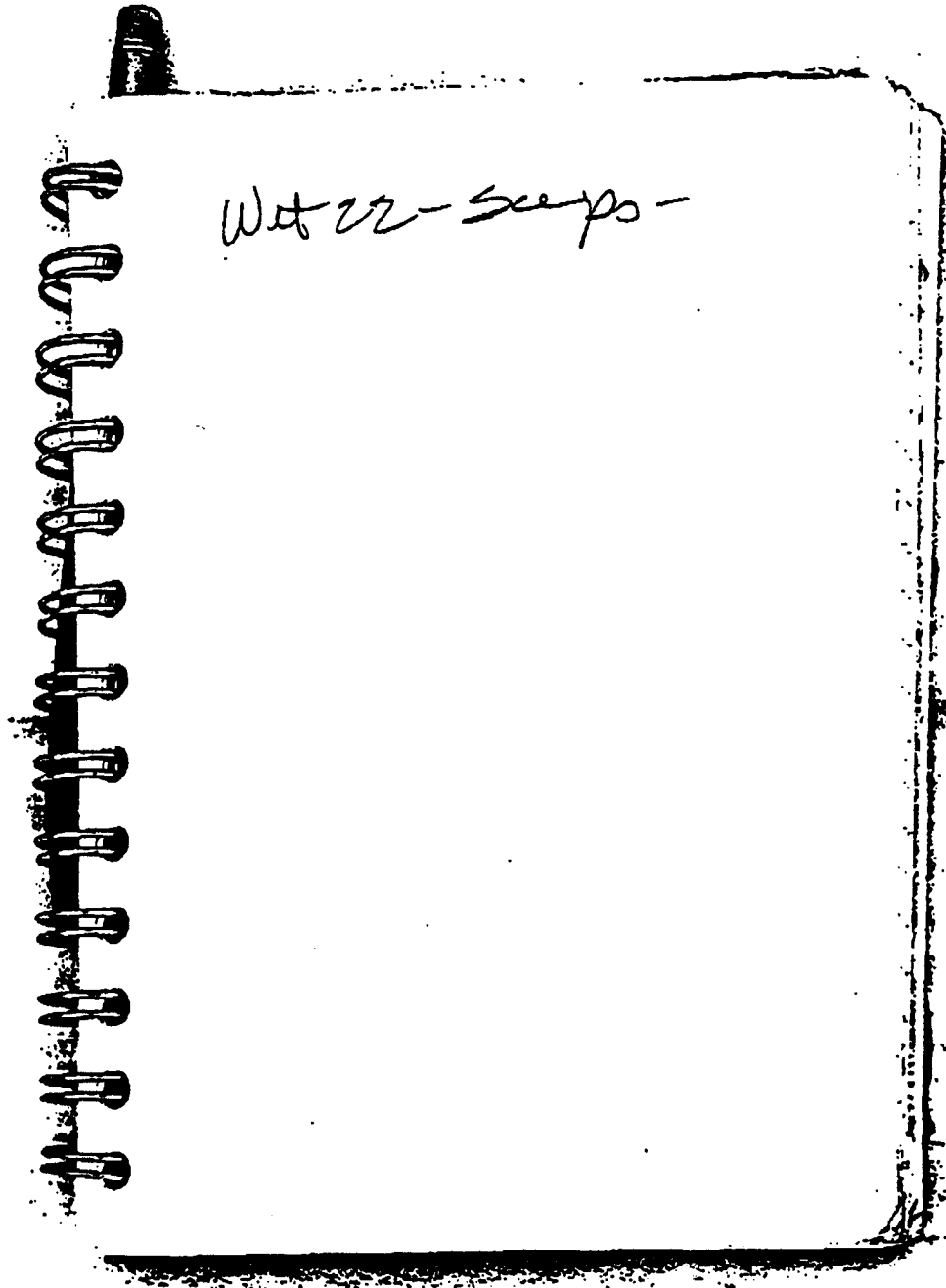
Wet pool

No sup - piped water



Wetland 23
page 1 then what is shown?
check on character of 24
it is protected.

Wetland 15¹ Forested wet
emergent.



AR 053381