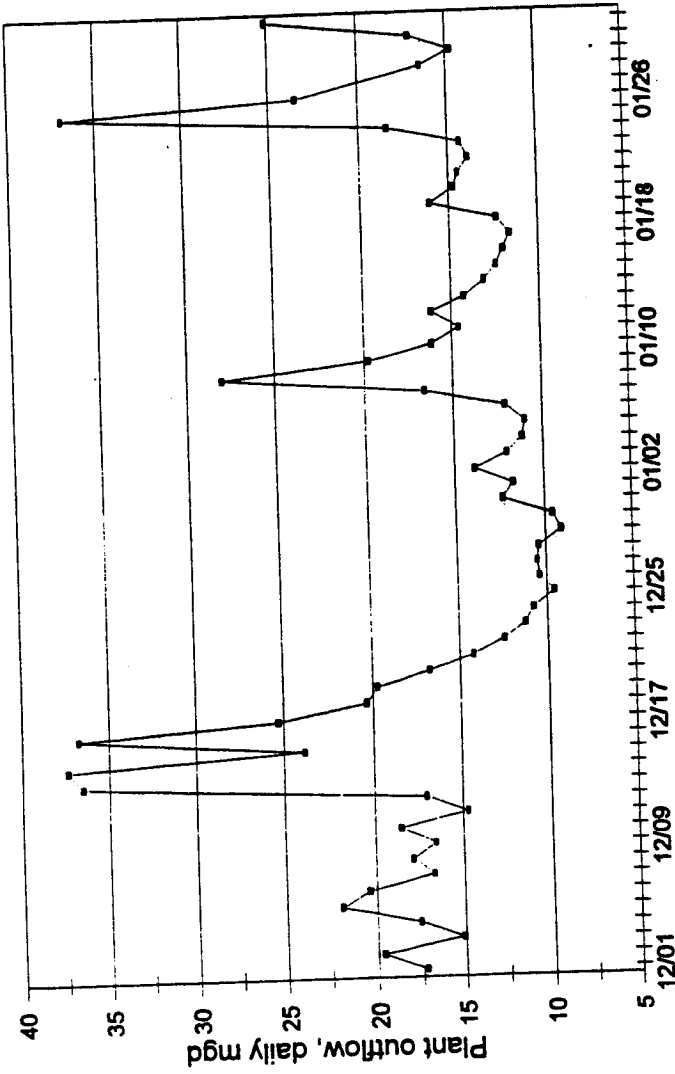


**City of Bellingham Wastewater Outflow**  
December 2001 - January 2002



Water Resources Consulting LLC

Figure 1. Outflow hydrograph of City of Bellingham Post Point wastewater treatment plant. Outflow figures include peak flow attenuation due to storage in the plant. Values are daily flows and do not show hourly variation.

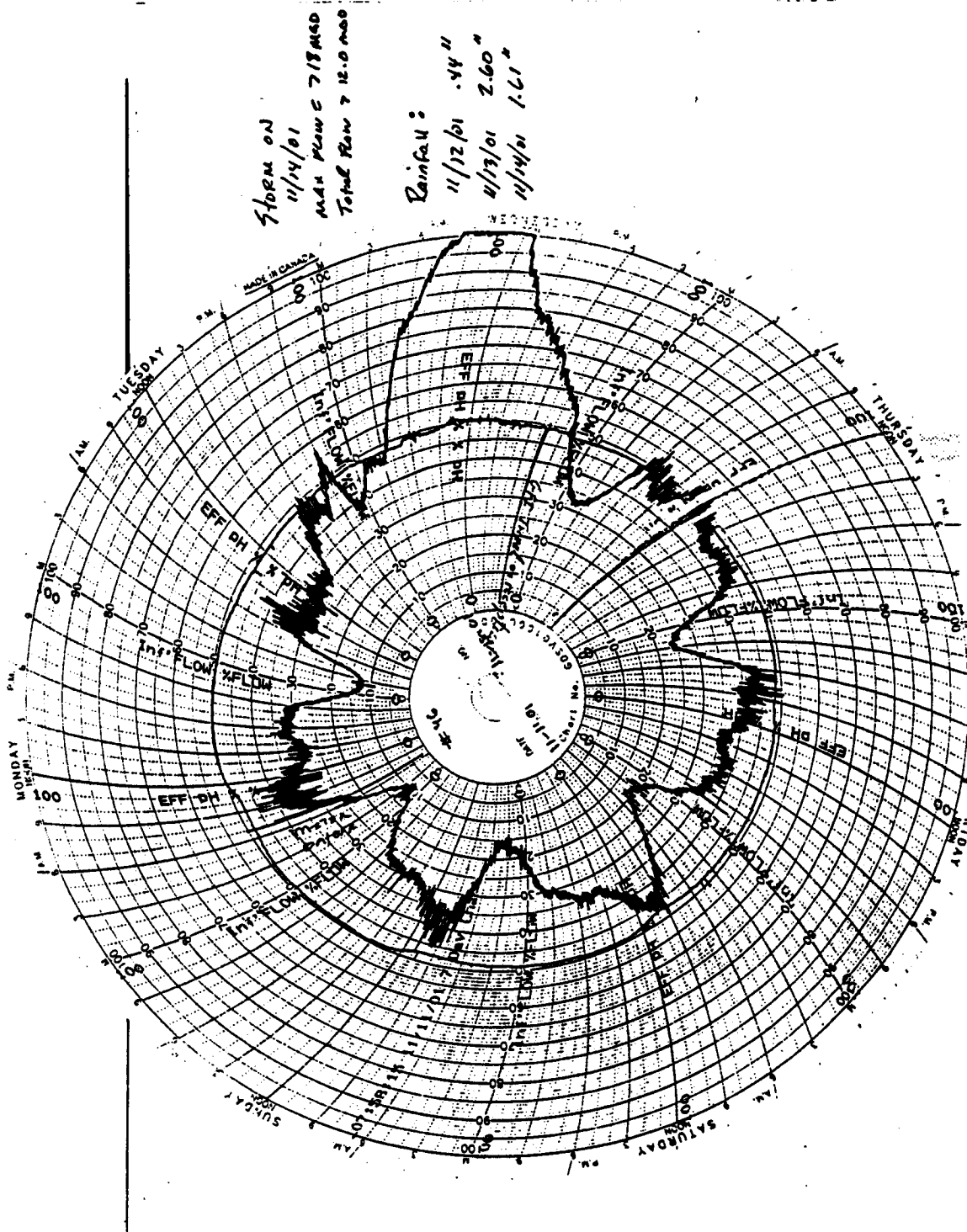


Figure 2. Flow recorder chart from Midway Sewer District treatment facility. Scale is percent of maximum hydraulic capacity (18 million gallons per day). Storm on November 14, 2001 resulted in a flow at the plant that increased from 8 to 18 mgd in 3 hours.