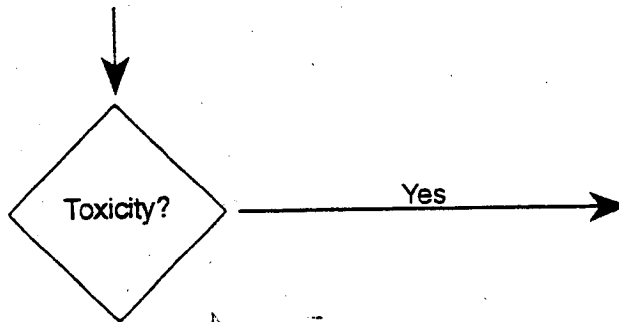


# Port of Seattle: Site-Specific Application of the Water Quality Standard

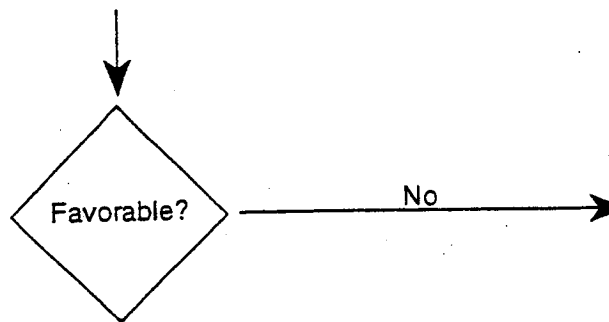
- Test outfall and receiving water, and mixture of the two
- Test organism: waterflea

WER Screening Toxicity Study



- Run bioassays on a range of copper concentrations
- No analytical chemistry
- Test organism: waterflea

WER Range Finding Study



WER Work Plan



- Range of copper concentrations
- Include analytical chemistry
- Test organism: waterflea and fathead minnow

WER Definitive Study

Conduct Translator Study?