



May 2020
Seattle-Tacoma International Airport Flight Corridor Safety Program



Hillgrove Cemetery Inventory

Prepared for Port of Seattle



May 2020

Seattle-Tacoma International Airport Flight Corridor Safety Program

Hillgrove Cemetery Inventory

Prepared for

Port of Seattle

P.O. Box 68727

Seattle, Washington 98168

Prepared by

Anchor QEA, LLC

1201 3rd Avenue, Suite 2600

Seattle, Washington 98101

TABLE OF CONTENTS

1	Introduction	1
1.1	Hillgrove Cemetery History	1
2	Burial Record Research.....	7
3	Field Data Collection	9
3.1	Methods.....	9
3.1.1	Project Boundary	9
3.1.2	Pedestrian Survey.....	9
3.1.3	Port of Seattle Ground Penetrating Radar Survey.....	10
4	Results.....	11
5	Conclusion	14
6	References	15

TABLE

Table 1	Evidence of Burials at Hillgrove Cemetery	11
---------	---	----

FIGURES

Figure 1	Hillgrove Cemetery Location.....	3
Figure 2	Historic and Modern Aerial Photographs of Hillgrove Cemetery	4
Figure 3	Historic Maps of the Hillgrove Cemetery Area	6
Figure 4	Dates of Earliest Monumented Interment Per Block.....	13

APPENDICES

Appendix A	Hillgrove Cemetery Inventory Tables
Appendix B	Hillgrove Cemetery Inventory Maps

1 Introduction

The Port of Seattle (Port) is implementing a Flight Corridor Safety Program to maintain navigable airspace at Seattle-Tacoma International Airport (SEA). The Flight Corridor Safety Program ensures compliance with the requirements of the Federal Aviation Administration for safe operation of aircraft during takeoff and landing at SEA by removing objects identified as flight safety obstructions.

The Port has identified multiple tree obstructions for removal under the Flight Corridor Safety Program, including several trees located within and immediately adjacent to Hillgrove Cemetery (King County Parcel 0422049025). As part of the removal process of trees in and near the cemetery, a new fence will be installed along the cemetery's northern boundary.

Hillgrove is a 1-acre cemetery located in the City of SeaTac along South 200th Street between 18th Avenue South and 15th Avenue South (Section 4 of Township 22 North, Range 4 East, Willamette Meridian). Hillgrove Cemetery was actively used for interments between about 1900 and 2011 (Figure 1). The cemetery is owned and managed by the Hillgrove Cemetery Association through its Board of Directors and affiliated with the Des Moines Historical Society.

As part of the coordination process with the Hillgrove Cemetery Association Board of Directors to remove the tree obstructions from the cemetery, the Port is preparing an inventory of the current features of the cemetery. The purpose of the inventory is to depict current conditions at Hillgrove Cemetery and develop a map that identifies the location of cemetery graves, headstones, and other features. The inventory effort included research, field work, and a ground penetrating radar (GPR) survey. This report describes the results of the cemetery inventory; a tabular listing of cemetery records and monuments is provided in Appendix A, with the associated schematic map provided in Appendix B. Geospatial data files are provided separately, which include information on subsurface conditions derived from the GPR survey data.

1.1 Hillgrove Cemetery History

The Hillgrove Cemetery parcel was originally part of a large property homesteaded in 1890 by Frederick Kindling, also sometimes spelled Friedrich (Bureau of Land Management Accession Number WASAA 071860). Kindling was born in Germany in 1845, reportedly immigrated to the United States in 1879 (Gavin 1979), and became a naturalized United States citizen in 1882 (NARA 1882). Kindling donated an acre of his property as a community cemetery, reportedly in 1900 (Gavin 1979). Friedrich Kindling died in 1919 and is buried in Hillgrove Cemetery.

Written online records show seven reported burials in the cemetery prior to 1900. Only two of the seven reported burials are represented by headstones in the cemetery (Jennie S. Y. Elsey Yeisley, 1865 to 1890, Block 4, Plot H; and John Sebastian Hyde, 1820 to 1899, Block 52, Plot D). The other

five may be reported in error, either in entering the date of death for individuals buried in Hillgrove Cemetery, or in misattributing burials at other cemeteries to Hillgrove Cemetery.

Leigh Elsey (George Leigh Elsey, born 1897), recalled during a 1979 interview watching his mother's coffin being transported to Hillgrove Cemetery "just after the clearing was completed" (Gavin 1979). There is a record of an Emma Elsey buried in 1900 at age 39, which is consistent with this recollection. It is possible that the two pre-1900 burials that have monuments in Hillgrove Cemetery were moved to the cemetery after its establishment, or that the cemetery was established around an existing burial on the Kindling homestead prior to donation and clearing of the whole acre.

The current fenced boundary of the cemetery is consistent with historic maps and photographs. The area within the current fenced boundary is almost exactly an acre, the size of Friedrich Kindling's original land donation. Historic aerial photographs show little change through the years (Figure 2). This indicates that Hillgrove Cemetery was not previously larger or in a different configuration. It is possible that burials could exist outside the fenced boundary, particularly if unapproved interment occurred at some time in the past (see Section 2).

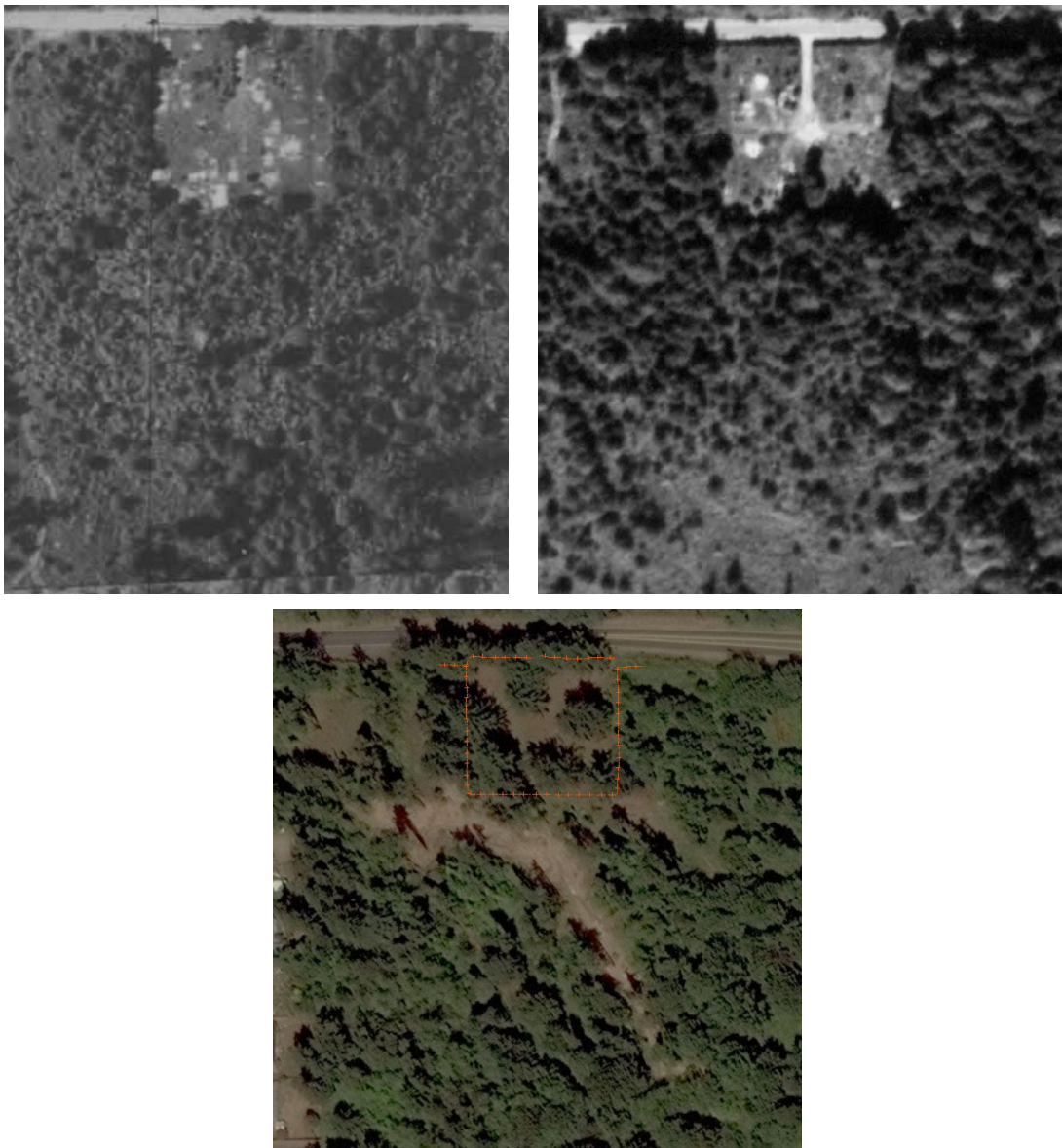


Publish Date: 2020/05/19, 3:09 PM | User: bbundy
Filepath: \\Orcas\gis\Jobs\PortofSeattle_0003\SD23_Reg_Memo_and_Implementation\Maps\Hillgrove_Cemetery\HillgroveCultural_Fig1_Vicinity.mxd



Figure 1
Project Vicinity
Hillgrove Cemetery Inventory

Figure 2
Historic and Modern Aerial Photographs of Hillgrove Cemetery



Top Left: 1937 Aerial Photograph. Top Right: 1954 Aerial Photograph. Bottom: 2020 Aerial Imagery with current fence location.
Source: King County Department of Transportation and Esri 2020

The cemetery appears to have served a very local community. It is not shown on maps in the first half of the twentieth century (Figure 3), though the nearby Washington Memorial Park (a larger, more formal cemetery) is shown on maps after its establishment in 1931.

Hillgrove Cemetery was designated a King County Community Landmark in 1982 but has since lost the designation. Hillgrove Cemetery has been determined not eligible for listing in the National

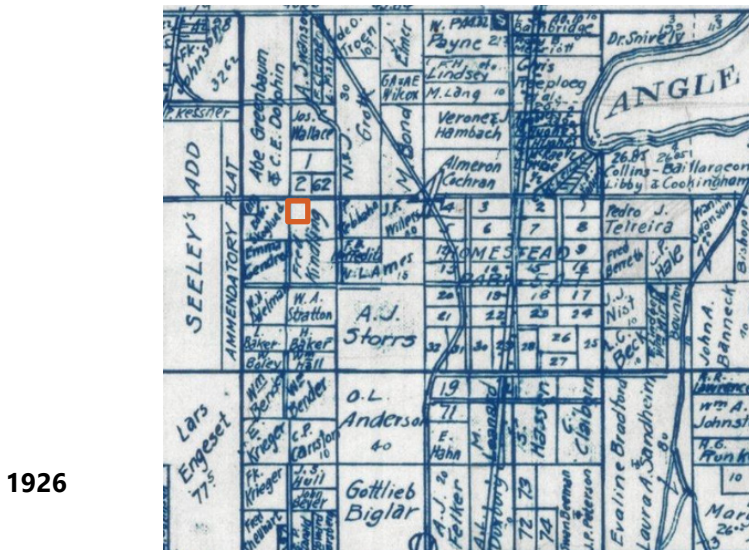
Register of Historic Places. When it was a listed King County Community Landmark, the cemetery was eligible for preservation grant funding through the 4Culture program. One such grant was secured in 1997 through a partnership with Highline High School and the Burien Heritage Society. The project was described as “a plan to restore, improve, and maintain the cemetery grounds, as well as to document burials and conduct research about the persons interred” (Filer and Roth 2009:6). The preservation project sign is still present at the cemetery, though the results of the research have not been located.

Figure 3
Historic Maps of the Hillgrove Cemetery Area



1907

Anderson Map Company Atlas
 Plate 13



1926

Kroll Map Company Atlas
 Plate 13



1936

Charles F. Metsker Atlas
 Plate 12

2 Burial Record Research

The most accurate physical record of interments (burials and interments of ashes) at Hillgrove Cemetery is the monuments on the property. The cemetery once kept records, but it is unclear where these records are now. Interments were reportedly recorded on a register that was kept on site in a “small, roofed shrine” that was removed at some time before 1979 (Gavin 1979).

Two organizations host lists of interments at Hillgrove Cemetery: Find a Grave (www.findagrave.com 2020) and USGenWeb Project (www.usgenweb.net 2020).

- The USGenWeb Project is a volunteer-run effort providing information for genealogists. Usgenweb.com has records of 216 individuals reported to be buried at Hillgrove Cemetery. The inventory is dated 2005 and may be the result of a visit to the cemetery around that time.
- Find a Grave is a commercial site that allows anyone with a login to upload photographs, descriptions, and other information about cemeteries and the monuments therein. Findagrave.com (2020) has records of 353 individuals reported to be buried at Hillgrove Cemetery. It is possible that these were uploaded by someone with access to the burial register that was once kept on site because it records many more names than there are visible monuments.

In general, the reliability of burial records for cemeteries becomes more challenging over time. As monuments deteriorate, printing becomes harder to read, leading to different variations of names (for example, “Marie” in one inventory might be “Maria” in another). There are also monuments with very similar names, so discerning whether two people are interred with only one readable monument remaining, or one interment is recorded with slightly different information in two different inventories, is a matter of judgment. In order to create individual records for the Hillgrove Cemetery inventory, the following approach was used when encountering two similar names in the burial records:

- If other information matched (dates of birth or death, epitaph), one record was created with the alternate name in parentheses.
- If more than one piece of information differed, two records were created.

This approach resulted in records of 377 named individuals listed as having been buried at Hillgrove Cemetery.

Hillgrove Cemetery appears to have been used primarily between 1900 and 1960. Anecdotal evidence indicates that some monuments at Hillgrove Cemetery may have been moved, and other interments likely no longer have their original monuments. A local community member told the *Seattle Post-Intelligencer* that a high school football team stole 11 monuments and deposited them at a rival high school in 1978; though they were eventually returned to the cemetery property, they

may not have been returned to the graves they originally marked (Gavin 1979). During field work at Hillgrove Cemetery, Anchor QEA staff spoke with Hillgrove Cemetery Association Board of Directors members who noted that some graves were once marked by wooden crosses, which have since deteriorated. Board members also showed field staff examples of flat monuments that have grown over with vegetation and are not visible from the surface. It is also possible that unmarked and unrecorded interments were made in the past with or without permission.

3 Field Data Collection

Data collection efforts supported the development of schematic and survey maps that identify the location of cemetery features and graves (Appendix B).

3.1 Methods

A pedestrian survey of Hillgrove Cemetery was completed by field staff from Anchor QEA during March 18 to 20, 2020. The GPR survey was completed by the Port during the weeks of March 16 and March 23, 2020.

3.1.1 Project Boundary

The boundary of the survey project was the current fenced extent of Hillgrove Cemetery. As noted in Section 1.1, the cemetery fenced extent is consistent with historical records, and shifts of more than a few feet in the fenceline are unlikely.

3.1.2 Pedestrian Survey

For the pedestrian survey, the following two methods were used to locate and identify cemetery features:

Global Positioning System (GPS) Unit

A handheld GPS unit was used to mark the location of cemetery features including the main driveway, walkways, benches, and the flagpole. The location of cemetery blocks was also recorded using the GPS unit. Field staff also used an undated photograph of a Hillgrove Cemetery map found on the findagrave.com website to support their efforts to locate visible features and monuments (Find a Grave 2020). This reference map is included within Appendix B.

Photography and Field Notes

After blocks were located, individual monuments were photographed and described in field notes. Descriptions include monument type, condition, decoration, and epitaph. Other burial-related features, such as raised concrete borders around plots or groups of plots, were also described in field notes.

The field team was able to correlate cemetery features with blocks identified on the photographed map (Appendix B) but assigned block sections in a manner that corresponded more closely to observed conditions. The field team assigned plot letters based on monument locations and avoided

Cemetery Inventory Features

Several cemetery features are included in the inventory and described as follows:

Block: A large portion of cemetery land; often marked by distinct block corners.

Section: A portion of cemetery land located within a block.

Monument: A marker used to identify and memorialize a burial site.

Plot: A single grave site, usually containing one burial.

Other Features: Includes trails, roadways, fences, benches, and other structural items as well as substantial natural features such as large trees.

duplicating plot letters within a block. For example, if three monuments identified in the east section of a block were assigned plot letters of A, B, and C, then three monuments in the west section would be plots D, E, and F. This system assumes that monuments are placed in the location of the interments they mark. It further assumes that when more than one individual is named on a monument, the interments correspond to the location of the names on the monument. For example, for a monument facing east with a husband's name on the south half of the monument and a wife's name on the north half of the monument, it was assumed that the husband was interred in the plot to the south, and the wife in the plot to the north.

Names and other details gleaned from monuments and written records from online sources were recorded in a spreadsheet. If gender was discernable, it was recorded (some early monuments had only initials, some first names were illegible, and infants appear to have often not been given a first name). Age at death was roughly calculated by subtracting birth year from death year, where those data were available. Table A-2 in Appendix A provides a listing of monumented plots by block and section.

3.1.3 Port of Seattle Ground Penetrating Radar Survey

The GPR survey was by the Port using a Radio Detection 1500 Enhanced (Ultra-Wide Band Antenna) GPR unit. GPR technology uses radar pulses to depict subsurface conditions and detect buried anomalies. Transects were organized north-to-south at a minimum 10-foot interval. The GPR unit identified subsurface anomalies that were marked by the survey crew with utility-marking paint as they were encountered; these coordinates were then collected using a survey-grade GPS unit.

Ground Penetrating Radar and Anomalies

Ground penetrating radar (GPR) is a noninvasive, tool that is used to map subsurface conditions in a wide variety of applications. GPR map changes in the underground profile due to contrasts in the electromagnetic conductivity across material interfaces, detecting subsurface voids and locating subsurface "anomalies" including buried objects.

GPR works by sending radar pulses into the ground that reflect back to the antenna. The antenna measures the speed and strength in which the signal returns. If there is an anomaly in the soil, the signal will return to the antenna at a different rate than the surrounding area.

4 Results

Burials at Hillgrove Cemetery are evidenced by written online records, monuments in the cemetery, and GPR anomalies (Table 1).

Table 1
Evidence of Burials at Hillgrove Cemetery

Source	Data	Data Points
Written online records	Online records of reported burials	377
Pedestrian survey	Field located grave monuments	224
GPR survey	GPR recorded anomalies	366

Notes: Written online records are from Find a Grave (www.findagrave.com 2020) and USGenWeb Project (www.usgenweb.net 2020).

Written Online Records: As noted in Section 2, a review of burial records resulted in 377 individuals reported to have been buried at Hillgrove Cemetery. Table A-1 in Appendix A provides a detailed listing of individuals and monuments identified from the burial record research and field data collection.

Pedestrian Survey: The March 2020 field visit found monuments naming 224 individuals at the cemetery, as well as another 22 monuments that were partially missing or unreadable. This is fewer than the number of interments listed in written online records (by 153 interments), and also fewer than the number indicated by GPR anomalies (by 143 interments). This is likely due to the disappearance of monuments, either through the decay of wooden monuments or vandalism.

GPR Survey: A total of 366 GPR anomalies were recorded, and they are listed by block in Table A-3 in Appendix A. The anomalies tend to occur in apparent rows, and most monuments have an adjacent anomaly. While it is possible that anomalies occur for reasons other than burials, they are generally organized in rows as would be expected for burials. There are fewer GPR anomalies than written online records of burials by 11 burials. It is possible that in some cases multiple people were buried together (presumably having died at the same time, as with mother and infant pairs) and register as one anomaly. It is also possible that some urns of cremated remains buried in the urn gardens (or elsewhere) are too small to register as anomalies.

Results Summary. The results of research into written online records, pedestrian survey, and GPR survey indicate a generally orderly scheme of interments at Hillgrove Cemetery, though many monuments have decayed (wood) or have been broken or removed (cement or stone). The average coffin is approximately 84 by 28 inches in exterior dimensions. Assuming a plot includes a foot of space in all directions between burials, a burial would take up around 27 square feet. A 1-acre property is 43,560 square feet and, depending on its shape and the presence of other features, could

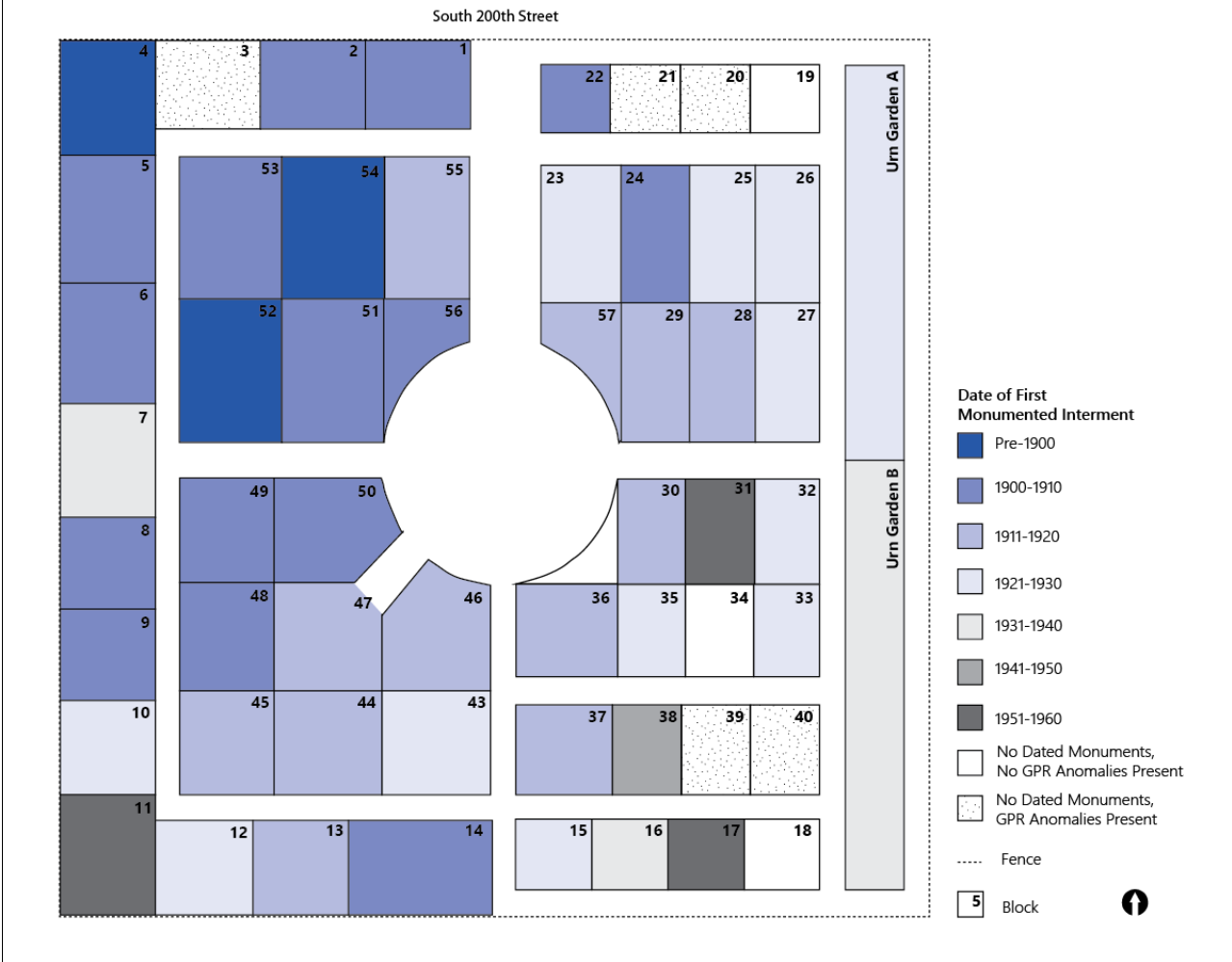
contain up to around 1,600 burials. Therefore, the reported number of burials is consistent with the size and appearance of the property.

The progression of spatial use of the cemetery can be estimated by noting the date of the earliest known burial in each block (Figure 4). This shows a pattern of use generally beginning earliest in the northwest and moving south and east through the first half of the twentieth century. Given that earlier graves are most likely to have been marked with wooden monuments, unmarked graves would be predicted to be present in the earlier-used blocks. In fact, the greater number of anomalies unconnected to existing monuments are in Blocks 4 (also the earliest used), 3, 23, and 31. The northwest corner also contains 7 of the 15 anomalies found in areas that are now footpaths. This indicates that there has been some shifting of block lines through time, especially in the earliest used parts of the cemetery.

The schematic map shown in Appendix B pieces together research and field conditions and should not assumed to be an accurate depiction of cemetery burial locations for a few reasons. First, the history of the cemetery indicates some monuments have been moved and some may not currently be in their original location. Second, some monuments record multiple family members, and it is a guess to assign each individual to a plot surrounding the family monument. Third, while it is assumed that interments are west of the monument in accordance with the Christian tradition of facing burials east with the monument at the head, that custom may not have been universally followed at Hillgrove Cemetery.

The tabular inventory in Appendix A and the corresponding schematic and survey maps in Appendix B represent a best estimation of interment locations.

Figure 4
Dates of Earliest Monumented Interment Per Block



5 Conclusion

The results discussed in this inventory will inform the Port's proposed tree removal and fence construction at Hillgrove Cemetery. Written online records of interments at Hillgrove Cemetery are fairly consistent with the results of pedestrian and GPR survey. Given the parcel's history, there is some remaining possibility that there are unmarked graves outside the limits of the GPR survey. The risk that unmarked graves are present outside the survey area is likely greatest in the northwest corner of the property, where the rock retaining wall was constructed, some of the earliest marked graves are found, and higher-than-average numbers of unmonumented anomalies are present.

The Port will coordinate with Washington State Department of Archaeology and Historic Preservation to develop a project approach to minimize the possibility of encountering human remains during tree removal and fence construction, as well as to comply with Revised Code of Washington 68.60.50 Protection of Historic Graves, in the event that remains are encountered. Future efforts by the Hillgrove Cemetery Association that include ground disturbance on or adjacent to cemetery ground would want to follow some basic guidelines:

- Minimize ground-disturbing activities.
- Use an Inadvertent Discovery Plan during construction or ground-disturbing activities to guide actions in the event that human remains are encountered; coordinate with Washington State Department of Archaeology and Historic Preservation to reinter the remains as required by Revised Code of Washington 68.60.50.
- Consider having a professional archaeologist on site to monitor ground disturbing activities.

6 References

- Filer, Patricia and Catherine Roth, 2009. *These Are Matters of Grave Importance: Cemetery Studies Curriculum Materials for Social Studies Classes*. Accessed April 2020. Available at: <https://historylink.org/Content/education/downloads/These%20are%20Matters%20of%20Grave%20Importance.pdf>
- Find a Grave, 2020. Hillgrove Cemetery. *Find a Grave*. Accessed April 2020. Available at: <http://www.findagrave.com>.
- Gavin, Lettie, 1979. An Old Cemetery is Dying of Neglect and Misuse. *Seattle Post-Intelligencer*, Sunday, June 24, 1979.
- NARA (National Archives and Records Administration), 1882. *Indexes to Naturalization Records of King County Territorial and Superior Courts, 1864-1889 and 1906-1928 (M1233)*. Microfilm Serial: M1233; Microfilm Roll: 1.
- USGenWeb Project, 2020. *The USGenWeb Project: Keeping Free Genealogy on the Internet*. Accessed April 2020. Available at: <http://www.usgenweb.net/>.

Appendix A

Hillgrove Cemetery Inventory Tables

Table A-1. Online Burial Records and On-Site Observations

Table A-2. Monumented Plots by Block and Section

Table A-3. Monumented Plots and GPR Anomalies by Block

Table A-1
Online Burial Records and On-Site Observations

Last Name	First Name	Birth Year	Death Year	Approximate Age at Death	Sex	Observed on Site March 2020	Listed on USGENWEB (2005)	Listed on FindaGrave	Block	Section	Plot	Monument Status	Monument Type	Shape (If Upright)	Material	Inscription Front	Inscription Base	Symbol(s)	Condition
Eley	Bella	1868	1889	21	Female	No	Yes	Yes	Not Observed	Not Observed	Not Observed	Not Observed	N/A	N/A	N/A	N/A	N/A	N/A	N/A
Yeisley	Susan "Jennie" "Jane" Eley	1865	1890	25	Female	Yes	Yes	Yes	4	E	H	Individual	Monument	Vaulted Obelisk	Concrete	JENNIE S YEISLEY BORN JUNE 22, 1865 DIED NOV. 14, 1890 At Rest	N/A	Flowers	Good
Clark	David	1818	1891	73	Male	No	No	Yes	Not Observed	Not Observed	Not Observed	Not Observed	N/A	N/A	N/A	N/A	N/A	N/A	N/A
Clark	Margaret Jane Eley	1822	1892	70	Female	No	No	Yes	Not Observed	Not Observed	Not Observed	Not Observed	N/A	N/A	N/A	N/A	N/A	N/A	N/A
Massey	Thomas James	1854	1897	43	Male	No	No	Yes	Not Observed	Not Observed	Not Observed	Not Observed	N/A	N/A	N/A	N/A	N/A	N/A	N/A
Ellington	Ruby	1898	1898	0	Female	Yes	Yes	Yes	52	NW	D	Group	Flat	N/A	Marble	ELLINGTON RUBY MAR 7 1898 MAY 3 1898	N/A	N/A	Good
Hyde	John Sebastian	1820	1899	79	Male	Yes	Yes	Yes	54	SW	A	Individual	Flat	N/A	Marble	DR JOHN S HYDE SEPT 24, 1820 SEPT 20, 1899	N/A	N/A	Good
Eley	Emma	1861	1900	39	Female	No	No	Yes	Not Observed	Not Observed	Not Observed	Not Observed	N/A	N/A	N/A	N/A	N/A	N/A	N/A
Berg	Albertina	1856	1901	45	Female	No	No	Yes	Not Observed	Not Observed	Not Observed	Not Observed	N/A	N/A	N/A	N/A	N/A	N/A	N/A
Castle	Infant	Unknown	1901	Unknown	Unknown	No	No	Yes	Not Observed	Not Observed	Not Observed	Not Observed	N/A	N/A	N/A	N/A	N/A	N/A	N/A
Chestney	Infant	1901	1901	0	Unknown	Yes	Yes	Yes	5	NW	A	Individual	Flat	N/A	Concrete	INFANT OF MR AND MRS GEORGE CHESTNY DIED JAN 28 1901	N/A	N/A	Fair (faded)
Williams	Joseph A.	Unknown	1901	Unknown	Male	Yes	Yes	Yes	53	NW	B	Individual	Flat	N/A	Concrete	JOSEPH A WILLIAM DIED MAR 16 1901	N/A	N/A	Fair (Faded)
Labard	Ethel	Unknown	1902	Unknown	Female	No	No	Yes	Not Observed	Not Observed	Not Observed	Not Observed	N/A	N/A	N/A	N/A	N/A	N/A	N/A
Schnoor	Infant	Unknown	1902	Unknown	Unknown	No	No	n	Not Observed	Not Observed	Not Observed	Not Observed	N/A	N/A	N/A	N/A	N/A	N/A	N/A
Harrington	Mary Jane Chapman	1837	1903	66	Female	No	No	Yes	Not Observed	Not Observed	Not Observed	Not Observed	N/A	N/A	N/A	N/A	N/A	N/A	N/A
Young	Warren	1833	1903	70	Male	Yes	Yes	Yes	52	SW	A	Individual	Monument	Square Top	Concrete	WARREN YOUNG BORN JAN 2 1833 DIED MAY 5 1903	N/A	N/A	Poor. Caulk exposed, chipped.
Hyde	Lucy Ann	1818	1904	86	Female	Yes	Yes	Yes	54	SW	B	Individual	Flat	N/A	Marble	LUCY ANN HYDE JAN 20, 1818 MAR 21, 1904	N/A	N/A	Good
Peck	Infant	Unknown	1904	Unknown	Unknown	No		Yes	Not Observed	Not Observed	Not Observed	Not Observed	N/A	N/A	N/A	N/A	N/A	N/A	N/A
Johnson	Charles V	1886	1905	19	Male	No	No	Yes	Not Observed	Not Observed	Not Observed	Not Observed	N/A	N/A	N/A	N/A	N/A	N/A	N/A
Johnson	Esther Hannah	1872	1905	33	Female	Yes	Yes	Yes	6	SE	E	Individual	Flat	N/A	Marble	AT REST H. ESTHER JOHNSON 1872 - 1905 WIFE AND MOTHER	N/A	Flowers	Good

Table A-1
Online Burial Records and On-Site Observations

Last Name	First Name	Birth Year	Death Year	Approximate Age at Death	Sex	Observed on Site March 2020	Listed on USGENWEB (2005)	Listed on FindaGrave	Block	Section	Plot	Monument Status	Monument Type	Shape (If Upright)	Material	Inscription Front	Inscription Base	Symbol(s)	Condition
Markwell	Luther Thomas	1864	1905	41	Male	Yes	Yes	Yes	56	E	H	Individual	Monument	Vaulted Obelisk	Concrete	LUTHER T MARKWELL BORN FEB 27 1864 DIED SEPT 5 1905 Rest father rest in quiet sleep while friends in sorrow o'or thee weep	MARKWELL	N/A	Fair. Faded. Some caulk (from repair?)
Markwell	Wendell Rawls	1905	1905	0	Male	Yes	No	Yes	56	W	B	Individual	Flat	N/A	Concrete	WENDELL RAWLS MARKWELL MAR 13 1905 APR 4 1905 Budded on Earth to bloom in Heaven.	N/A	N/A	Fair. Faded with some discoloration
Martin	Kenneth	1897	1905	8	Male	Yes	Yes	Yes	49	W	C	Individual	Monument	Square Top	Concrete	KENNETH 1897 - 1905	N/A	N/A	N/A
McLellan	Mary Ellen Grinold	1853	1905	52	Female	Yes	Yes	Yes	51	W	B	Individual	Flat	N/A	Concrete	MRS MARY E McLELLAN DIED APRIL 30 1905 AGE 53 YEARS	N/A	N/A	Fair. Faded.
Schnoor	Infant	Unknown	1905	Unknown	Unknown	Yes	No		53	SW	A	Individual	Flat	N/A	Concrete	INFANT OF MR CHARLES SCHNOOR DIED FEB 16 1905	N/A	N/A	Poor (Illegible from fading)
Seiler	Katherine	1850	1905	55	Female	No	No	Yes	Not Observed	Not Observed	Not Observed	Not Observed	N/A	N/A	N/A	N/A	N/A	N/A	N/A
Clayton	Rachel A. Meredith	1841	1906	65	Female	Yes	Yes	Yes	1	NE	E	Group	Monument	Vaulted Obelisk	Concrete	(side 1) RACHEL A Wife of F. C. CLAYTON Died May 22 1906 Aged 65 years Rest mother rest in heaven while friends in sorrow o'er thee weep We loved her much We love her still	CLAYTON	N/A	Good
McKail	George W	Unknown	1906	Unknown	Male	No	No	Yes	Not Observed	Not Observed	Not Observed	Not Observed	N/A	N/A	N/A	N/A	N/A	N/A	N/A
Reeploeg	Helen	Unknown	1906	Unknown	Female	No	Yes	Yes	Not Observed	Not Observed	Not Observed	Not Observed	N/A	N/A	N/A	N/A	N/A	N/A	N/A
Reeploeg	Infant	1906	1906	0	Unknown	Yes	Yes	Yes	8	NE	E	Individual	Flat	N/A	Concrete	INFANT REEPLOEG DIED FEB 7 1906	N/A	N/A	Good
Shom	Infant	Unknown	1906	Unknown	Unknown	No	No	Yes	Not Observed	Not Observed	Not Observed	Not Observed	N/A	N/A	N/A	N/A	N/A	N/A	N/A
Washburn	Infant	1906	1906	0	Unknown	Yes	Yes	Yes	9	NW	A	Individual	Flat	N/A	Concrete	INFANT OF MR AND MRS ? WASHBURN DIED MAR 19 1906	N/A	N/A	Fair (Faded)
Berg	Ole	Unknown	1907	Unknown	Male	No	No	Yes	Not Observed	Not Observed	Not Observed	Not Observed	N/A	N/A	N/A	N/A	N/A	N/A	N/A

Table A-1
Online Burial Records and On-Site Observations

Last Name	First Name	Birth Year	Death Year	Approximate Age at Death	Sex	Observed on Site March 2020	Listed on USGENWEB (2005)	Listed on FindaGrave	Block	Section	Plot	Monument Status	Monument Type	Shape (If Upright)	Material	Inscription Front	Inscription Base	Symbol(s)	Condition
Clark	William Symington	1852	1907	55	Male	No	No	Yes	Not Observed	Not Observed	Not Observed	Not Observed	N/A	N/A	N/A	N/A	N/A	N/A	N/A
Clayton	Edward Frederick	Unknown	1907	Unknown	Male	Yes	No	Yes	1	SE	B	Individual	Flat	N/A	Concrete	EDWARD FREDRICK DIED APRIL -- 1907	N/A	N/A	Poor (Illegible from fading)
Galloway	Violet Irene	1906	1907	1	Unknown	Yes	Yes	Yes	9	NE	C	Individual	Monument	Half Round	Concrete	(right half of face - broken) --T. IRENE --LLOWAY --31, 1906 --8, 1907 --ed on Earth --in Heaven	N/A	N/A	Poor. Monument is broken in half. Only the right half remains. Base is in good condition.
Rawls	Emmett Grayson (Grason)	1883	1907	24	Male	Yes	Yes	Yes	56	W	D	Individual	Monument	Square Top	Concrete	EMMETT GRASON 1883 - 1907 To forget is a vain endeavor love's remembrance lasts forever.	RAWLS	N/A	Fair. Faded
Rawls	Wendell	Unknown	1907	Unknown	Male	No	No	Yes	Not Observed	Not Observed	Not Observed	Not Observed	N/A	N/A	N/A	N/A	N/A	N/A	N/A
Silvey	Clarence G.	1890	1907	17	Male	Yes	Yes	Yes	2	E	E	Individual	Monument	Square Top (no base)	Concrete	CLARENCE G. SILVEY NOV 11, 1890 DEC 22, 1907	CLARENCE G.	N/A	Fair (some chips on headstone)
Silvey	Granville Roy	1888	1907	19	Male	Yes	Yes	Yes	2	E	D	Individual	Monument	Square Top (no base)	Concrete	G. ROY SILVEY MAY 17, 1888 AUG 15, 1907 None knew thee but to love thee.	G. ROY	N/A	Fair (some chips on headstone)
Smith	J.E.	Unknown	1907	Unknown	Unknown	No	No	Yes	Not Observed	Not Observed	Not Observed	Not Observed	N/A	N/A	N/A	N/A	N/A	N/A	N/A
Burto	Infant	Unknown	1908	Unknown	Unknown	No	No	Yes	Not Observed	Not Observed	Not Observed	Not Observed	N/A	N/A	N/A	N/A	N/A	N/A	N/A
Campbell	Lucille	Unknown	1908	Unknown	Female	No	No	Yes	Not Observed	Not Observed	Not Observed	Not Observed	N/A	N/A	N/A	N/A	N/A	N/A	N/A
Clayton?	Unknown	Unknown	1908	Unknown	Female	Yes	N/A	N/A	1	SW	A	Individual	Flat	N/A	Concrete	-- RY JANE -- TON DIED SEPT -- 1908	N/A	N/A	Poor (broken in half)
Dewey	Ann	Unknown	1908	Unknown	Female	No		Yes	Not Observed	Not Observed	Not Observed	Not Observed	N/A	N/A	N/A	N/A	N/A	N/A	N/A
Elsy	Ernest M. (Earnest, mislabeled as Carerest)	1890	1908	18	Male	Yes	Yes	Yes	4	W	B	Individual	Flat	N/A	Concrete	ERNEST M. ELSEY DIED MARCH 4 1908 AGE 18 YEARS	N/A	N/A	Fair (Faded)
Gassil	Ann M.	1833	1908	75	Female	No	No	Yes	Not Observed	Not Observed	Not Observed	Not Observed	N/A	N/A	N/A	N/A	N/A	N/A	N/A
Hammack	John H	Unknown	1908	Unknown	Male	No	No	Yes	Not Observed	Not Observed	Not Observed	Not Observed	N/A	N/A	N/A	N/A	N/A	N/A	N/A
Osborn	Infant	Unknown	1908	Unknown	Unknown	No	No	Yes	Not Observed	Not Observed	Not Observed	Not Observed	N/A	N/A	N/A	N/A	N/A	N/A	N/A
Unknown	Ann M	1833	1908	75	Female	Yes	Yes	N/A	22	E	E	Individual	Flat	N/A	Marble	ANN M 1833 - 1908	N/A	N/A	Good

Table A-1
Online Burial Records and On-Site Observations

Last Name	First Name	Birth Year	Death Year	Approximate Age at Death	Sex	Observed on Site March 2020	Listed on USGENWEB (2005)	Listed on FindaGrave	Block	Section	Plot	Monument Status	Monument Type	Shape (If Upright)	Material	Inscription Front	Inscription Base	Symbol(s)	Condition
Ferguson	Elizabeth	Unknown	1909	Unknown	Female	No	No	Yes	Not Observed	Not Observed	Not Observed	Not Observed	N/A	N/A	N/A	N/A	N/A	N/A	N/A
Ferguson	Lucindi Hudson	Unknown	1909	Unknown	Female	No	Yes	Yes	Not Observed	Not Observed	Not Observed	Not Observed	N/A	N/A	N/A	N/A	N/A	N/A	N/A
Hayes	Infant	1909	1909	0	Unknown	No	No	Yes	Not Observed	Not Observed	Not Observed	Not Observed	N/A	N/A	N/A	N/A	N/A	N/A	N/A
Jones	Infant	1909	1909	0	Unknown	Yes	Yes	Yes	56	E	F	Individual	Flat	N/A	Concrete	INFANT OF MR AND MRS O JONES DIED OCT 17 1909	N/A	N/A	Fair. Faded.
Jones	Myrtle	Unknown	1909	Unknown	Female	Yes	Yes	Yes	56	E	G	Individual	Flat		Concrete	MYRTLE JONES DIED SEPT 12 1909	N/A	N/A	Fair. Chipped and faded.
Long	John Stewart	1822	1909	87	Male	Yes	Yes	Yes	22	W	A	Individual	Monument	Square Top	Concrete	JOHN LONG 1822 - 1909	N/A	N/A	Fair. Chipped.
Stephney	David L.	1854	1909	55	Male	Yes	Yes	Yes	14	NW	A	Individual	Monument	Oval Top, Ogee Shoulder	Concrete	DAVID L STEPHNEY AUG 3 1854 DEC 31 1909	STEPHNEY	Grapevine	Good
Vrooman	Sidney B.	1827	1909	82	Male	Yes	Yes	Yes	24	NE	H	Group	Monument	Standard Obelisk	Concrete	(side 1) CAPT SIDNEY B VROOMAN BORN JULY 10 1827 DIED DEC 2 1909	VROOMAN	Eagle and star civil war badge.	Good
Lang	John S.	Unknown	1910	Unknown	Male	No	No	Yes	Not Observed	Not Observed	Not Observed	Not Observed	N/A	N/A	N/A	N/A	N/A	N/A	N/A
Lien	Theo	1884	1910	26	Male	Yes	Yes	Yes	50	W	D	Individual	Monument	Square Top	Marble	THEO LIEN 1884 - 1910	N/A	N/A	Good
Martin	Leonard G.	1865	1910	45	Male	Yes	Yes	Yes	49	W	A	Individual	Monument	Square Top	Concrete	LEONARD G 1865 - 1910	N/A	N/A	Good
Osborn	George	Unknown	1910	Unknown	Male	No	No	Yes	Not Observed	Not Observed	Not Observed	Not Observed	N/A	N/A	N/A	N/A	N/A	N/A	N/A
Soholt	Lizzie	1889	1910	21	Female	Yes	Yes	Yes	48	NW	A	Individual	Monument	Square Top	Marble	LIZZIE SOHOLT 1889 - 1910	N/A	N/A	Good
Davis	A.C.	Unknown	1911	Unknown	Unknown	No	No	Yes	Not Observed	Not Observed	Not Observed	Not Observed	N/A	N/A	N/A	N/A	N/A	N/A	N/A
Eley	David S. (misabeled as Caren S.)	Unknown	1911	Unknown	Male	No	No	Yes	4	E	G	Individual	Flat	N/A	Concrete	HAVIER S. ELSEY DIED FEB 5 1911	N/A	N/A	Poor (Illegible from fading)
Haines	Isadore	1876	1911	35	Male	No	Yes	Yes	Not Observed	Not Observed	Not Observed	Not Observed	N/A	N/A	N/A	N/A	N/A	N/A	N/A
Lamb	Zada M.	1897	1911	14	Female	No	Yes	Yes	Not Observed	Not Observed	Not Observed	Not Observed	N/A	N/A	N/A	N/A	N/A	N/A	N/A
Markwell	James Grant	1868	1911	43	Male	Yes	Yes	Yes	56	W	A	Individual	Monument	Checked Top	Concrete	JAMES G 1868 - 1911	MARKWELL	Book	Good
Markwell	James Madison	Unknown	1911	Unknown	Male	Yes	Yes	Yes	55	SE	B	Individual	Flat	N/A	Concrete	JAMES M MARKWELL DIED DEC 10 1911	N/A	N/A	Poor. Chipped, faded.
Myers	Kate	1843	1911	68	Female	Yes	Yes	Yes	50	C	H	Individual	Monument	Square Top	Concrete	MRS KATE MYERS DIED JAN 15, 1911 AGED 68 Ys 4 Ms 13 Ds	N/A	N/A	Good

Table A-1
Online Burial Records and On-Site Observations

Last Name	First Name	Birth Year	Death Year	Approximate Age at Death	Sex	Observed on Site March 2020	Listed on USGENWEB (2005)	Listed on FindaGrave	Block	Section	Plot	Monument Status	Monument Type	Shape (If Upright)	Material	Inscription Front	Inscription Base	Symbol(s)	Condition
Powell	Cella	Unknown	1911	Unknown	Female	No	Yes	Yes	Not Observed	Not Observed	Not Observed	Not Observed	N/A	N/A	N/A	N/A	N/A	N/A	N/A
Abbott	Bessie V. Clayton	1883	1912	r	Female	Yes	Yes	Yes	55	SE	D	Individual	Monument	Square Top	Concrete	BESSIE V Wife of J.C. ABBOTT BORN AUG 18 1883 DIED APR 2 1912	ABBOTT	N/A	Poor. Base and face are separated. Monument leaning on base - assuming a match.
Abbott	Infant	1912	1912	0	Unknown	No	No	Yes	Not Observed	Not Observed	Not Observed	Not Observed	N/A	N/A	N/A	N/A	N/A	N/A	N/A
Bartlett	George E.	1838	1912	74	Male	Yes	No	Yes	29	SE	E	Individual	Flat	N/A	Concrete	G.A.R. GEO. E. BARTLET 1838 - 1912	N/A	Dove, Fern	Fair. Cracked
Landers	Frederick	Unknown	1912	Unknown	Male	No	No	Yes	Not Observed	Not Observed	Not Observed	Not Observed	N/A	N/A	N/A	N/A	N/A	N/A	N/A
Smith	Evelyn Mary Moore	1878	1912	34	Female	No	No	Yes	Not Observed	Not Observed	Not Observed	Not Observed	N/A	N/A	N/A	N/A	N/A	N/A	N/A
Clayton	Shoalla	Unknown	1913	Unknown	Female	No	No	Yes	Not Observed	Not Observed	Not Observed	Not Observed	N/A	N/A	N/A	N/A	N/A	N/A	N/A
Dewey	John	Unknown	1913	Unknown	Male	No	Yes	Yes	Not Observed	Not Observed	Not Observed	Not Observed	N/A	N/A	N/A	N/A	N/A	N/A	N/A
Gassil	John M.	1833	1913	80	Male	No	No	Yes	Not Observed	Not Observed	Not Observed	Not Observed	N/A	N/A	N/A	N/A	N/A	N/A	N/A
Gassil	Phillip D.	1872	1913	41	Male	No	No	Yes	Not Observed	Not Observed	Not Observed	Not Observed	N/A	N/A	N/A	N/A	N/A	N/A	N/A
Gretz	William	Unknown	1913	Unknown	Male	No	No	Yes	Not Observed	Not Observed	Not Observed	Not Observed	N/A	N/A	N/A	N/A	N/A	N/A	N/A
Jennings	Rosa B.	1870	1913	43	Female	Yes	Yes	Yes	47	SW	C	Individual	Flat	N/A	Granite	ROSA B JENNINGS 1870 - 1913	N/A	N/A	Good
Leary	W.M.	Unknown	1913	Unknown	Unknown	No	No	Yes	Not Observed	Not Observed	Not Observed	Not Observed	N/A	N/A	N/A	N/A	N/A	N/A	N/A
McGee	Ruhama Hersman	1835	1913	78	Female	Yes	Yes	Yes	50	C	F	Individual	Monument	Square Top	Concrete	RUHAMA McGEE 1835 - 1913 (top of monument) McGEE	N/A	N/A	Fair. Chipped.
Smyth	Martha	Unknown	1913	Unknown	Female	No	No	Yes	Not Observed	Not Observed	Not Observed	Not Observed	N/A	N/A	N/A	N/A	N/A	N/A	N/A
Swift	Lewis P.	unknown	1913	Unknown	Male	Yes	Yes	Yes	8	SE	C	Individual	Flat	N/A	Concrete	LEWIS P SWIFT APRIL 20 1913	N/A	N/A	Poor (Illegible from fading)
Unknown	John M.	1838	1913	75	Male	Yes	Yes	N/A	22	E	F	Individual	Flat	N/A	Marble	JOHN M 1838 - 1913	N/A	N/A	Good
Abbott	James Claud	1884	1914	30	Male	Yes	Yes	Yes	55	NE	E	Individual	Monument	Square Top	Concrete	J.C. ABBOTT 1884 - 1914 Not my will, but thine be done Luke XXII.42	ABBOTT	N/A	Poor. Base and face are separated. Monument leaning on base - assuming a match.
Erickson	Wilmot H.	1912	1914	2	Male	Yes	yes	Yes	44	E	C	Individual	Flat	N/A	Concrete	WILMOT H ERICKSON 1912 - 1914	N/A	Ivy	Poor. Broken in 2 pieces.
McKeil	Ada Cummings	1882	1914	32	Female	No	No	Yes	Not Observed	Not Observed	Not Observed	Not Observed	N/A	N/A	N/A	N/A	N/A	N/A	N/A
Taplin	Eugene	1850	1914	64	Male	Yes	Yes	Yes	50	C	E	Individual	Monument	Square Top	Concrete	EUGENE TAPLIN 1850 - 1914	N/A	N/A	Good

Table A-1
Online Burial Records and On-Site Observations

Last Name	First Name	Birth Year	Death Year	Approximate Age at Death	Sex	Observed on Site March 2020	Listed on USGENWEB (2005)	Listed on FindaGrave	Block	Section	Plot	Monument Status	Monument Type	Shape (If Upright)	Material	Inscription Front	Inscription Base	Symbol(s)	Condition
Claiborn	Isaac S.	1846	1915	69	Male	Yes	Yes	Yes	29	NW	A	Group	Monument	Vaulted Obelisk	Concrete, Granite	(side 1) ISAAC S 1846 - 1915	CLAIBORN	Grapevine	Good
Ellington	Alva Leonard	1889	1915	26	Female	Yes	Yes	Yes	52	NW	C	Group	Flat	N/A	Marble	ELLINGTON (left) ALVA L 1889 - 1915 (right)	N/A	N/A	Good
Gillett	Edward Daniel	Unknown	1915	Unknown	Male	Yes	Yes	Yes	51	E	H	Individual	Flat	N/A	Concrete	EDWARD GILLET DIED JUNE 8 1915	N/A	N/A	Fair. Faded.
McLellan	Benjamin Franklin	1839	1915	76	Male	Yes	Yes	Yes	51	W	C	Individual	Flat	N/A	Concrete	BENJAMIN F MCLELLAN DIED NOV 6 1915 AGE 76 YEARS	N/A	N/A	Fair. Faded.
Rawls	Amanda Belle	1879	1915	36	Female	Yes	Yes	Yes	55	SE	C	Individual	Pillow	N/A	Concrete	AMANDA BELLE RAWLS FEB. 28 1879 FEB. 14 1915	N/A	N/A	Good
Wallace	William Donald	1898	1915	17	Male	No	No	Yes	Not Observed	Not Observed	Not Observed	Not Observed	N/A	N/A	N/A	N/A	N/A	N/A	N/A
Dunbar	Hattie M.	1867	1916	49	Female	Yes	Yes	Yes	46	NW	H	Individual and Group	Flat	N/A	Concrete	MOTHER AUG 12 1867 SEPT 29 1916	N/A	Flower	Good
Finnell	Franklin Perry "Frank"	1864	1916	52	Male	Yes	Yes	Yes	28	NW	D	Individual	Flat	N/A	Concrete	FRANK FINNELL BORN DEC 15 1864 DIED MAY 27 1916	N/A	N/A	Fair. Faded
Finnell	Nancy Chapman	1832	1916	84	Female	No	No	Yes	Not Observed	Not Observed	Not Observed	Not Observed	N/A	N/A	N/A	N/A	N/A	N/A	N/A
Larson	Ruby	Unknown	1916	Unknown	Female	No	No	Yes	Not Observed	Not Observed	Not Observed	Not Observed	N/A	N/A	N/A	N/A	N/A	N/A	N/A
May	Infant	Unknown	1916	Unknown	Unknown	No	No	Yes	Not Observed	Not Observed	Not Observed	Not Observed	N/A	N/A	N/A	N/A	N/A	N/A	N/A
Mitchen	Lester Marion	1886	1917	31	Male	No	No	Yes	Not Observed	Not Observed	Not Observed	Not Observed	N/A	N/A	N/A	N/A	N/A	N/A	N/A
Piggott	Raymond Edward John	Unknown	1917	Unknown	Male	No	No	Yes	Not Observed	Not Observed	Not Observed	Not Observed	N/A	N/A	N/A	N/A	N/A	N/A	N/A
St. John	Charles William	1855	1917	62	Unknown	Yes	Yes	Yes	53	NE	F	Individual	Pillow	N/A	Concrete	C.W. ST. JOHN OCT 9 1855 DEC 28 1917	N/A	N/A	Good
Wilson	Marie E.	1881	1917	36	Female	Yes	Yes	Yes	52	SE	E	Individual	Monument	Arc	Concrete	MARIE E The loving wife of JAMES L. WILSON JAN 30 1881 FEB 15 1917 Gone but not forgotton.	N/A	N/A	Good
Bennet	Samuel (or Samuel) Wilkes B.	Unknown	1918	Unknown	Male	Yes	Yes		9	SE	B	Individual	Flat	N/A	Concrete	SAMUEL BENNET DIED DEC 22 1918	N/A	N/A	Fair (Faded)
Cassil (Gassil? Casel?)	Philip Ward	Unknown	1918	Unknown	Male	Yes	Yes	Yes	22	W	N/A	Individual	Flat	N/A	Concrete	P.W. CASEL DIED JAN 12 1918	N/A	N/A	Fair. Faded

Table A-1
Online Burial Records and On-Site Observations

Last Name	First Name	Birth Year	Death Year	Approximate Age at Death	Sex	Observed on Site March 2020	Listed on USGENWEB (2005)	Listed on FindaGrave	Block	Section	Plot	Monument Status	Monument Type	Shape (If Upright)	Material	Inscription Front	Inscription Base	Symbol(s)	Condition
Clayton	Ida Alta	1881	1918	37	Female	Yes	Yes	Yes	1	NE	C	Individual	Monument	Vaulted Obelisk	Concrete	IDA A. Daughter of F. C. and RACHEL CLAYTON Died DEC 24 1918 AGE 37 YEARS 7 MONTHS 14 DAYS Blessed are the dead who die in the Lord	CLAYTON	Flowers	Good
Davis	Earl C.	Unknown	1918	Unknown	Male	No	No	Yes	Not Observed	Not Observed	Not Observed	Not Observed	N/A	N/A	N/A	N/A	N/A	N/A	N/A
Duxbury	Phillip J.	1907	1918	11	Male	Yes	No	Yes	57	E	B	Individual	Flat	N/A	Concrete	PHILLIP J BUXBURY DIED MAY -- 19--	N/A	N/A	Fair. Faded
Galloway	Renselaer Curtis	1847	1918	71	Unknown	Yes	Yes	Yes	9	NE	D	Individual	Flat	N/A	Concrete	R. C. GALLOWAY DIED JAN 26 1918	N/A	N/A	Fair (Faded)
Graham	Sarah McAllister	1839	1918	79	Female	Yes	Yes	Yes	5	NE	C	Group	Flat	N/A	Marble	(right) SARAH 1839 - 1918 (center) GRAHAM	N/A	N/A	Good
Jourdan	Louis	1862	1918	56	Male	Yes	Yes	Yes	30	E	D	Individual	Monument	Square Top	Marble	(top) FATHER (face) LOUIS JOURDAN 1862 - 1918 AT REST	N/A	N/A	Good
Massey	Thomas Logan	1885	1918	33	Male	Yes	No	Yes	28	NW	C	Individual	Flat	N/A	Concrete	THOMAS MASSEY DIED JAN 8 1918	N/A	N/A	Fair. Faded
Clayton	Franklin C.	1838	1919	81	Male	Yes	Yes	Yes	1	NE	D	Group	Monument	Vaulted Obelisk	Concrete	(Side 2) FRANKLIN C. CLAYTON Born APRIL 12 1838 Died APRIL 15 1919 Whosoever will let him take of the water of life freely	CLAYTON	N/A	Good
Esey	Baby	Unknown	1919	Unknown	Unknown	No		Yes	Not Observed	Not Observed	Not Observed	Not Observed	N/A	N/A	N/A	N/A	N/A	N/A	N/A
Kindling	Friedrich	1845	1919	74	Male	Yes	Yes	Yes	13	SW	A	Individual	Monument	Square Top	Granite	(top) KINDLING (face) FRIEDRICH KINDLING DIED MAY 6 1919 AGED 74 YEARS	N/A	Ivy	Good
Neal	Jean	1896	1919	23	Female	No	No	Yes	Not Observed	Not Observed	Not Observed	Not Observed	N/A	N/A	N/A	N/A	N/A	N/A	N/A
Smith	Harry	Unknown	1919	Unknown	Male	No	No	Yes	Not Observed	Not Observed	Not Observed	Not Observed	N/A	N/A	N/A	N/A	N/A	N/A	N/A

**Table A-1
Online Burial Records and On-Site Observations**

Last Name	First Name	Birth Year	Death Year	Approximate Age at Death	Sex	Observed on Site March 2020	Listed on USGENWEB (2005)	Listed on FindaGrave	Block	Section	Plot	Monument Status	Monument Type	Shape (If Upright)	Material	Inscription Front	Inscription Base	Symbol(s)	Condition
Campbell	Edwin A	1858	1920	62	Male	Yes	Yes	No	46	NE	K	Group	Flat	N/A	Cast Iron	CAPT EDWIN A CAMPBELL 1858 1920	N/A	N/A	N/A
Carmichael	Alexander J	1858	1920	62	Male	Yes	Yes	Yes	36	W	C	Individual	Monument	Square Top	Concrete	(top) FATHER (face) ALEXANDER J CARMICHAEL 1858 - 1920	N/A	Ivy	Good
Carmichael	Catherine	1868	1920	52	Female	Yes	Yes	Yes	36	W	D	Individual	Monument	Square Top (off base)	Concrete	(top) MOTHER (face) CATHERINE CARMICHAEL 1868 - 1920	N/A	Ivy	Poor. Separated from base, seems to have been removed.
Elsy	Nellie B. Paul	1883	1920	37	Female	Yes	Yes	Yes	37	NW	B	Group	Monument	Oval with Checks	Marble	ELSEY NELLIE B 1883 MOTHER 1920	N/A	Flowers	Good
McKeil	Bertha	Unknown	1920	Unknown	Female	Yes	No	Yes	46	SE	I	Individual	Flat	N/A	Concrete	BERTHA McKeil DIED DEC 28 1920	N/A	N/A	Fair, very faded.
McKeil	Infant	Unknown	1920	Unknown	Unknown	No	No	Yes	Not Observed	Not Observed	Not Observed	Not Observed	N/A	N/A	N/A	N/A	N/A	N/A	N/A
Peterson	Mathea Arneson	1836	1920	84	Female	Yes	Yes	Yes	45	E	B	Group	Monument	Arc	Marble, Concrete	PETERSON (left) MOTHER MATHEA 1836 - 1920	N/A	N/A	Good
Thrasher	John W.	Unknown	1920	Unknown	Male	No	No	Yes	Not Observed	Not Observed	Not Observed	Not Observed	N/A	N/A	N/A	N/A	N/A	N/A	N/A
Vrooman	Sarah Huff	1841	1920	79	Female	Yes	Yes	Yes	24	NE	G	Group	Monument	Standard Obelisk	Concrete	(side 2) At Rest SARAH HUFF VROOMAN WIFE OF CAPT S B VROOMAN BORN JAN 30 1841 DIED APR 18 1920	VROOMAN	Eagle and star civil war badge.	Good
Young	Lucretia Rice Wright	1836	1920	84	Female	Yes	Yes	Yes	6	SE	D	Individual	Flat	N/A	Concrete	LUCRETIA R. YOUNG DIED JUNE 21 1920 AGE 84	N/A	N/A	Fair (chips in headstone)
Clark	John B.	Unknown	1921	Unknown	Male	No	Yes	No	Not Observed	Not Observed	Not Observed	Not Observed	N/A	N/A	N/A	N/A	N/A	N/A	N/A
Jennings	Henry	1854	1921	67	Male	Yes	Yes	Yes	47	SW	A	Individual	Flat	N/A	Granite	HENRY JENNINGS 1854 - 1921	N/A	N/A	Good
Johnson	Nicholas	Unknown	1921	Unknown	Male	Yes	Yes	No	12	NW	F	Individual	Flat	N/A	Concrete	NICHOLAS JOHNSON DIED JAN 9 19--	N/A	N/A	Fair. Faded.

**Table A-1
Online Burial Records and On-Site Observations**

Last Name	First Name	Birth Year	Death Year	Approximate Age at Death	Sex	Observed on Site March 2020	Listed on USGENWEB (2005)	Listed on FindaGrave	Block	Section	Plot	Monument Status	Monument Type	Shape (If Upright)	Material	Inscription Front	Inscription Base	Symbol(s)	Condition
Johnson	Nickolas	1861	1921	60	Male	Yes	Yes	Yes	12	NW	E	Individual	Pillow	N/A	Marble, Concrete	NICKOLAS JOHNSON MAR 29 JAN 7 1861 1921	N/A	N/A	Good
Merchant	Lawrence W.	Unknown	1921	Unknown	Male	No	No	Yes	Not Observed	Not Observed	Not Observed	Not Observed	N/A	N/A	N/A	N/A	N/A	N/A	N/A
Peck	Joseph	1839	1921	82	Male	Yes	Yes	Yes	25	SW	B	Individual	Monument	Square Top	Concrete	FATHER JOSEPH PECK DIED JUNE 30 1921 AGED 82 YEARS	N/A	Illegible	Poor. Headstone separated from base.
Scanion	Thomas	Unknown	1921	Unknown	Male	No	No	Yes	Not Observed	Not Observed	Not Observed	Not Observed	N/A	N/A	N/A	N/A	N/A	N/A	N/A
Cooper	Franklin Griffith	1853	1922	69	Male	Yes	Yes	Yes	28	SE	E	Individual	Flat	N/A	Marble	FRANKLIN G COOPER 1853 - 1922	N/A	N/A	Good
Daul	Chester	Unknown	1922	Unknown	Male	No	Yes	Yes	Not Observed	Not Observed	Not Observed	Not Observed	N/A	N/A	N/A	N/A	N/A	N/A	N/A
Duxbury	Gordon	1915	1922	7	Male	Yes	No	Yes	57	E	D	Individual	Flat	N/A	Concrete	GORDON BUXBURY DIED NOVE. 13 1922	N/A	N/A	Fair. Faded
Logan	Frederick	Unknown	1922	Unknown	Male	No	No	Yes	Not Observed	Not Observed	Not Observed	Not Observed	N/A	N/A	N/A	N/A	N/A	N/A	N/A
Lovelock	Marie	Unknown	1922	Unknown	Female	No	No	Yes	Not Observed	Not Observed	Not Observed	Not Observed	N/A	N/A	N/A	N/A	N/A	N/A	N/A
Seiler	Rosa	Unknown	1922	Unknown	Female	No	Yes	Yes	Not Observed	Not Observed	Not Observed	Not Observed	N/A	N/A	N/A	N/A	N/A	N/A	N/A
Commons	Jasper Alexander	1843	1923	80	Male	Yes	Yes	Yes	23	SW	A	Individual	Monument	Square Top	Concrete	(top) HUSBAND (face) J.A. COMMONS 1843 - 1923 G.A.R.	N/A	Grapevine	Good. Chipped
Dewey	Alice G.	1851	1923	72	Female	No	No	Yes	Not Observed	Not Observed	Not Observed	Not Observed	N/A	N/A	N/A	N/A	N/A	N/A	N/A
Jakobsen	Hans H.	1867	1923	56	Male	Yes	Yes	Yes	43	SE	E	Group	Flat	N/A	Marble	JAKOBSEN (right) HANS H 1867 - 1923	N/A	N/A	Good
Smith	Hattie Augusta	Unknown	1923	Unknown	Female	No	No	Yes	Not Observed	Not Observed	Not Observed	Not Observed	N/A	N/A	N/A	N/A	N/A	N/A	N/A
Bisbee	Madelane	1859	1924	65	Female	Yes	Yes	Yes	36	W	B	Individual	Monument	Square Top	Concrete	(top) MOTHER (face) MADELANE Beloved wife of F.G. BISBEE 1859 - 1924	N/A	Ivy	Good
Goldtrip	Susanna Powell	1845	1924	79	Female	Yes	Yes	Yes	46	NE	L	Group	Flat	N/A	Cast Iron	SUSANNA GOLDTRIP 1845 1924	N/A	N/A	N/A
Pennington	Augusta M. Cousens	1848	1924	76	Female	Yes	Yes	Yes	50	W	B	Individual	Monument	Oval with Checks	Concrete	AUGUSTA PENNINGTON 1848 - 1924	N/A	N/A	Good
Price	James L	1846	1924	78	Male	No	No	Yes	Not Observed	Not Observed	Not Observed	Not Observed	N/A	N/A	N/A	N/A	N/A	N/A	N/A

Table A-1
Online Burial Records and On-Site Observations

Last Name	First Name	Birth Year	Death Year	Approximate Age at Death	Sex	Observed on Site March 2020	Listed on USGENWEB (2005)	Listed on FindaGrave	Block	Section	Plot	Monument Status	Monument Type	Shape (If Upright)	Material	Inscription Front	Inscription Base	Symbol(s)	Condition
Walker	Alexander	Unknown	1924	Unknown	Male	No	No	Yes	Not Observed	Not Observed	Not Observed	Not Observed	N/A	N/A	N/A	N/A	N/A	N/A	N/A
Durrwachter	Jacob	1838	1925	87	Male	No	No	Yes	Not Observed	Not Observed	Not Observed	Not Observed	N/A	N/A	N/A	N/A	N/A	N/A	N/A
East	Isabel	Unknown	1925	Unknown	Female	No	No	Yes	Not Observed	Not Observed	Not Observed	Not Observed	N/A	N/A	N/A	N/A	N/A	N/A	N/A
Goldschmidt	Anna	1860	1925	65	Female	Yes	Yes	Yes	12	NE	H	Group	Monument	Vaulted Obelisk	Concrete	(side 2) ANNA GOLDSCHMIDT NOV 17 1860 MAR 13 1925	GOLDSCHMIDT	Cross, grapevine	Good
Jourdan	Marie Durrwachter	1865	1925	60	Female	Yes	Yes	Yes	30	E	C	Individual	Monument	Square Top	Marble	(top) MOTHER (face) MARIE JOURDAN 1865 - 1925 AT REST	N/A	N/A	Good
Pennington	William Robert	1871	1925	54	Male	Yes	Yes	Yes	50	W	A	Individual	Monument	Oval with Checks	Concrete	Wm ROBERT PENNINGTON 1871 - 1925	N/A	Masonic Arms	Good
Walker	Janet	Unknown	1925	Unknown	Female	No	No	Yes	Not Observed	Not Observed	Not Observed	Not Observed	N/A	N/A	N/A	N/A	N/A	N/A	N/A
Bond	Mildred Veysey	1891	1926	35	Female	Yes	Yes	Yes	15	E	A	Individual	Monument	Arc	Marble, Concrete	BOND MILDRED V 1891 - 1926	N/A	Flowers, vine	Good
Coffin	Harold Doane	1865	1926	61	Male	Yes	Yes	Yes	24	NW	D	Individual	Monument	Arc	Concrete	(top) FATHER (face) HAROLD DOANE COFFIN 1865 - 1926	N/A	N/A	Good
Erickson	Mary A.	1918	1926	8	Female	Yes	Yes	Yes	44	E	B	Individual	Flat	N/A	Concrete	MARY A ERICKSON 1918 - 1926	N/A	Ivy	Poor. Broken in 2 pieces, chipped.
Mannering	Charles Rafael	1904	1926	22	Male	Yes	Yes	Yes	32	SW	D	Individual	Monument	Square Top	Granite	CHARLES R MANNERING 1904 - 1926	N/A	Roses (adult flowers)	Good
Peterson	Paul	1835	1926	91	Male	Yes	Yes	Yes	45	E	C	Group	Monument	Arc	Marble, Concrete	PETERSON (center) FATHER PAUL 1835 - 1926	N/A	N/A	Good
Ritz	Anna	Unknown	1926	Unknown	Female	Yes	Yes	Yes	52	SW	B	Individual	Flat	N/A	Concrete	MISS ANNA RITZ DIED DEC 16 1926	N/A	N/A	Fair. Faded.
Schaffer	Myrtle	Unknown	1926	Unknown	Female	No	No	Yes	Not Observed	Not Observed	Not Observed	Not Observed	N/A	N/A	N/A	N/A	N/A	N/A	N/A
Stephney	James D.	Unknown	1926	Unknown	Male	No	No	Yes	Not Observed	Not Observed	Not Observed	Not Observed	N/A	N/A	N/A	N/A	N/A	N/A	N/A
Albrecht	Anna	1883	1927	44	Female	No	No	Yes	Not Observed	Not Observed	Not Observed	Not Observed	N/A	N/A	N/A	N/A	N/A	N/A	N/A

Table A-1
Online Burial Records and On-Site Observations

Last Name	First Name	Birth Year	Death Year	Approximate Age at Death	Sex	Observed on Site March 2020	Listed on USGENWEB (2005)	Listed on FindaGrave	Block	Section	Plot	Monument Status	Monument Type	Shape (If Upright)	Material	Inscription Front	Inscription Base	Symbol(s)	Condition
Albrecht	Sarah Catherine Bowman	1848	1927	79	Female	Yes	Yes	Yes	Urn Garden A	N/A	I	Individual	Flat	N/A	Concrete	SARAH C ALBRECHT BORN MAR 3 1848 DIED SEPT 25 1927	N/A	N/A	Fair, faded.
Beadles	Willis Calvert	1847	1927	80	Male	No	No	Yes	Not Observed	Not Observed	Not Observed	Not Observed	N/A	N/A	N/A	N/A	N/A	N/A	N/A
Draper	Annie H. Pacey	1858	1927	69	Female	Yes	Yes	Yes	27	NW	D	Group	Monument	Arc	Concrete	DRAPER ANNIE 1858 - 1927	N/A	Rose (adult flowers), Fern	Fair. Eroded, chipped.
Draper	Mainard	1856	1927	71	Male	Yes	Yes	Yes	27	NW	E	Group	Monument	Arc	Concrete	DRAPER MAINARD 1856 - 1927	N/A	Rose (adult flowers), Fern	Fair. Eroded, chipped.
Thrasher	Jennie L.	Unknown	1927	Unknown	Female	No	No	Yes	Not Observed	Not Observed	Not Observed	Not Observed	N/A	N/A	N/A	N/A	N/A	N/A	N/A
Towen	Griffin	Unknown	1927	Unknown	Male	No	Yes	No	Not Observed	Not Observed	Not Observed	Not Observed	N/A	N/A	N/A	N/A	N/A	N/A	N/A
Claiborn	Mary Matilda Glenn	1852	1928	76	Female	Yes	Yes	Yes	29	NW	B	Group	Monument	Vaulted Obelisk	Concrete, Granite	(side 2) MARY M. 1852 - 1928	CLAIBORN	Grapevine	Good
Heyder	Erna	1895	1928	33	Female	Yes	Yes	Yes	12	SW	B	Individual	Monument	Arc	Marble, Concrete	ERNA HEYDER 1895 - 1928 Gone but not forgotten. HEYDER	N/A	N/A	Good
Merchant	Ella A	Unknown	1928	Unknown	Female	No	No	Yes	Not Observed	Not Observed	Not Observed	Not Observed	N/A	N/A	N/A	N/A	N/A	N/A	N/A
Robbins	Alice G.	Unknown	1928	Unknown	Female	No	No	Yes	Not Observed	Not Observed	Not Observed	Not Observed	N/A	N/A	N/A	N/A	N/A	N/A	N/A
Swanson	Otto	1874	1928	54	Male	Yes	Yes	Yes	35	E	A	Individual	Flat	N/A	Concrete	OTTO SWANSON DIED APRIL 2 1928 AGE 54 YEARS	N/A	N/A	Fair. Faded.
Utz	Mary Sophia	1861	1928	67	Female	No	No	Yes	Not Observed	Not Observed	Not Observed	Not Observed	N/A	N/A	N/A	N/A	N/A	N/A	N/A
Barley	Dora M.	Unknown	1929	Unknown	Female	No	No	Yes	Not Observed	Not Observed	Not Observed	Not Observed	N/A	N/A	N/A	N/A	N/A	N/A	N/A
Carter	Frances W	Unknown	1929	Unknown	Unknown	No	No	Yes	Not Observed	Not Observed	Not Observed	Not Observed	N/A	N/A	N/A	N/A	N/A	N/A	N/A
Duxbury	Lucille	1899	1929	30	Female	Yes	No	Yes	57	E	C	Individual	Flat	N/A	Concrete	LUCILLE BUXBURY BORN MAY ---- DIED MAY 8 ----	N/A	N/A	Fair. Faded
Jakobsen	Bertha Marie	Unknown	1929	Unknown	Female	No	Yes	No	Not Observed	Not Observed	Not Observed	Not Observed	N/A	N/A	N/A	N/A	N/A	N/A	N/A
Price	Mary Jane Hopkins	1854	1929	75	Female	No	No	Yes	Not Observed	Not Observed	Not Observed	Not Observed	N/A	N/A	N/A	N/A	N/A	N/A	N/A
Rawls	Amanda	Unknown	1929	Unknown	Female	No	No	Yes	Not Observed	Not Observed	Not Observed	Not Observed	N/A	N/A	N/A	N/A	N/A	N/A	N/A
Barnet	Annie A. (or Anna A.)	Unknown	1930	Unknown	Female	Yes	Yes	Yes	Urn Garden A	N/A	F	Group	Pillow	N/A	Marble	ANNIE A. BARNET	N/A	N/A	Good
Edgington	William	1847	1930	83	Male	Yes	Yes	Yes	7	N/A	A	Individual	Pillow	N/A	Marble, Concrete	WILLIAM EDGINGTON 1847 - 1930	N/A	N/A	Good
Ellington	Juda V.	1858	1930	72	Male	Yes	Yes	Yes	52	NE	G	Group	Pillow	N/A	Marble	ELLINGTON (right) JUDA V 1858 - 1930	N/A	N/A	Good

Table A-1
Online Burial Records and On-Site Observations

Last Name	First Name	Birth Year	Death Year	Approximate Age at Death	Sex	Observed on Site March 2020	Listed on USGENWEB (2005)	Listed on FindaGrave	Block	Section	Plot	Monument Status	Monument Type	Shape (If Upright)	Material	Inscription Front	Inscription Base	Symbol(s)	Condition
Gramm	Bentley	Unknown	1930	Unknown	Male	No	No	Yes	Not Observed	Not Observed	Not Observed	Not Observed	N/A	N/A	N/A	N/A	N/A	N/A	N/A
Haines	Fred G.	1871	1930	59	Male	Yes	Yes	Yes	6	SE	C	Individual	Flat	N/A	Concrete	FRED G. HAINES 1871 - 1930	N/A	N/A	Fair (Faded)
Harris	William Homan	1930	1930	0	Male	No	No	Yes	Not Observed	Not Observed	Not Observed	Not Observed	N/A	N/A	N/A	N/A	N/A	N/A	N/A
Lindahl	Oscar L.	1861	1930	69	Male	Yes	Yes	Yes	10	NW	C	Group	Pillow	N/A	Marble	LINDAHL (left) OSCAR L. APR 15 1861 OCT 19 1930 FATHER	N/A	N/A	Good
Logan	Josephine	Unknown	1930	Unknown	Female	No	No	Yes	Not Observed	Not Observed	Not Observed	Not Observed	N/A	N/A	N/A	N/A	N/A	N/A	N/A
McLellan	Hattie Lucretia	1868	1930	62	Female	No	No	Yes	Not Observed	Not Observed	Not Observed	Not Observed	N/A	N/A	N/A	N/A	N/A	N/A	N/A
Miles	Allen W.	1852	1930	78	Male	Yes	Yes	Yes	46	SW	C	Individual	Monument	Square Top	Concrete	ALLEN W MILES 1852 - 1930	N/A	Ivy	Good
Reeploeg	Gerald	1888	1930	42	Male	Yes	Yes	Yes	8	NW	A	Individual	Flat	N/A	Marble	DAD GERALD REEPLAEG 1888 - 1930	N/A	N/A	Good
Beadles	Mary Ella	1854	1931	77	Female	Yes	Yes		32	NE	H	Individual	Slant	N/A	Granite	MOTHER MARY E BEADLES AUG 22 1854 FEB 6 1931	N/A	Ivy	Fair. Chipped
Elsey	Donald W.	1927	1931	4	Male	Yes	Yes	Yes	37	SE	D	Individual	Monument	Square Top	Concrete	(top) OUR DARLING (face) DONALD W ELSEY SEPT 6 1927 OCT 17 1931	N/A	Dove	Good
Kindling	Marie	Unknown	1931	Unknown	Female	No	No	Yes	Not Observed	Not Observed	Not Observed	Not Observed	N/A	N/A	N/A	N/A	N/A	N/A	N/A
Pennington	William Hyland	1846	1931	Unknown	Male	Yes	Yes	Yes	50	W	C	Individual	Monument	Arc	Concrete	WILLIAM H PENNINGTON CO. E 39 ILL NF.	N/A	N/A	Poor. Broken, face lying flat on ground with no base visible.
Robbins	James H.	Unknown	1931	Unknown	Male	No	No	Yes	Not Observed	Not Observed	Not Observed	Not Observed	N/A	N/A	N/A	N/A	N/A	N/A	N/A
Berry	Alan Sawyer	1927	1932	5	Male	Yes	Yes	Yes	29	NE	F	Individual	Flat	N/A	Marble	ALAN SAWYER BERRY AUG 3 1927 SEPT 23 1932	N/A	Owl, Deer, Squirrel	Good
Dickinson	Merton Emmett	1862	1932	70	Male	Yes	yes	Yes	25	SE	D	Individual	Flat	N/A	Marble	MERTON E. DICKINSON JULY 5, 1862 OCT 13, 1932	N/A	N/A	Good
Elsey	John C.	1862	1932	70	Male	Yes	Yes	Yes	4	W	E	Individual	Pillow	N/A	Marble	JOHN C. ELSEY 1862 - 1932	N/A	N/A	Good

Table A-1
Online Burial Records and On-Site Observations

Last Name	First Name	Birth Year	Death Year	Approximate Age at Death	Sex	Observed on Site March 2020	Listed on USGENWEB (2005)	Listed on FindaGrave	Block	Section	Plot	Monument Status	Monument Type	Shape (If Upright)	Material	Inscription Front	Inscription Base	Symbol(s)	Condition
Goldschmidt	Adolf (Adolph)	1862	1932	70	Male	Yes	Yes	Yes	12	NE	G	Group	Monument	Vaulted Obelisk	Concrete	(side 1) ADOLF GOLDSCHMIDT SEPT 18 1862 DEC 29 1932	GOLDSCHMIDT	Cross, grapevine	Good
Grist	Jeremiah Simon	1855	1932	77	Male	Yes	Yes	Yes	23	SE	B	Individual	Flat	N/A	Marble, Concrete	J.S. GRIST DEC 11, 1855 OCT 9, 1932	N/A	N/A	Good
Johnson	Christina	1850	1932	82	Female	Yes	Yes	Yes	2	W	C	Group	Flat	N/A	Marble, Concrete	JOHNSON 1850 CHRISTINA 1932	N/A	N/A	Good
Washburn	Agnes	Unknown	1932	Unknown	Female	No	No	Yes	Not Observed	Not Observed	Not Observed	Not Observed	N/A	N/A	N/A	N/A	N/A	N/A	N/A
Elsy	Ellen	1842	1933	91	Female	Yes	Yes	Yes	4	W	C	Individual	Monument	Square Top	Marble	ELLEN ELSEY AUG 3 1842 MAR 30 1933	ELSEY	N/A	Good
Grist	Cora Alice White	1855	1933	78	Female	Yes	Yes	Yes	23	SE	C	Individual	Flat	N/A	Marble, Concrete	CORA A. GRIST NOV 17, 1855 JUNE 9, 1933	N/A	N/A	Good
Johnson	Andrew J.	1870	1933	63	Male	Yes	Yes	Yes	12	NW	C	Individual	Pillow	N/A	Marble	ANDREW J JOHNSON DEC 3 JAN 25 1870 1933	N/A	N/A	Good
Johnson	Carl	1849	1933	84	Male	Yes	Yes	Yes	2	W	B	Group	Flat	N/A	Marble, Concrete	JOHNSON 1849 CARL 1933	N/A	N/A	Good
Luther	Charles L.	Unknown	1933	Unknown	Male	No	No	Yes	Not Observed	Not Observed	Not Observed	Not Observed	N/A	N/A	N/A	N/A	N/A	N/A	N/A
Merchant	William	Unknown	1933	Unknown	Male	No	No	Yes	Not Observed	Not Observed	Not Observed	Not Observed	N/A	N/A	N/A	N/A	N/A	N/A	N/A
Utz	Anton	1850	1933	83	Male	No	No	Yes	Not Observed	Not Observed	Not Observed	Not Observed	N/A	N/A	N/A	N/A	N/A	N/A	N/A
Boyd	Melissa Jane	1852	1934	82	Female	Yes	Yes	Yes	Urn Garden A	N/A	A	Individual	Monument	Square Top	Concrete, Granite	MELISSA J BOYD 1852 - 1934	N/A	N/A	Good. Chipped
Commons	Ella Long	1855	1934	79	Female	No	No	Yes	Not Observed	Not Observed	Not Observed	Not Observed	N/A	N/A	N/A	N/A	N/A	N/A	N/A
James	Minnie	Unknown	1934	Unknown	Female	No	No	Yes	Not Observed	Not Observed	Not Observed	Not Observed	N/A	N/A	N/A	N/A	N/A	N/A	N/A
Ragen	Mabel C.	1852	1934	82	Female	No	Yes	Yes	Not Observed	Not Observed	Not Observed	Not Observed	N/A	N/A	N/A	N/A	N/A	N/A	N/A
Seiler	Jacob	Unknown	1934	Unknown	Male	No	No	Yes	Not Observed	Not Observed	Not Observed	Not Observed	N/A	N/A	N/A	N/A	N/A	N/A	N/A
Swanson	Fred	1899	1934	35	Male	Yes	Yes	Yes	35	E	C	Group and Individual	Flat	N/A	Concrete	FRED SWANSON FEB 7 1899 DEC 5 1934	N/A	N/A	Fair.
Battles	Charles H.	1870	1935	65	Male	Yes	Yes	Yes	16	W	A	Group	Pillow	N/A	Marble	BATTLES CHARLES H 1870-1935	N/A	N/A	Good
Benton	James M.	Unknown	1935	Unknown	Male	No	No	Yes	Not Observed	Not Observed	Not Observed	Not Observed	N/A	N/A	N/A	N/A	N/A	N/A	N/A

Table A-1
Online Burial Records and On-Site Observations

Last Name	First Name	Birth Year	Death Year	Approximate Age at Death	Sex	Observed on Site March 2020	Listed on USGENWEB (2005)	Listed on FindaGrave	Block	Section	Plot	Monument Status	Monument Type	Shape (If Upright)	Material	Inscription Front	Inscription Base	Symbol(s)	Condition
Fox	Rudolph H.	1907	1935	28	Male	Yes	No	Yes	12	SW	A	Individual	Monument	Square Top	Concrete, Cast Iron	RUDOLPH. H. FOX BORN JAN 17 1907 DIED JULY 21 - 1935	N/A	N/A	Good
Graham	George Dean	1866	1935	69	Male	Yes	Yes	Yes	5	NE	B	Group	Flat	N/A	Marble	(left) GEORGE 1866 - 1935 (right) (center) GRAHAM	N/A	N/A	Good
McKeel	Walter	1870	1935	65	Male	No	No	Yes	Not Observed	Not Observed	Not Observed	Not Observed	N/A	N/A	N/A	N/A	N/A	N/A	N/A
Schnoor	Charles H.	1852	1935	83	Male	No		Yes	Not Observed	Not Observed	Not Observed	Not Observed	N/A	N/A	N/A	N/A	N/A	N/A	N/A
Bisbee	Frederick G.	1851	1936	85	Male	Yes	Yes	Yes	36	W	A	Individual	Monument	Square Top	Concrete	(top) FATHER (face) FREDERICK G BISBEE 1851 - 1936	N/A	Ivy	Poor. Top and base missing.
Edgington	Hannah	1854	1936	82	Female	Yes	Yes	Yes	7	N/A	B	Individual	Pillow	N/A	Marble, Concrete	HANNAH EDGINGTON 1854 - 1936	N/A	N/A	Good
Ferguson	William McLain	1895	1936	41	Male	No	Yes	Yes	Not Observed	Not Observed	Not Observed	Not Observed	N/A	N/A	N/A	N/A	N/A	N/A	N/A
Fleming	A.W.	Unknown	1936	Unknown	Unknown	No	No	Yes	Not Observed	Not Observed	Not Observed	Not Observed	N/A	N/A	N/A	N/A	N/A	N/A	N/A
Hendrickson	Olaf	1855	1936	81	Male	Yes	Yes	Yes	Urn Garden A	N/A	J	Individual	Flat	N/A	Marble	In loving memory OLAF HENDRICKSON NOV 20 1855 JULY 10 1936	N/A	Conifer with cones	Good, some discoloration
May	Anna E.	Unknown	1936	Unknown	Female	No	No	Yes	Not Observed	Not Observed	Not Observed	Not Observed	N/A	N/A	N/A	N/A	N/A	N/A	N/A
O'Brien	Thelma	1899	1936	37	Female	Yes	Yes	Yes	Urn Garden B	N/A	C	Individual	Flat	N/A	Marble	DAUGHTER THELMA O'BRIEN 1899 - 1936	N/A	N/A	Good
Anderson	Carl	Unknown	1937	Unknown	Male	No	No	Yes	Not Observed	Not Observed	Not Observed	Not Observed	N/A	N/A	N/A	N/A	N/A	N/A	N/A
Engeset (misspelled Sangeset)	Lawrence S. "Lars"	1869	1937	68	Male	Yes	Yes	Yes	32	SW	B	Individual	Pillow	N/A	Marble	FATHER LARS S ENGESET 1869 - 1937	N/A	N/A	Good
Kaufman	Albert W.	1853	1937	84	Male	Yes	Yes	Yes	23	SE	D	Group	Flat	N/A	Marble	KAUFMAN OUR BELOVED PARENTS 1853 - ALBERT W. - 1937 F.L.T.	N/A	N/A	Good
Kaufman	Laura Abi Jackson	1855	1937	82	Female	Yes	Yes	Yes	23	SE	E	Group	Flat	N/A	Marble	KAUFMAN OUR BELOVED PARENTS 1855 - LURA A. - 1937	N/A	N/A	Good

**Table A-1
Online Burial Records and On-Site Observations**

Last Name	First Name	Birth Year	Death Year	Approximate Age at Death	Sex	Observed on Site March 2020	Listed on USGENWEB (2005)	Listed on FindaGrave	Block	Section	Plot	Monument Status	Monument Type	Shape (If Upright)	Material	Inscription Front	Inscription Base	Symbol(s)	Condition
Knutsen	Charlie	1862	1937	75	Male	Yes	Yes	Yes	Urn Garden B	N/A	D	Individual	Monument	Vaulted Obelisk	Concrete	FISHERMAN CHARLIE 1862 - 1937 In memory of his loyalty to Friendship, Honesty, Kindness, and Service to our community	KNUTSEN	Anchor	Good
Lowell	Geraldine	1920	1937	17	Female	Yes	Yes	Yes	37	SE	G	Individual	Flat	N/A	Concrete	GEARLDINE LOWELL 1920 - 1937 Smile on Jerry	N/A	N/A	Fair, cracked
Major	A.	Unknown	1937	Unknown	Unknown	No	No	Yes	Not Observed	Not Observed	Not Observed	Not Observed	N/A	N/A	N/A	N/A	N/A	N/A	N/A
Anderson	Oscar	1867	1938	71	Male	No	No	Yes	Not Observed	Not Observed	Not Observed	Not Observed	N/A	N/A	N/A	N/A	N/A	N/A	N/A
Graham	Violet K	1873	1938	65	Female	No	No	Yes	Not Observed	Not Observed	Not Observed	Not Observed	N/A	N/A	N/A	N/A	N/A	N/A	N/A
McLellan	Emma	Unknown	1938	Unknown	Female	Yes	Yes	Yes	51	W	A	Individual	Flat	N/A	Concrete	EMMA McLELLAN 1888	N/A	N/A	Fair. Faded.
McPherson	Elsie	Unknown	1938	Unknown	Female	No	No	Yes	Not Observed	Not Observed	Not Observed	Not Observed	N/A	N/A	N/A	N/A	N/A	N/A	N/A
Schnoor	Adeline	Unknown	1938	Unknown	Female	No	No	Yes	Not Observed	Not Observed	Not Observed	Not Observed	N/A	N/A	N/A	N/A	N/A	N/A	N/A
Stephney	Christina Wilson	Unknown	1938	Unknown	Female	No	No	Yes	Not Observed	Not Observed	Not Observed	Not Observed	N/A	N/A	N/A	N/A	N/A	N/A	N/A
Claiborn	Charles C.	Unknown	1939	Unknown	Male	No	No	Yes	Not Observed	Not Observed	Not Observed	Not Observed	N/A	N/A	N/A	N/A	N/A	N/A	N/A
Lindahl	Christina	1860	1939	79	Female	Yes	Yes	Yes	10	NW	B	Group	Pillow	N/A	Marble	LINDAHL (left) CHRISTINA AUG 27 1860 FEB 24 1939 MOTHER	N/A	N/A	Good
Piggott	Amelia	1885	1939	54	Female	Yes	No	Yes	30	W	B	Individual	Flat	N/A	Concrete	AMELIA 1885 PIGGOTT 1939	N/A	N/A	Good
Young	Charles H.	1864	1939	75	Male	Yes	Yes	Yes	6	NW	B	Individual	Pillow	N/A	Marble, Concrete	BROTHER CHARLES H. YOUNG 1864 - 1939	N/A	Flower wreath	Good (some moss)
Brown	Ella Barnett	1861	1940	79	Female	Yes	Yes	Yes	Urn Garden A	N/A	B	Individual	Flat	Irregular shape	Granite	ELLA BURIFF BROWN 1861 - 1940	N/A	N/A	Poor. Chipped, faded.
Fancher	Henry M.	1856	1940	84	Male	Yes	Yes	Yes	24	SW	B	Individual	Monument	Arc	Marble	HENRY M FANCHER 1856 - 1940	N/A	Flowers, Vine	Good
Tait	Elijah	1861	1940	79	Male	Yes	No	No	46	SW	A	Individual	Flat	N/A	Concrete	ELIJAH TAIT 1861 - 1940	N/A	N/A	Good. Handwritten text

Table A-1
Online Burial Records and On-Site Observations

Last Name	First Name	Birth Year	Death Year	Approximate Age at Death	Sex	Observed on Site March 2020	Listed on USGENWEB (2005)	Listed on FindaGrave	Block	Section	Plot	Monument Status	Monument Type	Shape (If Upright)	Material	Inscription Front	Inscription Base	Symbol(s)	Condition
Coffin	Mary Belle Vrooman	1868	1941	73	Female	Yes	Yes	Yes	24	NW	F	Individual	Monument	Arc	Concrete	(top) MOTHER (face) BELLE VROOMAN COFFIN 1868 - 1941	N/A	N/A	Good. Chipped
Goldtrip	William H.	1872	1941	69	Male	Yes	Yes	Yes	46	NE	M	Group	Flat	N/A	Cast Iron	WILLIAM GOLDTRIP 1872 1941	N/A	N/A	N/A
Kindling	Frederick	Unknown	1941	Unknown	Male	No	No	Yes	Not Observed	Not Observed	Not Observed	Not Observed	N/A	N/A	N/A	N/A	N/A	N/A	N/A
Peterson	Anna H.	1869	1941	72	Female	No	No	Yes	Not Observed	Not Observed	Not Observed	Not Observed	N/A	N/A	N/A	N/A	N/A	N/A	N/A
Strong	Lucille Pacey	Unknown	1941	Unknown	Female	Yes	Yes	Yes	27	NW	C	Group	Flat	N/A	Marble	LUCILLE PACEY STRONG	N/A	N/A	Good
Taplin	Martha "Mattie" McGee	1857	1941	84	Female	Yes	Yes	Yes	50	C	G	Individual	Pillow	N/A	Marble, Concrete	MARTHA TAPLIN 1857 - 1941	N/A	N/A	Good
Battles	Martha Lilliam Timmons	1874	1942	68	Female	Yes	Yes	Yes	16	W	B	Group	Pillow	N/A	Marble	BATTLES MARTHA L 1874-1942	N/A	N/A	Good
Carter	Elizabeth A.	Unknown	1942	Unknown	Female	No	No	Yes	Not Observed	Not Observed	Not Observed	Not Observed	N/A	N/A	N/A	N/A	N/A	N/A	N/A
Eley	James A.	Unknown	1942	Unknown	Male	Yes	Yes	Yes	4	W	A	Individual	Flat	N/A	Concrete	JAMES A. ELSEY DIED MAY 27 1942	N/A	N/A	Good
Erickson	Marie	Unknown	1942	Unknown	Female	No	No	Yes	Not Observed	Not Observed	Not Observed	Not Observed	N/A	N/A	N/A	N/A	N/A	N/A	N/A
Hendrickson	Edward Alexander	1898	1942	44	Male	Yes	Yes	Yes	Urn Garden A	N/A	M	Individual	Flat	N/A	Marble	In loving memory EDWARD ALEXANDER HENDRICKSON DEC 10 1898 JULY 19 1942	N/A	Conifer with cones	Good, some discoloration
Hostrop	Christina	Unknown	1942	Unknown	Female	No	No	Yes	Not Observed	Not Observed	Not Observed	Not Observed	N/A	N/A	N/A	N/A	N/A	N/A	N/A
Neil	Emma Sophia Sherman	1853	1942	89	Female	Yes	Yes	Yes	38	NE	A	Individual	Monument	Obelisk (partial, base only)	Marble	AT REST MOTHER EMMA S NEIL SEPT 18 1853 AUG 8 1942	N/A	N/A	Poor. Top is missing. Remaining portion is good condition.
Skoglund	Jessie A. Soper	1868	1942	74	Female	Yes	Yes	Yes	48	NE	B	Individual	Monument	Square Top, Rounded Shoulders	Marble, Concrete	JESSE A WIFE OF ANDREW SKOGLUND 1868 - 1942 GONE BUT NOT FORGOTTEN	N/A	Flowers	Good
Hendrickson	Justus Henry	1883	1943	60	Male	Yes	Yes	Yes	Urn Garden A	N/A	L	Individual	Flat	N/A	Marble	In loving memory JUSTUS HENRY HENDRICKSON SEPT 26 1883 APR 12 1943	N/A	Conifer with cones	Good, some discoloration

Table A-1
Online Burial Records and On-Site Observations

Last Name	First Name	Birth Year	Death Year	Approximate Age at Death	Sex	Observed on Site March 2020	Listed on USGENWEB (2005)	Listed on FindaGrave	Block	Section	Plot	Monument Status	Monument Type	Shape (If Upright)	Material	Inscription Front	Inscription Base	Symbol(s)	Condition
Hokanson	Julia Goldie Hendrickson	1883	1943	60	Female	Yes	Yes	Yes	Urn Garden A	N/A	K	Individual	Flat	N/A	Marble	In loving memory JULIA GOLDIE HENDRICKSON HOKANSON SEPT 26 1883 APR 12 1943	N/A	Rose (adult flowers)	Good, some discoloration
Major	Susie E.	Unknown	1943	Unknown	Female	No	No	Yes	Not Observed	Not Observed	Not Observed	Not Observed	N/A	N/A	N/A	N/A	N/A	N/A	N/A
Markwell	Florence Ida Rawls	1871	1943	72	Female	Yes	Yes	Yes	56	W	C	Individual	Flat	N/A	Marble	FLORENCE I MARKWELL 1871 - 1943	N/A	N/A	Good
McLellan	Walter G.	Unknown	1943	Unknown	Male	Yes	Yes	Yes	2	W	A	Individual	Flat	N/A	Concrete	WALTER G MCLELLAN 1943	N/A	N/A	Good
Peterson	Henry Ferdinand	1879	1943	64	Male	Yes	Yes	Yes	45	E	A	Group	Monument	Arc	Marble, Concrete	PETERSON (right) BROTHER HENRY F 1879 - 1943	N/A	N/A	Good
Clark	Patrick	1872	1945	73	Male	Yes	Yes	Yes	29	SE	C	Individual	Monument	Arc	Marble	HUSBAND PATRICK CLARK 1872 - 1945 In loving memory	N/A	Flowers	Good
Young	Myron	1866	1945	79	Male	Yes	Yes	Yes	6	NW	A	Individual	Pillow	N/A	Marble, Concrete	BROTHER MYRON YOUNG 1866 - 1945	N/A	Flower wreath	Good (some moss)
Stephney	Agnes A.	Unknown	1946	Unknown	Female	No	No	Yes	Not Observed	Not Observed	Not Observed	Not Observed	N/A	N/A	N/A	N/A	N/A	N/A	N/A
Erickson	Mary E.	1892	1947	55	Female	Yes	Yes	Yes	44	E	A	Individual	Flat	N/A	Concrete	MARY E ERICKSON 1892 - 1947	N/A	Ivy	Poor. Broken in 4 pieces, chipped.
Pirtle	Anna St. Johns	1864	1947	83	Female	Yes	Yes	Yes	53	NE	D	Individual	Pillow	N/A	Marble	ANNA ST. JOHNS PIRTLE 1864 - 1947	N/A	N/A	Good
Elsey	Everett E.	1891	1948	57	Male	Yes	Yes	Yes	47	NE	D	Individual	Pillow	N/A	Concrete	EVERETT E ELSEY WASHINGTON CPL 39 INF 4 DIV WORLD WAR I MARCH 24 1891 JUNE 15 1948	N/A	Cross in circle	Good
Heyder	Theodore E.	1887	1948	61	Male	No	No	Yes	Not Observed	Not Observed	Not Observed	Not Observed	N/A	N/A	N/A	N/A	N/A	N/A	N/A
Reeploeg	Chris	1857	1948	91	Male	No	Yes	Yes	Not Observed	Not Observed	Not Observed	Not Observed	N/A	N/A	N/A	N/A	N/A	N/A	N/A
Fairchild	Nora Belle	1874	1949	75	Female	Yes	Yes	Yes	27	SE	G	Individual	Flat	N/A	Marble	MOTHER NORA BELLE FAIRCHILD 1874 - 1949	N/A	Cross, Lily	Good
Fancher	Ida V.	1862	1949	87	Female	Yes	Yes	Yes	24	SW	C	Individual	Monument	Arc	Marble	IDA V FANCHER 1862 - 1949	N/A	Flowers, Vine	Good
Miles	Mary Ann Tait	1863	1949	86	Female	Yes	No	Yes	46	SW	B	Individual	Flat	N/A	Concrete	MARY A MILES 1863 - 1949	N/A	N/A	Good. Handwritten text

Table A-1
Online Burial Records and On-Site Observations

Last Name	First Name	Birth Year	Death Year	Approximate Age at Death	Sex	Observed on Site March 2020	Listed on USGENWEB (2005)	Listed on FindaGrave	Block	Section	Plot	Monument Status	Monument Type	Shape (If Upright)	Material	Inscription Front	Inscription Base	Symbol(s)	Condition
Berry	Marcus Jackson	1859	1950	91	Male	Yes	Yes	Yes	29	NE	G	Group	Flat	N/A	Marble	BERRY (right) MARCUS J 1859 - 1950	N/A	N/A	Good
Erickson	H.I.	Unknown	1950	Unknown	Unknown	No	No	Yes	Not Observed	Not Observed	Not Observed	Not Observed	N/A	N/A	N/A	N/A	N/A	N/A	N/A
Erickson	Oscar	1886	1950	64	Male	No	No	Yes	Not Observed	Not Observed	Not Observed	Not Observed	N/A	N/A	N/A	N/A	N/A	N/A	N/A
Ford	Marion	Unknown	1950	Unknown	Female	No	No	Yes	Not Observed	Not Observed	Not Observed	Not Observed	N/A	N/A	N/A	N/A	N/A	N/A	N/A
Swanson	Hannah M.	1877	1950	73	Female	Yes	Yes	Yes	35	E	B	Group	Monument	Rounded Shoulders	Marble	SWANSON 1877 HANNAH M 1950	N/A	N/A	Good
Nelson	Victor A.	1869	1951	82	Male	Yes	Yes	Yes	17	W	A B	Individual	Pillow	N/A	Marble	NELSON VICTOR A 1869-1951	N/A	N/A	Good
Rose	Mary Elnora Markwell	1871	1951	80	Female	No	No	Yes	Not Observed	Not Observed	Not Observed	Not Observed	N/A	N/A	N/A	N/A	N/A	N/A	N/A
Wade (Possibly Engeset with Wade as middle name)	Elias	1897	1951	54	Male	Yes	No	Yes	32	SW	A	Individual	Flat	N/A	Marble, Concrete	ELIAS WADE 1897 - 1951	N/A	N/A	Good
Dunbar	Aaron D.	1865	1952	87	Male	Yes	Yes	Yes	46	NW	F G	Group	Flat	N/A	Marble	DUNBAR AARON D 1865 FATHER 1952 HATTIE M 1867 MOTHER 1916	N/A	Flowers (poppies)	Good
Wilson	Bertha Marie	1886	1952	66	Female	Yes	Yes	Yes	31	NE	A	Group	Flat	N/A	Marble, Concrete	WILSON (right) BERTHA MARIE 1886 - 1952	N/A	N/A	Good
Ellington	Robert A.	1861	1953	92	Male	Yes	Yes	Yes	52	NE	H	Group	Pillow	N/A	Marble	ELLINGTON (left) ROBERT A. 1861 - 1953	N/A	N/A	Good
Hyde	John	1858	1953	95	Male	Yes	Yes	Yes	54	SW	C	Individual	Flat	N/A	Concrete, Cast Iron	JOHN HYDE 1858 - 1953	N/A	Conifer with cones	Good
Langon	John	Unknown	1953	Unknown	Male	No	No	Yes	Not Observed	Not Observed	Not Observed	Not Observed	N/A	N/A	N/A	N/A	N/A	N/A	N/A
Martin	Raymond L.	1891	1953	62	Male	Yes	Yes	Yes	49	E	H	Individual	Flat	N/A	Marble	RAYMOND L MARTIN AUG 16 1891 SEPT 8 1953	N/A	N/A	Good
Wilson	James Vern	1884	1953	69	Male	Yes	Yes	Yes	31	NE	B	Group	Flat	N/A	Marble, Concrete	WILSON (left) JAMES VERN 1884 - 1953	N/A	N/A	Good
Eley	Lillian G.	1865	1954	89	Female	Yes	Yes	Yes	49	E	G	Individual	Flat	N/A	Marble	LILLIAN G ELSEY NOV 15 1865 FEB 4 1954	N/A	N/A	Good
Harris	Helen G.	1884	1954	70	Female	No	No	Yes	Not Observed	Not Observed	Not Observed	Not Observed	N/A	N/A	N/A	N/A	N/A	N/A	N/A

Table A-1
Online Burial Records and On-Site Observations

Last Name	First Name	Birth Year	Death Year	Approximate Age at Death	Sex	Observed on Site March 2020	Listed on USGENWEB (2005)	Listed on FindaGrave	Block	Section	Plot	Monument Status	Monument Type	Shape (If Upright)	Material	Inscription Front	Inscription Base	Symbol(s)	Condition
Engeset (mispelled Sangeset)	Edwin	1906	1955	49	Male	Yes	Yes	Yes	32	SE	F	Individual	Flat	N/A	Marble	EDWIN ENGESET 1906 - 1955	N/A	N/A	Fair
Grover	Gene J.	1897	1956	59	Male	No	No	Yes	Not Observed	Not Observed	Not Observed	Not Observed	N/A	N/A	N/A	N/A	N/A	N/A	N/A
May	Bob	Unknown	1956	Unknown	Male	No	No	Yes	Not Observed	Not Observed	Not Observed	Not Observed	N/A	N/A	N/A	N/A	N/A	N/A	N/A
Albrecht	Karl	Unknown	1957	Unknown	Male	No	No	Yes	Not Observed	Not Observed	Not Observed	Not Observed	N/A	N/A	N/A	N/A	N/A	N/A	N/A
Blakeslee	Abbie Vernan Campbell	1906	1957	51	Female	No	No	Yes	Not Observed	Not Observed	Not Observed	Not Observed	N/A	N/A	N/A	N/A	N/A	N/A	N/A
Ellington	Esther G	1882	1957	75	Female	Yes	Yes	Yes	12	NW	D	Individual	Pillow	N/A	Marble, Concrete	ESTHER H ELLINGTON JULY 28 MAR 6 1882 1957 MOTHER	N/A	Flowers	Good
Hiddleston	Virginia Rae	Unknown	1957	Unknown	Female	No	No	Yes	Not Observed	Not Observed	Not Observed	Not Observed	N/A	N/A	N/A	N/A	N/A	N/A	N/A
Hughes	Albert	Unknown	1957	Unknown	Male	No	No	Yes	Not Observed	Not Observed	Not Observed	Not Observed	N/A	N/A	N/A	N/A	N/A	N/A	N/A
Hughes	Fred A.	1875	1957	82	Male	Yes	No	Yes	16	E	C	Individual	Flat	Round	Cement	FRED A HUGHES 1875 - 1957	N/A	N/A	Fair
Peterson	Alice J.	Unknown	1957	Unknown	Female	No	No	Yes	Not Observed	Not Observed	Not Observed	Not Observed	N/A	N/A	N/A	N/A	N/A	N/A	N/A
Berry	Sarah J. Claiborn	1879	1958	79	Female	Yes	Yes	Yes	29	NE	H	Group	Flat	N/A	Marble	BERRY (left) SARAH J 1879 - 1958	N/A	N/A	Good
Campbell	Annie M. (Ann Maria Goldtrip)	1866	1958	92	Female	Yes	Yes	Yes	46	NE	J	Group	Flat	N/A	Cast Iron	ANNIE M CAMPBELL 1866 1958	N/A	N/A	N/A
Dickinson	Jeanette "Nettie" Finnell	1865	1958	93	Female	Yes	Yes	Yes	25	SE	C	Individual	Flat	N/A	Concrete	NETTIE P. DICKINSON 1865 - 1958	N/A	N/A	Fair
Finnell	Alice Carrie Stark	1869	1958	89	Female	No	No	Yes	Not Observed	Not Observed	Not Observed	Not Observed	N/A	N/A	N/A	N/A	N/A	N/A	N/A
Iverson	Oscar	1871	1958	87	Male	No	No	Yes	Not Observed	Not Observed	Not Observed	Not Observed	N/A	N/A	N/A	N/A	N/A	N/A	N/A
Price	Lillian Antionette	1875	1958	83	Female	No	No	Yes	Not Observed	Not Observed	Not Observed	Not Observed	N/A	N/A	N/A	N/A	N/A	N/A	N/A
Van Riper	Marie Alberta Bernard	1903	1958	55	Female	Yes	Yes	Yes	Urn Garden A	N/A	E	Group	Pillow	N/A	Marble	MARIE BERNARD VAN RIPER	N/A	N/A	Good
Barnet	Carl	Unknown	1959	Unknown	Male	No	No	Yes	Not Observed	Not Observed	Not Observed	Not Observed	N/A	N/A	N/A	N/A	N/A	N/A	N/A
Draper	Harry Pacey	1880	1959	79	Male	Yes	Yes	Yes	27	NE	H	Individual	Flat	N/A	Marble	HARRY PACEY DRAPER OCT 8 1880 MAY 25 1959	N/A	N/A	Good
Elsy	Earl	1878	1960	82	Male	Yes	Yes	Yes	37	NW	A	Group	Monument	Oval with Checks	Marble	ELSEY EARL 1878 FATHER 1960	N/A	Flowers	Good
Campbell	J.W.	Unknown	1961	Unknown	Male	No	No	Yes	Not Observed	Not Observed	Not Observed	Not Observed	N/A	N/A	N/A	N/A	N/A	N/A	N/A

Table A-1
Online Burial Records and On-Site Observations

Last Name	First Name	Birth Year	Death Year	Approximate Age at Death	Sex	Observed on Site March 2020	Listed on USGENWEB (2005)	Listed on FindaGrave	Block	Section	Plot	Monument Status	Monument Type	Shape (If Upright)	Material	Inscription Front	Inscription Base	Symbol(s)	Condition
Ives	Ella	Unknown	1961	Unknown	Female	No	No	Yes	Not Observed	Not Observed	Not Observed	Not Observed	N/A	N/A	N/A	N/A	N/A	N/A	N/A
Nelson	Agnes A.	1884	1961	77	Female	Yes	Yes	Yes	17	W	A B	Individual	Pillow	N/A	Marble	NELSON AGNES A 1884 - --	N/A	N/A	Good
Clark	Anna E.	1872	1962	90	Female	Yes	Yes	Yes	29	SE	D	Individual	Flat	N/A	Marble, Concrete	ANNA E CLARK 1872 - 1962	N/A	N/A	Good
Hughes	Lily Mae	Unknown	1962	Unknown	Female	No	No	Yes	Not Observed	Not Observed	Not Observed	Not Observed	N/A	N/A	N/A	N/A	N/A	N/A	N/A
Meier	Henry B.	1885	1962	77	Male	Yes	Yes	Yes	11	SW	B	Individual	Flat	N/A	Marble	HENRY B. MEIER 1885 - 1962	N/A	Cross	Good
Moses	Otto	1872	1962	90	Male	Yes	Yes	Yes	49	C	E	Group	Flat	N/A	Marble	MOSES (center) OTTO Nov 18 1872 Sept 16 1962 Husband Ashes	N/A	N/A	Good
Hamilton	Fay Harlan	1891	1963	72	Female	Yes	Yes	Yes	52	SE	F	Individual	Flat	N/A	Marble	1891 FAY H. HAMILTON 1963	N/A	Flowers	Good
Langon	Anna	Unknown	1964	Unknown	Female	No	No	Yes	Not Observed	Not Observed	Not Observed	Not Observed	N/A	N/A	N/A	N/A	N/A	N/A	N/A
Peck	Mark Barnet (misspelled Marie)	1896	1966	70	Male	Yes	Yes	Yes	Urn Garden A	N/A	C	Group	Pillow	N/A	Marble	MARK BARNET PECK MAY 8, 1896 - FEB 4, 1966	N/A	N/A	Good
Esey	Myrtle	Unknown	1967	Unknown	Female	No	No	Yes	Not Observed	Not Observed	Not Observed	Not Observed	N/A	N/A	N/A	N/A	N/A	N/A	N/A
Hall	Elizabeth Jane	1875	1968	93	Female	Yes	Yes	Yes	25	SW	A	Individual	Flat	N/A	Marble	ELIZABETH J HALL AUG 8 1875 AUG 7 1968	N/A	Cross	Good
Vigfusson (Jakobsen?)	Gudrun BB	1880	1968	88	Female	Yes	Yes	Yes	43	SE	F	Group	Flat	N/A	Marble	JAKOBSEN (center) GUDRUN BB VIGFUSSON 1880 - 1968	N/A	N/A	Good
Dunbar	Roy W.	1895	1970	75	Male	Yes	Yes	Yes	46	NW	E	Individual	Flat	N/A	Marble, Concrete	BROTHER ROY W DUNBAR OCT MAY 13 1895 1970	N/A	N/A	Good
Engeset	Anna Wade	1886	1970	84	Female	Yes	Yes	Yes	32	SW	C	Individual	Pillow	N/A	Marble	MOTHER ANNA W ENGESET 1886 - 1970	N/A	N/A	Fair. Chipped
Enochs	Elmo M.	1901	1972	71	Male	Yes	Yes		32	SE	G	Individual	Flat	N/A	Marble	ENOCHS ELMO M	N/A	N/A	Fair
Berg	William A.	1877	1973	96	Male	Yes	Yes	Yes	51	E	G	Group	Flat	N/A	Marble	BERG (left side) WILLIAM A 1887 - 1973	N/A	N/A	Good
Draper	Effie Alice Rodda	1885	1973	88	Female	Yes	Yes	Yes	27	NE	I	Individual	Flat	N/A	Marble	EFFIE ALICE DRAPER MAR 25 1885 JUNE 15 1973	N/A	N/A	Good

**Table A-1
Online Burial Records and On-Site Observations**

Last Name	First Name	Birth Year	Death Year	Approximate Age at Death	Sex	Observed on Site March 2020	Listed on USGENWEB (2005)	Listed on FindaGrave	Block	Section	Plot	Monument Status	Monument Type	Shape (If Upright)	Material	Inscription Front	Inscription Base	Symbol(s)	Condition
Berg	Gladys M.	1890	1975	85	Female	Yes	Yes	Yes	51	E	F	Group	Flat	N/A	Marble	BERG (right side) GLADYS M 1890 - 1975	N/A	N/A	Good
Berg	Roberta B.	1918	1977	59	Female	Yes	Yes	Yes	51	E	E	Individual	Flat	N/A	Marble	IN LOVING MEMORY ROBERTA B. BERG 1918 - 1977	N/A	Roses (adult flowers)	Good
Meier	Anita	1903	1978	75	Female	Yes	Yes	Yes	11	SW	A	Individual	Flat	N/A	Marble	ANITA MEIER 1903 - 1978	N/A	Cross	Good
Coffin	Ralph V.	1900	1979	79	Male	Yes	Yes		24	NW	E	Individual	Flat	N/A	Marble, Concrete	RALPH V COFFIN 1900 - 1979	N/A	N/A	Good
Moses	Leonard E	1921	1980	59	Male	Yes	Yes	Yes	49	C	D	Group	Flat	N/A	Marble	MOSES (right) LEONARD E Apr 10 1921 Apr 24 1980 Son Ashes	N/A	N/A	Good
Berg	Edward W.	1916	1981	65	Male	Yes	Yes	Yes	51	E	D	Individual	Flat	N/A	Granite	EDWARD W BERG SSGT US ARMY WORLD WAR II JUN 25 1916 SEPT 2 1981	N/A	Cross in circle	Good
Jennings	Rex B.	1900	1984	84	Male	Yes	Yes	Yes	47	SW	B	Individual	Flat	N/A	Granite	REX B JENNINGS 1900 - 1984	N/A	Illegible, possibly mountain?	Good
Lindahl	Ruby M.	1932	1985	53	Female	Yes	Yes	Yes	10	SW	A	Individual	Pillow	N/A	Marble	RUBY M. LINDAHL MOTHER 5-24-1985 - 12-27-1932	N/A	Flowers	Good
Moses	Rilda Mae Martin	1893	1988	95	Female	Yes	Yes	Yes	49	C	F	Group	Flat	N/A	Marble	MOSES (middle) RILDA MAE May 14 1893 Oct 12 1988 Wife Ashes	N/A	N/A	Good
Elsy	Dollie Iverson	1905	1990	85	Female	Yes	Yes	Yes	37	SE	E	Individual	Flat	N/A	Granite, Concrete	DOLLIE IVERSON ELSEY FEB 24 1905 FEB 14 1990	N/A	N/A	Good
Fisher	Anna Reeploeg	1900	1994	94	Female	Yes	Yes	Yes	8	NW	B	Individual	Flat	N/A	Marble	ANNE REEPLOEG FISHER 1900 - 1994	N/A	N/A	Good
Enochs	Hilda Engeset	1904	1995	91	Female	No	No	Yes	Not Observed	Not Observed	Not Observed	Not Observed	N/A	N/A	N/A	N/A	N/A	N/A	N/A
Draper	Melanie G. Elsner	1912	1996	84	Female	Yes	Yes	Yes	Urn Garden B	N/A	A	Group	Flat	N/A	Marble	DRAPER MELANIE G 1912 - 1996	N/A	N/A	Good
Draper	Vernon M.	1911	1996	85	Male	Yes	Yes	Yes	Urn Garden B	N/A	B	Group	Flat	N/A	Marble	DRAPER VERNON M 1911 - 1996	N/A	N/A	Good
Broderick	Carrie L. Laymore	1921	2001	80	Female	No	No	Yes	Not Observed	Not Observed	Not Observed	Not Observed	N/A	N/A	N/A	N/A	N/A	N/A	N/A
Kuehn	Yvonne N.	1930	2005	75	Female	No	No	Yes	Not Observed	Not Observed	Not Observed	Not Observed	N/A	N/A	N/A	N/A	N/A	N/A	N/A

Table A-1
Online Burial Records and On-Site Observations

Last Name	First Name	Birth Year	Death Year	Approximate Age at Death	Sex	Observed on Site March 2020	Listed on USGENWEB (2005)	Listed on FindaGrave	Block	Section	Plot	Monument Status	Monument Type	Shape (If Upright)	Material	Inscription Front	Inscription Base	Symbol(s)	Condition
Eley	Ronald Merle	1935	2007	72	Male	Yes	No	Yes	37	SE	F	Individual	Flat	N/A	Marble, Concrete	Gone Fishing RONALD MERLE ELSEY MAR 14 1935 JAN 17 2007	N/A	N/A	Good
Eley	Warren "Jim"	1925	2010	85	Male	Yes	No	Yes	37	SE	C	Individual	Flat	N/A	Granite	WARREN ELSEY PFC US ARMY WORLD WAR II MAR 13 1925 JULY 28 2010 BRONZE STAR MEDAL JIM GOD WINKED	N/A	Cross in circle	Good
Mitchell	Harry J.	1928	2011	83	Male	Yes	No	Yes	50	E	I	Individual	Flat	N/A	Marble, Concrete	HARRY J MITCHELL "A Flight Engineer" June 6, 1928 - Dec 7, 2011	N/A	N/A	Good
Barnet	Clara	Unknown	Unknown	Unknown	Female	Yes	Yes	Yes	Urn Garden A	N/A	D	Group	Pillow	N/A	Marble	CLARA BARNET	N/A	N/A	Good
Bernard	Gladys B. Barnet	Unknown	Unknown	Unknown	Female	Yes	yes	Yes	Urn Garden A	N/A	G	Group	Pillow	N/A	Marble	GLADYS B. BERNARD	N/A	N/A	Good
Draper	Cecil	Unknown	Unknown	Unknown	Male	No	No	Yes	Not Observed	Not Observed	Not Observed	Not Observed	N/A	N/A	N/A	N/A	N/A	N/A	N/A
Hostrop	Charles	Unknown	Unknown	Unknown	Male	No	No	Yes	Not Observed	Not Observed	Not Observed	Not Observed	N/A	N/A	N/A	N/A	N/A	N/A	N/A
Hughes	Harry D.	Unknown	Unknown	Unknown	Male	No	No	Yes	Not Observed	Not Observed	Not Observed	Not Observed	N/A	N/A	N/A	N/A	N/A	N/A	N/A
Jakobsen	Annette M. (Possibly Marie Annette?)	Unknown	Unknown	Unknown	Female	Yes	Yes	Yes	43	SE	D	Group	Flat	N/A	Marble	JAKOBSEN (left) ANNETTE M 1913	N/A	N/A	Good
McLellan	Ben F.	Unknown	Unknown	Unknown	Male	Yes	Yes	No	55	SW	A	Individual	Flat	N/A	Concrete	BEN F McLELLAN ---	N/A	N/A	Poor. Broken in 3 piece. Date illegible.
Pacey	John G., Senior	Unknown	Unknown	Unknown	Male	Yes	Yes	Yes	27	NW	A	Group	Flat	N/A	Marble	JOHN G PACEY SR	N/A	N/A	Good
Pacey	Lillian B.	Unknown	Unknown	Unknown	Female	Yes	Yes	Yes	27	NW	B	Group	Flat	N/A	Marble	LILLIAN B PACEY	N/A	N/A	Good
Peck	Elizabeth D.	Unknown	Unknown	Unknown	Female	Yes	Yes	Yes	Urn Garden A	N/A	H	Group	Pillow	N/A	Marble	ELIZABETH D. PECK	N/A	N/A	Good
Roblin	Unknown	Unknown	Unknown	Unknown	Unknown	No	Yes	No	Not Observed	Not Observed	Not Observed	Not Observed	N/A	N/A	N/A	N/A	N/A	N/A	N/A
Roman	M.	1869	Unknown	Unknown	Unknown	No	Yes	No	Not Observed	Not Observed	Not Observed	Not Observed	N/A	N/A	N/A	N/A	N/A	N/A	N/A
Unknown	Unknown	Unknown	Unknown	Unknown	Unknown	Yes	N/A	N/A	4	E	F	Broken or Non-Specific Monument	Monument	N/A	Concrete		CLARK	N/A	Poor. Upright feature is gone. Only the base remains at site.
Unknown	Unknown	Unknown	Unknown	Unknown	Unknown	Yes	N/A	N/A	4	W	D	Broken or Non-Specific Monument	Monument	N/A	Concrete	N/A	N/A	N/A	Poor. Upright feature is gone. Only the base remains at site.
Unknown	Unknown	Unknown	Unknown	Unknown	Unknown	Yes	N/A	N/A	6	SE	F	Broken or Non-Specific Monument	Monument	N/A	Concrete	N/A	N/A	N/A	Poor. Upright feature is gone. Only the base remains at site.
Unknown	Unknown	Unknown	Unknown	Unknown	Unknown	Yes	N/A	N/A	8	NE	D	Broken or Non-Specific Monument	Monument	N/A	Concrete	N/A	N/A	N/A	Poor. Upright feature is gone. Only the base remains at site.

Table A-1
Online Burial Records and On-Site Observations

Last Name	First Name	Birth Year	Death Year	Approximate Age at Death	Sex	Observed on Site March 2020	Listed on USGENWEB (2005)	Listed on FindaGrave	Block	Section	Plot	Monument Status	Monument Type	Shape (If Upright)	Material	Inscription Front	Inscription Base	Symbol(s)	Condition
Unknown	Unknown	Unknown	Unknown	Unknown	Unknown	Yes	N/A	N/A	10	SE	D	Broken or Non-Specific Monument	Monument (base only)	N/A	Concrete	UTZ	N/A	N/A	Poor. Upright feature is gone. Only the base remains at site.
Unknown	Unknown	Unknown	Unknown	Unknown	Unknown	Yes	N/A	N/A	20	N/A	A	Broken or Non-Specific Monument	N/A	N/A	N/A	N/A	N/A	N/A	N/A
Unknown	Unknown	Unknown	Unknown	Unknown	Unknown	Yes	N/A	N/A	21	W	A B	Broken or Non-Specific Monument	Monument	Square Top	Marble	(side 1) ROBLIN (side 2) DEWEY	N/A	Masonic Arms	Good
Unknown	Unknown	Unknown	Unknown	Unknown	Unknown	Yes	N/A	N/A	22	E	D	Broken or Non-Specific Monument	Monument (base only)	N/A	Concrete	N/A	N/A	N/A	Poor. Base only, headstone is gone.
Unknown	Unknown	Unknown	Unknown	Unknown	Unknown	Yes	N/A	N/A	22	W	B	Broken or Non-Specific Monument	Monument	Square Top	Concrete	N/A	CASSIL	Open Book, Dove	Good. Base chipped.
Unknown	Unknown	Unknown	Unknown	Unknown	Unknown	Yes	N/A	N/A	23	NE	F	Broken or Non-Specific Monument	Monument (base only)	N/A	Concrete	N/A	N/A	N/A	Poor. Base only, headstone is gone.
Unknown	Unknown	Unknown	Unknown	Unknown	Unknown	Yes	N/A	N/A	24	SW	A	Broken or Non-Specific Monument	Monument (base only)	N/A	Concrete	N/A	N/A	N/A	Poor. Base only, headstone is gone.
Unknown	Unknown	Unknown	Unknown	Unknown	Unknown	Yes	N/A	N/A	27	NE	J	Individual	Flat	N/A	Granite	(illegible)	N/A	N/A	Poor. Text on face faded/eroded off completely.
Unknown	Unknown	Unknown	Unknown	Unknown	Unknown	Yes	N/A	N/A	27	NW	F	Individual	Flat	N/A	Concrete	(illegible)	N/A	N/A	Poor. Text on face faded/eroded off completely.
Unknown	Unknown	Unknown	Unknown	Unknown	Unknown	Yes	N/A	N/A	28	SW	A	Individual	Flat	N/A	Concrete	BHR	N/A	N/A	Fair. Faded
Unknown	Unknown	1889	Unknown	Unknown	Unknown	Yes	N/A	N/A	28	SW	B	Individual	Flat	N/A	Concrete	-- BORN -- 18 1889	N/A	N/A	Poor. Extremely faded.
Unknown	Unknown	Unknown	Unknown	Unknown	Unknown	Yes	N/A	N/A	30	W	A	Broken or Non-Specific Monument	Monument (base only)	N/A	Concrete	N/A	N/A	N/A	Poor. Base only, headstone is gone.
Unknown	Unknown	Unknown	Unknown	Unknown	Unknown	Yes	N/A	N/A	32	SE	E	Broken or Non-Specific Monument	Monument	Square Top	Concrete with cobble	(none left)	N/A	N/A	Poor. Plaque removed, no inscription remains. Face cracked and broken.
Unknown	Unknown	Unknown	Unknown	Unknown	Unknown	Yes	N/A	N/A	40	NE	A	Broken or Non-Specific Monument	Flat	N/A	Concrete	(no text)	N/A	N/A	N/A
Unknown	Unknown	Unknown	Unknown	Unknown	Unknown	Yes	N/A	N/A	43	SW	A	Broken or Non-Specific Monument	Monument (base only)	N/A	Concrete	N/A	N/A	N/A	Poor. Base only, headstone is gone.
Unknown	Unknown	Unknown	Unknown	Unknown	Unknown	Yes	N/A	N/A	43	SW	B	Broken or Non-Specific Monument	Monument (base only)	N/A	Concrete	N/A	N/A	N/A	Poor. Base only, headstone is gone.
Unknown	Unknown	Unknown	Unknown	Unknown	Unknown	Yes	N/A	N/A	43	SW	C	Broken or Non-Specific Monument	Monument (base only)	N/A	Concrete	N/A	N/A	N/A	Poor. Base only, headstone is gone.
Unknown	Unknown	Unknown	Unknown	Unknown	Unknown	Yes	N/A	N/A	46	SW	D	Broken or Non-Specific Monument	Monument (base only)	N/A	N/A	N/A	N/A	N/A	Poor. Base only, headstone is gone.
Unknown	Unknown	Unknown	Unknown	Unknown	Unknown	Yes	N/A	N/A	49	W	B	Broken or Non-Specific Monument	Monument	Square Top	Concrete	N/A	MARTIN	Open Book, Dove	Good
Unknown	Unknown	Unknown	Unknown	Unknown	Unknown	Yes	N/A	N/A	53	NE	E	Broken or Non-Specific Monument	Monument	Square Top	Concrete	ST. JOHN	N/A	N/A	Good

Table A-1
Online Burial Records and On-Site Observations

Last Name	First Name	Birth Year	Death Year	Approximate Age at Death	Sex	Observed on Site March 2020	Listed on USGENWEB (2005)	Listed on FindaGrave	Block	Section	Plot	Monument Status	Monument Type	Shape (If Upright)	Material	Inscription Front	Inscription Base	Symbol(s)	Condition
Unknown	Unknown	Unknown	Unknown	Unknown	Unknown	Yes	N/A	N/A	55	NE	F	Broken or Non-Specific Monument	Monument	Square Top	Concrete	N/A	N/A	N/A	Poor. Base is broken and monument is gone.
Unknown	Unknown	Unknown	Unknown	Unknown	Unknown	Yes	N/A	N/A	56	W	E	Individual	Monument	Square Top	Concrete	B.V.A.	N/A	N/A	Poor. Broken face separated from base.
Unknown	Unknown	Unknown	Unknown	Unknown	Unknown	Yes	N/A	N/A	57	W	A	Broken or Non-Specific Monument	Monument (base only)	N/A	Concrete	N/A	N/A	N/A	Poor. Base only, headstone is gone.
Utz	Christian Henry	1887	Unknown	Unknown	Male	No	No	Yes	Not Observed	Not Observed	Not Observed	Not Observed	N/A	N/A	N/A	N/A	N/A	N/A	N/A

Table A-2
Monumented Plots by Block and Section

Block	Section	Monumented Plots	Block	Section	Monumented Plots
1	NW	0	30	E	2
1	NE	3	30	W	2
1	SW	1	31	NW	0
1	SE	1	31	NE	2
2	E	2	31	SW	0
2	W	3	31	SE	0
3	None	0	32	NW	0
4	E	2	32	NE	1
4	W	5	32	SW	4
5	NW	1	32	SE	3
5	NE	2	33	None	0
5	SW	0	34	None	0
5	SE	0	35	E	3
6	NW	2	35	W	0
6	NE	0	36	E	0
6	SW	0	36	W	4
6	SE	4	37	NW	2
7	None	2	37	NE	0
8	NW	2	37	SW	0
8	NE	2	37	SE	5
8	SW	0	38	NW	0
8	SE	1	38	NE	1
9	NW	1	38	SW	0
9	NE	2	38	SE	0
9	SW	0	39	None	0
9	SE	1	40	NW	0
10	NW	2	40	NE	1
10	NE	0	40	SW	0
10	SW	1	40	SE	0
10	SE	1	41	Not mapped	N/A
11	NW	0	42	Not mapped	N/A
11	NE	0	43	NW	0
11	SW	2	43	NE	0
11	SE	0	43	SW	3
12	NW	4	43	SE	3
12	NE	2	44	E	3
12	SW	2	44	W	0
12	SE	0	45	E	3
13	NW	0	45	W	0
13	NE	0	46	NW	3
13	SW	1	46	NE	4
13	SE	0	46	SW	4
14	NW	1	46	SE	1
14	NE	0	47	NW	0
14	SW	0	47	NE	1
14	SE	0	47	SW	3
15	E	1	47	SE	0
15	W	0	48	NW	1
16	E	1	48	NE	1
16	W	2	48	SW	0
17	E	0	48	SE	0
17	W	2	49	W	3
18	None	0	49	C	3
19	None	0	49	E	2
20	None	1	50	W	4
21	E	0	50	C	4
21	W	2	50	E	1
22	E	3	51	E	3
22	W	3	51	W	5
23	NW	0	52	NW	2
23	NE	1	52	NE	2
23	SW	1	52	SW	2
23	SE	4	52	SE	2
24	NW	3	53	NW	1
24	NE	2	53	NE	3
24	SW	3	53	SW	1
24	SE	0	53	SE	1
25	NW	0	54	NW	0
25	NE	0	54	NE	0
25	SW	2	54	SW	3
25	SE	2	54	SE	0
26	None	0	55	NW	0
27	NW	6	55	NE	2
27	NE	3	55	SW	1
27	SW	0	55	SE	3
27	SE	1	56	E	3
28	NW	2	56	W	5
28	NE	0	57	E	3
28	SW	2	57	W	1
28	SE	1	Urn Garden A	None	13
29	NW	2	Urn Garden B	None	4
29	NE	3		Total	246
29	SW	0			
29	SE	3			

Table A-3
Monumented Plots and GPR Anomalies by Block

Block	Monumented Plots	GPR Anomalies
1	5	9
2	5	6
3	0	5
4	7	13
5	3	4
6	6	8
7	2	5
8	5	5
9	4	8
10	4	7
11	2	4
12	8	11
13	1	4
14	1	4
15	1	5
16	3	4
17	2	2
18	0	0
19	0	0
20	1	2
21	2	6
22	6	10
23	6	12
24	8	9
25	4	5
26	0	2
27	10	5
28	5	4
29	8	10
30	4	5
31	2	7
32	8	4
33	0	4
34	0	0
35	3	5
36	4	8
37	7	10
38	1	5
39	0	1
40	1	4
43	6	6
44	3	5
45	3	6
46	12	12
47	4	5
48	2	5
49	8	10
50	9	8
51	8	11
52	8	10
53	6	7
54	3	3
55	6	9
56	8	10
57	4	6
<i>Urn G. A</i>	<i>13</i>	<i>11</i>
Urn G. B	4	5
Outside Marked Block		15
Total Anomalies		366

Notes:

Bold: more anomalies than monumented plots

Italics: more monumented plots than anomalies

GPR: ground-penetrating radar

Appendix B

Hillgrove Cemetery Inventory Maps

Schematic Inventory Map

Survey Map

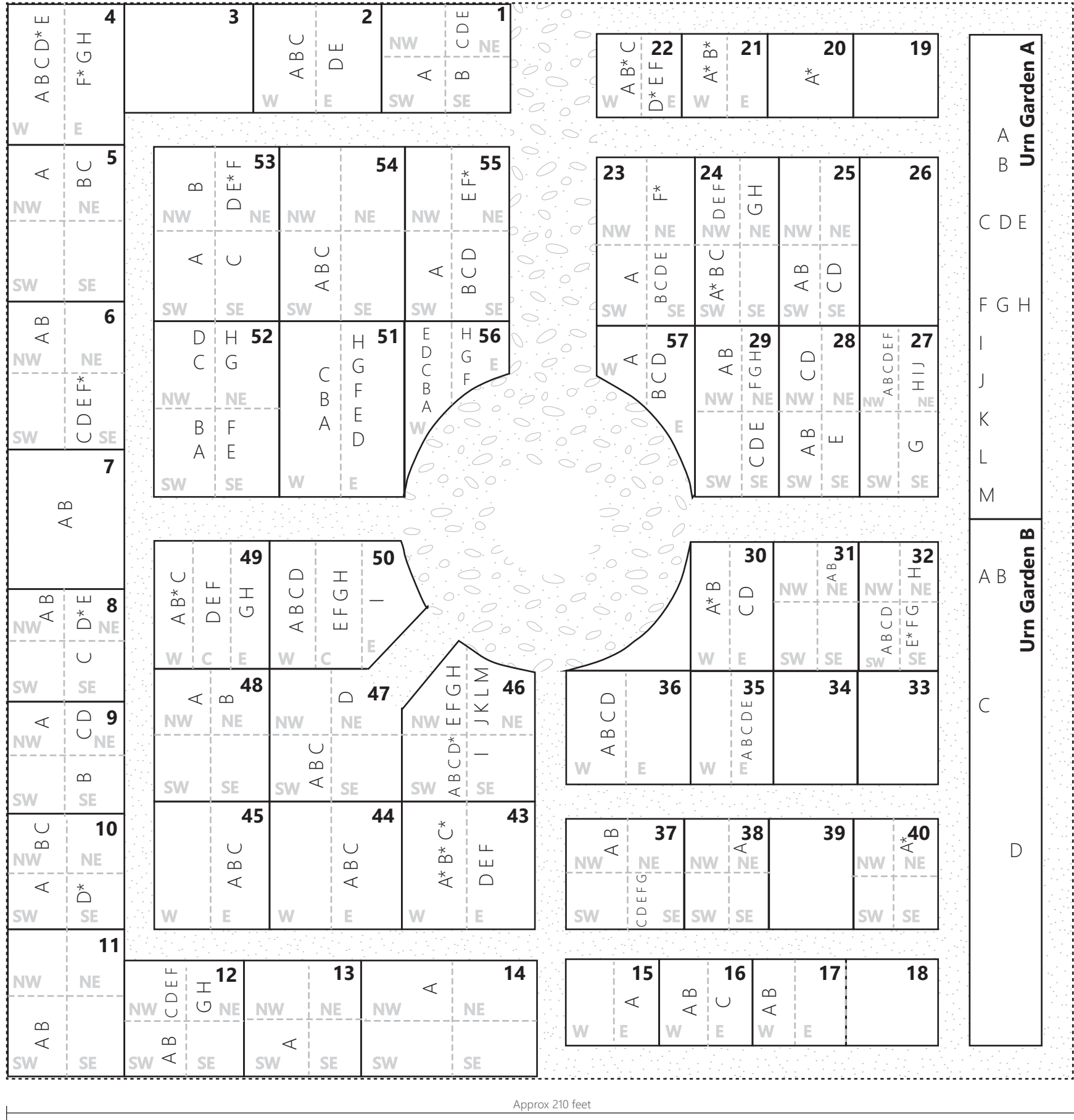
Photographed Map (Undated)

HILLGROVE CEMETERY

SeaTac, Washington

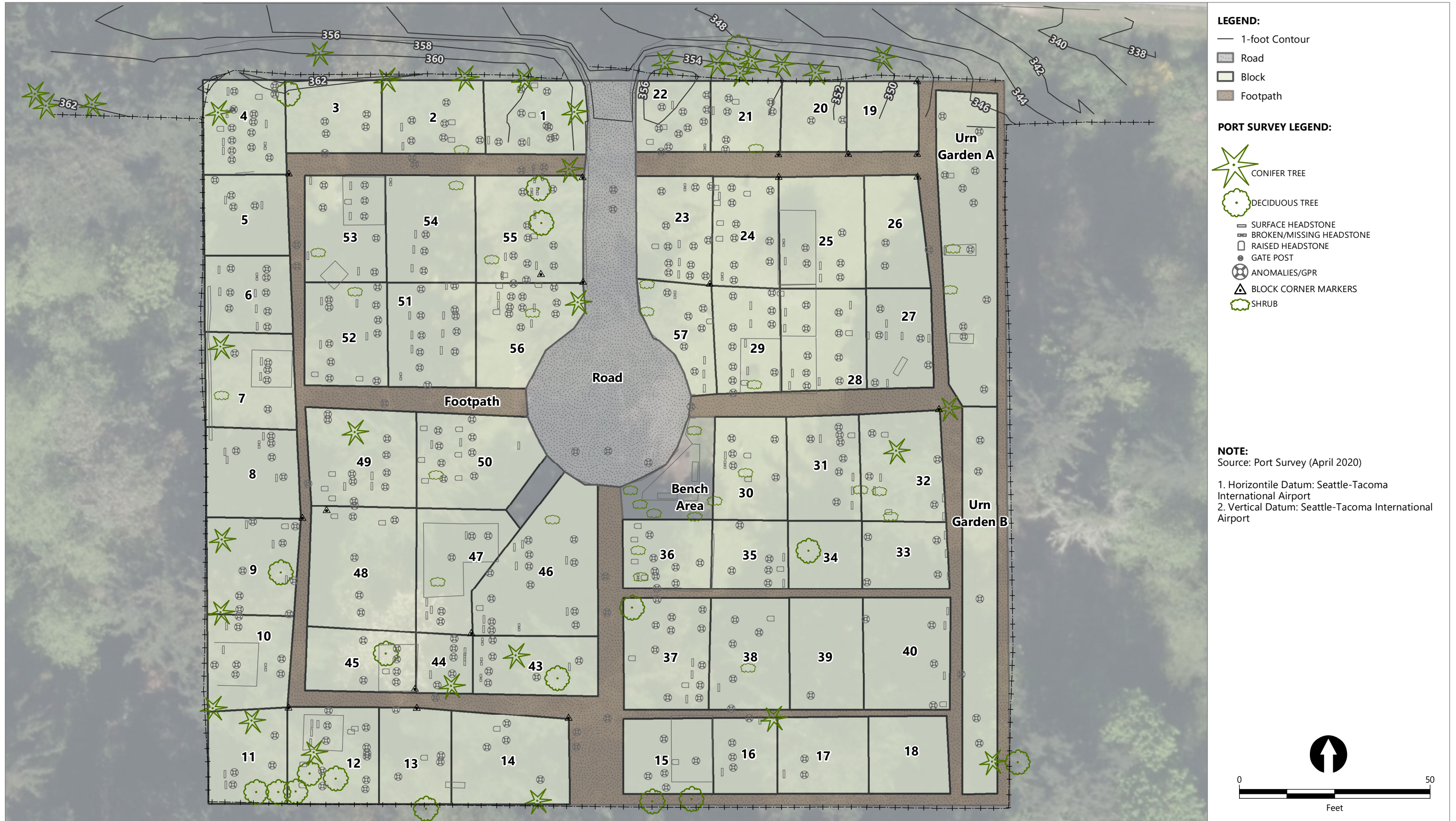
Schematic Inventory Map

Inventory Date: March 2020



- Fence
- Road
- Footpath
- Block
- Section
- A Plot - Individual Listed on Monument
- A* Plot - Monument Broken, Illegible, or Non-Specific

Notes:
 1. Block numbers based on undated photographed cemetery map found on findagrave.com.
 2. Section labels reference cardinal directions, except for C = central.
 3. Plot locations are not exact but are shown relative to each other within a section.
 4. Non-specific monuments are those that only have a family name; it is unclear whether these mark a family plot or an individual burial.



Publish Date: 2020/04/30, 4:27 PM | User: adowell
 Filepath: \\orcas\gis\Jobs\PortofSeattle_0003\SD23_Reg_Memo_and_Implementation\Maps\Hillgrove_Cemetery\AQ_Hillgrove_Cemetery_Block_Overview.mxd





Source: Find a Grave, 2020. "Hillgrove Cemetery." Findagrave.com. Accessed April 2020. Available at: <https://www.findagrave.com/memorial/5224239/charles-h-schnoor#view-photo=147114072>