

South King County Fund Update Highline Forum

Andy Gregory, Sr. Program Manager Environmental Engagement
September 22, 2021



Overview

- South King County Fund (SKCF) launched in 2019
- Environmental, Economic Recovery, WMBE Programs
- 2020- total of \$1.5 Million
- 2021- Total of \$2 Million
- Goal: to develop equity-based partnerships in South King County



2020 Funding Highlights

- Economic Recovery- 10 projects total of \$981,881
- Environmental- 14 projects total of \$217,000
- WMBE support- 3 programs total of \$250,000



Fund Highlights Economic Recovery

- African Chamber of Commerce – Helping with Clean Truck Program
- Businesses Ending Slavery and Trafficking - Providing employment readiness training and support
- Puget Sound Welcome Back Center – Preparing international engineers for jobs in construction



Fund Highlights Environmental Grants



- Federal Way Korean American Association- Hanwoori Garden
- Partner in Employment- Youth Led Park Restoration and Community Cleanup
- Bhutanese Community Resource Center- Engaging and empowering Bhutanese community to local public spaces

Fund Highlights- WMBE Support

- Advanced Port Gen Workshops
- Port Gen Accelerator
- Highline College Partnerships



Current Opportunity: Economic Recovery



- Application Open September 13 – October 25
- A total of \$1.5M is budgeted for the Economic Recovery Program
- New this year: **Multi-year contracts** are available for up to \$250k for up to 3 years
- Funded project must **benefit Port-related industries** and activities in the following focus areas:
 - Small Business Assistance
 - Workforce Development
 - Job Creation
 - Development of New, Innovative Economic Recovery Strategies

Current Opportunity- Environmental Grants

- Applications open through October 15!
- Grants up to \$20,000/year up to 3 years.
- Require public improvement
- 3:1 match
- Info Sessions 9/25 and 8/5



Public Partnerships

- Public land partners are critical to the success of the Environmental Grants Program
- Opportunities to invest in City/School property
- Requires staff coordination
- Plans for 2022 to develop a regional strategy through a set of meetings



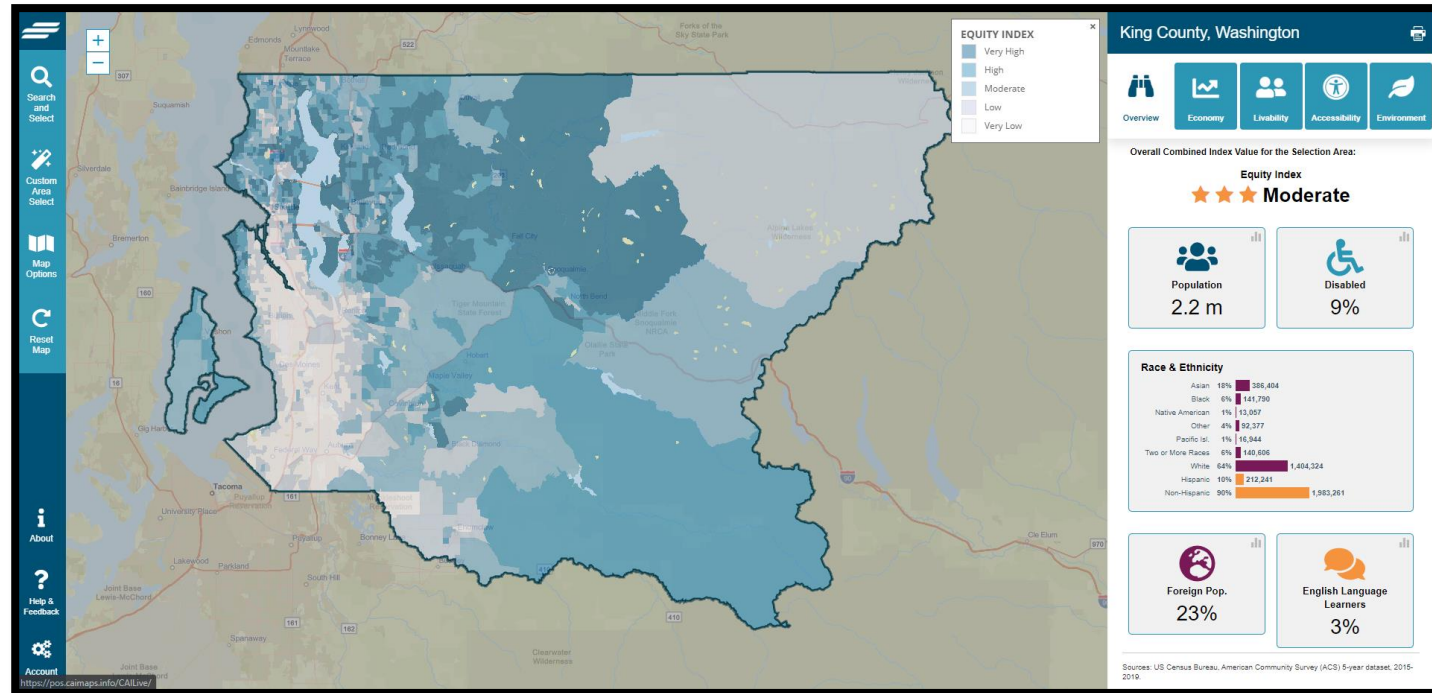
Community Capacity Building

- Building SKC based grassroots nonprofit capacity
- Empowering BIPOC-led nonprofits and community groups
- Deepening Port Community Liaison program
- Supporting community grant reviewers



Port Equity Index

- The Equity Index was created as a tool for the Port to understand the variations that exist within the region and use that information to direct resources towards the areas of greatest need.
- The Equity Index consists of 21 indicators within each of these four categories.
- The indicators examine variations in pollution, access to economic opportunity, and a healthy standard of living across King County.
- Each category aligns with the Century Agenda.



Questions?

