



South 200th Link Extension Briefing



City of SeaTac
everywhere's possible

SeaTac City Council Briefing March 25, 2014

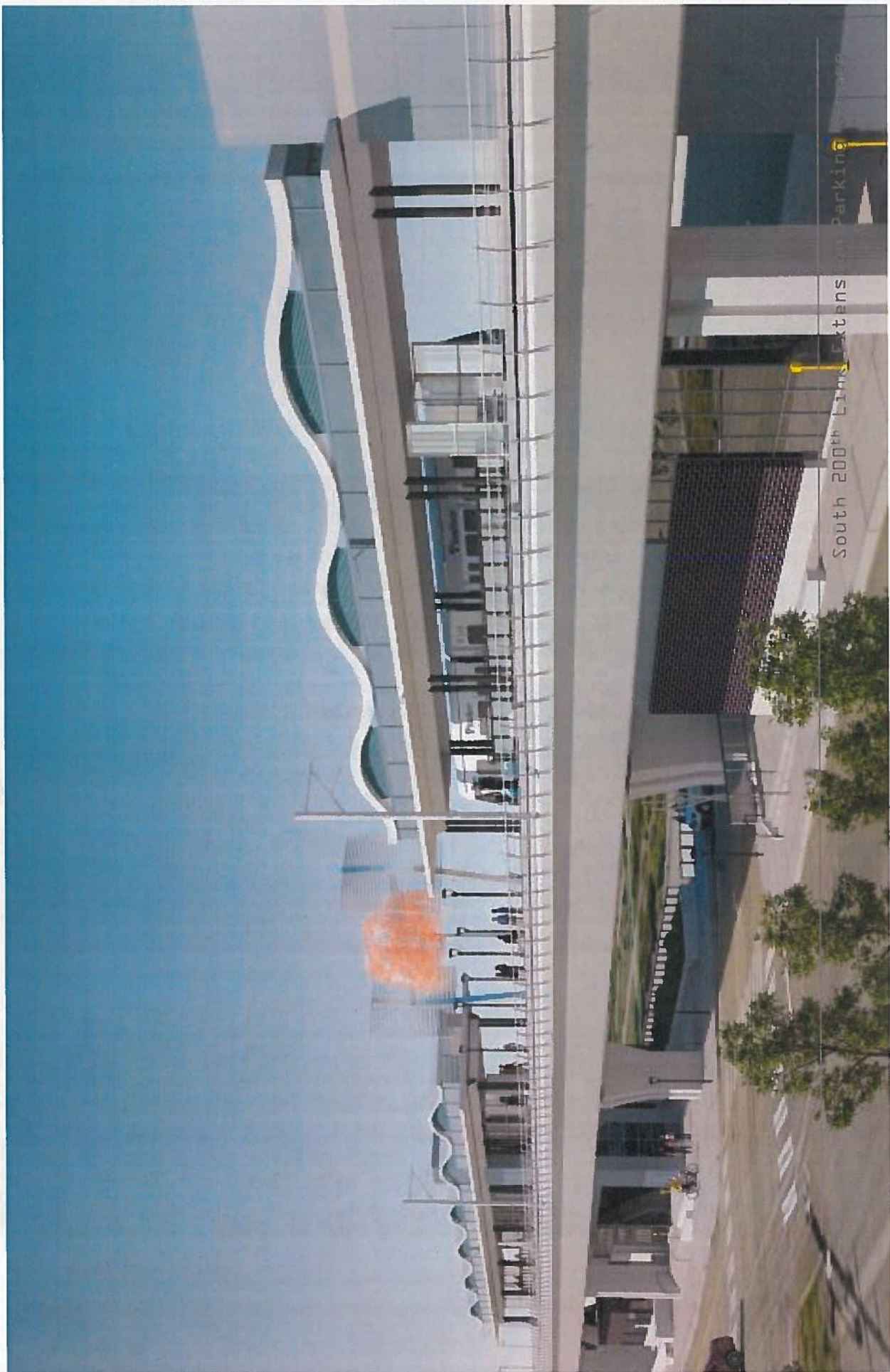




- 1.6 mile extension of Central Link:
 - Elevated Guideway and Station
 - Parking Garage
- Schedule:
 - Final Design: 2013
 - Construction: 2013-2016
 - System testing: 6 months
 - Open for service: Fall 2016*

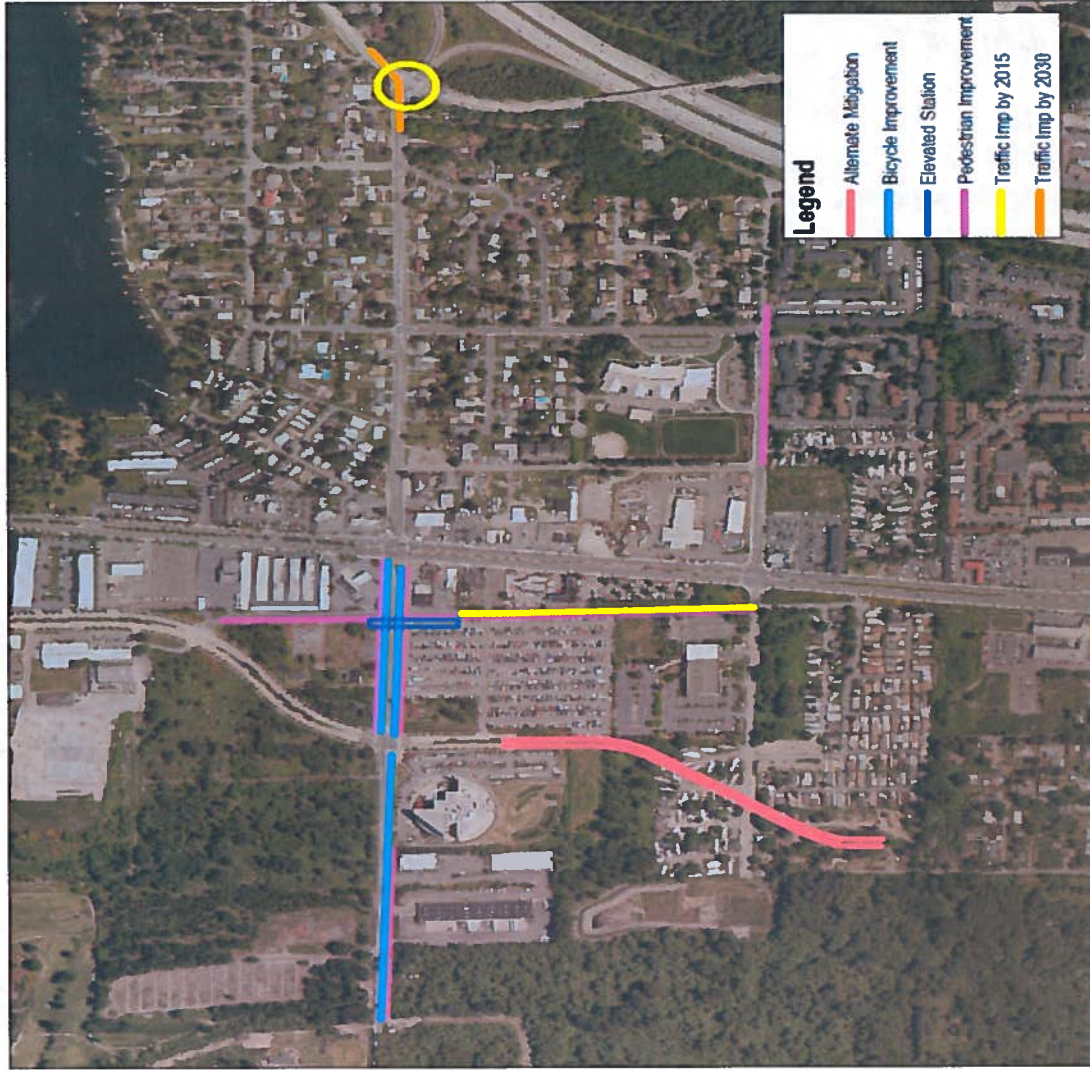
*Includes 5 months of float
- Project budget: \$383.2M

Angle Lake Station looking SW



South 200th Transit Station Parking

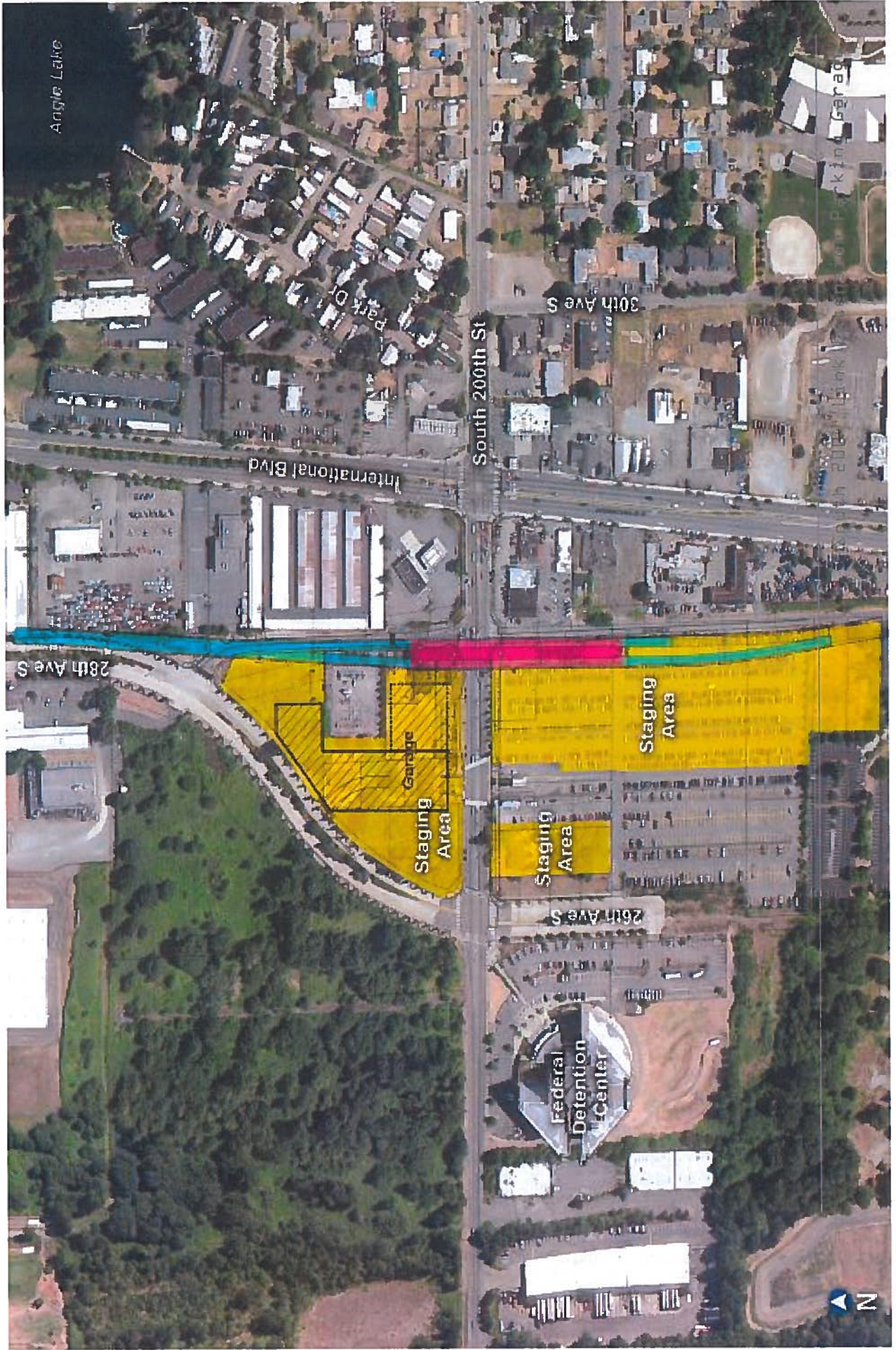
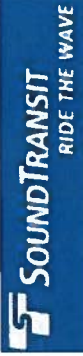
Infrastructure Improvement





- ✓ Maximize parking stall count within the available budget.
- ✓ Meet the other program requirements for plaza, retail and site improvements.
- ✓ Produce a project which, at minimum, meets the level of quality of Sound Transit's Lakewood and Issaquah parking facilities.
- ✓ Maximize the potential for successful future transit-oriented development.
- ✓ Maximize aesthetics, sustainability, SBE/DBE participation, positive labor relations, safety and quality.

Station Area Site Plan





█ Complete
█ Active
█ Pending

- ✓ ISSUE RFQ May 2013
- ✓ Received SOQ's June 2013
- ✓ Shortlist Finalists July 2013
- ✓ Issue RFP Aug. 2013
- ✓ Receive Proposals Oct. 2013
- ✓ Evaluation/Selection Nov. 2013
- ✓ Complete Negotiations/Concept Validation Jan. 2014
- ✓ Board Action to Award Contract Feb. 2014
- ✓ Issue NTP/Start Final Design Mar. 2014
- Start Construction Oct. 2014
- Parking Garage Substantial Completion Dec. 2015



- ✓ 1,050-stall parking garage.
- ✓ Plaza/drop-off area.
- ✓ Retail space structure for future lease, with associated restrooms and parking as required by the project's development agreement with the City of SeaTac.
- ✓ Approximately 35,000 square feet of the project site to be held for future transit-oriented development (TOD).



South 200th Link
Extension Parking Garage
City of SeaTac
Sound Transit



- John Welch, Project Manager, Harbor Pacific Graham
- Bob Griebenow, Design Manager, BergerABAM
- Larry Scarpa, Project Architect, Brooks + Scarpa
- Blair Howe, Real Estate Development, Kidder Matthews
- Greg Schmidt, Construction Manager, Harbor Pacific Graham
- Phillip Adams, Design Quality Manager, System Consulting
- Jeff Mercer, Construction Quality Manager, Krazan & Associates



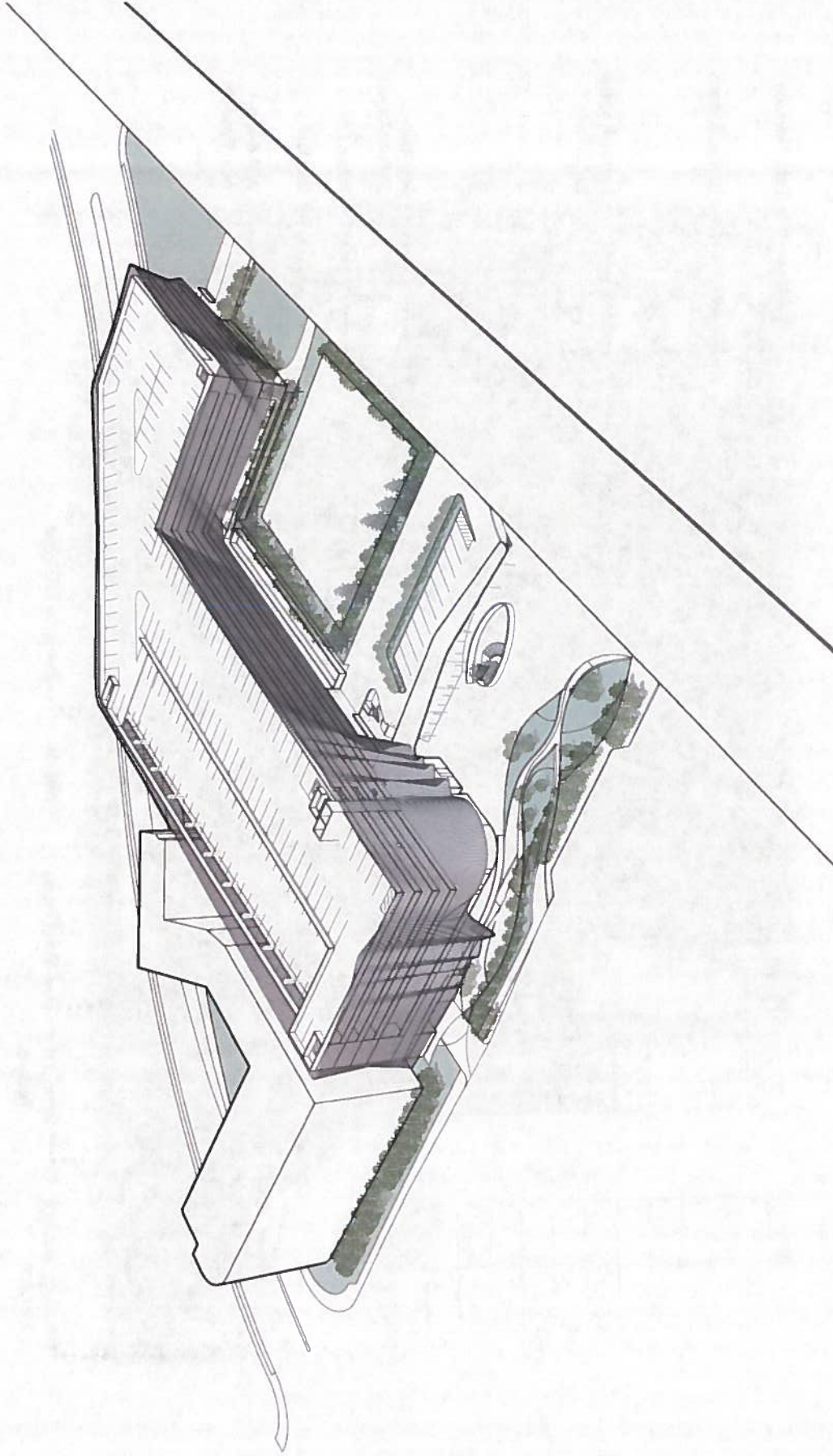
Site Plan



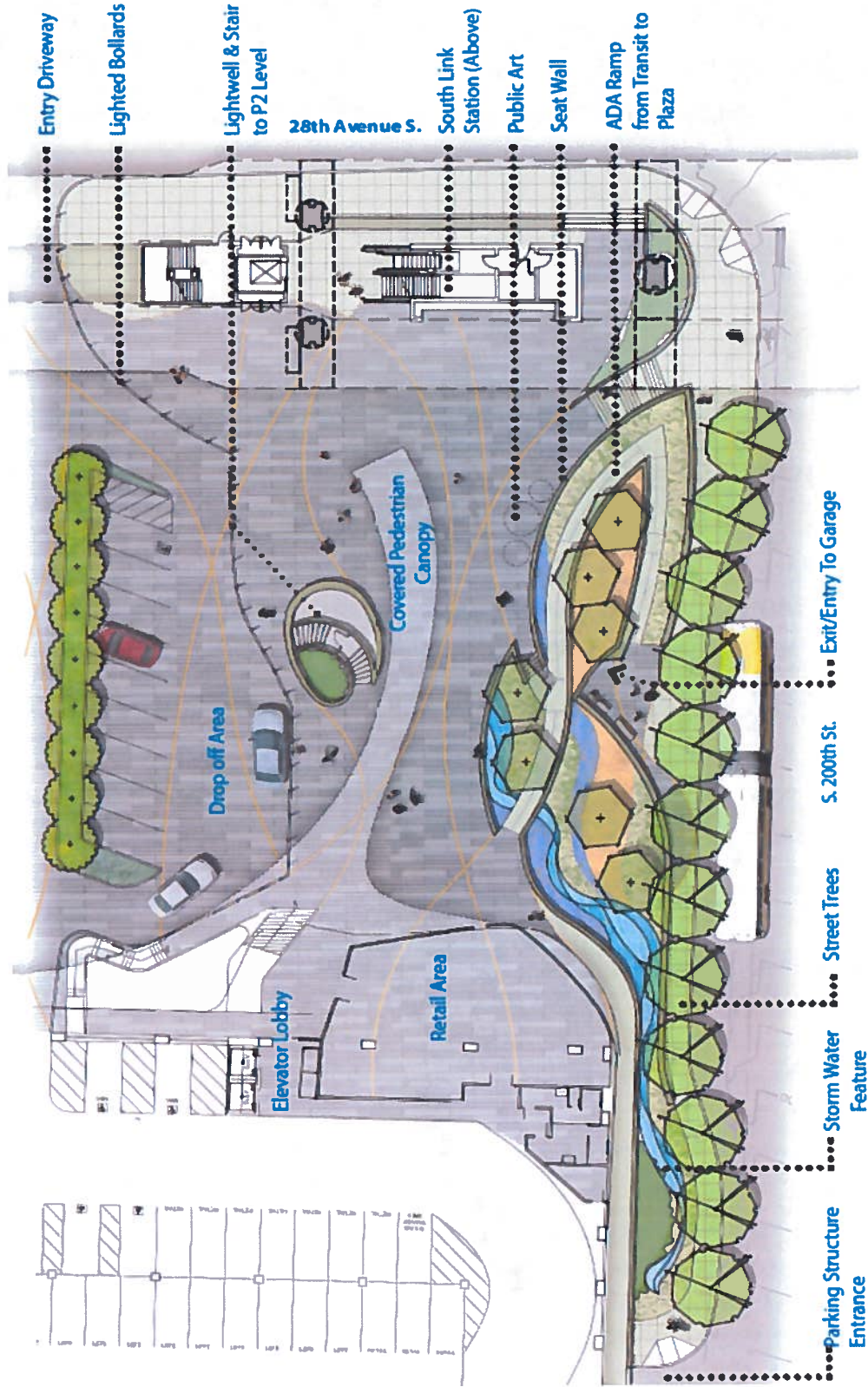
South 200th Link Extension Parking Garage



Plan Level 3 - Parking Garage



Plaza Detail Plan



Plaza detail design

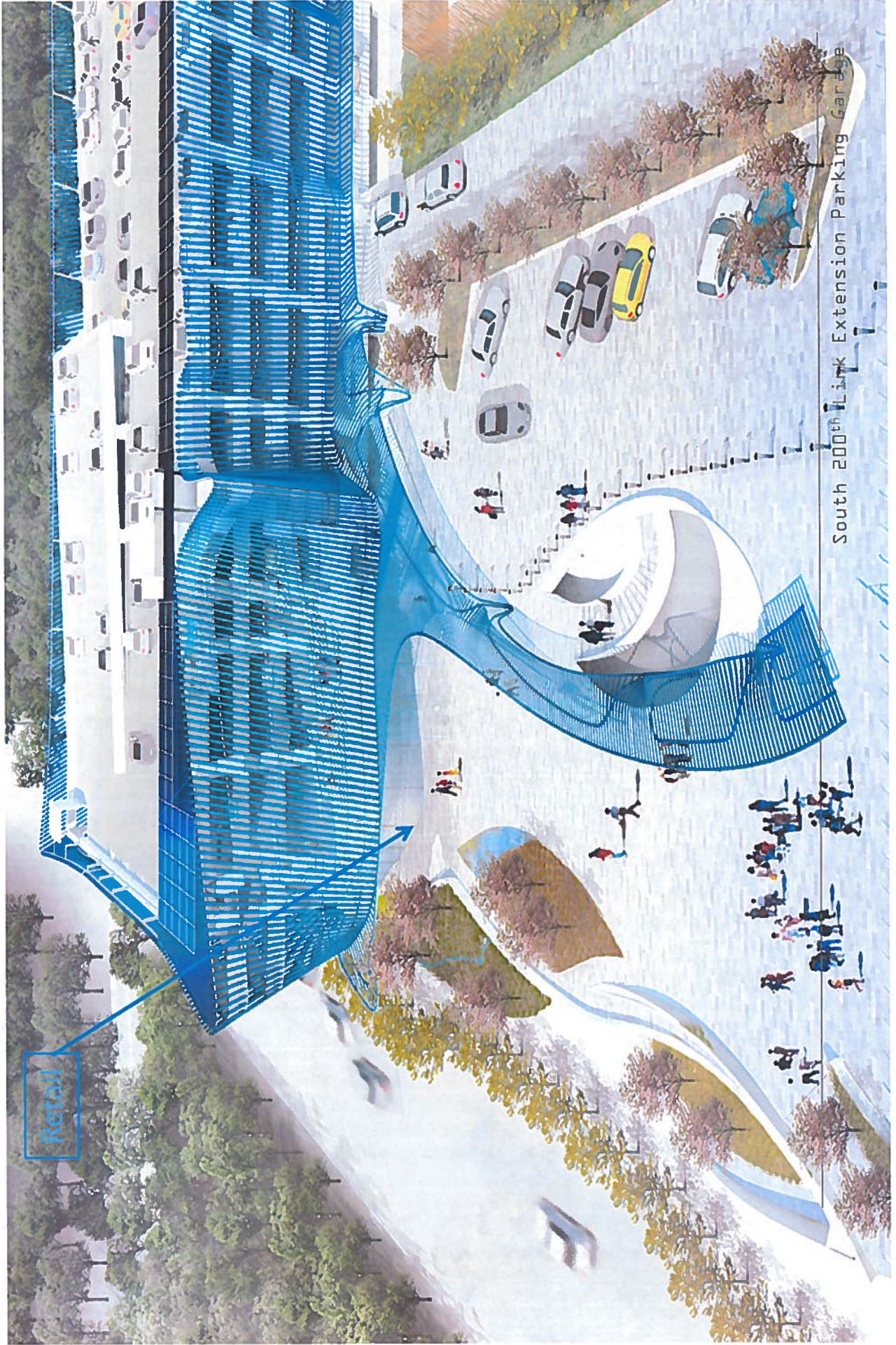
Plaza View - Garage, Retail and Canopy



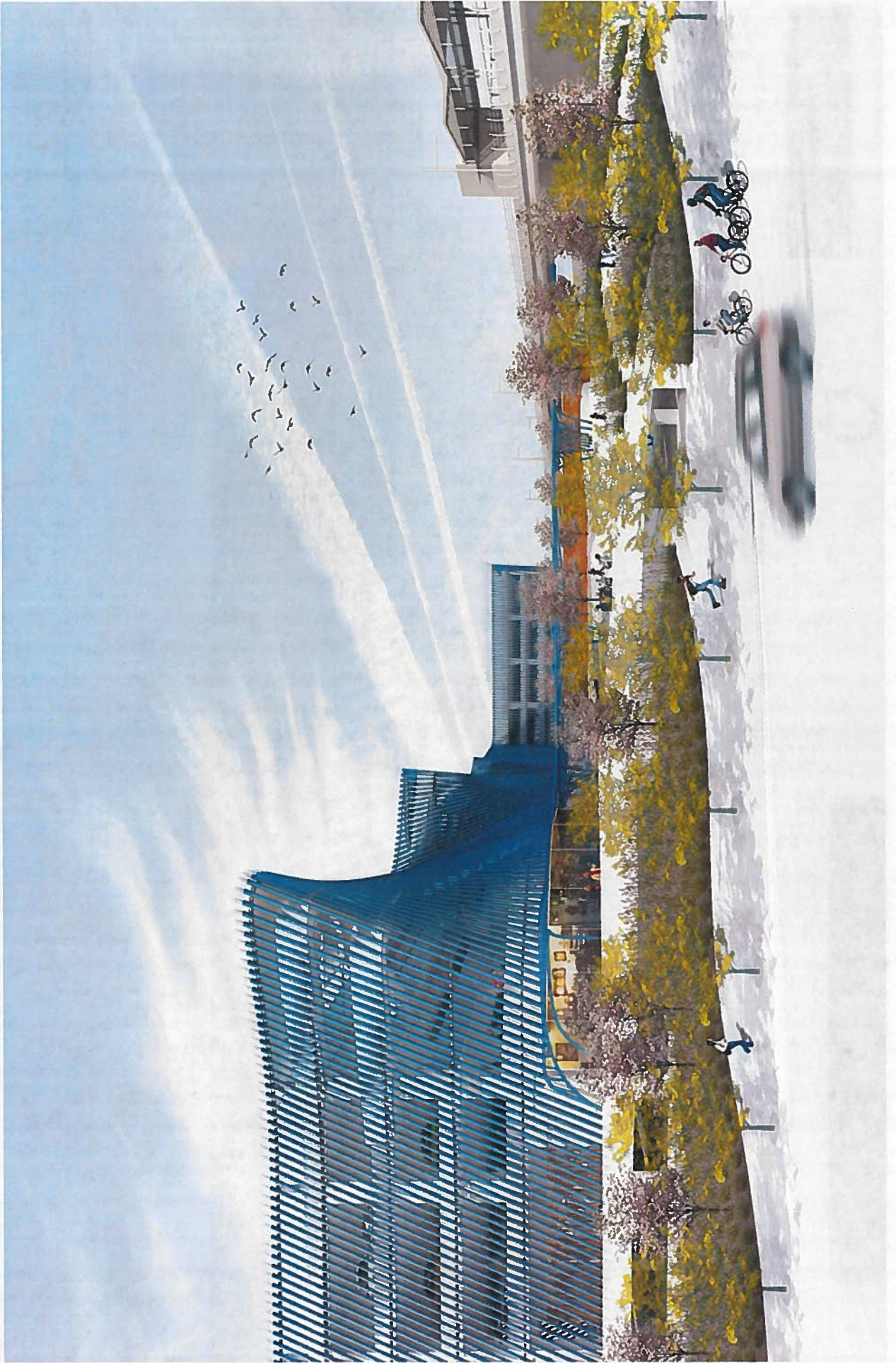
Retail

South 200th Link Extension Parking Garage

Plaza Overview



View from S. 200th



Close Up from S. 200th



South 200th Link Extension Parking Garage

Grand Stair Leading to Plaza



South 200th Link Extension Parking Garage

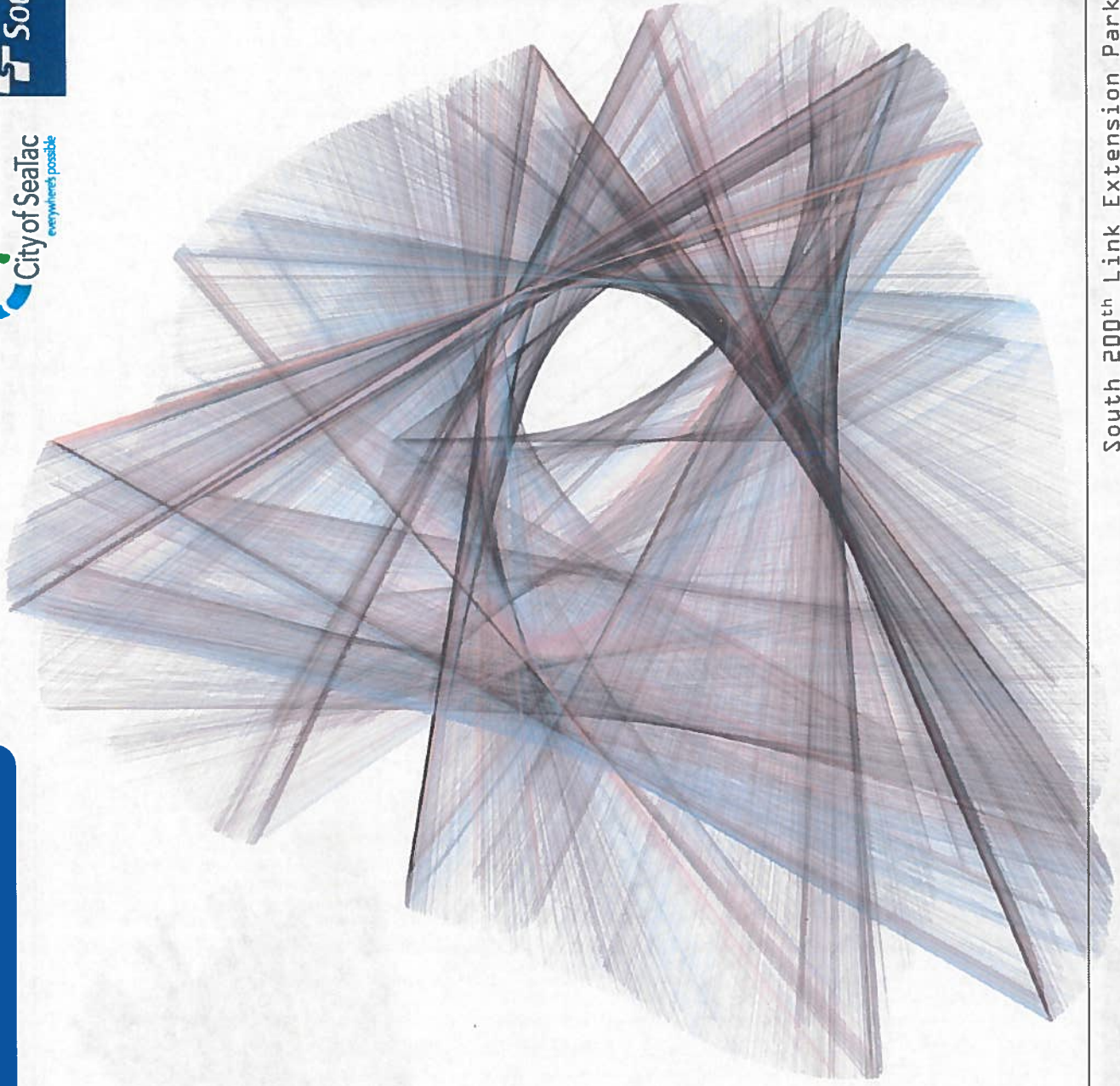
S. 200th Connection

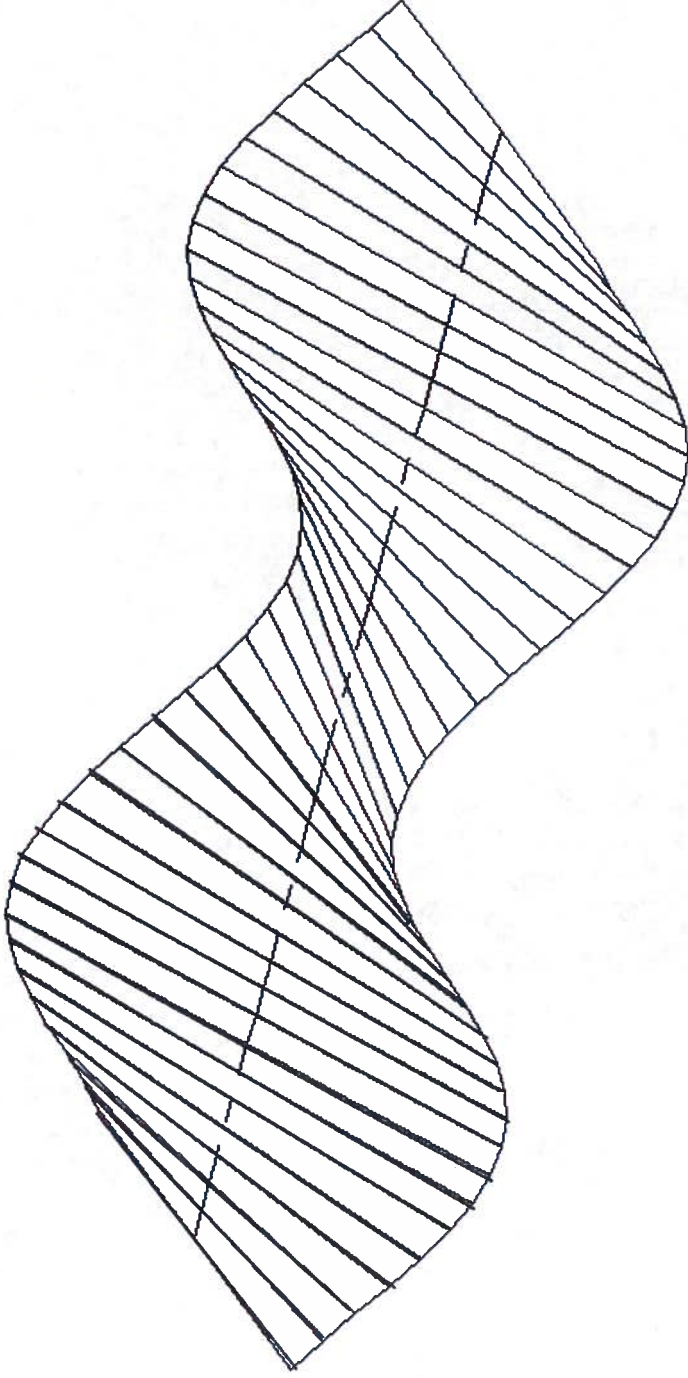


Council Chosen Theme - Environment
in Motion



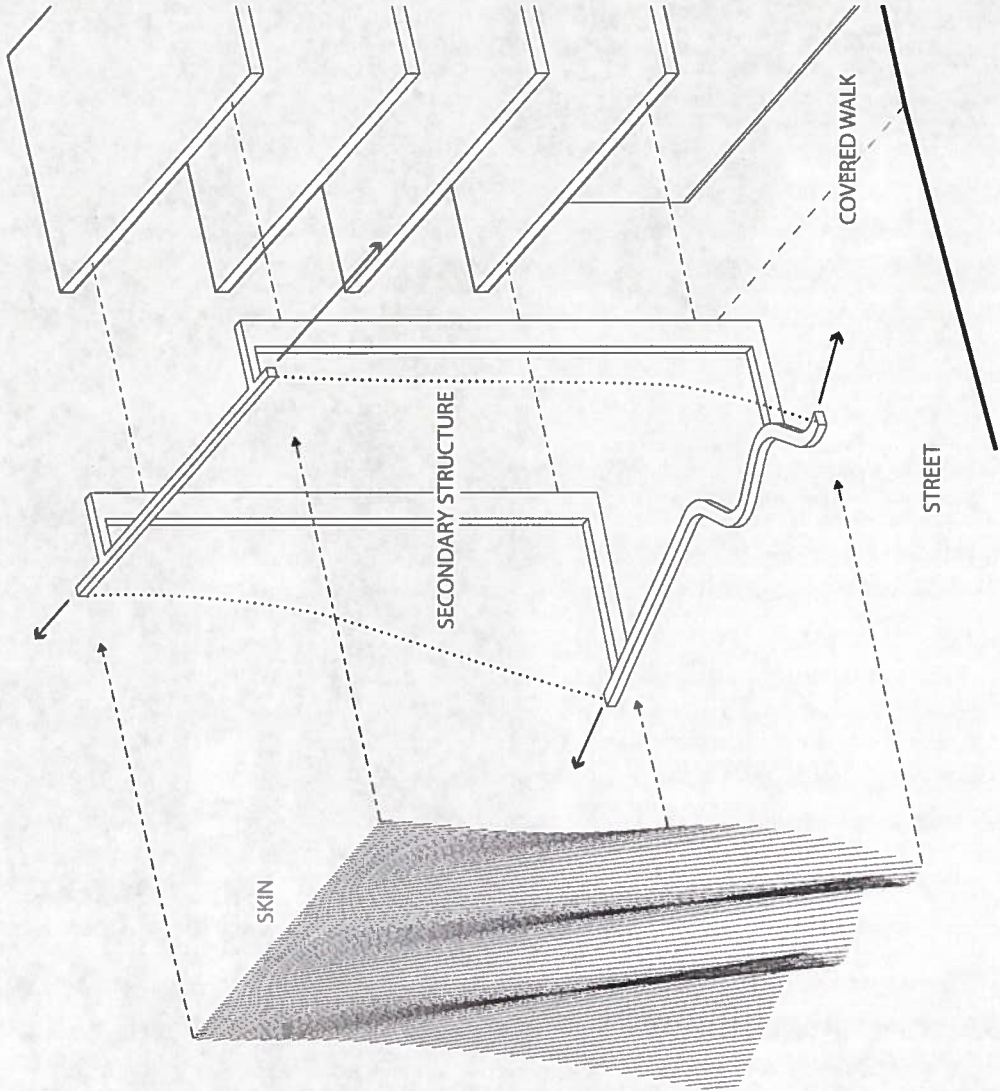
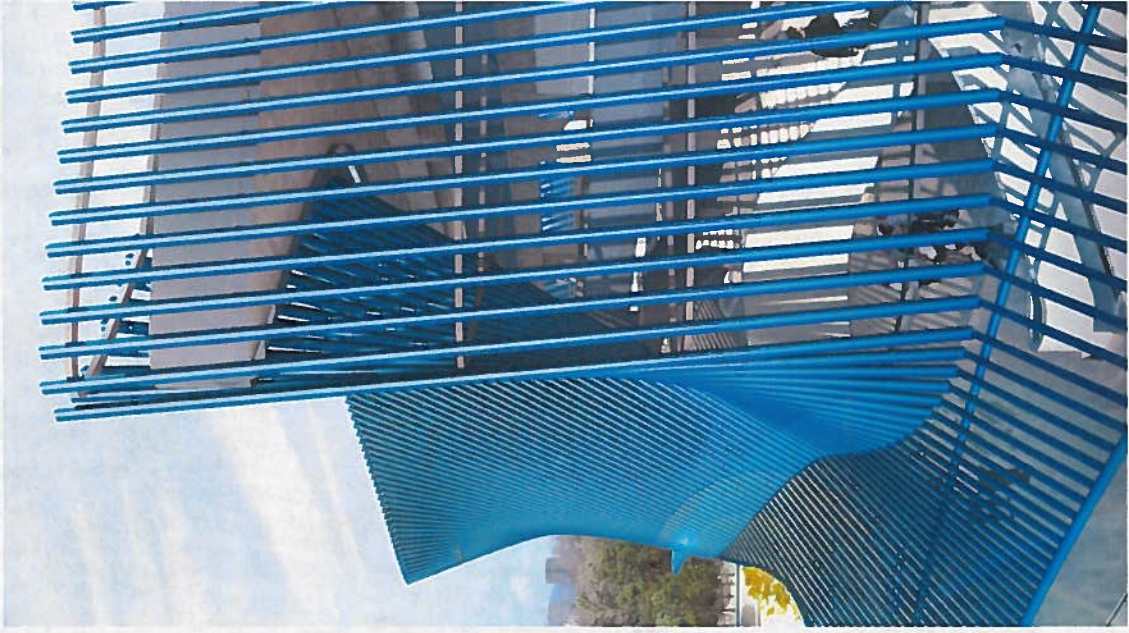
Concept - ENVIRONMENT IN MOTION





Ruled Surfacing

Concept - ENVIRONMENT IN MOTION



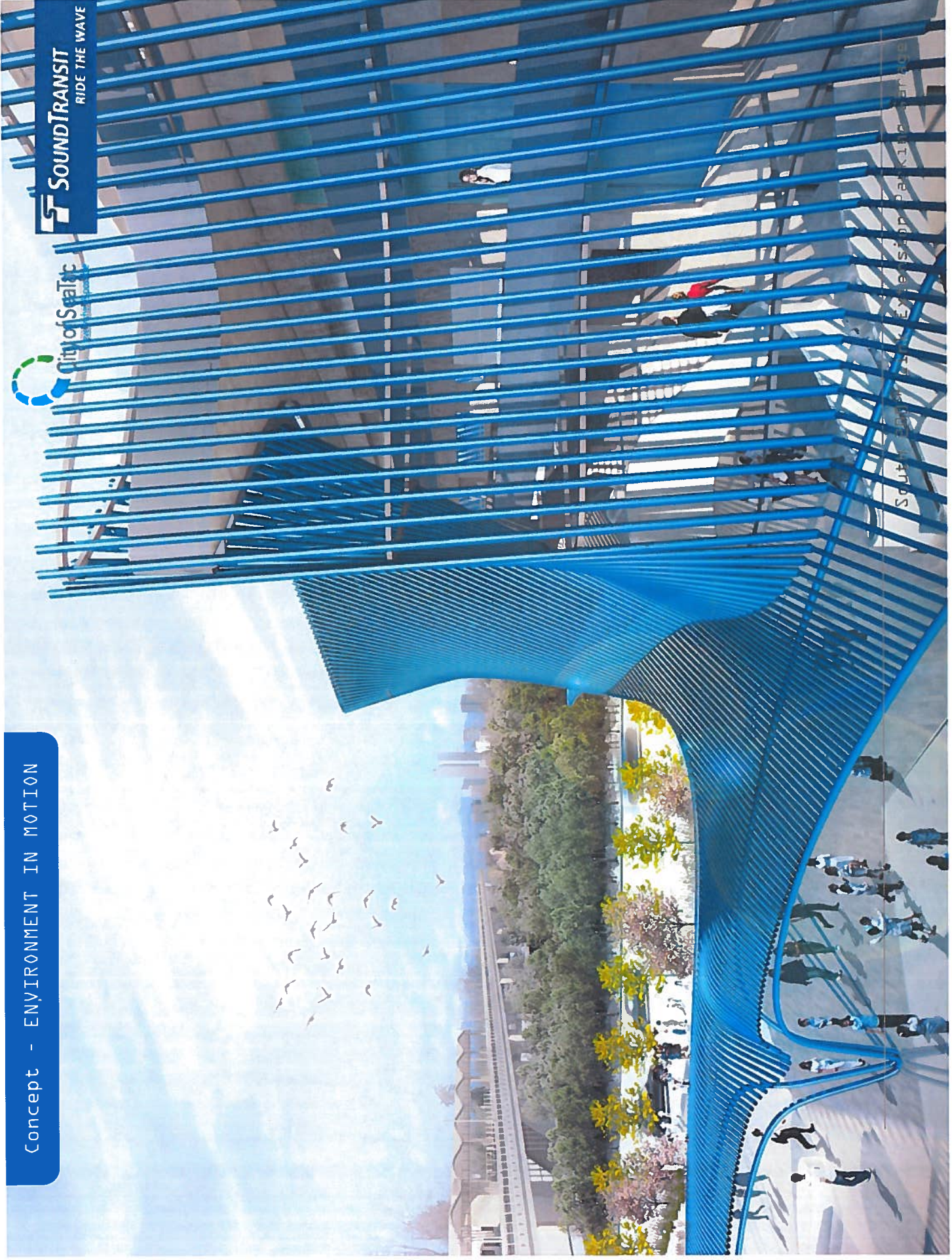
South 200th Link Extension Parking Garage

Concept - ENVIRONMENT IN MOTION



SOUNDTRANSIT
RIDE THE WAVE

SOUNDTRANSIT EXHIBITION SPACE

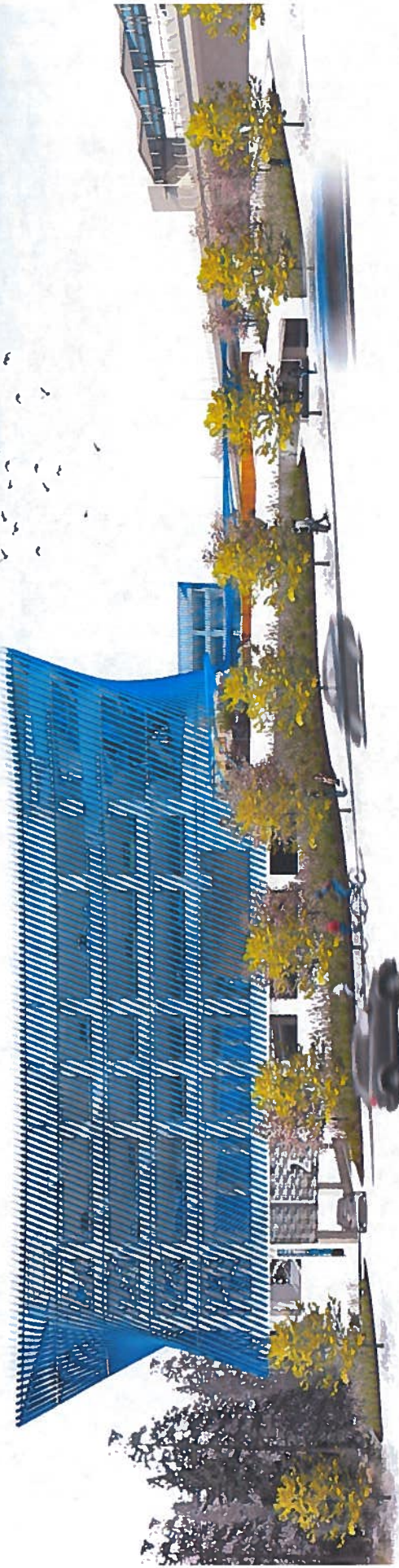


Façade Concept - IN MOTION



South 200th Link Extension Parking Garage

South Elevation along S. 200th



South 200th Link Extension Parking Garage

North Side



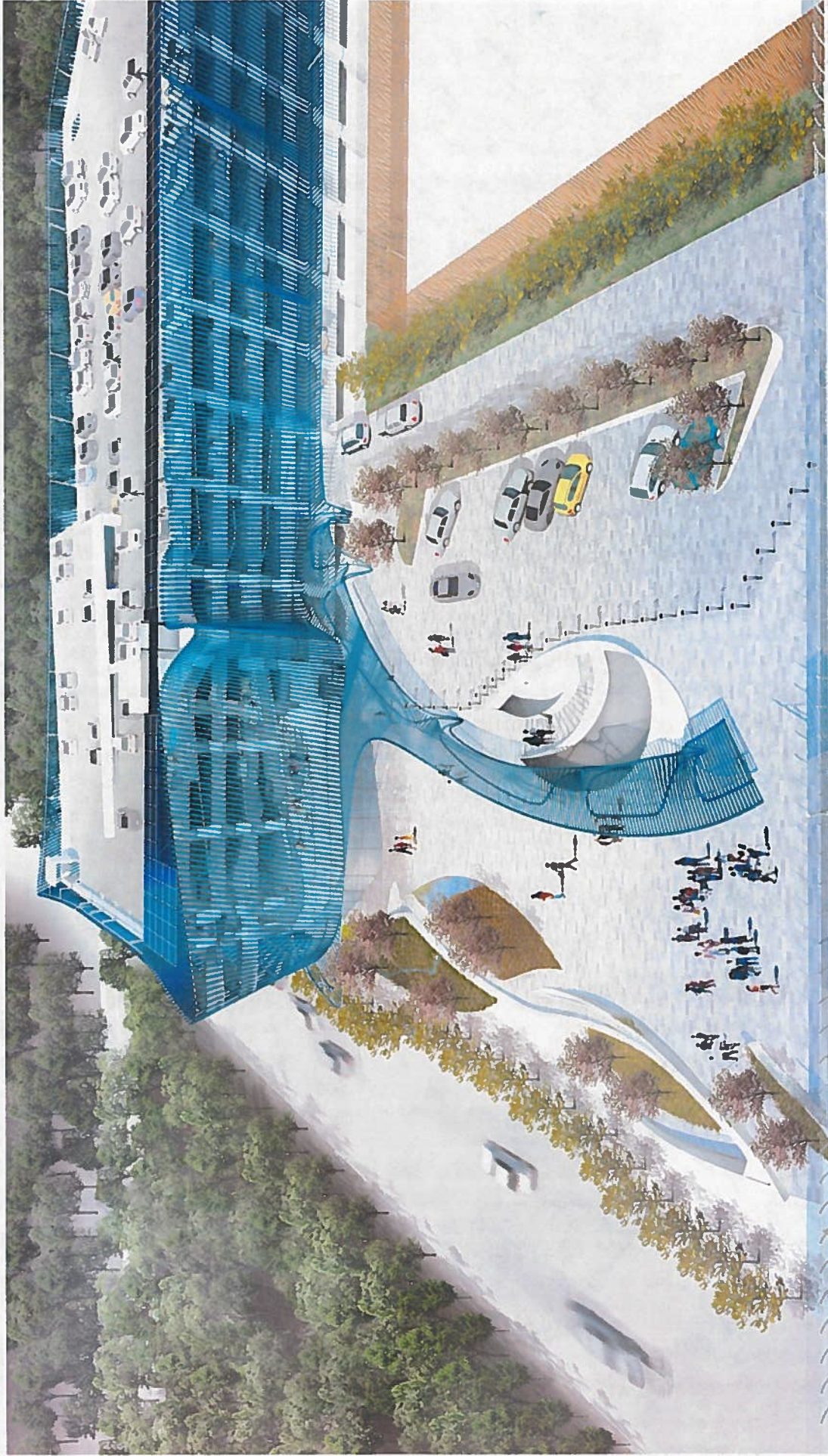
Peninsula Parking Garage

Plaza Entry at S. 200th - IN
MOTION



South 200th Link Extension Parking Garage

View showing Garage, Retail and Plaza



Seattle 2011 Joint Enterprise Planning

A photograph of a white Sound Transit bus with a blue and green abstract wave graphic on its side. The bus is viewed from a low angle, showing its windows and roof. The background is a clear blue sky. The text "UNIVERSITY" is partially visible on the blue background of the bus's side panel.

ST SOUNDTRANSIT
RIDE THE WAVE

Angle Lake Station looking SW





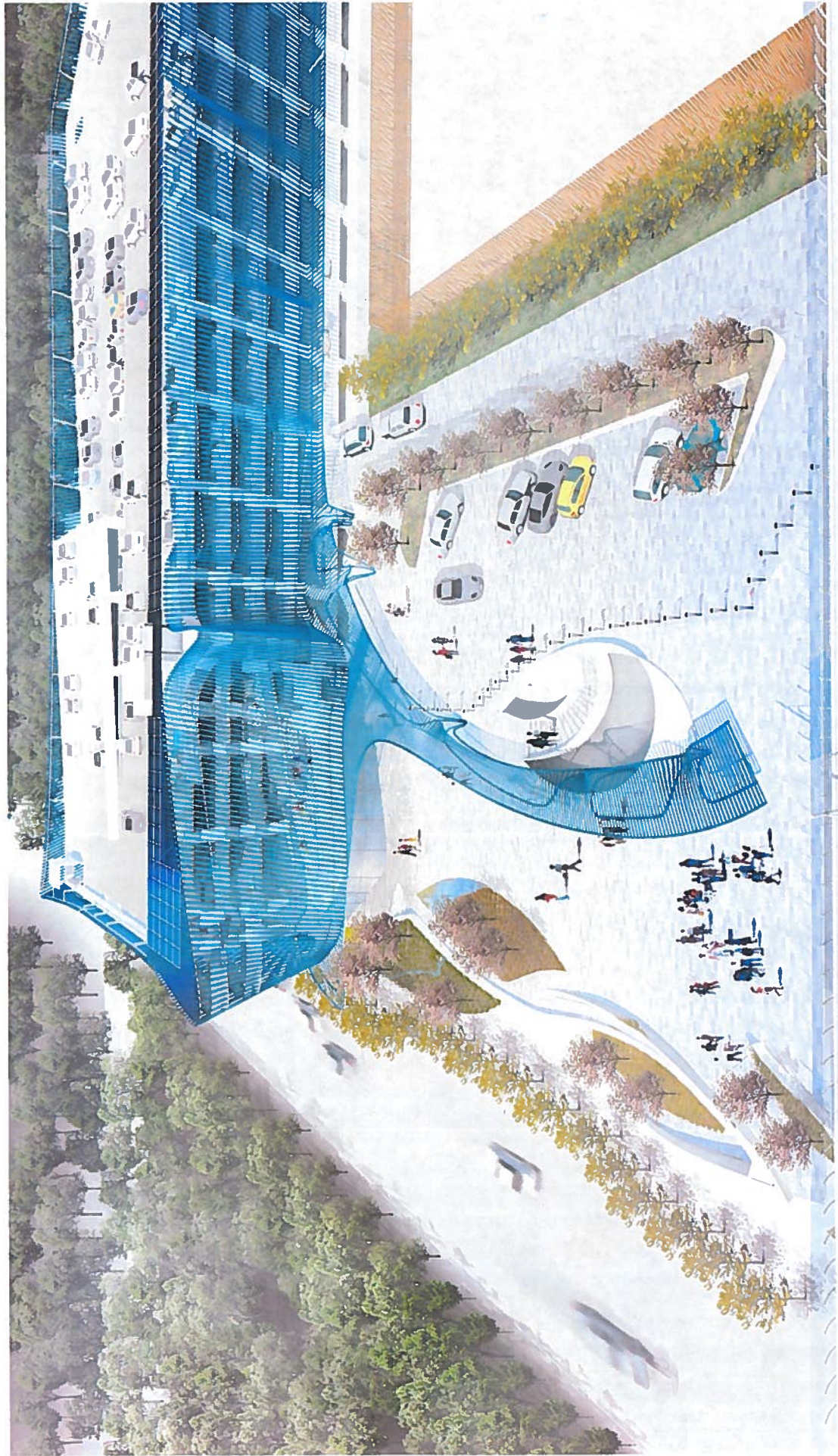
South 200th Link
Extension Parking Garage
City of SeaTac
Sound Transit

Plaza View - Garage, Retail and Canopy



South 200th Link Extension Parking Garage

View showing Garage, Retail and Plaza



South 200th Link Extension Parking Garage