

HIGHLINE SCHOOL DISTRICT NO. 401
CAPITAL PROJECTS UPDATE
MAY 23, 2012

Newly Constructed Facilities

FUNDING OF REPLACEMENT SCHOOL PROJECTS

The following funding sources enabled the Highline School District to construct 13 new replacement elementary schools and 1 new replacement high school:

- ▶ Voter Approved Bond 2002 Funds
- ▶ Voter Approved Bond 2006 Funds
- ▶ State Construction Assistance Funds
- ▶ Port of Seattle / FAA Funds
- ▶ State Department of Commerce Funds*

(*Formerly CTED - Community Trade and Economics Development)

BOND - ELEMENTARY SCHOOLS

66,500 Square Feet	Classroom Telephones
550-600 Student Capacity	Itinerant Offices
26 Classrooms	PTSA Office
Library	Community Room
Two Story Building	Music Room
Sloped, Metal Roof	Full-Sized Gymnasium
Durable Low Maintenance Materials	Multi-Purpose Room
Earthquake Reinforcement	2 All-Weather Playfields
Fire Alarms & Sprinklers	Covered Play Court
Emergency Generator	Increased Parking
ADA Accessible	Separate Bus Loading & Unloading Area
Classroom Computers	Separate Parent Drop-Off & Meet
Air-Conditioned / Energy Efficient	Pick- Up Area
All Current Codes	

2002 BOND

2002 Bond - CAPFIP Projects

Gregory Heights Elementary School

Hazel Valley Elementary School

◆ Madrona Elementary School

◆ Mt. Rainier High School

Mount View Elementary School

◆ North Hill Elementary School

White Center Heights Elementary School

2002 Bonus Projects

Bow Lake Elementary School

◆ Cedarhurst Elementary School

◆ Schools included in the “Sound Environment for Education Study” eligible for Port of Seattle and the Federal Aviation Administration (FAA) Funds per the Memorandum of Agreement (MOA) between the District, the Port of Seattle and the FAA.

2004

GREGORY HEIGHTS



❖ 69,790 SQ. FT.

❖ Final Construction Cost: \$18.4M

❖ State Construction Assistance Funds



2004

HAZEL VALLEY

- ❖ 65,983 SQ. FT.
- ❖ Final Construction Cost: \$17.6M
- ❖ State Construction Assistance Funds



2004

MADRONA

❖ 71,801 SQ. FT.

❖ Final Construction Cost: \$ 20.3M

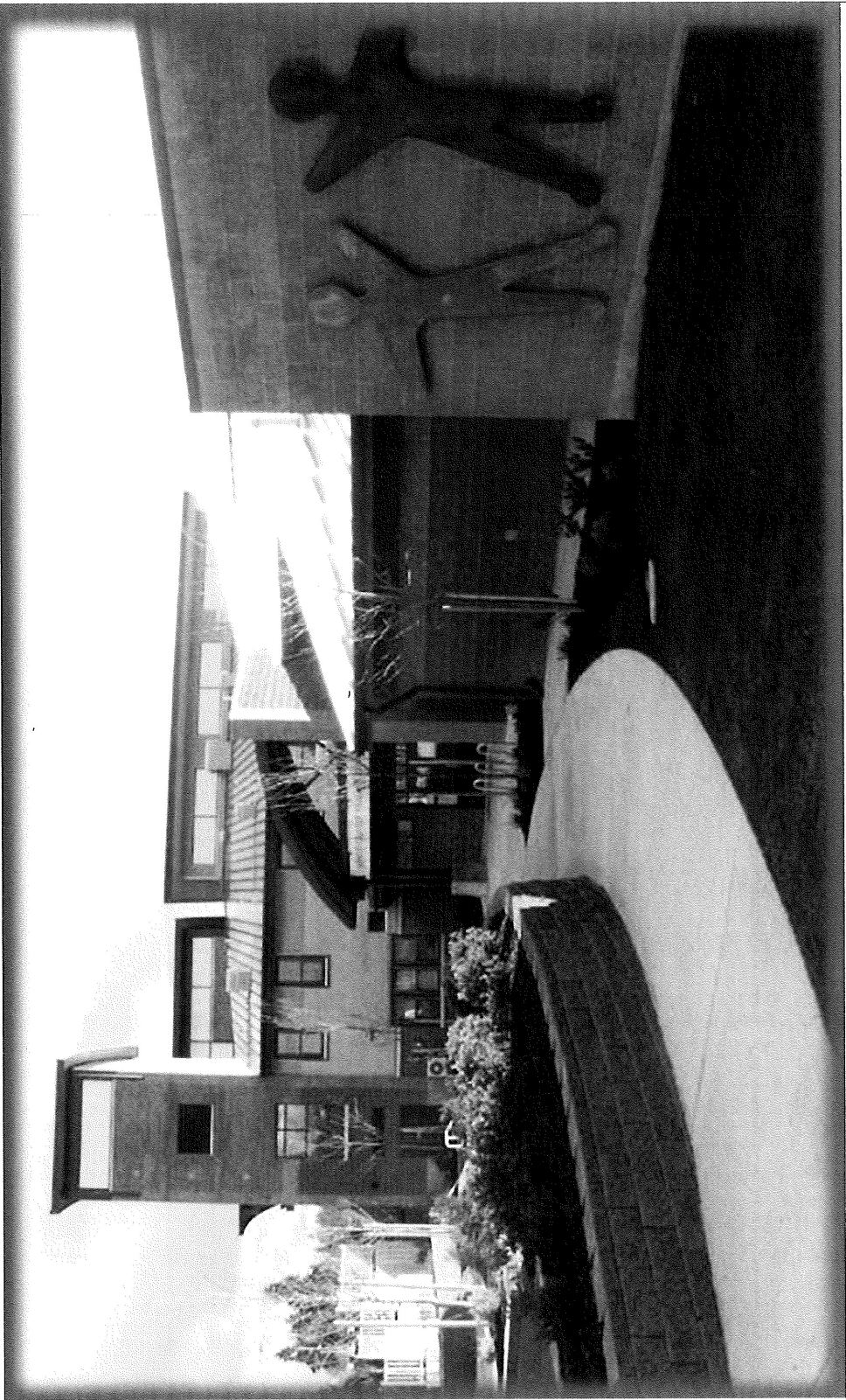
❖ State Construction Assistance Funds

❖ Port of Seattle / FAA Funds

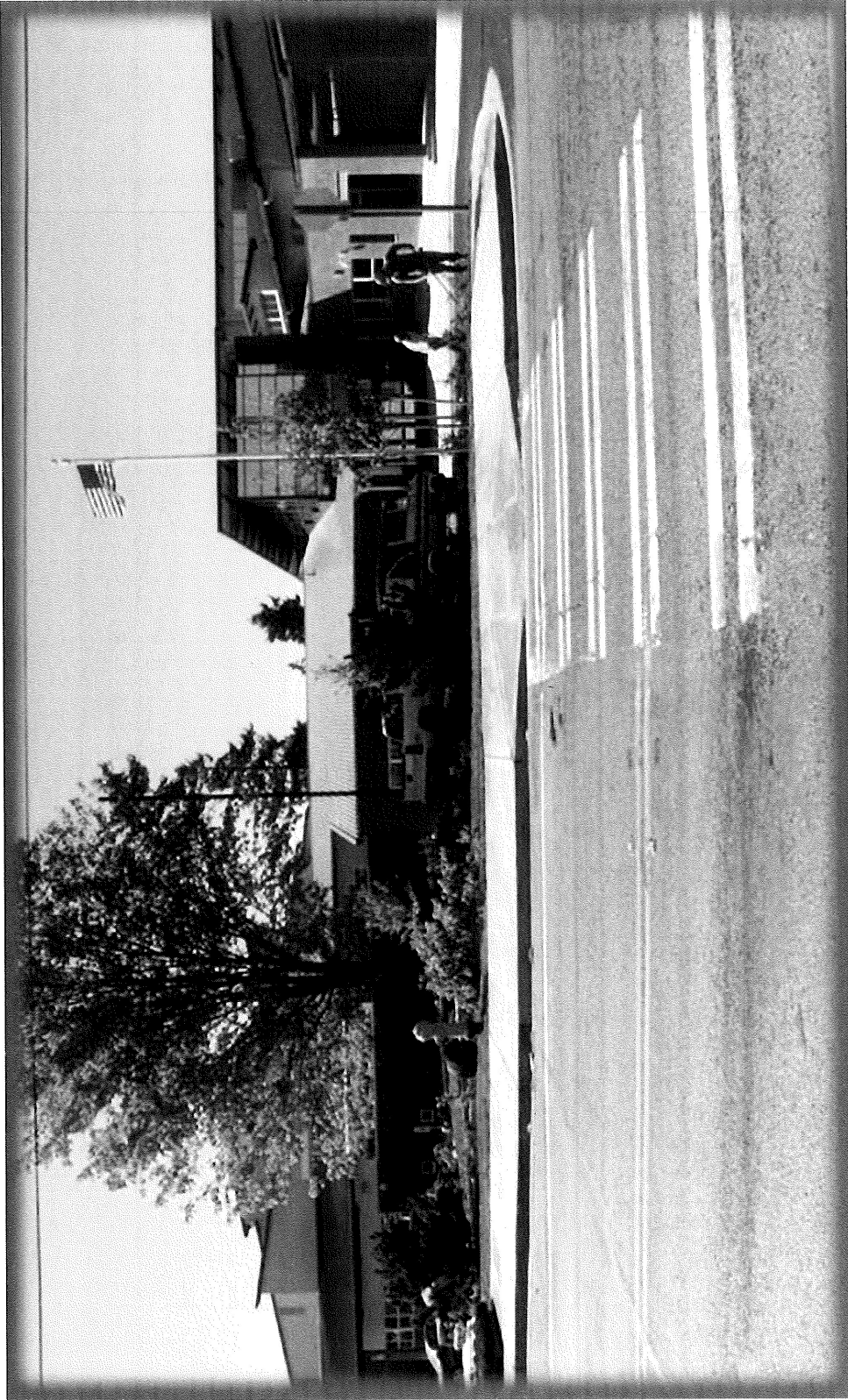
❖ State Department of Commerce Funds

2004

WHITE CENTER HEIGHTS



- ❖ 65,654 SQ. FT.
- ❖ Final Construction Cost: \$18.6M
- ❖ State Construction Assistance Funds



2005

MOUNT VIEW

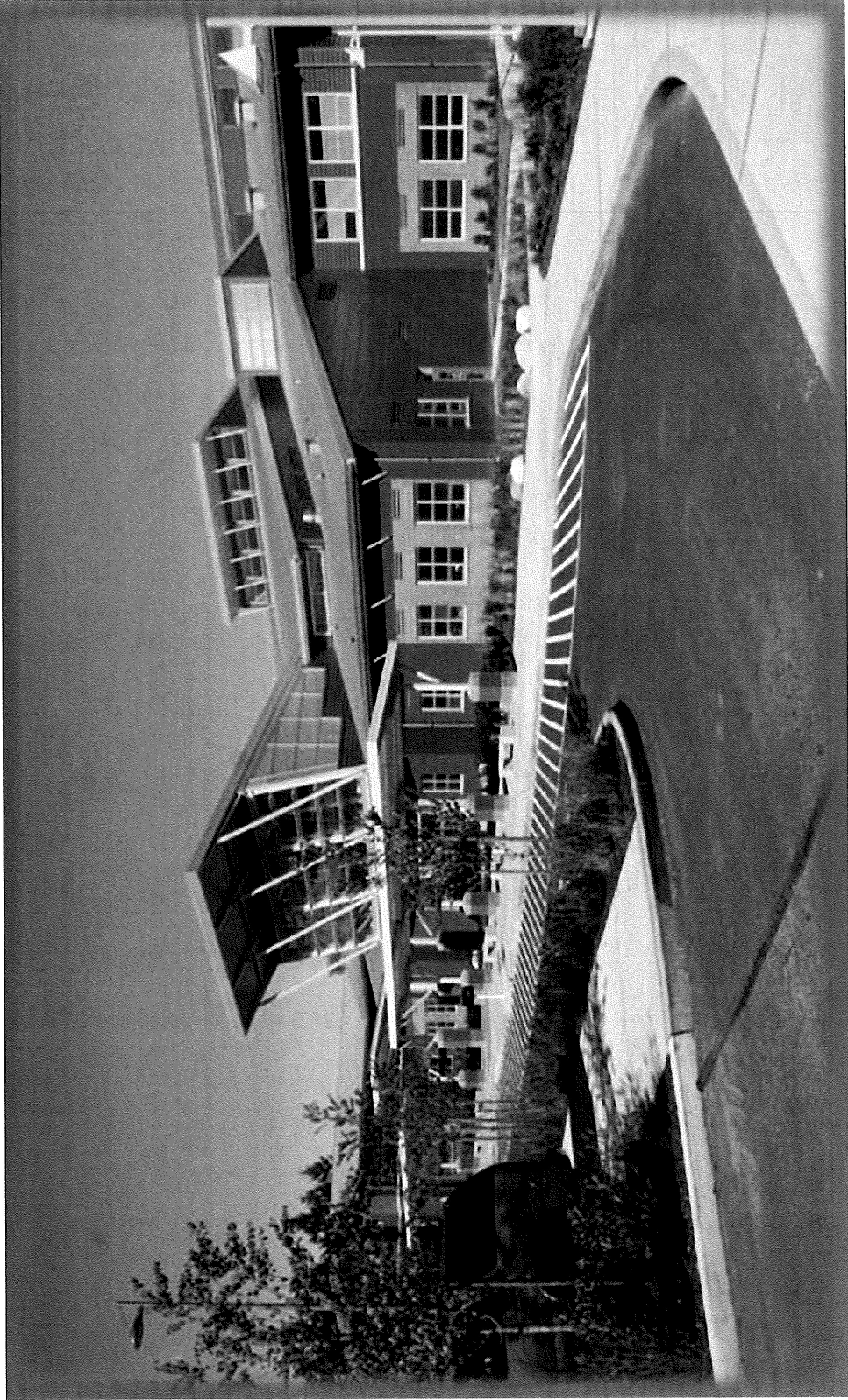
- ❖ 68,804 SQ. FT.
- ❖ Final Construction Cost: \$23.3M
- ❖ State Construction Assistance Funds



2005

NORTH HILL

- ❖ 71,550 SQ. FT.
- ❖ Final Construction Cost: \$ 21.7M
- ❖ State Construction Assistance Funds
- ❖ Port of Seattle / FAA Funds
- ❖ State Department of Commerce Funds



2007

MT. RAINIER

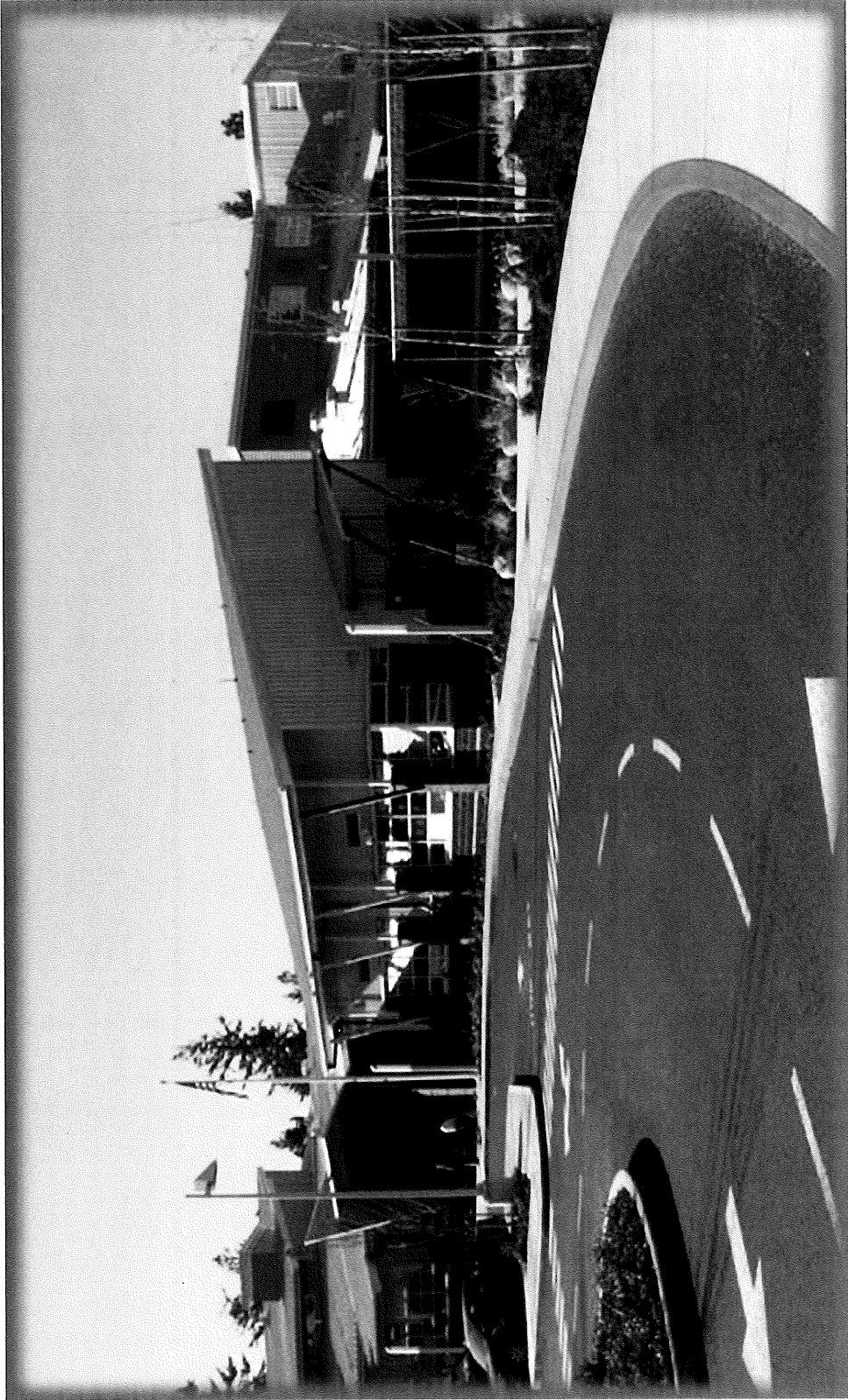
❖ 207,143 SQ. FT.

❖ Final Construction Cost: \$69.9M

❖ State Construction Assistance Funds

❖ Port of Seattle / FAA Funds

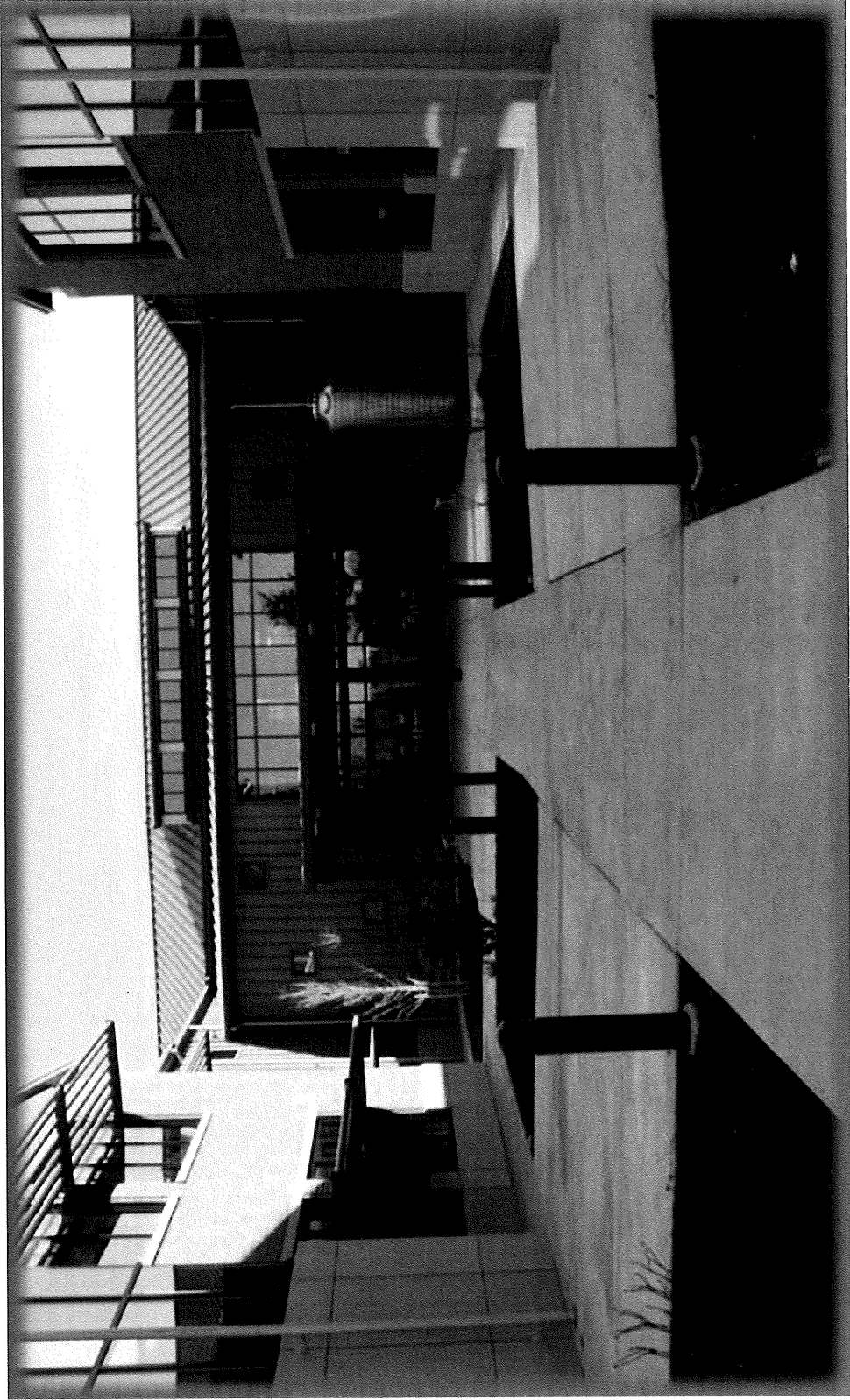
❖ State Department of Commerce Funds



2007

BOW LAKE

- ❖ 74,980 SQ. FT.
- ❖ Final Construction Cost: \$ 31.7M
- ❖ State Construction Assistance Funds



2008

CEDARHURST

- ❖ 72,877 SQ. FT.
- ❖ Final Construction Cost: \$ 25.3M
- ❖ State Construction Assistance Funds
- ❖ Port of Seattle / FAA Funds
- ❖ State Department of Commerce Funds

2006 BOND

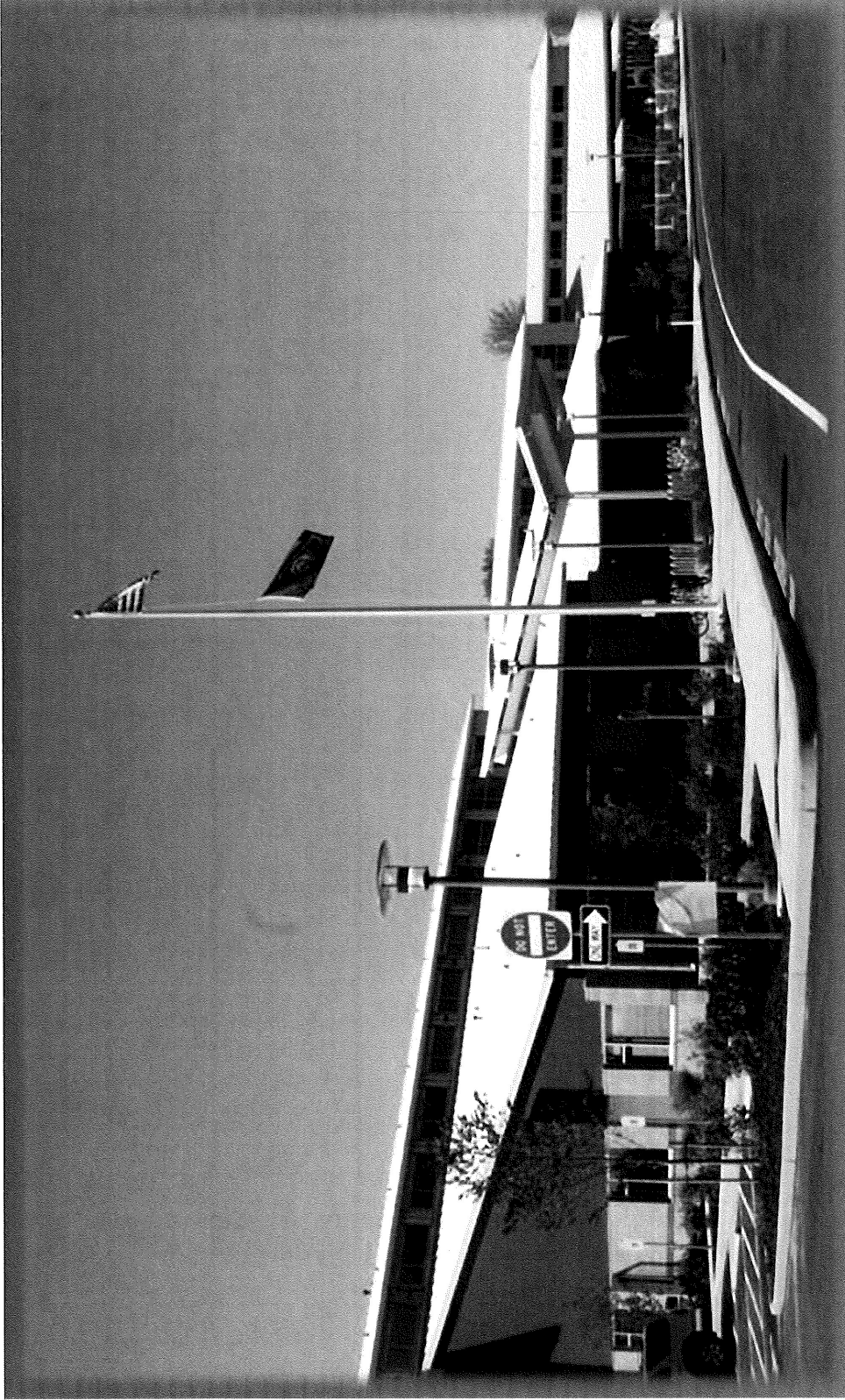
2006 Bond - CAPFIP Projects

- Marvista Elementary School
- ◆ Midway Elementary School
- ◆ Parkside Elementary School
- Shorewood Elementary School

2006 Bonus Project

- McMicken Elementary School

◆ Schools included in the “Sound Environment for Education Study” eligible for Port of Seattle and the Federal Aviation Administration (FAA) Funds per the Memorandum of Agreement (MOA) between the District, the Port of Seattle and the FAA.



2008

MIDWAY

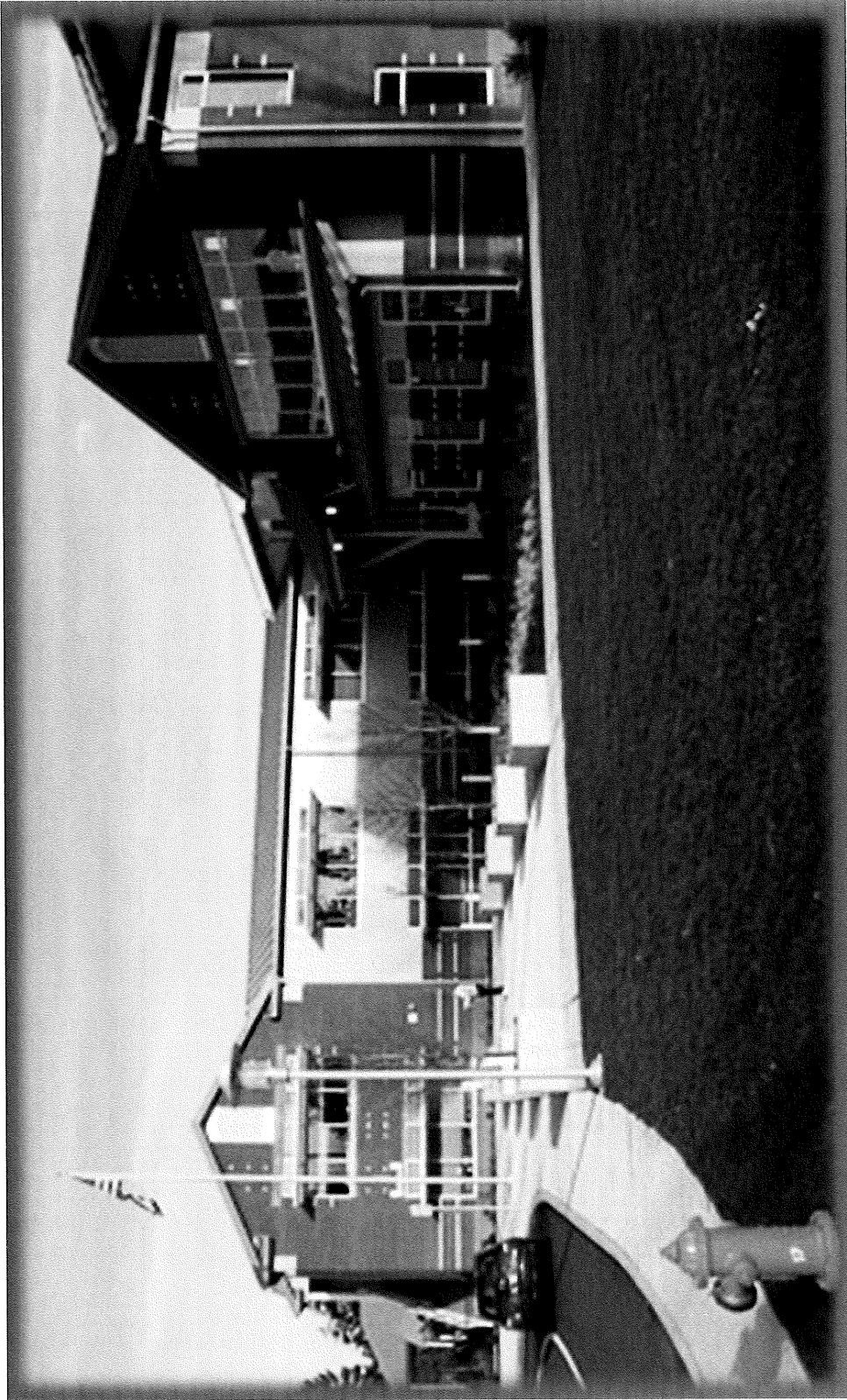
- ❖ 67,154 SQ. FT.
- ❖ Final Construction Cost: \$31.9M
- ❖ State Construction Assistance Funds
- ❖ Port of Seattle / FAA Funds



2008

SHOREWOOD

- ❖ 62,075 SQ. FT.
- ❖ Final Construction Cost: \$26.7M
- ❖ State Construction Assistance Funds



2009

MARVISTA

❖ 73,350 SQ. FT.

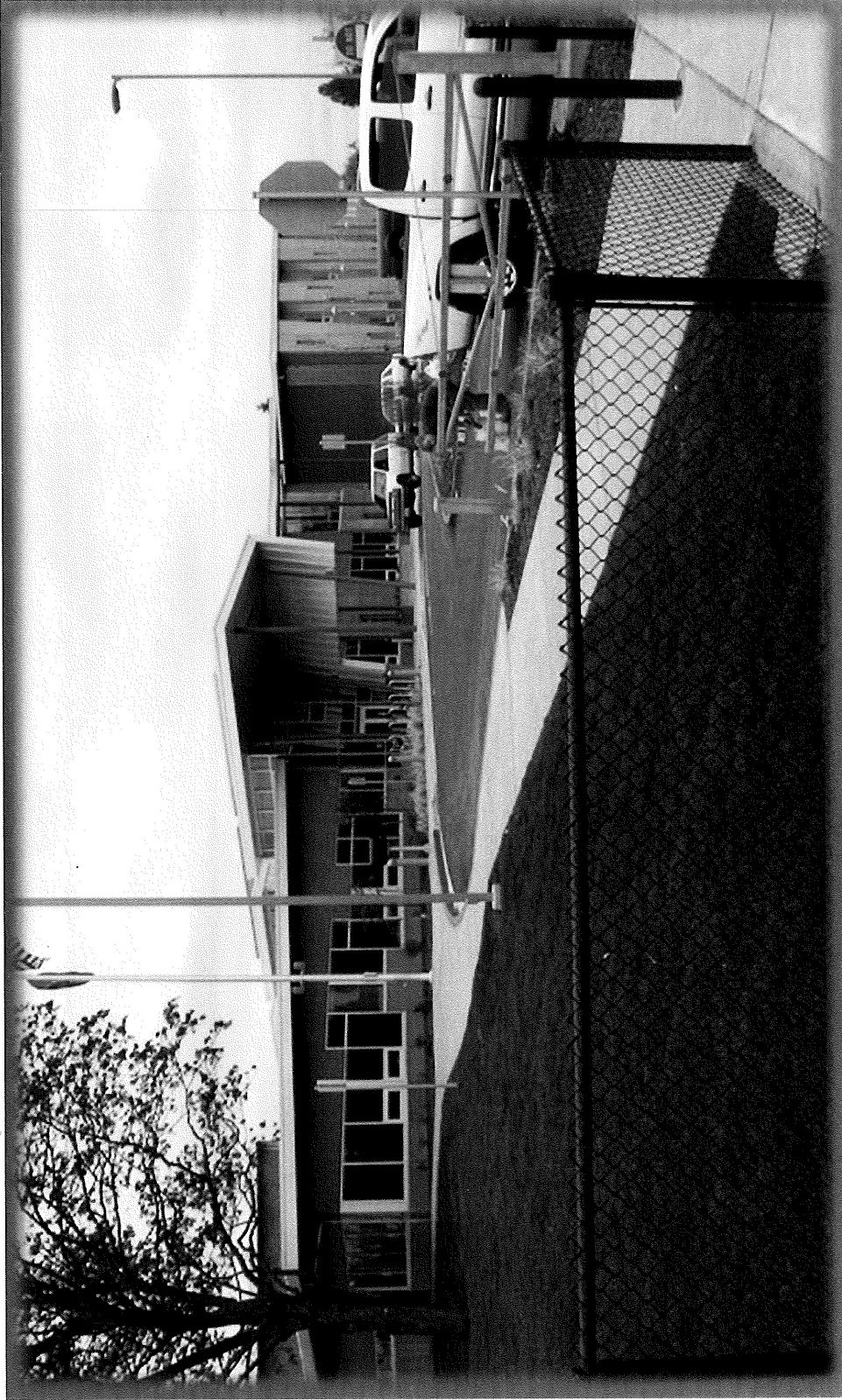
❖ Final Construction Cost: \$32.9M



2010

PARKSIDE

- ❖ 77,228 SQ. FT.
- ❖ Final Construction Cost: \$37.4M
- ❖ Port of Seattle / FAA Funds
- ❖ State Department of Commerce Funds



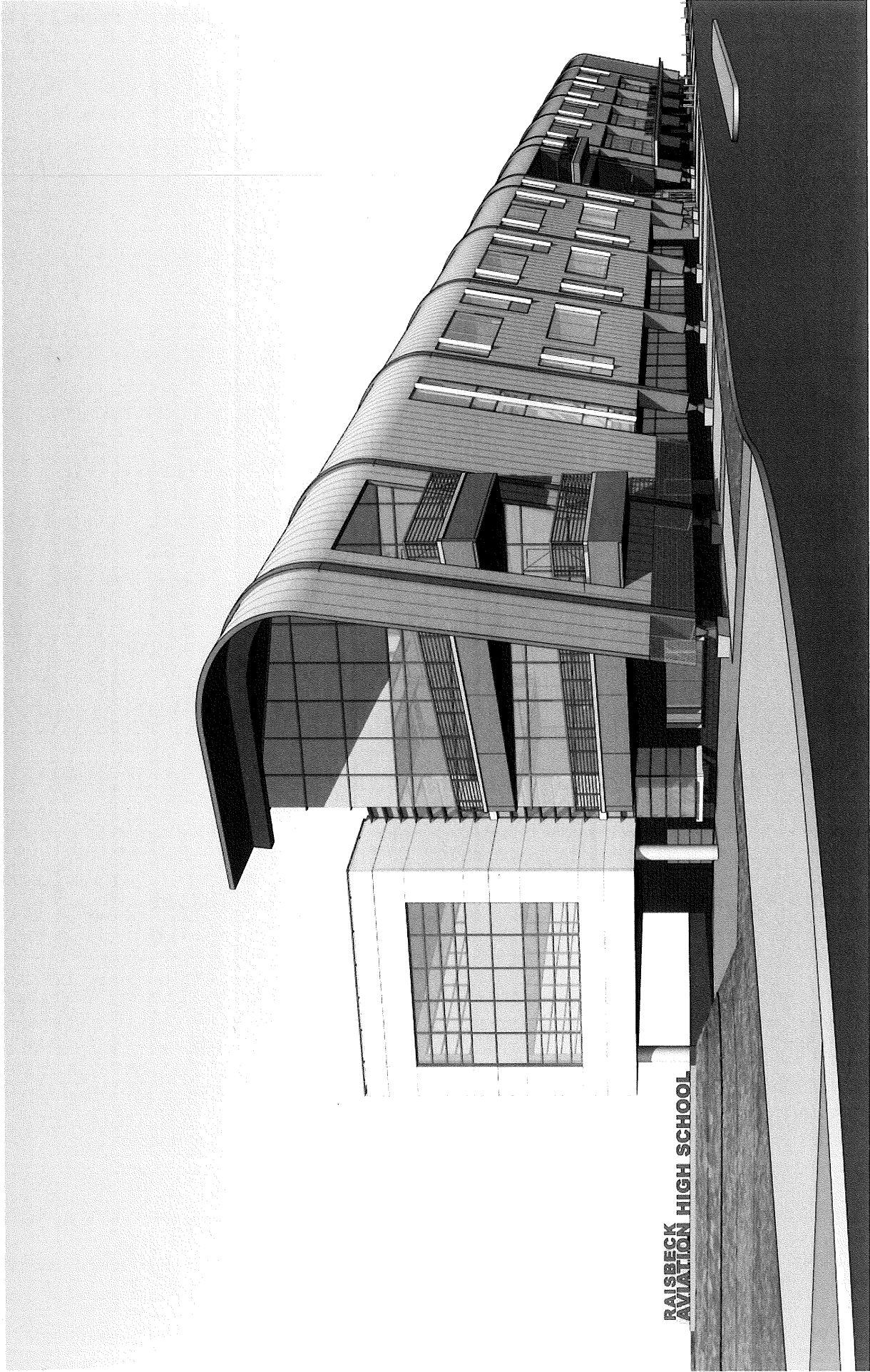
2011

McMICKEN HEIGHTS

- ❖ 72,711 SQ. FT.
- ❖ Final Construction Cost: \$27M
- ❖ State Construction Assistance Funds



PROJECTS UNDER CONSTRUCTION



**Raisbeck Aviation High School
Located On The Museum Of Flight Property**

Raisbeck Aviation High School

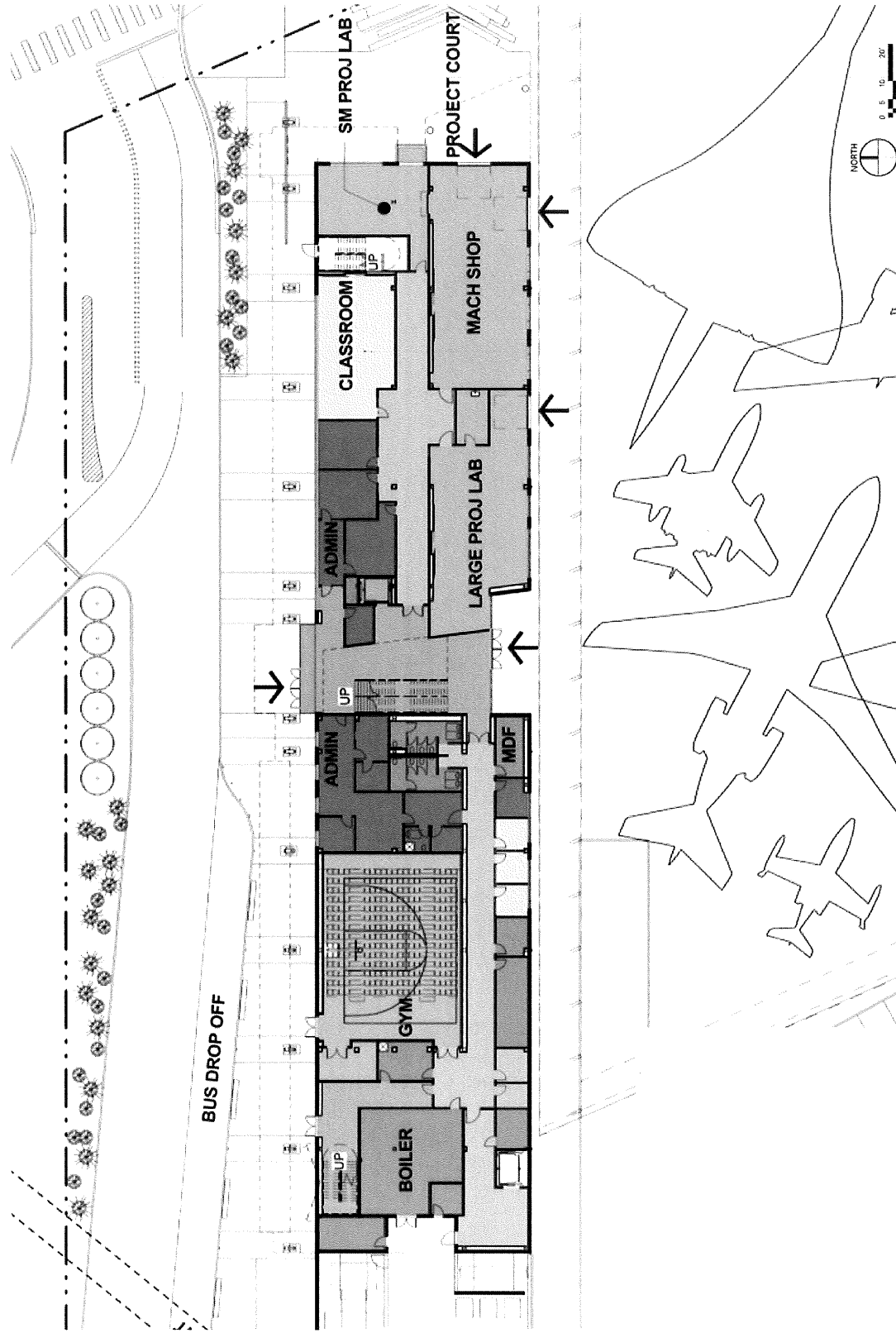


The School is an Innovative Aviation/Aerospace-Oriented High School Specializing in Avionics and Robotics

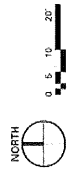
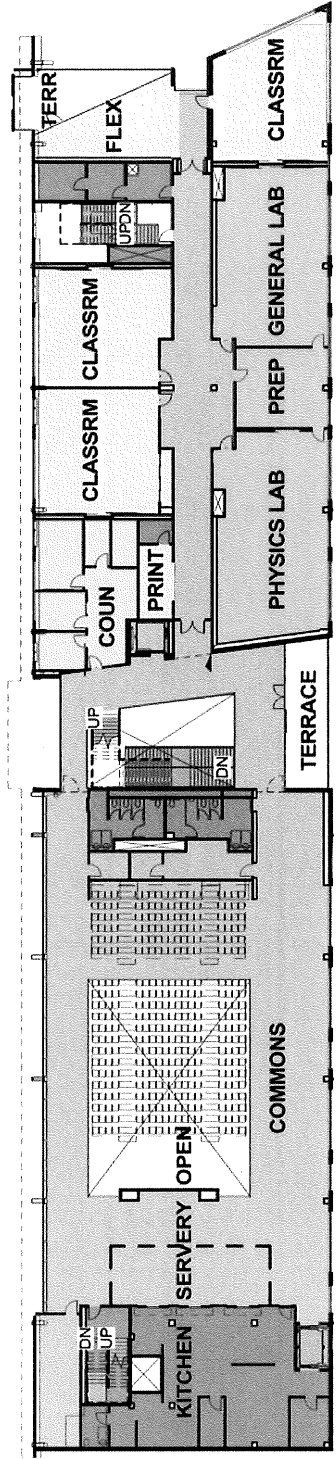
85,000 Sq. Ft. Building with 3 Levels holds State-of-the-Art Science Labs to Support Biology, Chemistry, Physics and Robotics

Additional Project Labs will Accommodate the Design and Construction of Aviation Related Projects Including Analysis of Airplane Parts and Construction of Personal Aircraft

Capacity - 400 Students



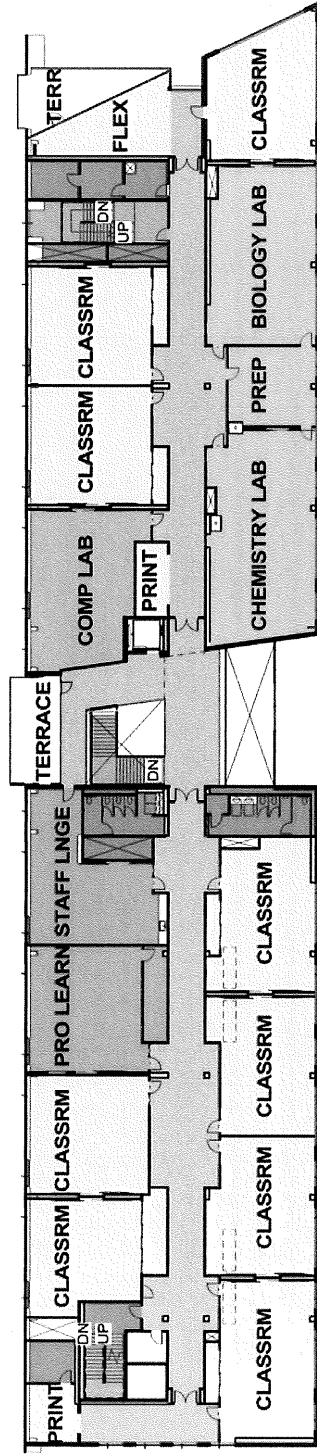
RAISBECK AVIATION HIGH SCHOOL
Level 1



RAISBECK AVIATION HIGH SCHOOL
Level 2

bassetti
architects

Highline
Public Schools



bassetti
architects



RAISBECK AVIATION HIGH SCHOOL
Level 3



2013

RAISBECK AVIATION

❖ 85,047 SQ. FT.

❖ Construction Contract Cost: \$27.3M

Private Donations

State Department of Commerce Funds

US Department of Education Funds

Port of Seattle Funds

Highline School District No. 401 Funds

NEXT STEPS



Prepare for Future Bond