

CITIES, SCHOOLS AND THE PORT: WHAT WE HAVE IN COMMON AND WHAT WE CAN DO TOGETHER – THE ARGUMENT FOR REAL PARTNERSHIP

A HIGHLINE FORUM PRESENTATION
BY CITY OF BURIEN STAFF

May 22, 2013 | Burien City Hall

CITIES, SCHOOLS AND THE PORT: WHAT WE HAVE IN COMMON AND WHAT WE CAN DO TOGETHER – THE ARGUMENT FOR REAL PARTNERSHIP

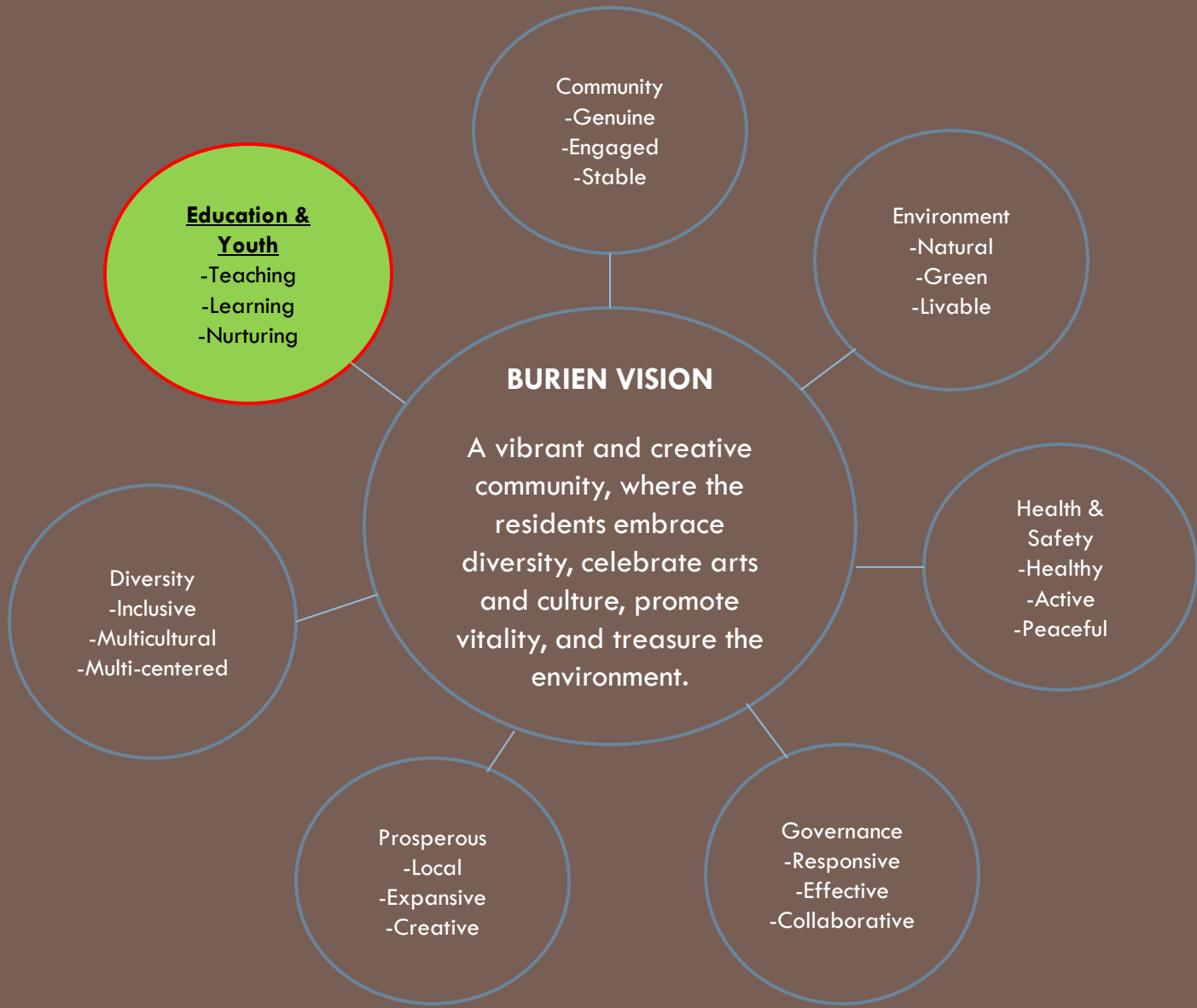
1. VISION
2. HISTORY
3. PRESENT
4. SCHOOL DATA
5. OUR INTEREST IN SCHOOLS
6. COLLABORATION OPPORTUNITIES

BURIEN VISION

A vibrant and creative community, where the residents embrace diversity, celebrate arts and culture, promote vitality, and treasure the environment.

WHAT WE HAVE IN COMMON AND WHAT WE CAN DO TOGETHER

1. VISION



WHAT WE HAVE IN COMMON AND WHAT WE CAN DO TOGETHER

1. VISION

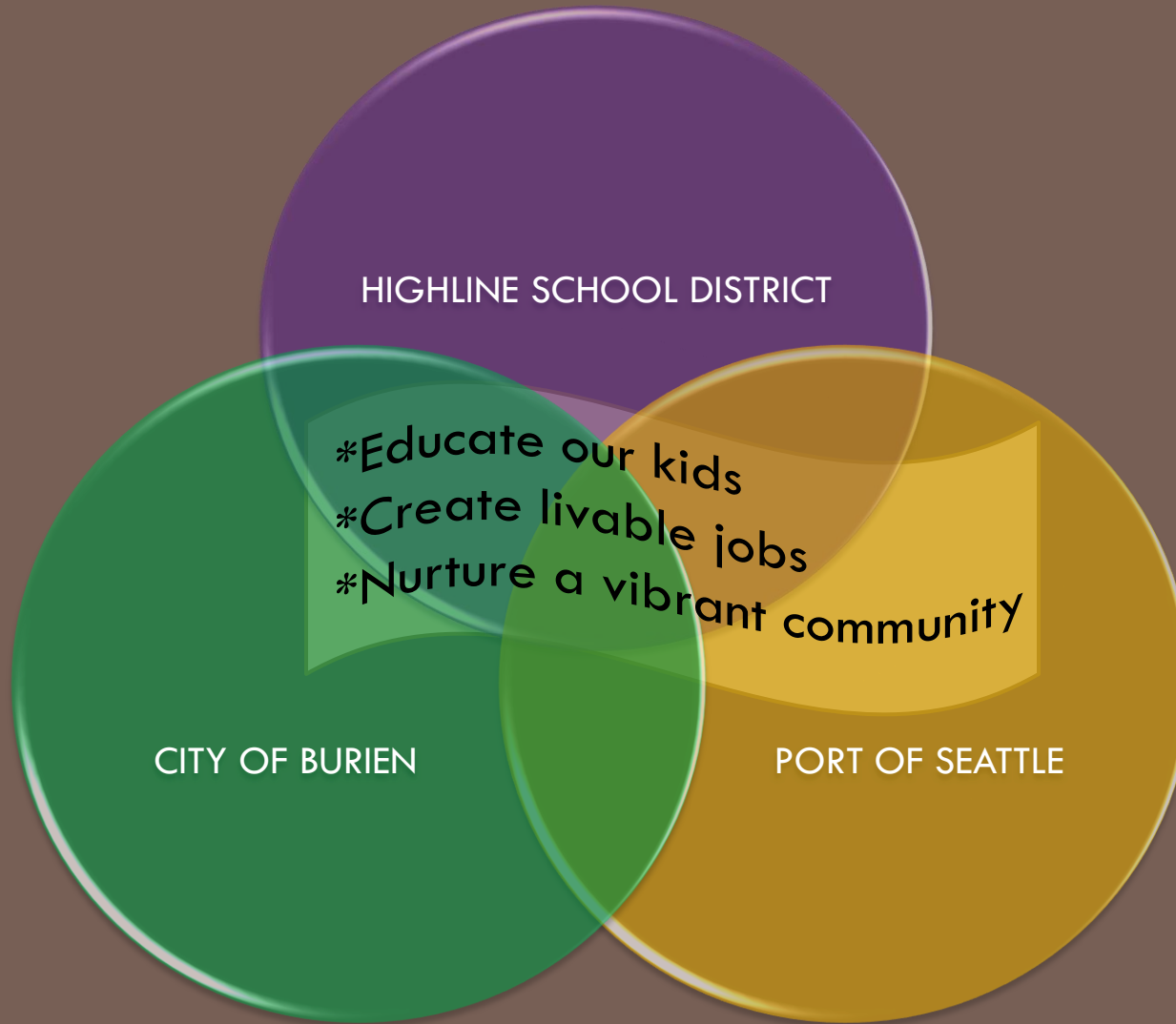
Highline School District: Every student graduates prepared for college, career, and citizenship.

City of Burien: A vibrant and creative community, where the residents embrace diversity, celebrate arts and culture, promote vitality, and treasure the environment.

Port of Seattle (Century Agenda): Over the next 25 years, we will add 100,000 jobs through economic growth led by the Port of Seattle, for a total of 300,000 port-related jobs in the region, while reducing our environmental footprint.

WHAT WE HAVE IN COMMON AND WHAT WE CAN DO TOGETHER

1. VISION



WHAT WE HAVE IN COMMON AND WHAT WE CAN DO TOGETHER

1. VISION



Burien - A Thriving Community 1940's & 1950's

WHAT WE HAVE IN COMMON AND WHAT WE CAN DO TOGETHER

2. HISTORY



1949: 2 yr-old Sea-Tac Airport
begins International Service

WHAT WE HAVE IN COMMON AND WHAT WE CAN DO TOGETHER

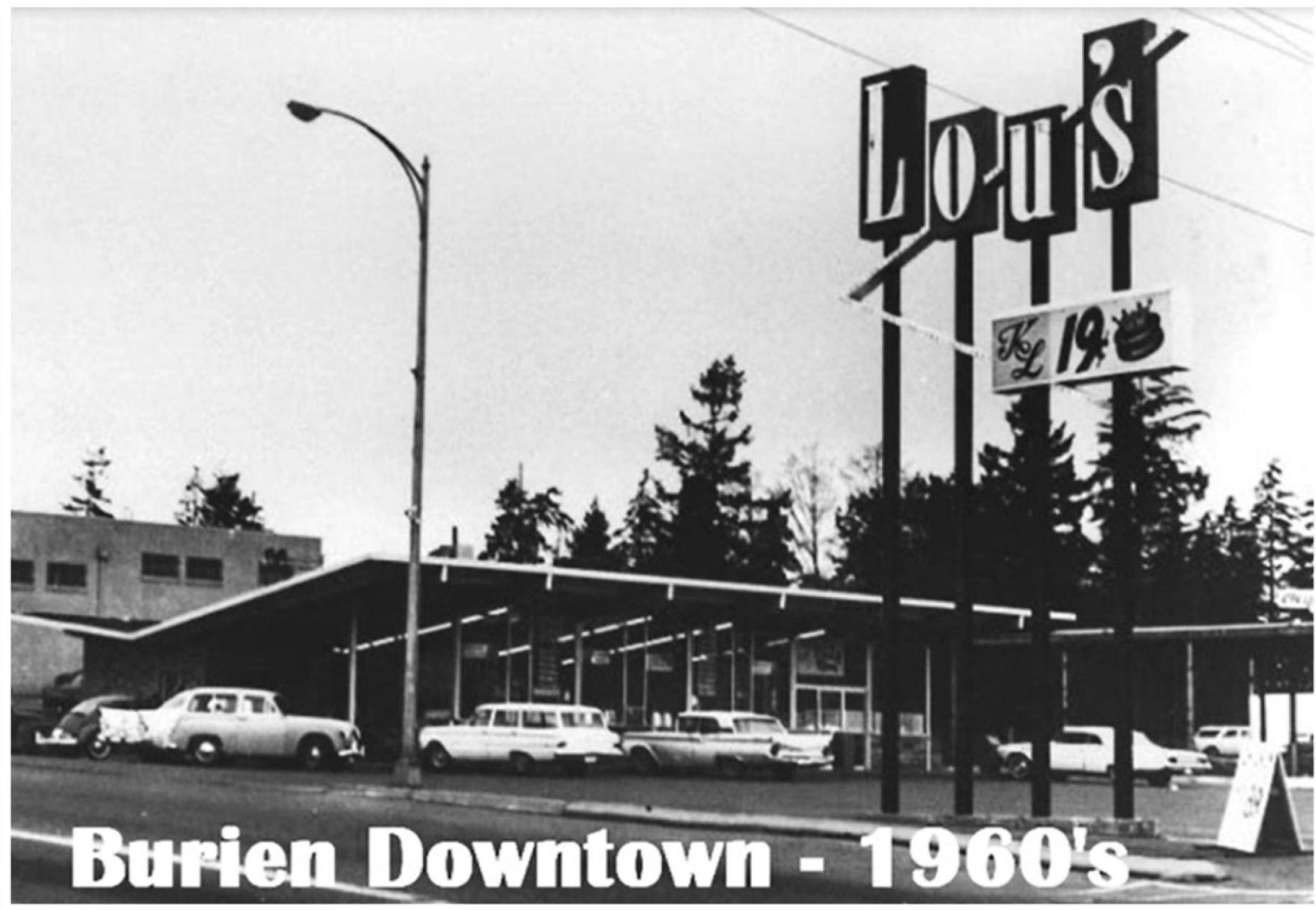
2. HISTORY



1955: The 707 ushers in
the Jet Age, triggering an
explosion in air travel.

WHAT WE HAVE IN COMMON AND WHAT WE CAN DO TOGETHER

2. HISTORY



Burien Downtown - 1960's

WHAT WE HAVE IN COMMON AND WHAT WE CAN DO TOGETHER

2. HISTORY



**1968 - Southgate Mall in Burien
project never completed - moved to Tukwila**

WHAT WE HAVE IN COMMON AND WHAT WE CAN DO TOGETHER

2. HISTORY

Sunset Junior High Opened 1958 - Closed 1975 (17 years)

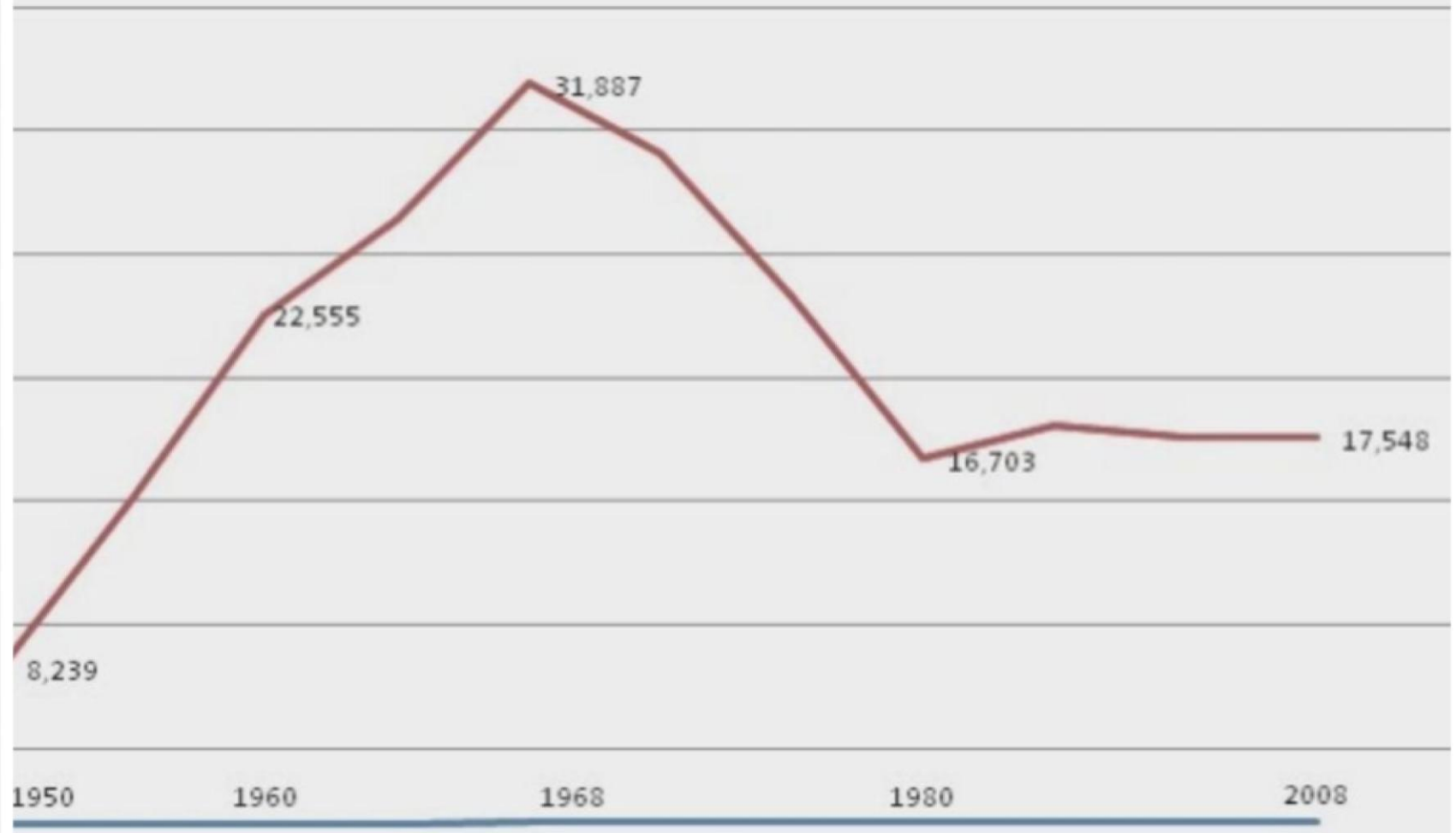


WHAT WE HAVE IN COMMON AND WHAT WE CAN DO TOGETHER

2. HISTORY

Highline Public Schools

—Year —Enrollment Number



WHAT WE HAVE IN COMMON AND WHAT WE CAN DO TOGETHER

2. HISTORY



WHAT WE HAVE IN COMMON AND WHAT WE CAN DO TOGETHER

2. HISTORY



WHAT WE HAVE IN COMMON AND WHAT WE CAN DO TOGETHER

2. HISTORY

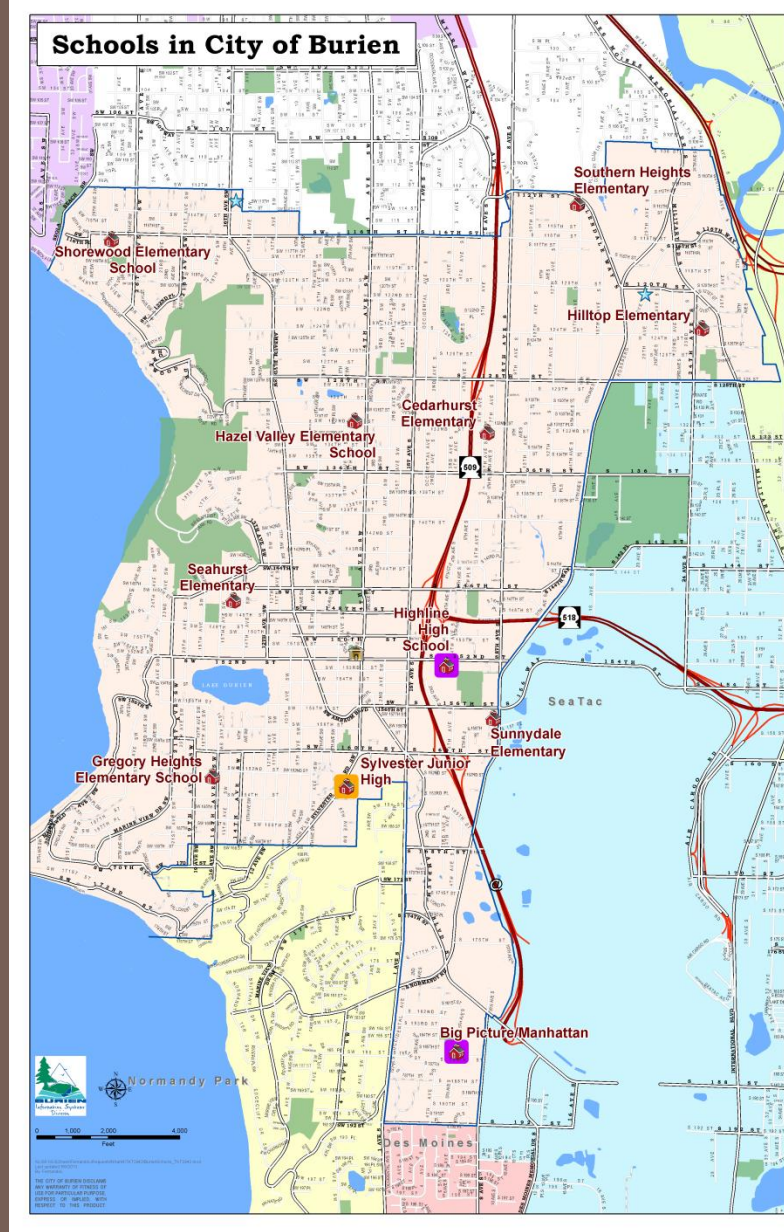


WHAT WE HAVE IN COMMON AND WHAT WE CAN DO TOGETHER

2. HISTORY

<u>Agencies</u>	<u>No. of FTEs</u>	<u>Operating Budget (million)</u>
Highline S.D.	2,086	\$193.8
Sea-Tac Airport	846	\$237
City of Burien	72	\$24





WHAT WE HAVE IN COMMON AND WHAT WE CAN DO TOGETHER

4. SCHOOL DATA

<u>CATEGORIES</u>	<u>AGENCIES</u>	<u>2000</u>	<u>2010</u>
POPULATION	Burien	31,881	33,313
	Highline S.D.	18,024	17,973
POPULATION IN POVERTY	Burien	9.5%	14.5%
	Highline S.D.	41.6%	63.4%
SPEAK LANGUAGE OTHER THAN ENGLISH	Burien	19.6%	28.6%
	Highline S.D.	8.4%	21.3%
WHITE	Burien	76%	63.5%
	Highline S.D.	52.6%	26.8%
HISPANIC	Burien	10.7%	20.7%
	Highline S.D.	13.2%	33.8%

Notes:

1. For more accurate comparison, we use Burien's 2010 pre-annexation population. Current Burien's population is 48,000. For HSD, we use number of enrolled students.

2. "Population in poverty" for HSD: We use data from "Free or Reduced-Price Meals" Program.

3. "Speak Language Other than English" for HSD: We use data from "Transitional Bilingual." Actual percentage of bilingual speakers might be higher.

4. Data Source: For Burien: OFM. For HSD: OSPI.

CHANGES IN 3RD GRADE'S READING/MATH PROFICIENCY (2009-11)

3rd Grade Reading (%)				
Burien Elementary Schools	2008-09	2009-10	2010-11	Change (2009-11)
Hilltop	44.6	56.8	66.3	21.7
Southern Heights	43.1	44.9	59.5	16.4
Shorewood	63.8	68.3	73.2	9.4
Cedarhurst	53.2	57.3	60.2	7
Seahurst	66.2	62.7	68.1	1.9
Hazel Valley	61.3	60.5	61.4	0.1
Gregory Heights	65.3	76.3	61.7	-3.6
3rd Grade Math (%)				
Burien Elementary Schools	2008-09	2009-10	2010-11	Change (2009-11)
Hilltop	33.8	45.3	51.8	18
Cedarhurst	37.1	44.9	48.9	11.8
Southern Heights	50.0	24.5	54.8	4.8
Hazel Valley	57.5	43.4	58.0	0.5
Shorewood	50.0	58.7	50.0	0
Seahurst	56.3	49.3	51.4	-4.9
Gregory Heights	69.3	61.0	45.7	-23.6

Source: Washington State's OSPI

WHAT WE HAVE IN COMMON AND WHAT WE CAN DO TOGETHER

4. SCHOOL DATA

BURIEN ELEMENTARY SCHOOLS: ENGLISH EFFICIENCY, POVERTY & TEST SCORES

2010-2011	Reading 3rd grade (%)	Math 3rd grade (%)	Free or reduced-price meals (%)	Transitional Bilingual (%)	Hispanic (%)	White (%)
Southern Heights	59.5	54.8	78.8	25.9	44.9	16.5
Cedarhurst	60.2	48.9	68.4	30.1	36.2	24.9
Hazel Valley	61.4	58.0	76.2	34.6	47.5	16.7
Gregory Heights	61.7	45.7	54.2	15.1	30.1	45.7
Hilltop	66.3	51.8	83.6	35.0	48.7	14.5
Seahurst	68.1	51.4	83.5	44.3	56.1	21.5
Shorewood	73.2	50.0	62.4	15.9	21.1	29.6
City of Burien	64.3	51.5	72.4	28.7	40.7	24.2
Highline S. D.	61.3	48.5	66.9	21.1	33.8	26.8
Washington State	73.1	61.6	43.7	8.7	18.9	61.3

	Low #
	High #

Source: Washington State's OSPI

WHAT WE HAVE IN COMMON AND WHAT WE CAN DO TOGETHER

4. SCHOOL DATA

WHAT EDUCATORS HAVE SAID IS NEEDED TO BE SUCCESSFUL:

1. Tutorial intervention:
Classes and textbooks
2. Teacher training
3. Parental involvement
4. Longer school day
5. Holistic approaches:
Nutrition, dental care
6. Early education
7. Others: Staff, buses,
snacks, etc.



WHAT WE HAVE IN COMMON AND WHAT WE CAN DO TOGETHER

4. SCHOOL DATA



WHAT WE HAVE IN COMMON AND WHAT WE CAN DO TOGETHER

5. OUR INTEREST IN SCHOOLS

COLLABORATIVE OPPORTUNITIES

1. BURIEN/SCHOOLS PARTNERSHIP

(MICHAEL LAFRENIERE, PARCS DEPT. DIRECTOR)

2. BURIEN/PORT PARTNERSHIP

(MAIYA ANDREWS, PUBLIC WORKS DEPT. DIRECTOR)

3. WELLNESS, EDUCATION AND WORKFORCE – PARTNERING FOR SUCCESSES

(DAN TRIMBLE, ECONOMIC DEVELOPMENT MANAGER)

4. SEAHURST PROJECT – ADVANCING A 20-YEAR LONG ENDEAVOR

(STEVE ROEMER, PARCS DEPT. DEVELOPMENT & OPERATION MANAGER)

WHAT WE HAVE IN COMMON AND WHAT WE CAN DO TOGETHER

6. COLLABORATIVE OPPORTUNITIES | CITY OF BURIEN STAFF

BURIEN/SCHOOLS PARTNERSHIP



&



WHAT WE HAVE IN COMMON AND WHAT WE CAN DO TOGETHER

HIGHLINE FORUM PRESENTATION - MAY 22, 2013 | MICHAEL LAFRENIERE - CITY OF BURIEN

CAPITAL PROJECTS (2001 INTERLOCAL)

- ❖ Moshier Park Practice field drainage project in 2012
 - Highline SD submitted and administered YSFG grant.
 - Both Highline SD and COB each contributed matching funds.
 - COB managed the project.

- ❖ COB's Use of Surplus Highline SD Property
 - Lakeview Park (exploring expansion of Use Agreement for off-leash dog park)
 - Manhattan Playground

- ❖ Past COB-funded Projects include:
 - Gregory Heights School ballfield improvements (1999)
 - Hazel Valley School sports field improvements (2000)
 - Manhattan School Playground & Soccer Field Renovation (2002)

- ❖ Ongoing relationship with Highline SD and Puget Sound Skills Center Marine Technology Lab at Seahurst Park

RECREATION PROGRAMS IN DISTRICT FACILITIES

- ❖ Hazel Valley Elementary School
 - Afterschool Physical Education Classes*
 - Artist-in-Residency Programs*
 - Evening Family Gym Jam Program*
 - Adult Volleyball & Youth Soccer Classes

- ❖ Cedarhurst Elementary School
 - Afterschool Physical Education Classes*
 - Evening Family Gym Jam Program*
 - Preschool Sports Programs

- ❖ Gregory Heights Elementary School
 - Preschool Sports Programs

* *City-subsidized*

RECREATION PROGRAMS IN DISTRICT FACILITIES

- ❖ Hilltop Elementary School
 - Summer Recreation Program*
 - Afterschool Physical Education Classes*
 - Artist-in-Residency Programs*
 - Evening Family Gym Jam Program*

- ❖ Sylvester Middle School
 - Teen Late Night Program*
 - Summer Sports Camps

- ❖ Highline High School
 - Teen Late Night Program*

- ❖ Past Funding for School-Readiness Programs*

* *City-subsidized*



**NERA Phase 1
Drainage Concepts**

BURIEN/PORT PARTNERSHIPS
HIGHLINE FORUM PRESENTATION - MAY 22, 2013 | MAIYA ANDREWS - CITY OF BURIEN

1

2

3

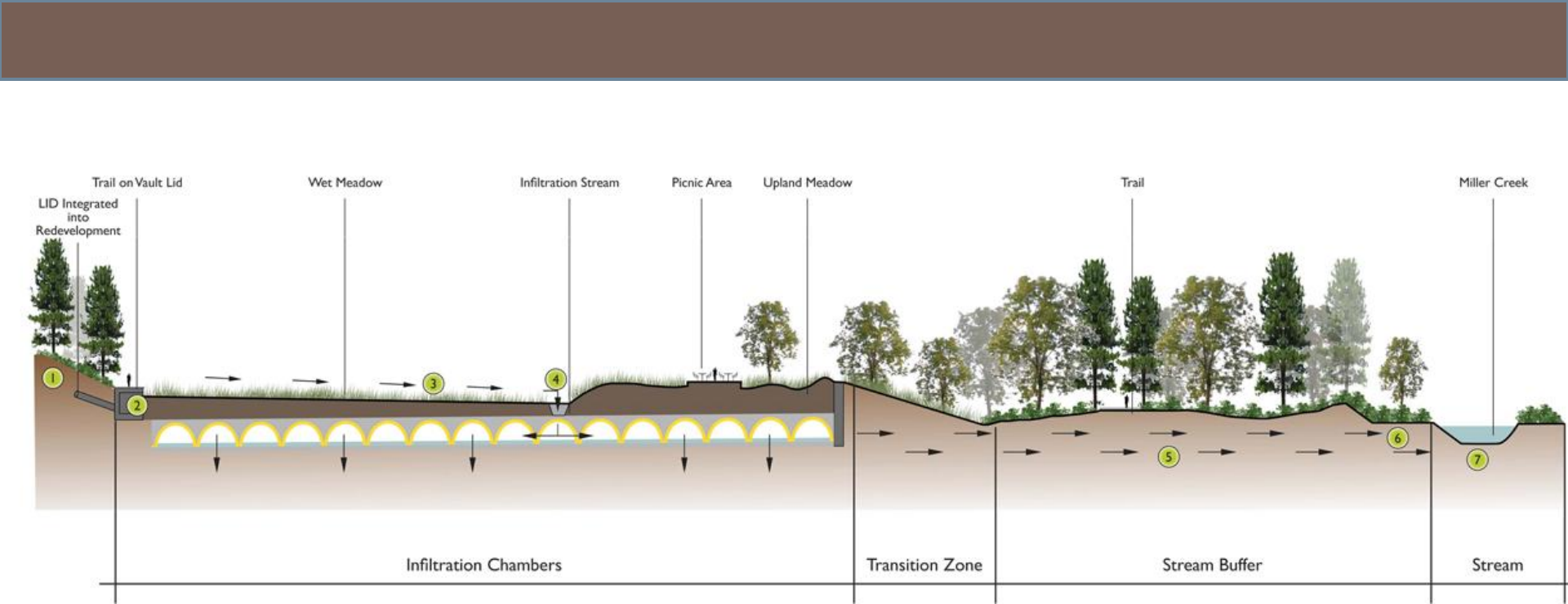
4

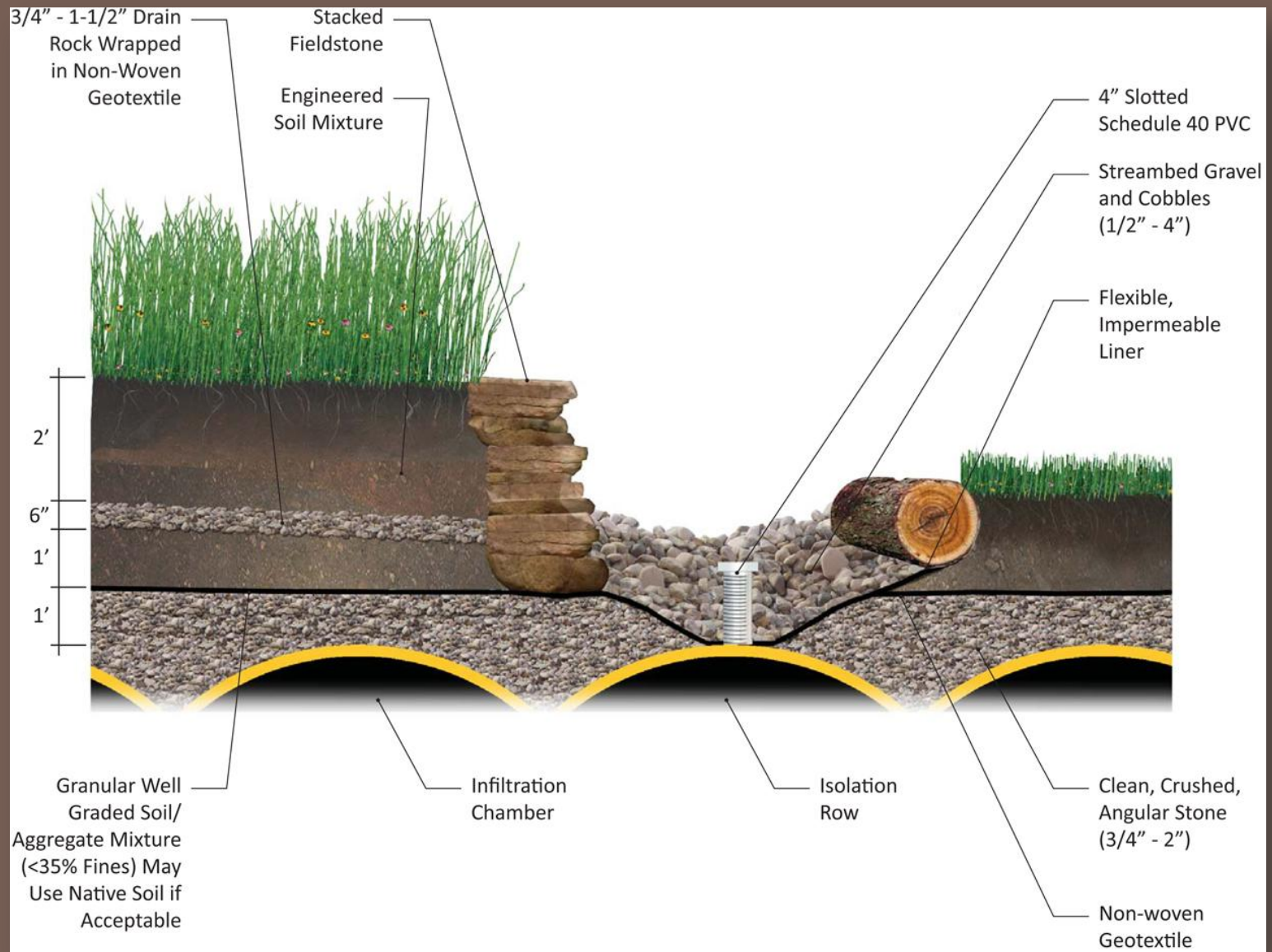
5

6

7

Natural Hydrologic Processes	Forested Upland	Hillside Seeps	Wet Meadow in Terraced Floodplain	Losing (Infiltrating) Stream Tributary in Terraced Floodplain	Floodplain Hyporheic Zone	Floodplain Wetland	Miller Creek In-Channel Habitat
------------------------------	-----------------	----------------	-----------------------------------	---	---------------------------	--------------------	---------------------------------





WELLNESS, EDUCATION AND WORKFORCE PARTNERING FOR SUCCESSES

Burien - a city and community focused on quality
medical care and healthy living.



**“State of the art medical facilities, health and wellness partners,
city personnel and dedicated educators have come together in one
vibrant community.”**

It speaks to the heart of a revitalized northwest city. A place where not only the best of
healthcare providers can be found, but schools and programs dedicated to produce the
medical and healthy living professionals of tomorrow.

In the Puget Sound region...Burien is home to health, wellness and medical education.

WHAT WE HAVE IN COMMON AND WHAT WE CAN DO TOGETHER

HIGHLINE FORUM PRESENTATION - MAY 22, 2013 | DAN TRIMBLE - CITY OF BURIEN

BURIEN WELLNESS

Purpose & Vision

Burien Wellness is a group of providers, educators and city government working together to bring you innovative, state-of-the-art healthcare! Burien has many health service providers who need highly-skilled employees. Local students need school programs to engage them and interest them in careers in the health and wellness fields. By working together, everyone succeeds. Jobs in the healthcare field offer excellent opportunity. Attracting talent, especially from our own community, provides living-wage jobs as well as access to quality healthcare for our residents and those from surrounding areas.

Burien Wellness promotes local business and strengthens educational and training opportunities that lead to job growth, improved access and overall wellness in our community. It builds durable, credible partnerships among members of the wellness community that contribute to economic development.

HEALTH SCIENCES HUMAN SERVICES HIGH SCHOOL PUGET SOUND SKILLS CENTER HIGHLINE COMMUNITY COLLEGE



WELLNESS, EDUCATION AND WORKFORCE – PARTNERING FOR SUCCESSES

HIGHLINE FORUM PRESENTATION - MAY 22, 2013 | DAN TRIMBLE - CITY OF BURIEN

PORT OF SEATTLE

WORKFORCE DEVELOPMENT PROGRAMS

Training for Career Advancement: Airport University (Partner: Port Jobs)

- 234 participants took courses such as computers, customer service and food handler permit preparation
- 108 participants earned college credits through the program

Apprenticeship Utilization (Partners: Many local contractors)

- 15 percent of all labor hours and over \$1 million in wages went to apprentices hired under port public works contracts
- 127 apprentices worked on these contracts
- 171 apprentices, who worked on these and prior years' contracts, graduated to Journey status

Pre-Apprenticeship & Apprentice Support (Partners: ANEW & Port Jobs)

- 212 community members received pre-apprenticeship and apprenticeship support
- 125 became registered apprentices
- New wages for families and communities: Over \$4 million

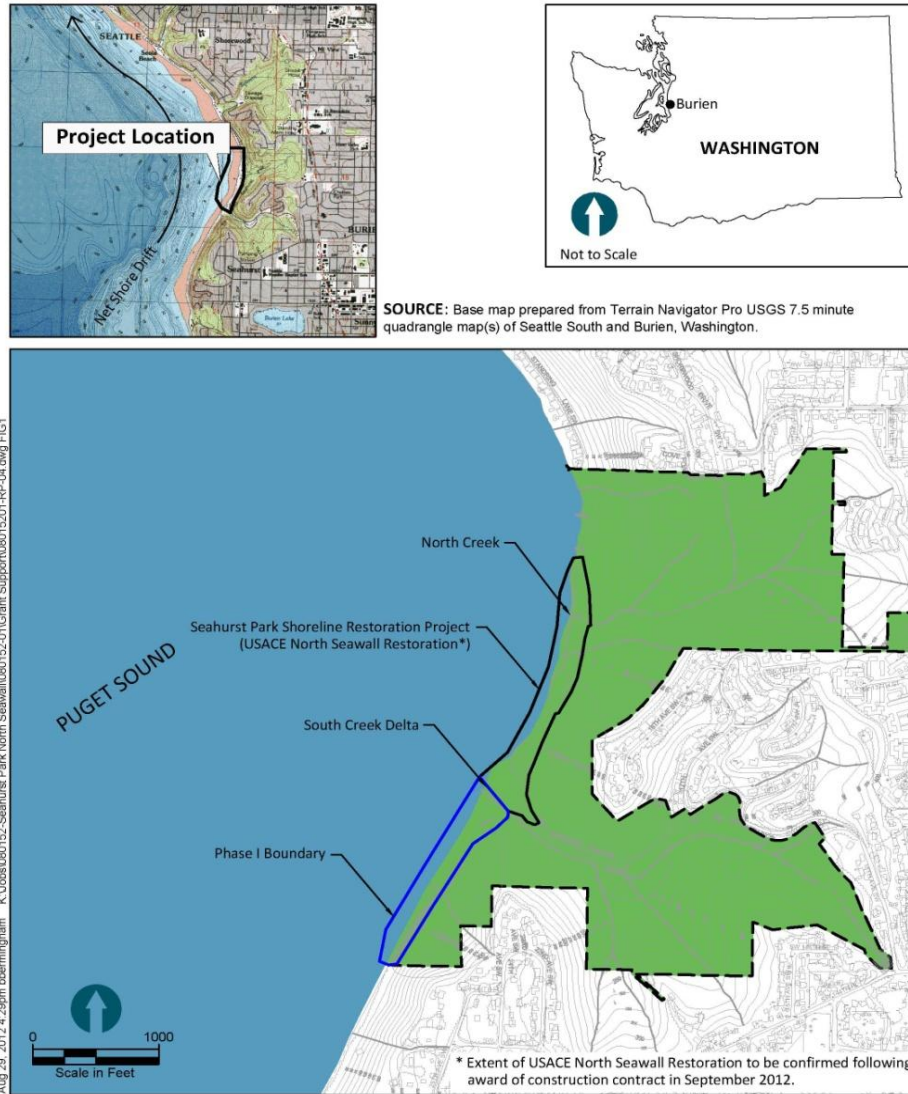
SEAHURST PARK NORTH SHORELINE RESTORATION 38



WHAT WE HAVE IN COMMON AND WHAT WE CAN DO TOGETHER

HIGHLINE FORUM PRESENTATION - MAY 22, 2013 | STEVE ROEMER - CITY OF BURIEN

Location Map



EXISTING SITE CONDITIONS NORTH SHORE



COMBINED PHASES 1 AND 2



North Shore Project Site

South Creek

South Shore Restoration

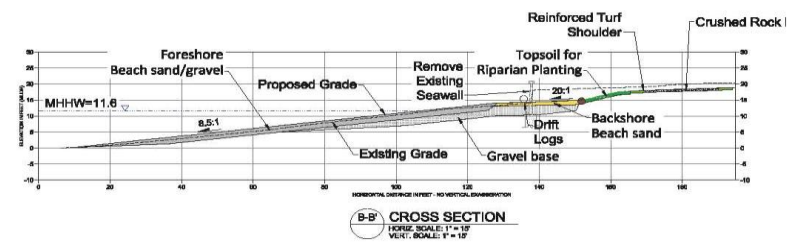
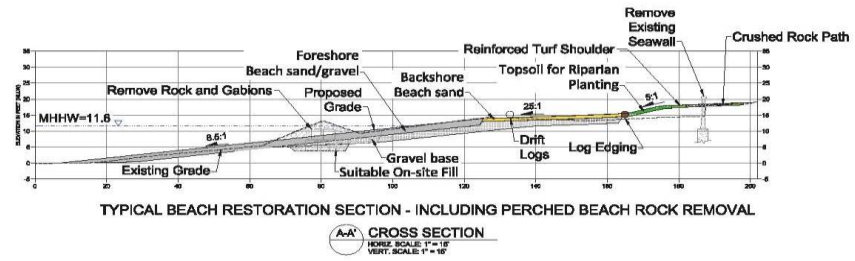
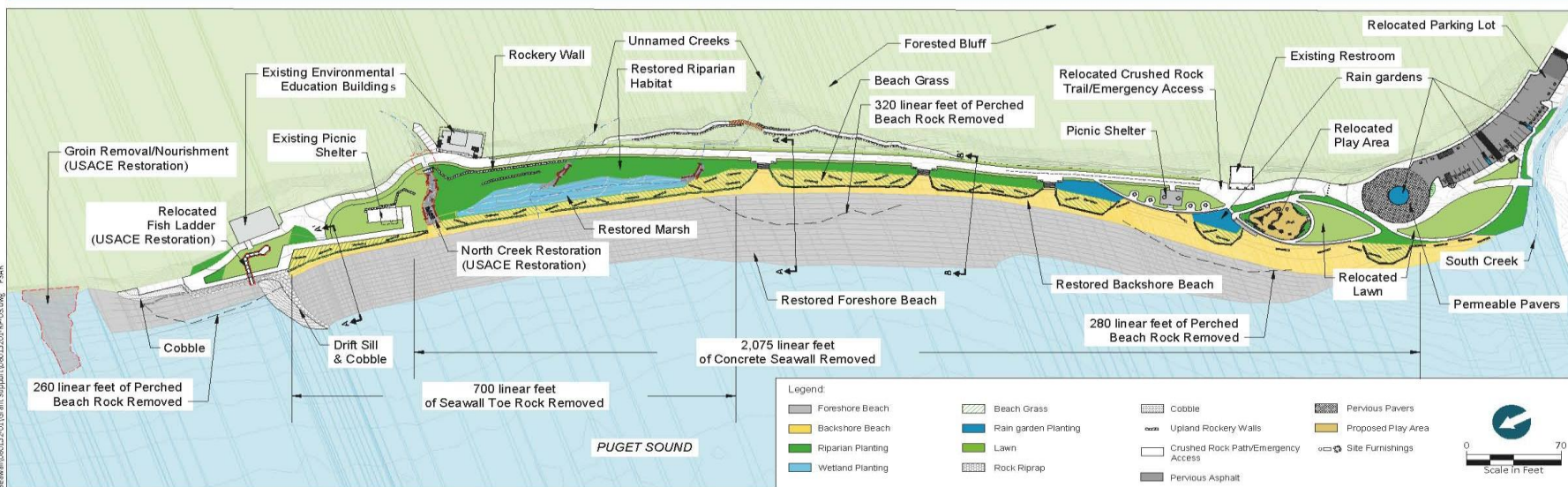
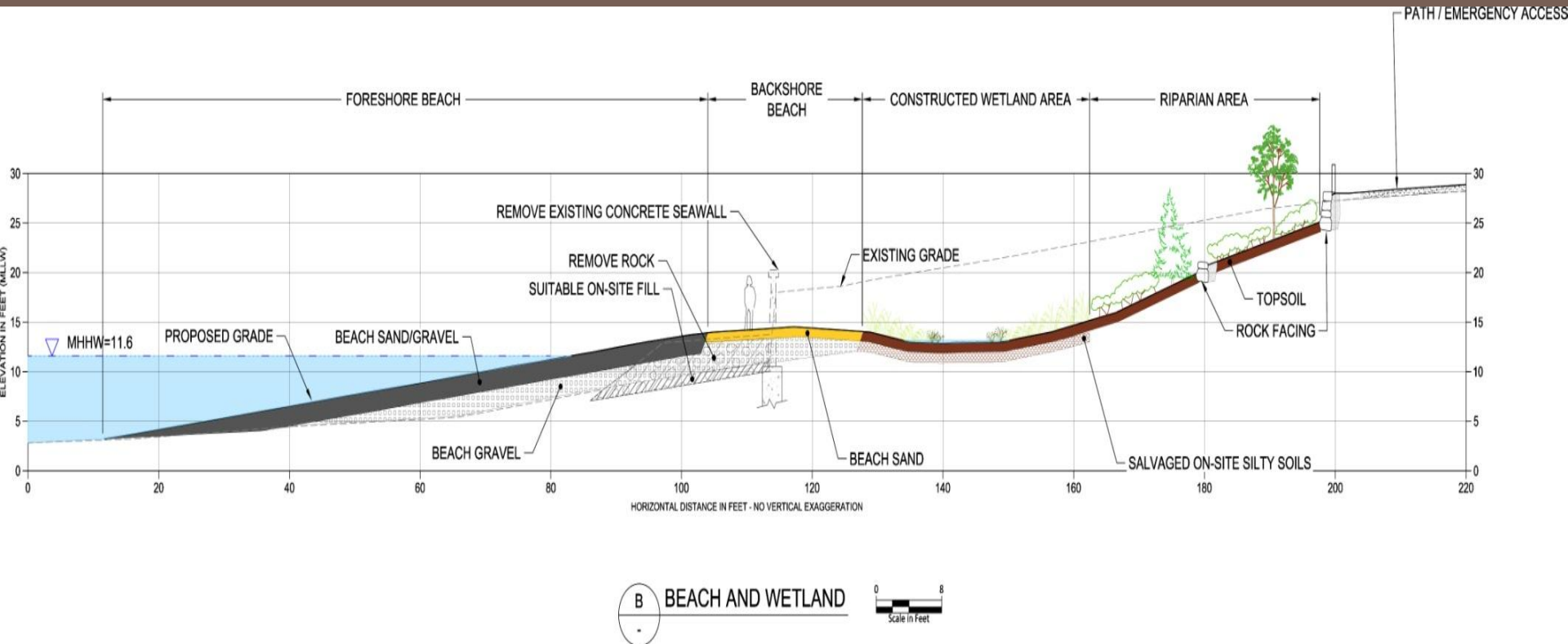


Figure 2
 Restoration Design
 Seahurst Park Shoreline Restoration Project
 PSAR Grant Application

DESIGN

Beach Section



PROJECT OBJECTIVES



PROJECT OBJECTIVES



SEAHURST PARK NORTH SHORELINE RESTORATION
HIGHLINE FORUM PRESENTATION – MAY 22, 2013 | STEVE ROEMER – CITY OF BURIEN

PROJECT BUDGET AND OUR PARTNERS

Task	Total Cost	PSAR	SRFB	ESRP/EPA	KCD	Burien	USACE?
Construction Phase	\$7,425,000	\$4,420,000	\$740,000	\$1,280,000	\$510,000	\$475,000	

SEAHURST PARK NORTH SHORELINE RESTORATION



Questions?

© Michael Brunk / nwlens.com

WHAT WE HAVE IN COMMON AND WHAT WE CAN DO TOGETHER

HIGHLINE FORUM PRESENTATION - MAY 22, 2013 | STEVE ROEMER - CITY OF BURIEN

CITIES, SCHOOLS AND THE PORT: WHAT WE HAVE IN COMMON AND WHAT WE CAN DO TOGETHER – THE ARGUMENT FOR REAL PARTNERSHIP

A HIGHLINE FORUM PRESENTATION
BY CITY OF BURIEN STAFF

May 22, 2013 | Burien City Hall