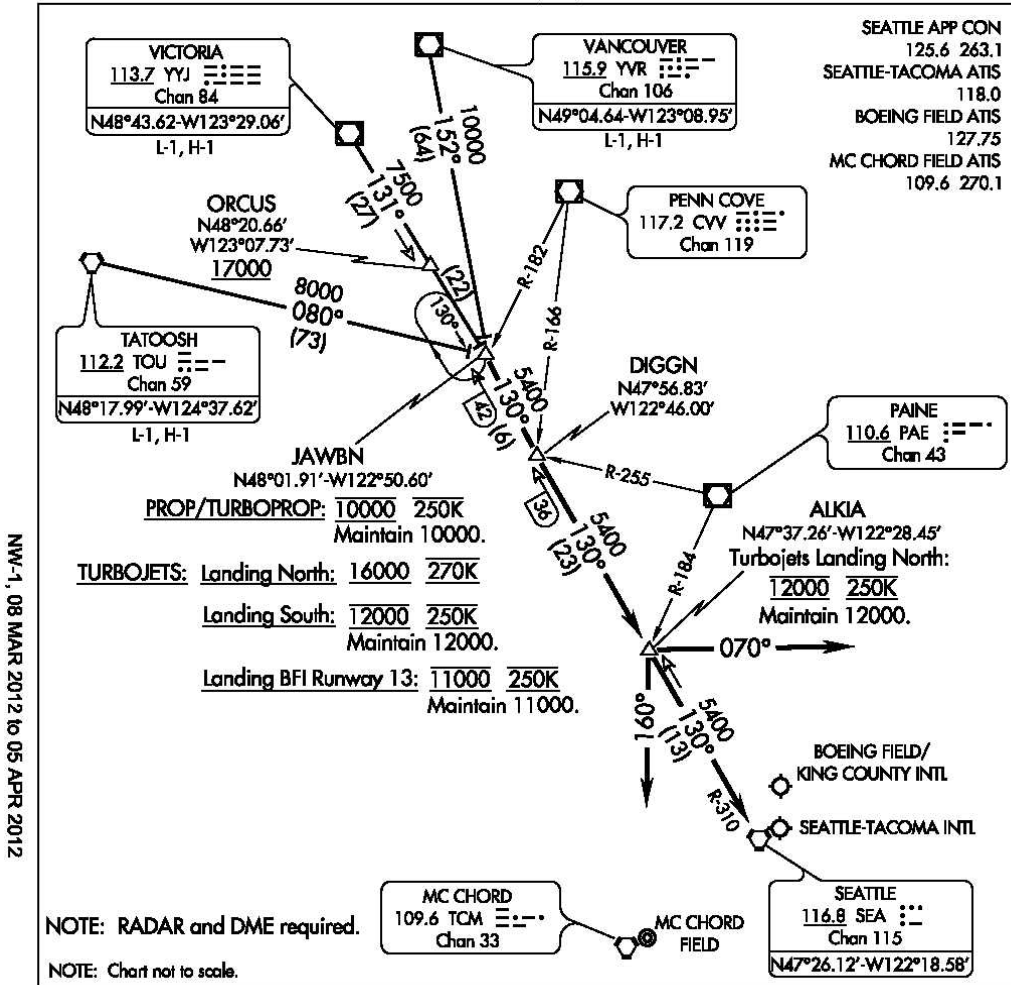


Appendix C CURRENT PUBLISHED APPROACH PROCEDURES AFFECTED BY THE PROPOSED ACTION

(JAWBN.JAWBN3) 11237
JAWBN THREE ARRIVAL ST-582 (FAA) SEATTLE, WASHINGTON



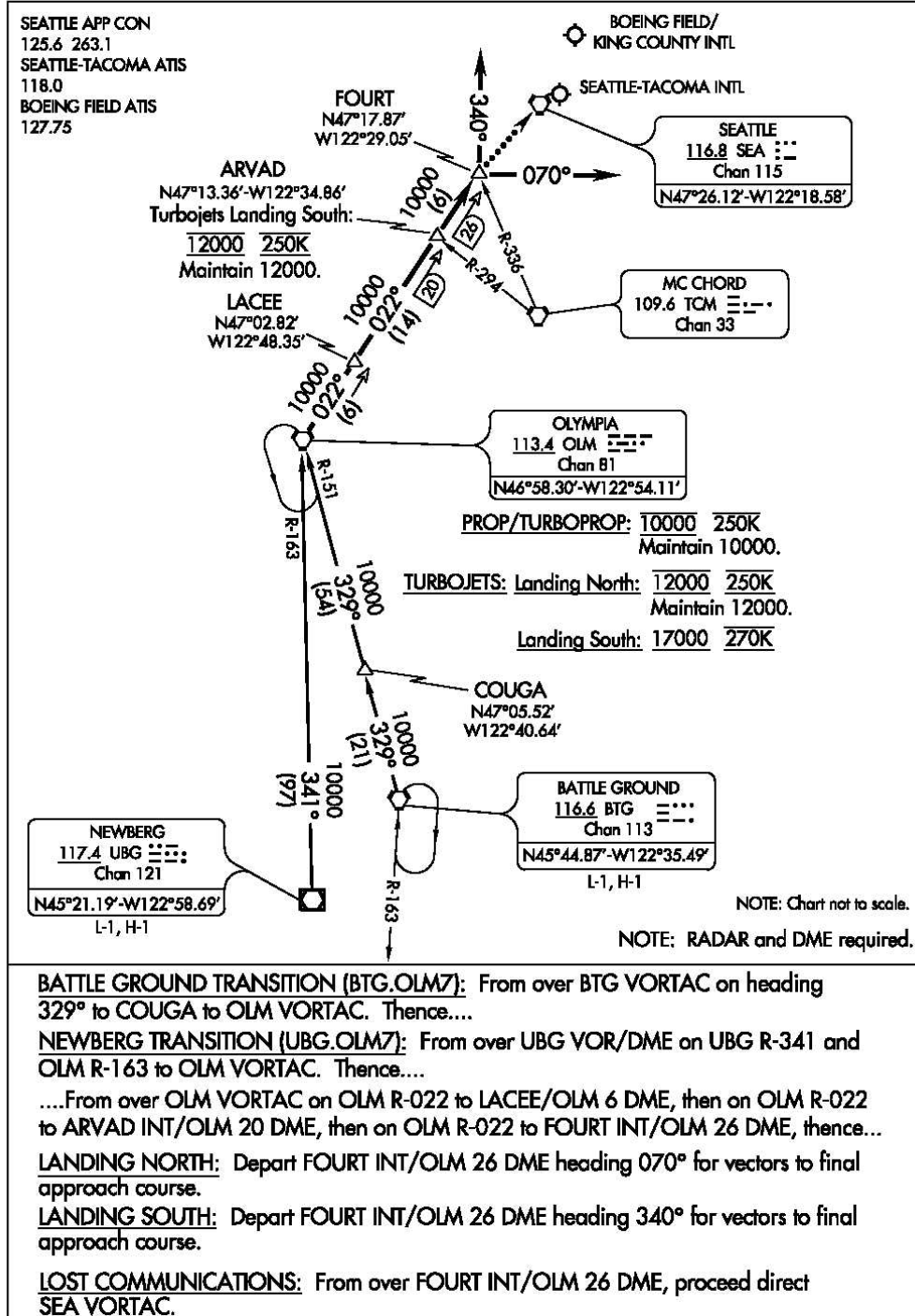
NW-1, 08 MAR 2012 to 05 APR 2012

NW-1, 08 MAR 2012 to 05 APR 2012

TATOOSH TRANSITION (TOU.JAWBN3): From over TOU VORTAC on TOU R-080 to JAWBN INT. Thence....
VANCOUVER TRANSITION (YVR.JAWBN3): From over YVR VOR/DME on YVR R-152 to JAWBN INT. Thence....
VICTORIA TRANSITION (YYJ.JAWBN3): From over YYJ VOR/DME on YYJ R-131 to JAWBN INT. Thence....
From over JAWBN INT/SEA 42 DME on SEA R-310 to DIGGN INT/SEA 36 DME then on SEA R-310 to ALKIA INT/SEA 13 DME, thence....
LANDING NORTH: Depart ALKIA INT heading 160° for vectors to final approach course.
LANDING SOUTH: Depart ALKIA INT heading 070° for vectors to final approach course.
LANDING McCHORD FIELD: After ALKIA INT proceed direct SEA VORTAC.
LOST COMMUNICATIONS: After ALKIA INT proceed direct SEA VORTAC.

JAWBN THREE ARRIVAL SEATTLE, WASHINGTON
(JAWBN.JAWBN3) 11237

(OLM.OLM7) 11013
OLYMPIA SEVEN ARRIVAL ST-582 (FAA) SEATTLE, WASHINGTON



NW-1, 08 MAR 2012 to 05 APR 2012

NW-1, 08 MAR 2012 to 05 APR 2012

OLYMPIA SEVEN ARRIVAL SEATTLE, WASHINGTON
(OLM.OLM7) 11013

(This page intentionally left blank)