



The Washington State Legislature passed House Bill 1110 to create new middle housing opportunities. According to PSRC analysis, an estimated 75,000 to 150,000 units could be created by the bill over a period of 20 years or more. The Washington State Department of Commerce received funding in the budget to support local communities implementing the zoning changes. The bill is an important step toward realizing the Regional Housing Strategy and providing homes for all the region's residents.

Message From the President and the Executive Director



**Councilmember
Claudia Balducci**
PSRC President

As we reflect on the work of the last year at the Puget Sound Regional Council (PSRC), the phrase *implementation with intention* comes to mind.

With the adoption of the Regional Transportation Plan last May, the update cycles of all three of the region's long-range plans are now in sync. The alignment of VISION 2050, the Regional Transportation Plan and the Regional Economic Strategy gives our work performance a strategic advantage that's reflected in the quality of our accomplishments this year.

We adopted a legislative agenda that advanced our core plans and programs and supported it with a wealth of information, including a housing public opinion survey and a state-of-the-art bill impact analysis. The state Legislature made unprecedented investments to create affordable housing and adopted a middle housing bill that will increase housing supply over time in the region.



Josh Brown
Executive Director

We hit the ground running with our new Regional Housing Strategy, offering up a knowledge base and toolset that local jurisdictions can use to tackle housing supply and affordability.

Our team has also been working hard to support local comprehensive plan updates with element guides and a series of Passport to 2044 webinars.

We secured a \$4.9 million grant to pursue a Regional Safety Plan as part of a larger work program to realize the Regional Transportation Plan, including a 2030 Climate Analysis and a new approach to PSRC funding that will strengthen equity in the region.

We hosted 60 government officials from all around the world to showcase the region's economic development assets as hosts to the Americas Competitiveness Exchange.

We made great strides towards the Regional Equity Strategy so that all aspects of our work program are leading with racial equity.

To celebrate all this, we brought back our awards program from its pandemic pause and honored seven projects from around the region with VISION 2050 Awards.

We are proud of the work we are all doing and honor the contributions of our members in making the region's long-range vision a reality.

King County Councilmember Claudia Balducci, PSRC President
Josh Brown, Executive Director

Working Toward a More Equitable Region

PSRC strives to advance racial equity to ensure that the region's vision for a prosperous and healthy future is possible for all people in the region.



PSRC was recognized with an [award from the National Association of Regional Councils](#) for its Equity Program. The award was one of 11 given out for regional achievements.

Equity Advisory Committee

The 19-member committee has been in place more than a year and has given feedback on the Regional Housing Strategy and the Regional Transportation Plan. The committee is working on criteria for the new Equity Pilot Program and helping to establish an online equity tracker.

Joint Board Workshops on Racial Equity

All PSRC board members are encouraged to attend these to become better equipped to effectively work with staff and each other as we weave racial equity into our work. Topics covered over three sessions include implicit bias, structural racism and how to talk about race. PSRC staff attend each training prior to the board session and provide feedback to refine the curriculum.



Joint Board Session on ACT (Affirm, Counter, Transform)

Transportation Funding

We established an equity criterion as part of the project selection process for PSRC's federal transportation funds that evaluates how projects address disparities and community engagement, and what policies are in place to minimize displacement. The board also adopted a new direct equity funding formula for our Federal Transit Administration distributions and created an Equity Pilot Program for a portion of our Federal Highway Administration dollars.



Northgate Station



Pike Place Market view decks

Racial Equity Action Plan Staff Groups

Each member of PSRC’s staff has joined a working group to examine how to make all elements of our work more equitable. Focus areas include hiring and retention, procurement, inclusive engagement, expanding data and analysis, and developing learning opportunities. The participation ethic has been transformative. Staff also include racial equity in their annual goals and workplans.

Compensation Policy

PSRC has established a new compensation policy to diversify participation in PSRC’s committees and develop a more holistic understanding of the issues communities face.

Planning Together for a Better Future

VISION 2050 is the region’s plan to create thriving communities, good jobs and a healthy environment as the region grows.

2023 Recommendations to the State Legislature

PSRC adopted recommendations to the Washington State Legislature. The recommendations support our core plans and programs to sustain and improve transportation funding, increase housing choices and affordability, significantly reduce greenhouse gas emissions and support a strong economy. Staff have regularly briefed the boards on the status of legislation related to these goals and provided in-depth analysis of bill impacts for legislators and our member.



Moving the Regional Housing Strategy Forward

PSRC has been working with cities, counties and other stakeholders to implement the Regional Housing Strategy, with a focus on providing resources and support for the 2024 local comprehensive plan update. Key tools include:

2022 Monitoring Report

The Monitoring Report of the first year of the strategy showed that households in the central Puget Sound region still struggle to find housing that fits their income in a competitive and expensive market. Rents and home values have risen steeply, while home ownership is less likely for Black and Hispanic/Latinx households. Middle density housing, which is often more affordable than other housing forms, is hard to find.

Statewide Housing Public Opinion Survey

We partnered with the Washington State Department of Commerce to conduct a statewide housing public opinion survey. The survey showed that housing costs and homelessness are the top issues in Washington state. Nearly 80% of respondents said they wanted more housing options for seniors, teachers, fire fighters and healthcare workers in their community. Those surveyed also strongly supported more diverse housing types, with almost 60% agreeing that multi-family housing like triplexes should be allowed in single-family zones when other standards like height and set-backs are met.

Housing Incentives and Tools Survey

PSRC also surveyed local jurisdictions about housing incentives and tools they are using. Many cities and counties reported that they are implementing strategies to improve housing affordability, like enacting the Multifamily Tax Exemption and reducing parking requirements. The survey results provide an understanding of policies in place across the region to address housing supply, stability and subsidy.

Housing Opportunities by Place

Recognizing that one strategy doesn't work for everyone, PSRC developed a place typology to help identify housing actions based on local conditions. A typology is a way to retain a commonality of approach regionally while tailoring recommendations to specific locations based on local needs and opportunities. It assesses existing community conditions and identifies appropriate tools and actions to support housing access and affordability now and as places change and grow.



New Stormwater Parks Guidance and Technical Support

The guide provides steps in planning a stormwater park, recommendations for integrating equity and maintenance considerations, and information on funding options. It also profiles stormwater parks that have been built in the region and includes lessons learned from them. Kirkland, Kitsap County, Lynnwood, Marysville, Puyallup and Woodinville received technical assistance to plan new stormwater parks as part of this project.

Comprehensive Planning Support

VISION 2050's multicounty planning policies, actions and regional growth strategy guide how and where the region grows through 2050, setting the stage for updates to countywide planning policies and local comprehensive plans done by cities and counties. PSRC created a number of resources to help support members and implement VISION 2050 through this work.

Passport to 2044 Series

PSRC teamed up with the Washington State Department of Commerce and the Municipal Research and Services Center to host a series of online workshops to support the comprehensive plan periodic updates. The sessions covered:



- Comprehensive Plan Workshop Series Kickoff
- Climate Change
- Economic Development
- Transportation
- Housing: Racially Disparate Impacts
- Equity Resources for Local Plans & Equitable Community Engagement
- Coordination with Tribes
- Planning for Critical Areas
- Transit-Oriented Development and Centers
- Housing: Need and Capacity
- Comprehensive Plan Overview for Elected Officials and Planning Commissions

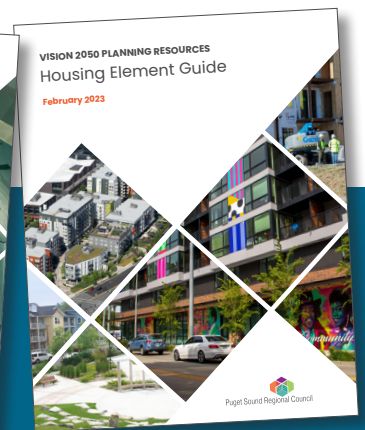
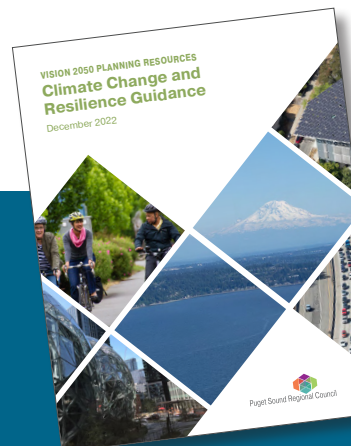


Kitsap County Manchester Stormwater Park

Guidance and Resources From PSRC

PSRC published several resources to help local jurisdictions with the various elements of their comprehensive plans. These included:

- Climate Change and Resilience Guidance
- Community Profiles Data Tool
- Coordination with Tribes in Comprehensive Planning
- Economic Development Element Guide
- Equitable Engagement for Comprehensive Plans
- Housing Element Guide
- Incorporating Transit-Oriented Development Into Comprehensive Plans
- Planning Stormwater Parks
- Transportation Guidance



VISION 2050 Awards – 2022 Winners

PSRC’s annual awards program has three categories: **On the Ground** to recognize completed projects, **Planning Ahead** to recognize the great planning happening in the region and **Working Together**, which recognizes the importance of partnerships.

On the Ground

Station House

Station House is a housing development for low- to moderate-income families directly adjacent to the Capitol Hill light rail station in Seattle.

Sponsored by Schemata Workshop, Sound Transit and Community Roots Housing

Arlington Drive Youth Campus

The campus is a 3.5-acre facility in Tacoma’s Salishan neighborhood providing housing, healthcare and supportive services for Tacoma’s most vulnerable youth and young adults.

Sponsored by Tacoma Housing Authority, SMR Architects, Korsmo Construction, Community Youth Services, The Social Impact Center of the YMCA of Greater Seattle, City of Tacoma, Pierce County, Washington State’s Office of Homeless Youth and the State of Washington Housing Trust Fund

Planning Ahead

Bellevue Mobility Implementation Plan

A new performance measurement and prioritization system that aligns transportation investments with the city and region’s land use vision based on supply and demand.

Sponsored by City of Bellevue



Renton's Permit Ready ADU Program

This program helps diversify and increase housing supply by providing residential property owners with resources to build accessory dwelling units, including free preapproved model base plans, technical assistance, an expedited permitting process and heavily reduced or waived administrative fees.

Sponsored by City of Renton and Jill Sousa Architects

South Lynnwood Neighborhood Plan

This neighborhood plan advances equity and seeks to help its diverse residents access opportunity through transit, housing affordability, connections between the community and decision-makers, and support for local business.

Sponsored by City of Lynnwood, BHC Consultants, BDS Planning & Urban Design, ECONorthwest and South Lynnwood Co-Design Committee



South Lynnwood Park SLNP Project Team



Midtown Square

Working Together

Health-in-all-policies Tools for Comprehensive Plans

Pierce County's work to identify policies to integrate health into comprehensive plan elements.

Sponsored by Tacoma-Pierce County Health Department and Pierce County

South King County Subregional Housing Action Framework

A joint project of six cities – Auburn, Burien, Federal Way, Kent, Renton and Tukwila – to develop a common housing planning framework for the South King County subregion.

Sponsored by South King Housing and Homelessness Partners and the cities of Auburn, Burien, Federal Way, Kent, Renton and Tukwila

Thank You to the 2022 Awards Selection Committee

- Shoreline Councilmember, Chris Roberts, Chair
- Dr. Anthony Chen, Director, Tacoma-Pierce County Health Department
- Port Orchard Mayor Rob Putaansuu
- Arlington Councilmember Jan Schuette
- Mountlake Terrace Mayor Pro Tem Bryan Wahl
- Tacoma Councilmember Kristina Walker

Keeping the Region Moving

PSRC keeps transportation funds flowing to the region and plans for the future of central Puget Sound's transportation systems.

PSRC Funding

The region adopted a \$5.4 billion draft Regional Transportation Improvement Program (TIP) that shows projects moving forward in the central Puget Sound region through 2026, funded by state, federal, regional and local funds. The TIP represents over \$34 billion in total transportation investments at project completion. This action included the projects selected for \$187 million of PSRC's 2025-2026 FHWA funds and an extra \$24 million made available through the annual FTA funding adjustment.

PSRC paused release of 2025-2026 FTA funds to support a review of funding distribution methodology to address questions related to equity and fairness. The Transportation Policy Board established an ad hoc FTA Funding Working Group to develop a recommendation on potential revisions to the methodology. The Executive Board adopted the working group recommendations in March, and PSRC will distribute FTA funding later this year using the modified approach, including a portion of funding distributed via a new direct equity funding formula.

PSRC also submitted regional priority rankings for the Washington State Department of Transportation's Consolidated Grant Competition. The Consolidated Grant Program distributes funding from a variety of federal and state sources for projects providing specialized transportation services, rural mobility improvements and other public transportation programs.



Regional Safety Plan

PSRC submitted a successful application to the U.S. Department of Transportation's Safe Streets and Roads for All (SS4A) Grant Program. The nearly \$4.9 million grant will support development of a Regional Safety Plan and local safety plans for Pierce County and the cities of Burien, Everett, Kent, Redmond and Tukwila. The new funding provided through the Bipartisan Infrastructure Law will help accelerate the statewide goal of reducing roadway fatalities to zero by 2030.

2030 Climate Analysis

The 2030 Climate Analysis examined the estimated greenhouse gas emissions from the planned 2030 regional transportation system compared to the region's climate goals. The analysis examined various levers such as different levels of a road usage charge, increases in electric vehicle sales and forecasted work from home levels. This work will inform and support development of a regional climate implementation strategy.



New Regional Electric Vehicle Collaborative Clearinghouse Website

The website was created in partnership with the Puget Sound Clean Air Agency to help local planners and decision makers find the resources needed to prepare for the influx of electric vehicles. This includes information on installing EV chargers, adding electrification aspects in updated comprehensive plans and codes, and learning about the benefits of EVs.

Sustaining a Strong Economy

PSRC works with partners on initiatives to strengthen the region's global competitiveness and increase economic opportunity.

Americas Competitiveness Exchange (ACE)

PSRC and the Washington State Department of Commerce welcomed 60 senior-level government, business, policy and economic decision makers from across the Americas to the Greater Seattle area to get a first-hand look at the region's economic, innovation and entrepreneurship ecosystem. This event was organized in partnership with Greater Seattle Partners, United States Economic Development Administration, International Trade Administration and Department of State. The ACE program is the premier economic development, innovation and entrepreneurial network for leaders from across North and South America. We are grateful for the support of the ACE visit by the Washington State Department of Commerce.



Governor Jay Inslee at Americas Competitiveness Exchange (ACE), Chateau Ste. Michelle Winery

Workforce Recovery Planning

PSRC provided actionable regional labor market information to a broad array of stakeholders on in-demand industries and occupations and related training programs to help the region recover from the economic impacts of the pandemic. The findings helped to identify four industries showing high demand for workers over the next decade: construction, manufacturing, healthcare and information. The final report identifies challenges and opportunities for increasing the talent pool diversity in these industries, as well as including recommendations to increase access among underrepresented groups. The project also identified a set of 12 occupations in the four industries that provide growing career opportunities with strong wages for workers in the region.



Chinatown-International District Dragon Festival

Arts and Culture Economic Recovery Strategy

The pandemic had a disproportionate impact on the region's arts and culture industry due to the in-person nature of activities and events that are critical to their business models and revenue streams. PSRC leveraged funding from the CARES Act to develop strategies to help the arts and culture industry and workforce build resiliency. The strategy guides the region toward a vision for arts and culture that is transformed, equitable and sustainable. It includes meaningful investment in cultural workers to recognize their unique and irreplaceable contributions to our society and economy and placemaking. The vision also emphasizes the need for a new business model for the arts, a sustainable one that enables collaboration for the greater good.

Regional Data and Forecasting

PSRC serves as a center for regional data and forecasts on housing, population, land use, transportation and the economy.

Heritage Month News Posts

PSRC has been analyzing data with the goal of understanding the state of the region's BIPOC community, sharing this information through a series of blog posts and Puget Sound Trends on access to transportation, housing and employment.

Performance Measures and Dashboard

PSRC is working to develop a performance dashboard for the Regional Transportation Plan. The goal is to monitor and report on various performance measures related to plan implementation including, but not limited to, emissions, safety, active transportation, finance, vehicle miles traveled and transit ridership.

Data Portal

PSRC debuted its new data portal last summer. The portal makes our most-requested regional GIS and tabular data easily accessible, explorable and downloadable.

Community Profiles Dashboard

The new dashboard provides member jurisdictions with a visual and easily viewable presentation of Census data from the 5-year American Community Survey in an accessible, web-based portal.



PSRC hackathon winners

Data Team Wins Hackathon

Our Data Science Team placed first in a national hackathon competition for the new Census Transportation Planning Products (CTPP) data application programming interface (API). The Data Team created a web-based application called CTPP explorer, which maps the commute mode data for the Puget Sound region.

Reaching out and Working Together

Regional coordination is key to creating a positive future for central Puget Sound. PSRC works to ensure that all voices are heard and reflect the communities we serve.

Bringing Transit-Oriented Development to the Region

PSRC joined ULI Northwest to host the Incentives for TOD: TIF and Other Financing Tools event. The event featured information about financing tools for equitable TOD, including tax increment financing (TIF), a financing tool that local governments use to fund public infrastructure in targeted areas to encourage private development and investment.

PSRC also hosted *TOD For All: Planning for 1 Million+ New People Near Transit* to help the region prepare for the new residents expected to live near high-capacity transit by 2050. This event featured walking tours of new light rail station neighborhoods and brought together industry and community leaders to explore innovative techniques and best practices for building and sustaining equitable transit communities that are accessible to all people and help achieve the region's vision for growth.

New Website

PSRC launched a new website featuring improved navigation, streamlined meeting information, and additional outreach and engagement tools.

The website was designed to be accessible and inclusive and can be translated into more than a hundred languages.



Kitsap Regional Connections Tour

Our Economic Development District Board hosted a Regional Connections Tour in Kitsap County, an all-day event that highlighted recent economic development efforts in Bremerton, Suquamish and Bainbridge Island.



Board members and staff on the tour at Puget Sound Naval Shipyard, Bremerton.
Photo: Wendy Hallmark, U.S. Navy.

Learning and Sharing at TOOLBOX Sessions

PSRC hosts peer networking events focused on best practices and resources for local planning and implementation. Recent topics included:

- June 24, 2022: Industrial Lands
- November 4, 2022: Advancing Equity, Health, and Resiliency with Stormwater Parks

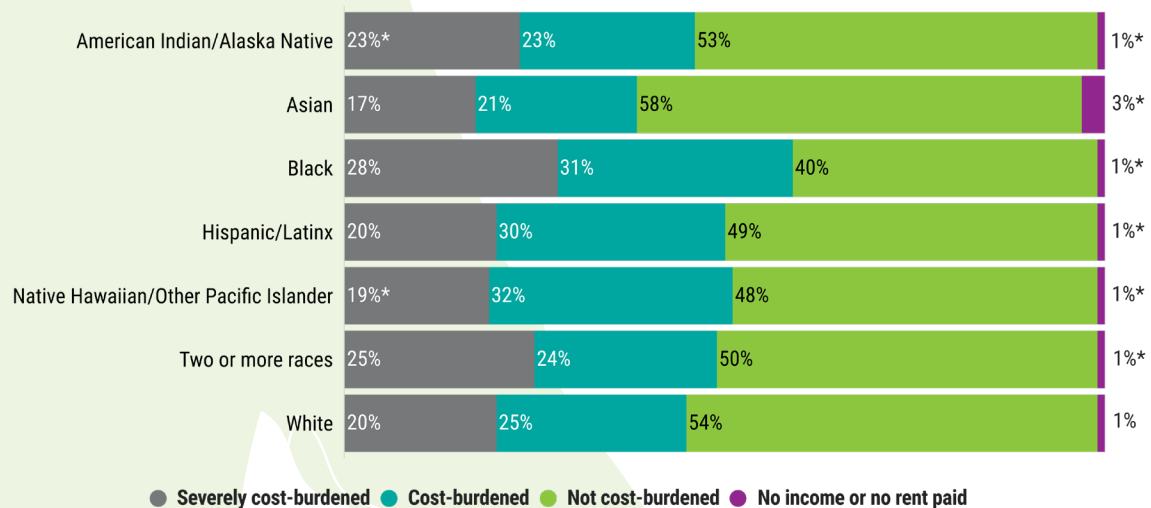


TOD event at Roosevelt Station

2022 Census Workshops

PSRC worked with the Census Bureau to host two online workshops covering a wide range of useful Census data products and resources for supporting local planning work, including new equity data resources, such as the COVID-19 Hub and the My Community Explorer.

Renter Cost Burden by Race/Ethnicity



Source: U.S. Census Bureau
 Detailed Source: American Community Survey 2020 5-Year Public Use Microdata Sample
 Note: *Estimate has large margin of error, use with caution

About the Puget Sound Regional Council

The Puget Sound Regional Council is the regional transportation, growth management and economic development planning agency serving the four-county central Puget Sound region. PSRC brings together elected leadership and regional partners to help the region flourish today and for the long term.



Our work includes:

- Long-range planning for transportation, economic development and growth management
- Selecting projects to receive PSRC's federal transportation funding and maintaining a four-year Regional Transportation Improvement Program
- Regional data analysis and forecasting

New Vision, Mission and Values

Inspired by the reconnection of being in person together at our annual staff retreat and the synergy of a leadership training for our staff, we worked as a team to revitalize our vision, mission and values:

Vision

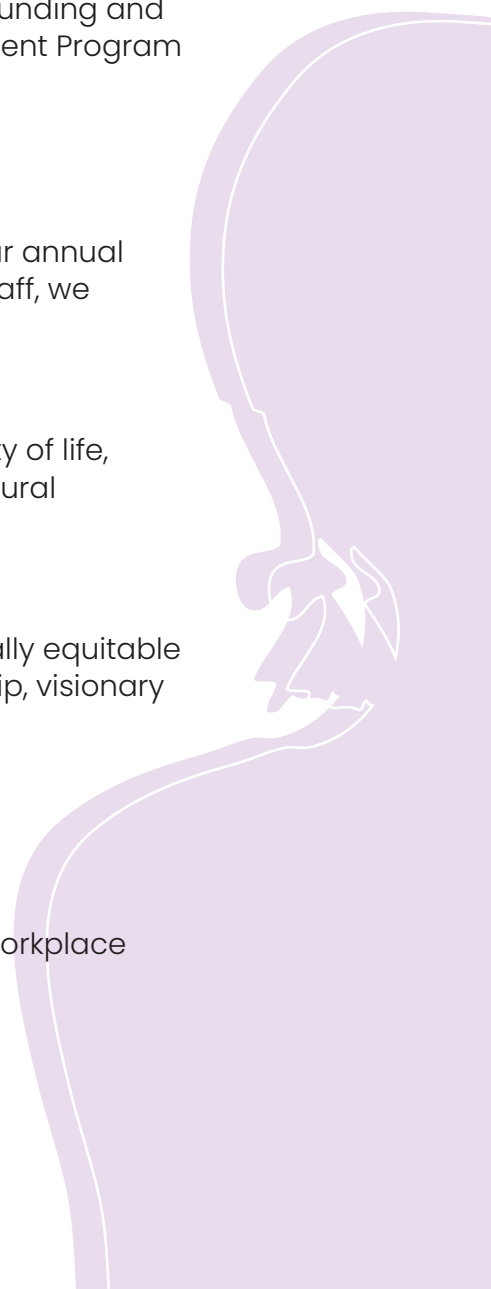
The central Puget Sound region provides an exceptional quality of life, opportunity for all, connected communities, a spectacular natural environment and an innovative, thriving economy.

Mission

Our mission is to advance solutions to achieve a thriving, racially equitable and sustainable central Puget Sound region through leadership, visionary planning and collaboration.

Values

- Lead with Racial Equity
- Act with Professionalism
- Foster Collaboration
- Pursue Excellence
- Serve as Stewards
- Cultivate a Fulfilling Workplace



Organization and Decision Making

The **General Assembly** is composed of all member jurisdictions and agencies. The General Assembly meets annually to vote on major decisions, approve the budget and elect new leadership.

Members of the **Executive Board** are appointed by their General Assembly constituents to represent the member governments. The Executive Board is chaired by the PSRC president, meets monthly and carries out delegated powers and responsibilities between meetings of the General Assembly.

The **Growth Management Policy Board, Transportation Policy Board** and **Operations Committee** make recommendations to the Executive Board.

PSRC also supports the work of the **Central Puget Sound Economic Development District**.

Clean Audit Streak Continues

PSRC received a clean audit result from the Washington State Auditor for 2022, the eleventh clean audit in a row. In the last 23 years, PSRC has had just one finding. The audit covered the financial statements for both PSRC and the Central Puget Sound Economic Development District, and accountability and federal grant compliance for PSRC.



Poulsbo Mayor Becky Erickson, PSRC Vice President, chairs the Operations Committee, which reviews and makes recommendations to the Executive Board on the budget and work program, and on contracts and other financial and personnel issues

Federal Certification Review

PSRC successfully met the requirements of a certification review by the Federal Highway Administration and Federal Transit Administration in 2022. The certification report included commendations for PSRC's work, complimenting:

- VISION 2050, for the connection it makes between future growth and projects.
- Planning for electric vehicle infrastructure to leverage current and future funding opportunities, reduce GHG emissions and have a continuous network of charging availability for the general public.
- The Regional Transportation Improvement Program's tracking tool, which allows PSRC to be proactive in noting any future project delays and encourages the efficient management of federal funds between projects.
- The Public Participation Plan for being "robust, thoughtful, and intentionally inclusive."

Budget and Funding Sources

The Puget Sound Regional Council’s proposed biennial budget for fiscal years 2024–2025 (July 1, 2023–June 30, 2025) is \$32 million. The agency’s work program is funded by a combination of federal and state grants, dues paid by PSRC members and by other local sources.

In 2023, PSRC received a Distinguished Budget Award for the sixth year in a row from the Government Finance Officers Association, which “reflects the commitment of the governing body and staff to meeting the highest principles of governmental budgeting.”



Puget Sound Regional Council Membership

COUNTIES — King County, Kitsap County, Pierce County, Snohomish County

CITIES — Algona, Arlington, Auburn, Bainbridge Island, Beaux Arts Village, Bellevue, Black Diamond, Bonney Lake, Bothell, Bremerton, Buckley, Burien, Carnation, Clyde Hill, Covington, Darrington, Des Moines, DuPont, Duvall, Eatonville, Edgewood, Edmonds, Enumclaw, Everett, Federal Way, Fife, Fircrest, Gig Harbor, Granite Falls, Hunts Point, Issaquah, Kenmore, Kent, Kirkland, Lake Forest Park, Lake Stevens, Lakewood, Lynnwood, Maple Valley, Marysville, Medina, Mercer Island, Mill Creek, Milton, Monroe, Mountlake Terrace, Mukilteo, Newcastle, Normandy Park, North Bend, Orting, Pacific, Port Orchard, Poulsbo, Puyallup, Redmond, Renton, Roy, Ruston, Sammamish, SeaTac, Seattle, Shoreline, Skykomish, Snohomish, Snoqualmie, Stanwood, Steilacoom, Sultan, Sumner, Tacoma, Tukwila, University Place, Wilkeson, Woodinville, Woodway, Yarrow Point

TRIBES — Muckleshoot Indian Tribe, Puyallup Tribe of Indians, The Suquamish Tribe, Tulalip Tribes

STATUTORY MEMBERS — Port of Bremerton, Port of Everett, Port of Seattle, Port of Tacoma, Washington State Department of Transportation, Washington Transportation Commission

ASSOCIATE MEMBERS — Alderwood Water & Wastewater District, Cascade Water Alliance, Port of Edmonds, Island County, Puget Sound Partnership, Snoqualmie Tribe, Thurston Regional Planning Council, University of Washington, Washington State University

TRANSIT AGENCIES — Community Transit, Everett Transit, Kitsap Transit, Metro (King County), Pierce Transit, Sound Transit

Funding for this document provided in part by member jurisdictions, grants from U.S. Department of Transportation, Federal Transit Administration, Federal Highway Administration and Washington State Department of Transportation. PSRC fully complies with Title VI of the Civil Rights Act of 1964 and related statutes and regulations in all programs and activities. For more information, or to obtain a Title VI Complaint Form, see <https://www.psrc.org/about-us/title-vi>.

American with Disabilities Act (ADA) Information

Individuals requiring reasonable accommodations may request written materials in alternate formats, sign language interpreters, physical accessibility accommodations, or other reasonable accommodations by contacting the ADA Coordinator, **Thu Le**, at **206-464-6175**, with two weeks' advance notice. Persons who are deaf or hard of hearing may contact the ADA Coordinator, Thu Le, through TTY Relay 711.

Additional copies of this document may be obtained by contacting:

**Puget Sound Regional Council
Information Center**
1011 Western Avenue, Suite 500
Seattle, Washington 98104-1035
206-464-7532 | info@psrc.org | www.psrc.org

