



APRIL 25, 2013 Puget Sound Regional Council **ANNUAL REPORT**

APRIL 25, 2013

Puget Sound Regional Council

ANNUAL REPORT

Funding for this document provided in part by member jurisdictions, grants from U.S. Department of Transportation, Federal Transit Administration, Federal Highway Administration and Washington State Department of Transportation. PSRC fully complies with Title VI of the Civil Rights Act of 1964 and related statutes and regulations in all programs and activities. For more information, or to obtain a Title VI Complaint Form, see <http://www.psrc.org/about/public/titlevi> or call 206-464-4819.

American with Disabilities Act (ADA) Information:

Individuals requiring reasonable accommodations may request written materials in alternate formats, sign language interpreters, physical accessibility accommodations, or other reasonable accommodations by contacting the ADA Coordinator, Thu Le, at 206-464-6175, with two weeks advance notice. Persons who are deaf or hard of hearing may contact the ADA Coordinator, Thu Le, through TTY Relay 711.

Additional copies of this document may be obtained by contacting:

Puget Sound Regional Council
Information Center
1011 Western Avenue, Suite 500
Seattle, Washington 98104-1035

206-464-7532 • FAX 206-587-4825 • info@psrc.org • psrc.org

— ❖ **Learn more at psrc.org** ❖ —

ON THE COVER — Chambers Bay Golf Course — *The United States Golf Association announced this year that Chambers Bay Golf course in University Place will host the U.S. Open in 2015. Owned by Pierce County, the 250-acre golf course is located within a 950-acre park bordering Puget Sound, on a site that was formerly a sand and gravel quarry.*





Message

from the President and the Executive Director

Despite uncertain economic times in recent years, the long-term outlook for the region is a good one.

That's the message from PSRC's newly updated population and employment forecasts: By 2040, close to 5 million people will live in the central Puget Sound region, and jobs are expected to grow to 2.9 million.

At the PSRC, we're continuing to work in many different ways to help the region get prepared for growth. Our approach integrates economic development, transportation, environmental and land use planning to create vibrant, healthy communities all around central Puget Sound.

Our role is to provide the planning and data, the coordination, and funding that helps move our priorities forward.

Through this annual report, we invite you to take a tour of many of the good things that happened in the region in 2012. The region is making progress in building the transportation infrastructure needed to support economic development and quality of life, enhancing city centers and neighborhoods through public investments, and investing in people through higher education and workforce development.

Some of the highlights:

- PSRC selected projects to receive more than \$442 million in PSRC federal transportation funds that benefit people traveling in the central Puget Sound.
- We launched a new Regional Economic Strategy in sync with the state's Working Washington strategy, focusing on top industry clusters.
- The region and state worked successfully on sustaining and growing the aerospace industry, helping to secure production of the new Boeing 737 MAX airplane and expanding opportunities for students to get training in aerospace manufacturing and meet industry demand for workers.
- PSRC approved a \$7.9 billion Transportation Improvement Program for the next four years.
- Growing Transit Communities is helping cities plan for new stations and encourage thriving neighborhoods that will benefit everyone who lives and works close to new light rail and rapid transit.
- Local governments are adopting their new population and employment forecasts to guide comprehensive plan updates, and these are helping to implement VISION 2040.

To be successful, we depend on the many talented and committed elected officials, staff and people of the region to engage in our work at the regional level. There is a lot more to come in 2013 and we look forward to working with you on creating a bright future for central Puget Sound.



Josh Brown
KITSAP COUNTY COMMISSIONER
PSRC PRESIDENT



Bob Drewel
PSRC EXECUTIVE DIRECTOR

LOCAL BUS

14

TO N. 24th & PROCTOR



581.8000
piercetransit.org

Improving Transportation

PSRC helps keep the region moving through planning and funding for a sustainable transportation system.

Puget Sound Regional Council

SEARCH

About Growth Management Transportation Economic Development Funding Data

Home » Transportation » Transportation Improvement Program » TIP Map - Monthly Amendment » Pierce County TIP Map

planning for effective transportation

TRANSPORTATION
 Transportation 2040
 Transportation 2040 Update
TIP
 Current TIP
 Amendments
 Project Selection
 Project Tracking
 TIP Reference
 Air Quality and Climate Change
 Congestion and Mobility Planning
 Commute Trip Reduction
 Electric Vehicle Readiness
 Intelligent Transportation Systems
 Freight Mobility / FAST
 Bicycle and Pedestrian
 Congestion Management Process
 Passenger Ferry Study
 Traffic Choices Study
 Air Transportation
 Special Needs
 Transit
 Transportation Policy Board

Pierce County TIP Map

PSRC Approves \$7.9 Billion Transportation Improvement Program

In October 2012, PSRC advanced the region's Transportation Improvement Program, ensuring that hundreds of major projects will move forward over the next four years.

PSRC's web map shows proposed projects by geographic area.

Project Data

Title: Church Lake Road West Overlay Project

Sponsor: Bonney Lake

Project ID: BON-10

Location: Church Lake Road

Description: The project is part of the City's Maintenance Overlay program. The project will resurface the existing pavement of Church Lake Road from Veterans Memorial Drive to Evergreen Drive with a two inch asphaltic pavement overlay. This section of road is a two lane road averaging 22 feet in width.

Total Project Cost: \$187,000

Improvement Type: Preservation/Maintenance/Reconstruction

Financial Data:						
Phase	Year	Federal Funding Type	Federal Funding	State/ Local Funding	Other Funding	Projected Obligation Date
CN	2013	STP(U)	\$161,755	\$25,245	\$0	9/1/2013

PSRC Funding Flows to Key Projects

PSRC selects projects through a competitive process to receive a portion of federal funds that come to the region. In 2012, PSRC directed \$442 million to projects that will benefit people traveling all around the central Puget Sound.

The PSRC funding awards ranged in size from \$50,000 to purchase right of way to improve public access to Tacoma's Thea Foss Waterway to \$67 million to help replace King County Metro's aging electric trolley fleet.



Browse > Home / Local News / Group recommends funds for Issaquah-area road projects

Group recommends funds for Issaquah-area road projects

Kitsap Sun

News Sports Business Opinion Entertainment Lifestyles Media

Local News Blogs Databases Events Submit Code 911 Communities Weather Obituaries

Funds nearly en route to Bucklin Hill Bridge, other projects

Lake Stevens JOURNAL

Home News Sports Opinions Business Columns Entertainment Calendar Advertise Contact Us Visit Us

Marketplace: Classifieds | Business Directory | Church Directory | Coupons | Search:

County scores federal funding for road projects

Published on Fri, Nov 16, 2012 by Staff [Like](#) [Tweet](#) [Share](#)

[Read More County & State](#)

Snohomish County and its partner cities and agencies have been awarded more than \$31 million in the 2012 federal transportation funding round recently completed by the Puget Sound Regional Council.

Along with required local matches, this funding will allow for \$45 million in road repairs and improvements and transit service throughout Snohomish County.

Shoreline-Lake Forest Park Patch 54°

Government

Puget Sound Regional Council Recommends \$6.9 Million in Transportation Funding for Shoreline

Money is part of \$440 million in federal funds proposed by PSRC to improve transportation around the region
September 13, 2012

[Recommend](#) (3) [Tweet](#) (1) [Email](#) [Print](#) [1 Comment](#)

SEATTLE – The Puget Sound Regional Council is recommending \$6.9 million in funding for projects in Shoreline, part of more than \$440 million in federal funds proposed by PSRC to improve transportation around the region.

Projects in the Shoreline area include:

- Aurora Ave N (SR-99), N 192nd St to N 205th St - \$3,411,665
- N 175th Street Overlay Preservation Project - Mirvale Avenue N to I-5 - \$190,299



REPORTER

COVINGTON | MAPLE VALLEY | BLACK DIAMOND

Home News Calendar Blogs Sports Entertainment Business Lifestyles Community

Jobs Autos Homes Rentals Classifieds Coupons Green Editions Legal Notices

Regional Transportation Improvement Program approved | \$7.9 billion in planned projects

Bonney Lake-Sumner Patch 43°

Breaking: White River Forest Land Deal Would Protect 43,000 Acres East of Enumclaw »

Government

Puget Sound Regional Council Recommends Transportation Funding for Bonney Lake, Sumner and Puyallup

The Puget Sound Regional Council is recommending \$5.7 million in funding for transportation improvements in East Pierce County over the next five years.

By Bonney Lake & Sumner Patch Staff | Email the author | September 13, 2012

“When Congress approved these funds earlier this year, their focus was on growing and sustaining jobs. These projects, large and small, will both put people to work and shore up the foundations of our economy for the future.”



— BELLEVUE COUNCILMEMBER **Claudia Balducci**, CHAIR OF PSRC'S TRANSPORTATION POLICY BOARD



Special Needs Transportation



Special needs transportation services received awards totaling more than \$624,000 in 2012. PSRC manages a set of federal funds that help older, disabled or low-income people get around. Some of the projects funded in 2012:

- Catholic Community Services of Western Washington: Disabled Veteran's Transportation, \$21,141
- Pierce County Community Service: Beyond the Borders, \$60,598
- Senior Services of King County: Preserve the Hyde Shuttle, \$90,792

PSRC Funding in Action



Wayne Curve on SR 522 in Bothell

The first stage of the Wayne Curve Improvements along SR 522 in Bothell was completed in 2012, easing congestion, adding lanes for transit, and improvements for pedestrians. The project received \$10.6 million from PSRC.



Tacoma's Pacific Avenue Streetscape

Tacoma is transforming historic Pacific Avenue through its downtown. The project will add new sidewalks, street lighting, paving, bike sharrows, green stormwater infrastructure, public art, and new landscaping. PSRC awarded \$800,000 for the project in 2012.



Curley Creek Bridge in Kitsap County

The new Curley Creek Bridge in Kitsap County (formerly the Southworth Bridge) opened in March 2012, replacing a crumbling 82-year-old span. The new bridge features wider lanes with 5-foot bike lanes, 5-foot shoulders, and viewing platforms. It received \$875,000 in PSRC funding.



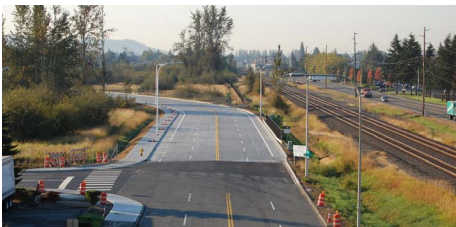
Pacific Highway South HOV Lanes

With the completion of the fourth phase of the Pacific Highway South HOV lanes, commuters and buses can now travel from Federal Way to Sea-Tac Airport in continuous HOV lanes. Since 1995, the entire Pacific Highway South corridor has received more than \$50.9 million in PSRC funding for HOV lanes.

“With 35,000 vehicles using this road daily, Phase IV makes travel safer, more efficient for Federal Way residents and for the region.” — **FEDERAL WAY MAYOR Skip Priest**

Centennial Trail Extends from Snohomish to Skagit County

The Centennial Trail now stretches 30 miles from the Skagit County border through Arlington, Lake Stevens and Snohomish, with the completion of the northernmost section of the trail in 2012. Development of the trail began in 1989 during the state’s centennial and is built along the old Burlington-Northern Railroad line. The bike and pedestrian trail has been built in sections and has received a total of \$1.45 million in PSRC funds over the years.



Auburn’s New A-B Street Corridor Connector Opens

In December, Auburn opened the new A-B Corridor, linking the city’s downtown to its north end. The 1.47-mile route links A Street downtown to the 3.5-mile B Street Northwest corridor. The project received \$900,612 in PSRC funding.



Sounder Commuter Rail Extends to Lakewood

Five Sounder commuter rail round trips on weekdays between Lakewood, South Tacoma, and Seattle started in October 2012. The extension from Tacoma to Lakewood received \$12.1 million in PSRC funding.



“No economic strategy would be complete without a transportation plan that facilitates this growth.” — GOVERNOR Jay Inslee

Updating Transportation 2040

Transportation 2040 is the region’s award-winning, long-range plan for transportation that was adopted in 2010. Every four years, PSRC is required to update the plan to reflect new information, policies, and data. In 2012, significant work on the 2014 plan update got underway, including:

- A new project prioritization method
- New financial plan
- Maintenance and preservation of the existing transportation system
- Coordinated transit and human services plan update
- Commute Trip Reduction program update
- Active transportation plan
- Rural transportation

Prioritizing Projects

Transportation 2040 includes a commitment to better prioritize transportation investments to achieve the region’s growth strategy, VISION 2040. Since 2011, PSRC’s elected leadership and staff have been working on a new framework for prioritization that gives a greater level of detail about the benefits and costs associated with transportation projects. The prioritization method will be incorporated in the 2014 update of Transportation 2040.



Growing the Region's Economy



The Husky marching band cheers the Prosperity Partnership and Congressman Norm Dicks, who was honored for his career and years of service to the region and state.

Kicking Off the New Regional Economic Strategy

Hundreds of business, government and community leaders gathered at the annual Prosperity Partnership luncheon in November. At the event, the region launched a fresh new Regional Economic Strategy, providing renewed commitment and identifying actions to grow jobs and economic activity throughout central Puget Sound.



“You may retire
But don't be lazy...
Give us your number
So we can call you maybe”



KIRO radio's Dave Ross sings a version of “Call Me Maybe” to Congressman Dicks.



COUNCILMEMBER Dave Gossett, SNOHOMISH COUNTY; PRESIDENT, ECONOMIC DEVELOPMENT DISTRICT

The Prosperity Partnership is a coalition of business, labor, education and community organizations, all working together to build long-term, sustainable economic prosperity for the central Puget Sound region.



Supporting the Region's Military Economy

The region is home to over 59,000 active duty military personnel, along with their families. The region's military economy employs more than 91,000 people — more than double the national average.

The Prosperity Partnership is working with a broad coalition of government, labor and veterans associations on things that help military families thrive here and ease their transition into civilian life. Past successes have included changes in state regulations that ease commercial driver's license certification for truck drivers trained in the military.

Sustaining and Growing the Aerospace Industry

In 2009, the Prosperity Partnership helped launch the Washington Aerospace Partnership — a group of business, labor and local government leaders working to sustain and grow aerospace industry jobs in Washington.

In 2012, business, labor and government leaders rallied to ensure Washington state was well-positioned to secure production of the new Boeing 737 MAX airplane. Aerospace was also a priority during the 2011-2012 legislative sessions, with successful legislation expanding opportunities for students to get training in aerospace manufacturing and meet industry demand for workers.

New UW/WSU Aerospace Technology Center

New legislation established a joint effort between the University of Washington and Washington State University. The new Aerospace Technology Center will pursue research, enhance student

learning, and work with aerospace firms of all sizes to identify research needs.

“I think it’s a huge step for higher education in our state. It’s been two decades in which we’ve been talking about the need for access to higher education in Everett and Snohomish County. Now it’s becoming a reality.” — Dr. Elson Floyd, WSU PRESIDENT

New Engineering Degrees in Everett

A group of 25 mechanical engineering students began their Washington State University studies for the first time on the Everett Community College campus in fall 2012.



The program came about as part of a state initiative that allocated \$3.8 million each to both WSU and the University of Washington to increase engineering and computer science graduates and to address a critical shortage of engineers in Washington.

The support will result in a more than 30 percent increase in students throughout WSU’s engineering programs.

Prosperity Tours

PSRC organized three popular Prosperity Partnership tours to learn more about the region’s economic clusters. In June, the Prosperity Partnership hosted a tour focused on the region’s **maritime industry**. In September, leaders toured the economic landscape of **Kitsap County**, learning about the thriving technology, manufacturing, maritime and cultural tourism in the county.

On the **Aerospace Industry Cluster Tour**, attendees visited Boeing’s Renton plant and heard details about the 737 MAX and 787 Dreamliner, and toured regional aerospace training facilities and other major industry suppliers.



Planning for a Thriving Region

PSRC's mission is to help the region get ready for the future, planning for people and communities, economic prosperity and a healthy environment.

Growing Transit Communities



**Dave Somers, SNOHOMISH
COUNCILMEMBER
CHAIR, GROWTH MANAGEMENT
POLICY BOARD**

Over the next 20 years, more people and places in the region will benefit from new light rail and regional rapid transit. PSRC is leading the Growing Transit Communities partnership to help cities plan for new stations and encourage thriving neighborhoods that will benefit everyone who lives and works close to new transit stops.

July 2012 marked the halfway point of the Growing Transit Communities Partnership three-year effort that is funded by a grant from the U.S. Department of Housing and Urban Development's Sustainable Communities Regional Planning Grant Program. The partnership shifted its focus from data collection and analysis to recommending actions. Following are a few highlights from the Growing Transit Communities work in 2012.





Transit-Oriented Development Market Study

Growing Transit Communities published an analysis of current market conditions and recent trends in and around the 74 light rail station areas and other transit nodes.

Fair Housing and Equity Summit

Over 60 representatives from cities, counties, and non-profit organizations gathered on June 28 for a Regional Fair Housing and Equity Summit at the Mercer Island Community Center to discuss options for a coordinated regional analysis of access to fair housing.

Implementation Strategies Workshop



Community members, stakeholders and policy makers gathered at the Growing Transit Communities Partnership Implementation Strategies Workshop on October 30 at the Seattle Center. Over 150 participants discussed strategies to accommodate growth, provide more housing choices, and increase access to opportunity for current and future residents.

Increasing Community Engagement

Eight community-based proposals, representing a range of projects in King, Pierce and Snohomish counties, received funding in the third round of the Growing Transit Communities Equity Grant Program. This represents an investment of \$105,000, and a total investment of \$378,374 to organize and increase participation of historically underrepresented communities and give voice to community priorities.

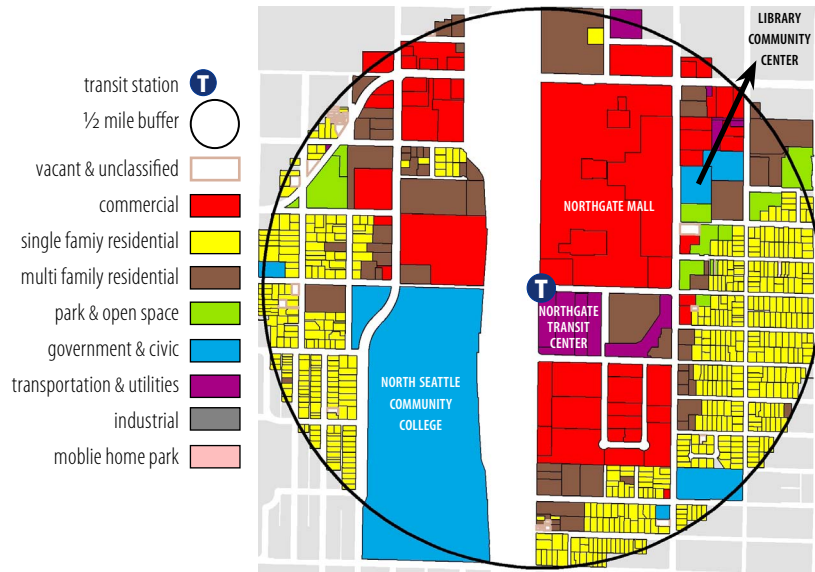
Characteristics and Needs of Transit Areas — Typology

Growing Transit Communities developed a report classifying 74 study areas that tells a story of each community's attributes and needs.

Understanding Existing Conditions

An Existing Conditions Report on the east, north and south corridors was published to increase understanding of current conditions and trends in the region's transit communities.

Northgate Land Use



Northgate Station Improvements Approved

The Sound Transit Board approved plans for a Northgate Station Area access study and committed \$10 million to pedestrian and bicycle access improvements, including a pedestrian bridge over I-5. These investments are consistent with the Growing Transit Communities demonstration project to redevelop the Northgate station area.



PSRC certified the transportation element of Tacoma's latest comprehensive plan update in 2012. It was one of 19 plans that were certified by PSRC in 2012. The agency is responsible for ensuring that local plans are consistent with VISION 2040 and the state Growth Management Act.



Landscape Conservation and Local Infrastructure Program

In 2012, PSRC allocated the total number of transfer of development rights to eligible cities. This was one of the first steps to implement the new Landscape Conservation and Local Infrastructure Program, which provides cities with new infrastructure financing tools. The goal is to promote growth in urban places while preserving rural and natural resource lands.

Celebrating Progress

Investing in Regional Centers

Cities around the region continue to make significant public investments that spur new development of housing and job growth, creating great places to live and work and helping to achieve the VISION 2040 growth strategy.



Auburn Downtown Promenade

Auburn celebrated the grand opening of The Promenade in 2012. The project builds on other investments in a new City Hall and Plaza Park, opened the previous year.

South Lake Union

The South Lake Union neighborhood was a growing a hub of economic activity in 2012, with expansion of Amazon offices, the opening of the new Museum of History and Industry, and continued growth of a dynamic life sciences and global health sector.

Park Avenue Plaza and Theater in Bremerton

Bremerton celebrated the grand opening of the city's Park Avenue Plaza and Theater in 2012. The project included improvement of Fourth Street with new trees, sidewalks, and a granite compass just outside the theater's entrance.

Downtown Redmond

Redmond is making major investments to achieve its vision of downtown as an economically healthy and people-friendly place. Along with other projects, the city is constructing a section of Cleveland Street to develop main street character in the heart of Redmond's historic downtown. The downtown transportation projects have received over \$14 million in PSRC funding awards.

UW Tacoma Expands

The new Tioga Library Building on the UW Tacoma's campus opened in 2012. It includes two new classrooms, three floors of space for library and learning resources, staff offices, and room to grow. More than 4,000 students attend UW Tacoma.



VISION 2040 Award Winners

Each year PSRC honors exceptional efforts to achieve the VISION 2040 growth strategy. In 2012, six projects and programs received awards.

Beacon Hill Family Bicycle and Pedestrian Circulation Plan — Creates a network of family-friendly pedestrian and bicycle routes within the Beacon Hill neighborhood to connect parks, schools, homes and business districts.

Curb the Congestion — Partnership between Community Transit and Snohomish County to reduce traffic and encourage healthy travel options on congested roadways.

Japanese Gulch Fish Passage — Eliminates fish barriers and daylights the Japanese Gulch Creek with the hope of returning salmon to a stream as part of the environmental mitigation for Paine Field.

Pierce Transit Tomorrow — Extensive public outreach and long-range planning process conducted by Pierce Transit.

Sunset Area Revitalization Program — Renton's plan to redevelop the Sunset Terrace public housing community through investments in transportation, stormwater control, mixed-income housing, and community amenities such as parks, recreation and other services.

Suquamish Safe Route to School — Provides sidewalks and other improvements to the Suquamish Elementary School.

Providing Regional Data and Analysis

PSRC Forecasts: Population and Jobs Still Growing

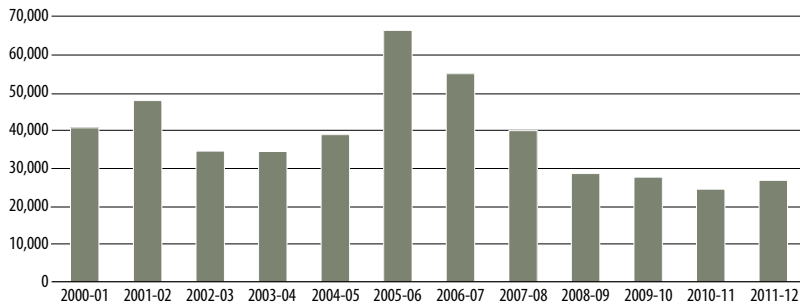
PSRC data staff completed new forecasts that feed into regional and local planning, including local comprehensive plan updates and the Transportation 2040

PSRC's data helps tell the story about what's happening in the region and provides key information needed for local and regional planning.

update. The message from the forecasts is that the region will add significant numbers of new residents and jobs through the year 2040. Despite hard times during the Great Recession, central Puget Sound is expected to make a strong recovery for the long term.

Puget Sound Trends

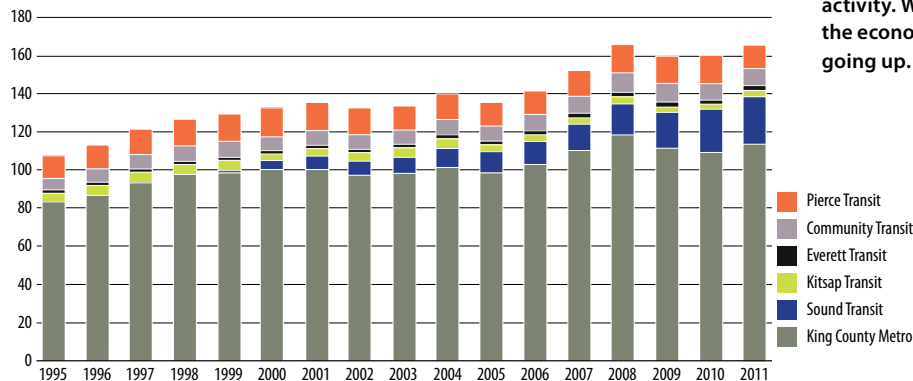
Population Increase



Population Growth Is Picking Up

The region is experiencing an upswing in population growth. Central Puget Sound added 27,000 people — a growth rate of 0.7% — between 2011 and 2012. The region's population reached an estimated 3,742,600 as of April 1, 2012.

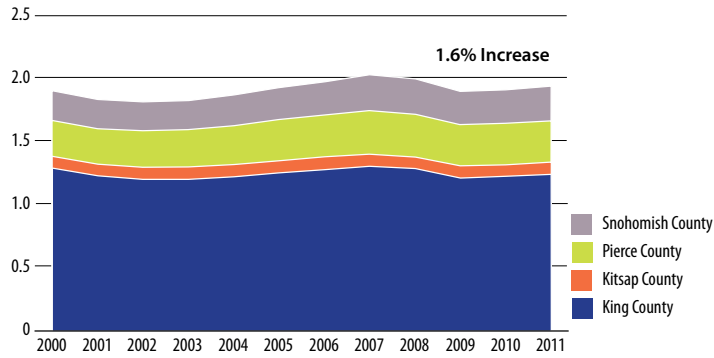
Annual Transit Ridership in Millions



Transit Ridership Increasing

Transit ridership usually syncs with economic activity. With more people back at work as the economy recovers, demand for transit is going up.

Central Puget Sound Total Employment Change by County, 2000–2011
in Millions



Economy Is Recovering

The recession hit the region and country hard, but employment is growing again.

PSRC Data Available at psrc.org

- Employment estimates
- Building permit activity
- Park and ride utilization
- Population of cities and towns
- Forecasts of population and employment

Census Training

The Puget Sound Regional Council, in conjunction with the Census Bureau, sponsored a hands-on training workshop on American FactFinder and Data Ferrett in October.

There's An App for Bike Planning



PSRC offered the CycleTracks application for smart phones for bicyclists to record their trips — collecting the data needed to more effectively prioritize bike investments.



About the Puget Sound Regional Council

Newly Electeds Workshop, March 2012



The Puget Sound Regional Council is the regional planning organization for the four-county central Puget Sound region of Washington state. PSRC members include King, Kitsap, Pierce, and Snohomish counties, 73 cities and towns, the region's port districts, tribes, transit agencies, and state transportation agencies.

PSRC's mission is to ensure a thriving central Puget Sound region now and into the future through planning for regional transportation, growth management and economic development.

PSRC's work includes:

- Long-range planning for transportation, economic development and land use
- Transportation funding — about \$180 million annually
- Regional data and research
- Regional coordination and outreach

Leadership and Organization

PSRC is governed by a General Assembly and an Executive Board. Each member of PSRC is a voting member of the General Assembly, which meets at least annually to vote on major decisions, establish the budget, and elect new officers. The Executive Board is chaired by the PSRC President, meets monthly, and serves as the governing board. Both the General Assembly and Executive Board use weighted votes based on population to make decisions.



Pat McCarthy
PIERCE COUNTY EXECUTIVE
PSRC VICE PRESIDENT
CHAIR, OPERATIONS COMMITTEE

The Operations Committee is composed of Executive Board members and chaired by the PSRC's vice president. The committee reviews and makes recommendations to the Executive Board on the budget and work program, contracts and other financial and personnel issues.

The Transportation Policy Board and Growth Management Policy Board include representatives of PSRC's member jurisdictions, tribes, regional business, labor, civic, and environmental



groups, as well as voting members representing each caucus of the state Legislature. These boards make recommendations on key transportation and growth management issues to the Executive Board.

PSRC also supports the work of the region's Economic Development District, governed by a board composed of public and private members that meets bi-monthly to coordinate regional economic development planning.

Budget and Funding Sources

The Puget Sound Regional Council's proposed biennial budget for 2012-2013 (July 1, 2011 to June 30, 2013) is \$31.4 million. The agency's work program is funded by a combination of federal and state grants, as well as dues paid by PSRC members and from other local sources.



2012 PSRC MEMBERSHIP

❖ — **COUNTIES** — ❖ King County ❖ Kitsap County ❖ Pierce County ❖ Snohomish County ❖ — **CITIES & TRIBES** — ❖
Algona ❖ Arlington ❖ Auburn ❖ Bainbridge Island ❖ Beaux Arts Village ❖ Bellevue ❖ Black Diamond ❖ Bonney Lake ❖
Bothell ❖ Bremerton ❖ Buckley ❖ Burien ❖ Clyde Hill ❖ Covington ❖ Darrington ❖ DuPont ❖ Duvall ❖ Eatonville ❖ Edge-
wood ❖ Edmonds ❖ Enumclaw ❖ Everett ❖ Federal Way ❖ Fife ❖ Fircrest ❖ Gig Harbor ❖ Granite Falls ❖ Hunts Point ❖
Issaquah ❖ Kenmore ❖ Kent ❖ Kirkland ❖ Lake Forest Park ❖ Lake Stevens ❖ Lakewood ❖ Lynnwood ❖ Maple Valley ❖
Marysville ❖ Medina ❖ Mercer Island ❖ Mill Creek ❖ Milton ❖ Monroe ❖ Mountlake Terrace ❖ Muckleshoot Indian Tribal
Council ❖ Mukilteo ❖ Newcastle ❖ Normandy Park ❖ North Bend ❖ Orting ❖ Pacific ❖ Port Orchard ❖ Poulsbo ❖ Puyallup
❖ Redmond ❖ Renton ❖ Ruston ❖ Sammamish ❖ SeaTac ❖ Seattle ❖ Shoreline ❖ Skykomish ❖ Snohomish ❖ Snoqualmie
❖ Stanwood ❖ Steilacoom ❖ Sultan ❖ Sumner ❖ Tacoma ❖ The Suquamish Tribe ❖ Tukwila ❖ University Place ❖ Woodin-
ville ❖ Woodway ❖ Yarrow Point ❖ — **STATUTORY MEMBERS** — ❖ Port of Bremerton ❖ Port of Everett ❖ Port of Seattle
❖ Port of Tacoma ❖ Washington State Department of Transportation ❖ Washington Transportation Commission ❖ — **AS-**
SOCIATE MEMBERS — ❖ Port of Edmonds ❖ Island County ❖ Puget Sound Partnership ❖ Snoqualmie Tribe ❖ Thurston
Regional Planning Council ❖ The Tulalip Tribes ❖ Washington Aerospace Partnership ❖ — **TRANSIT AGENCIES** — ❖ Com-
munity Transit ❖ Everett Transportation Service ❖ Kitsap Transit ❖ Metro (KING COUNTY) ❖ Pierce Transit ❖ Sound Transit ❖