

Puget Sound Regional Council

2010

ANNUAL

REPORT



# Message from the President & Executive Director

People and organizations throughout our region continue to look for ways to adapt to a changing economy. At PSRC, we have significantly reduced expenses while working hard to bring in new grants that match and leverage local dollars, provide needed services to our members, and fund transportation projects. The actions we're taking now will help ensure the region emerges strong as the economy recovers.

We're focusing on what we do best: planning for the future, offering data and services that help our members reach their goals, and providing a regional table for all voices to be heard and a flexible framework for working toward a common vision for the future.

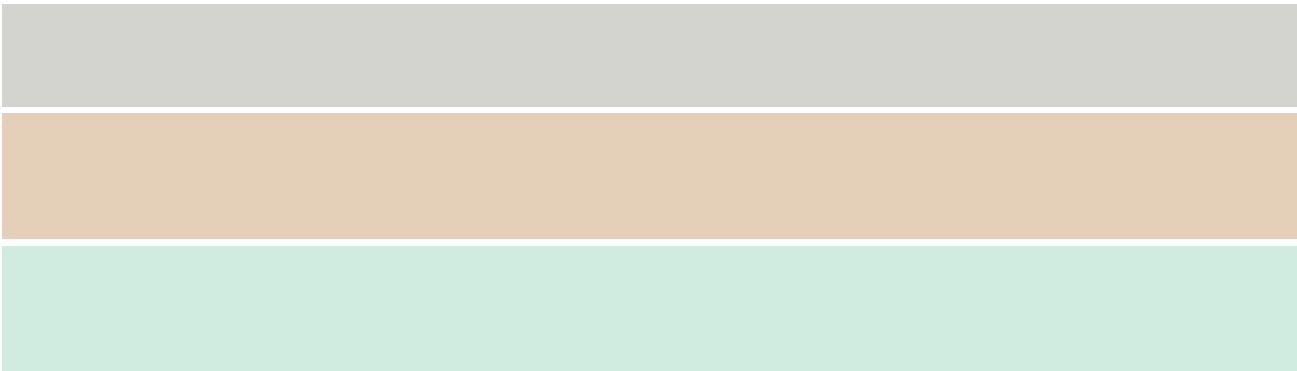
An important milestone in 2010 was the adoption of Transportation 2040 by an overwhelming majority of the region's elected leadership. Since then, we've been taking steps toward developing a prioritization process that will guide implementation of the plan over the next three decades.

More than \$84 million in PSRC funding went to key transportation projects throughout the region in 2010. Prosperity Partnership initiatives to

support higher education, develop a new energy efficiency testing program called BETI, and launch the new Global Health Nexus, Seattle, are helping

PSRC Executive Board Meeting





to promote a strong central Puget Sound economy now and into the future. The 2010 VISION 2040 Award winners honored at our General Assembly showed that in spite of budget challenges, local governments and other organizations continue to do remarkable things!

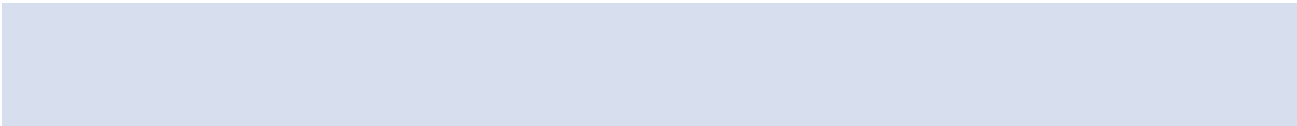
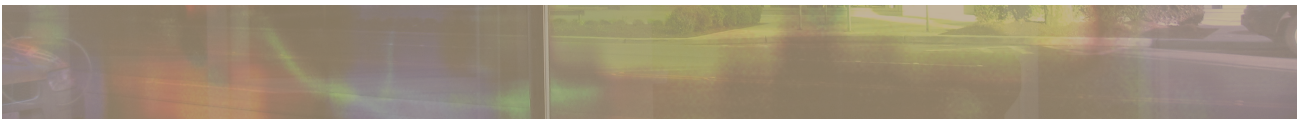
Early in 2011, the region celebrated the announcement that the U.S. Air Force selected Boeing's aerial refueling tanker bid, which represents an estimated 11,000 jobs and \$693 million in economic impact for Washington. Boeing's success is truly a result of all of us working together — business, government, nonprofit, labor and education organizations —



toward a shared vision and goal, and another great reminder of the power of partnership.

We invite you to stay in touch with PSRC's work over the next year. With the help of our many dedicated elected leaders and talented staff from member jurisdictions, we will be successful in supporting a thriving region.

**– Mayor Ray Stephanson, PSRC President & Bob Drewel, PSRC Executive Director**



# Regional Planning **Transportation**

## Region Adopts Transportation 2040, Moves into Prioritization

PSRC General Assembly 2010



In May 2010, the region overwhelmingly approved Transportation 2040, a comprehensive plan that maps out the projects and services needed to provide mobility in the region for the long term.

The plan focuses on maintaining what we have first, and being strategic about how the region expands transit, adds bike and walking routes, makes road improvements, and develops other options. Tolling is an important part of the plan in the long term, helping to fund improvements and manage traffic demand. The plan goes a long way towards helping the region meet its environmental goals by reducing emissions from vehicles, improving the health of Puget Sound, and supporting growth management goals.

Transportation 2040 includes a commitment to better prioritize the plan to reinforce and implement the VISION 2040 strategy. After adoption of the plan, PSRC's Transportation Policy Board began developing a prioritization process, laying the groundwork for the selection of projects for an estimated \$400 million in federal transportation funds in 2012.

## Transportation 2040 Named “Outstanding Plan”

In October, the national Association of Metropolitan Planning Organizations (AMPO) honored PSRC's Transportation 2040 with the 2010 Award for Outstanding Overall Achievement at its annual conference in St. Louis in October.

“We recognized the extensive public outreach that [PSRC] did in the development of this plan, bringing in so many partners, not just citizens, but also the freight industry and business community in this planning process. Also, the focus on reducing vehicle miles traveled and greenhouse gases within the region is excellent and was recognized. With all those elements in place, your plan stood out as a real example for the rest of the nation.”

— Lon Wyrick, AMPO President



# Regional Planning **Growth Management**

## Planning for Sustainable Communities



Central Link Light Rail

With funding from a Housing and Urban Development grant, PSRC will coordinate an innovative new regional partnership joining cities, housing authorities, counties, public health agencies, affordable housing advocates, educational institutions and development interests. The three-year, \$5 million grant will support neighborhood planning for more sustainable communities around as many as 100 new transit centers within the region in the next 20 years.

### VISION 2040 Implementation

PSRC continues to work closely with cities and counties in the region as they develop growth targets, countywide planning policies, comprehensive plans, and center plans to ensure they are consistent with VISION 2040 and Transportation 2040. VISION 2040 outreach materials, an online plan review manual, and one-on-one staff collaboration are all examples of the kinds of ongoing growth management planning assistance offered by PSRC.



City of Everett

### Electric Vehicle Infrastructure



PSRC partnered with the state Commerce Department to develop model ordinances, regulations and guidance for local governments related to electric vehicle infrastructure and batteries.

This work will ensure that charging stations and other infrastructure are accessible and ready to go as more electric vehicles become available in the region.

### \$1 million for Regional Transfer of Development Rights Grants

In September 2010, the Washington State Department of Commerce and the Puget Sound Regional Council announced over \$1 million in grant awards to 10 cities for transfer of development rights (TDR) planning and program development. The grants will help cities plan for development rights transferred from rural and resource lands, and help achieve the region's growth strategy.



City of Everett

# PSRC Funding

## PSRC Funding for Transportation

PSRC ran a highly competitive process to select projects to receive more than \$84 million in regionally managed federal funds in 2010. Projects were scored, selected on their merits, and publicized for public review and comment.

PSRC directed funds to priority projects that will help the region achieve its long-term transportation plan, while putting people to work building and providing transportation facilities and services. Funding actions included:

- \$24.8 million of additional 2010 funds available from the Surface Transportation Program and Congestion Mitigation and Air Quality program for 33 projects
- \$2 million in Rural Town Centers and Corridor Program Funds for six projects
- \$22.7 million of Federal Transit Administration funds for four new transit projects.
- \$15 million to the South Park Bridge to be used right away for demolition of the old bridge
- \$19.9 million to 25 transportation enhancement projects



South Park Bridge Groundbreaking

## South Park Bridge

PSRC provided \$15 million for the South Park bridge replacement project in July 2010. The \$15 million funded demolition of the existing structure and allowed the project to get underway in a timely way. The Puget Sound Regional Council began funding efforts to replace the South Park Bridge in 1999 and provided additional funds in 2002, 2006, and 2009. The bridge serves two regionally designated manufacturing and industrial centers which together support roughly 80,000 jobs. PSRC has provided the project a total of \$25 million to date.

“People have been put back to work because of the efforts of this group, this year.” – King County Executive Dow Constantine

City of Tacoma, Lincoln Avenue Overpass



## Lincoln Avenue in Tacoma

The Lincoln Avenue overpass is nearing completion. This project is raising Lincoln Avenue over key railroad tracks in the Port area, removing the at-grade conflict between rail activities and heavy vehicular traffic. PSRC selected the project to receive \$15.4 million in American Recovery and Reinvestment Act (ARRA) funds in March 2009.

City of Port Orchard, Bay St. Sea Wall



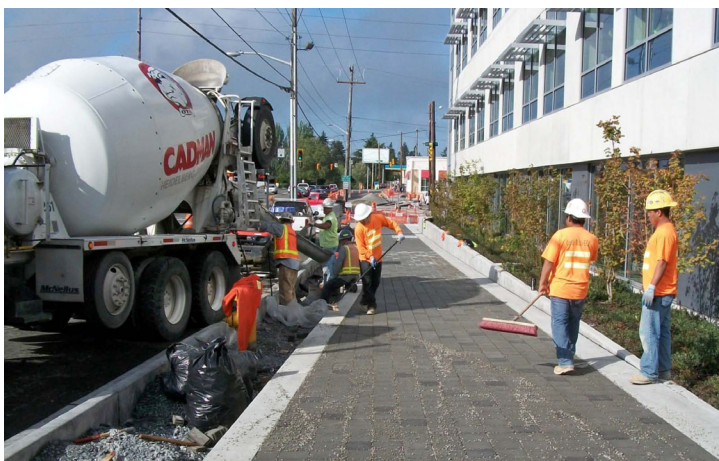
## Granite Falls Bypass Route

The Granite Falls Bypass Route opened in November. The project helps preserve the Granite Falls town center by diverting truck traffic onto a new 1.9-mile road, which will enable freight traffic to move faster and more efficiently from Highway 92 to the Mountain Loop Highway. PSRC directed a total of \$3.7 million in federal funds to this project.

## Bay Street Sea Wall in Port Orchard

Construction began on the Bay Street Sea Wall Project in May 2010. This important safety project will install a barrier between the road and the Sinclair Inlet while reinforcing the sea wall. The project received \$287,122 in PSRC funds.

City of Shoreline's Aurora Corridor



## Next Stage of Shoreline's Aurora Corridor

Ground was broken on the next stage of Shoreline's Aurora Corridor in January. This project in Shoreline will improve traffic flow, increase safety and promote economic development — all priorities in Transportation 2040. The project received \$7 million in federal funds via PSRC.

# Economic Development

## Prosperity Partnership



### **Sustaining Economic Development**

Through the efforts of the Prosperity Partnership and the Economic Development District, the region is advancing a strategy to build our economy and ensure long-term prosperity for all.

### **Tanker Success!**

In February 2011, the region and state celebrated the U.S. Air Force's selection of the Boeing aerial refueling tanker, which means an estimated 11,000 jobs and \$693 million in economic impact for Washington. As a leading member of the Washington Aerospace Partnership, Prosperity Partnership worked over the past several years to ensure that public and private sector leaders across the country understood the important implications of this contract decision. In particular, the coalition partnered with a diverse set of stakeholders, including the Greater Seattle Chamber of Commerce, the Washington State Labor Council, Governor Gregoire and the state's Congressional delegation.

### **Global Health Nexus, Seattle**

Over the past year, Global Health Nexus, Seattle — an initiative of the Washington Global Health Alliance in partnership with Prosperity Partnership and the Washington Biotechnology and Biomedical Association — has been working to make Seattle and Washington state known around the world as the center for the advancement of global health discovery, development, and delivery.

Going forward, the Nexus and its many partners in the research, business, government, nonprofit, philanthropy, and faith and service communities will work to build public-private collaboration on global health issues. In July 2012, a month-long celebration of Seattle's leadership in global health is planned in conjunction with the 50th Anniversary of the Seattle World's Fair.

### **Supporting the Military Cluster**

Recognizing that the military cluster is a significant source of economic activity in the region, the Prosperity Partnership is working to enhance economic opportunities for local military personnel, their spouses and families, and veterans in the region.

Recent successes include an expedited commercial driver's license certification process for military truck drivers and the inclusion of Washington into the Interstate Compact on Educational Opportunity for Military Children, helping military families achieve better educational continuity when transferring between school districts and states.



## BETI: Growing the Energy Efficiency Cluster

Developed as part of the Brookings Institution's Metropolitan Business Plan initiative, BETI (Building Efficiency Testing and Integration) is a proposed entity that will help innovators in the energy-efficiency field to test their products, designs and services prior to launching them into the marketplace. In 2010, the Prosperity Partnership finalized a business plan for BETI, and is working with federal, state and local stakeholders toward its implementation.

## Improving Access to Higher Education



University of Washington Tacoma

Quality education for all residents is essential to sustain prosperity in the region and state. With an accessible, affordable and accountable higher education system, residents are prepared to compete for good jobs and companies are able to find qualified employees. Washington needs well-educated residents to meet the demands of the new economy.

In summer 2010, Governor Gregoire convened a Higher Education Funding Task Force, chaired by Microsoft Vice President and Prosperity Partnership Co-Chair Brad Smith, to identify a plan to ensure the long-term sustainability and accountability of the state's four-year higher education institutions. Once the Task Force delivered its proposal, the Prosperity Partnership mobilized to support these recommendations, and to ensure that the state continues to invest in higher education. In May, the state Legislature passed key legislation that enacts a majority of the task force recommendations, increasing access to college degrees needed to compete in the 21st century economy.

# Innovation

Orting Valley Farms



## VISION 2040 Award Winners: Recognizing Regional Innovations

Each year the Puget Sound Regional Council honors the superb work being done by public and private organizations to achieve our region's growth, economic, and transportation strategy, VISION 2040. In May 2010, PSRC honored five exceptional efforts: the Bel-Red Corridor Plan, Burien Town Square, Orting Valley Farms, Community Transit's SWIFT bus rapid transit, and Poulsbo's comprehensive plan.

**Orting Valley Farms:** This VISION 2040 award winning effort involved a regional transfer of development rights and organic conservation easements, ensuring preservation of 100 acres of agricultural land now divided into four new organic family farms. Partners were Pierce County, PCC Farmland Trust and four farm families.

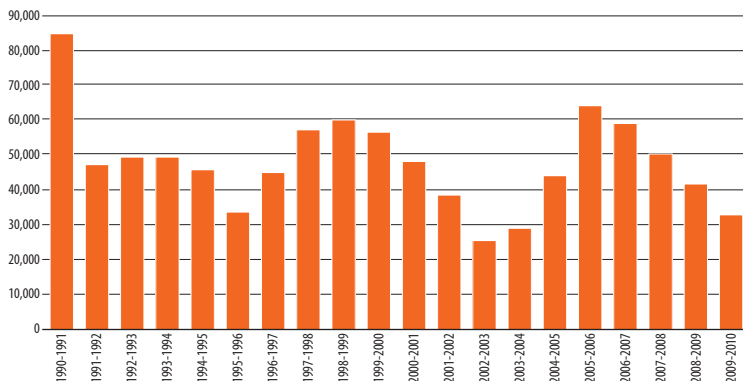
# Data

## Providing Regional Data and Analysis

The Puget Sound Regional Council plays a key role in tracking regional data trends and coordinates technical issues important to cities and counties in the region.

## Sharing the Data

Annual Population Change in the Central Puget Sound  
Source: U.S. Census Bureau, Washington State Office of Financial Management



This is one example of the many kinds of data published in PSRC's publication, Puget Sound Trends. Through Trends, GIS mapping, the PSRC website, and by responding to hundreds of data requests, PSRC staff helps to distribute the data needed to plan for the future.

PSRC data includes population, housing and employment estimates, residential building permits, traffic counts, bicycle and pedestrian data, and American Community Survey data from the Census.

Regional travel demand modeling and forecasting provides information to support transportation, growth management and economic planning. In 2010, data staff continued work on an activity-based model for travel, new land use forecasts from Urbansim, and made updates to the regional macro-economic model.

Algona  
 Arlington  
 Auburn  
 Bainbridge Island  
 Beaux Arts Village  
 Bellevue  
 Black Diamond  
 Bonney Lake  
 Bothell  
 Bremerton  
 Buckley  
 Burien  
 Clyde Hill  
 Community Transit  
 Covington  
 Evans School of Public Affairs, UW  
 Darrington  
 Des Moines  
 DuPont  
 Duvall  
 Eatonville  
 Edgewood  
 Edmonds  
 Enumclaw  
 Everett  
 Everett Transportation Service  
 Federal Way  
 Fife  
 Fircrest  
 Gig Harbor  
 Granite Falls  
 Hunts Point  
 Island County  
 Issaquah  
 Kenmore  
 Kent  
 King County  
 King County Ferry District  
 Kirkland  
 Kitsap County  
 Kitsap Transit  
 Lake Forest Park  
 Lake Stevens  
 Lakewood  
 Lynnwood  
 Maple Valley  
 Marysville  
 Medina  
 Mercer Island  
 METRO (Metropolitan King County)  
 Mill Creek  
 Milton  
 Monroe  
 Mountlake Terrace  
 Muckleshoot Indian Tribal Council  
 Mukilteo  
 Newcastle  
 Normandy Park  
 North Bend  
 Orting  
 Pacific  
 Pierce County  
 Pierce Transit  
 Port of Bremerton  
 Port of Edmonds  
 Port of Everett  
 Port of Seattle  
 Port of Tacoma  
 Port Orchard  
 Poulsbo  
 Puget Sound Partnership  
 Puyallup  
 Redmond  
 Renton  
 Ruston  
 Sammamish  
 SeaTac  
 Seattle  
 Shoreline  
 Skykomish  
 Snohomish  
 Snohomish County  
 Snoqualmie  
 Snoqualmie Tribe  
 Sound Transit  
 Stanwood  
 Steilacoom  
 Sultan  
 Sumner  
 Tacoma  
 The Suquamish Tribe  
 The Tulalip Tribes  
 Thurston Regional Planning Council  
 Tukwila  
 University Place  
 WA State Dept. of Transportation  
 WA Transportation Commission  
 Woodinville  
 Woodway  
 Yarrow Point

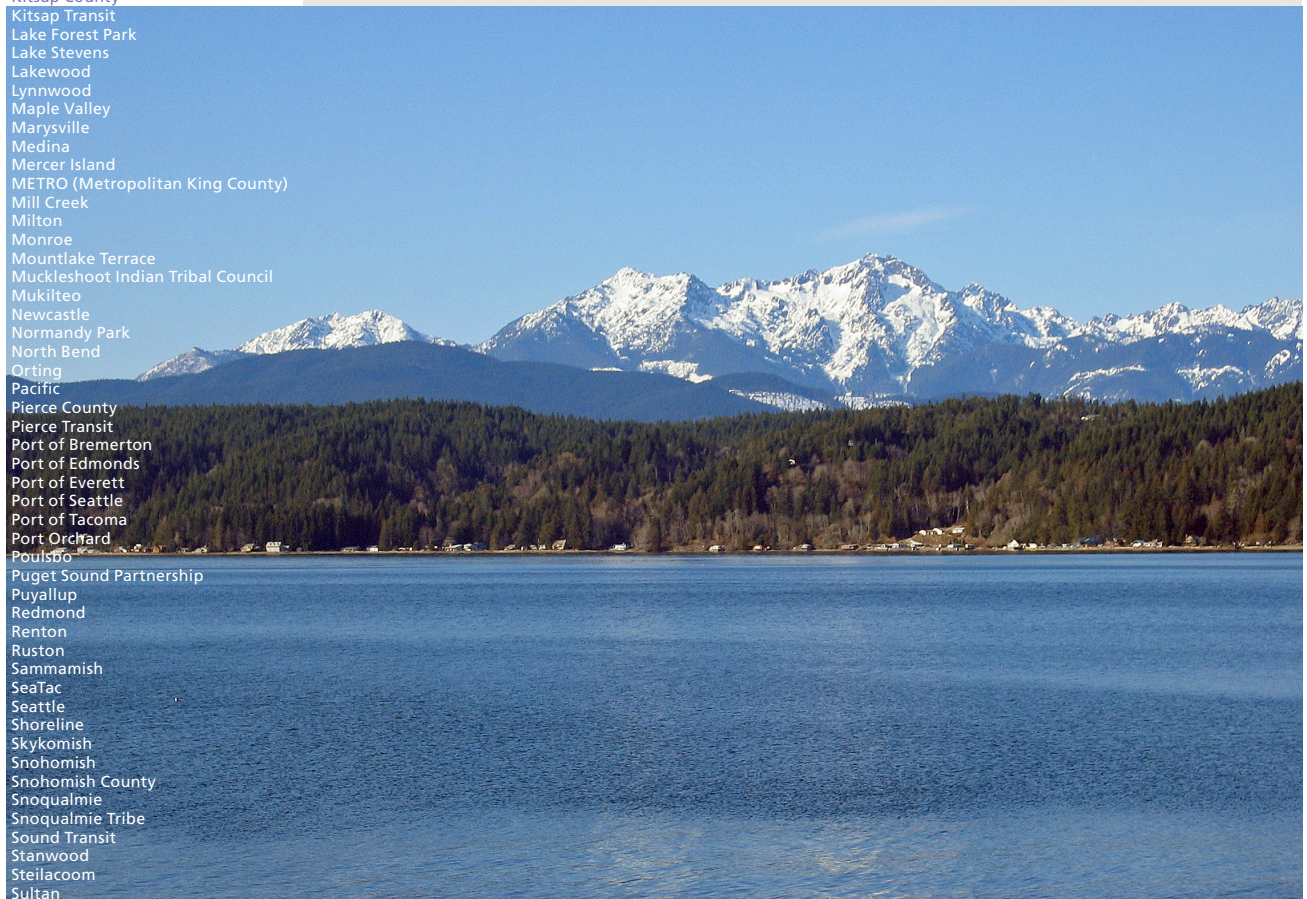
# About PSRC

PSRC's mission is to ensure a thriving central Puget Sound now and into the future through planning for regional transportation, growth management and economic development. PSRC's work includes:

- Long-range planning for transportation, economic development and land use
- Transportation funding
- Regional data and research
- Regional coordination and outreach

## Members

PSRC members include King, Kitsap, Pierce and Snohomish counties, 72 cities and towns, the region's port districts, tribes, transit agencies, and state transportation agencies. In 2010, PSRC welcomed Darrington, Normandy Park and the Puget Sound Partnership as new members.



Hood Canal and Olympic Mountains

learn more at [psrc.org](http://psrc.org)

# Puget Sound Regional Council

1011 Western Avenue, Suite 500  
Seattle, Washington 98104-1035

website: [psrc.org](http://psrc.org)  
phone: 206-464-7090  
questions: [info@psrc.org](mailto:info@psrc.org)



**MAY 2011**