



PUGET SOUND REGIONAL COUNCIL  
2008 ANNUAL REPORT

# MESSAGE FROM THE PRESIDENT AND EXECUTIVE DIRECTOR



Sue Singer  
DEPUTY MAYOR, CITY OF  
AUBURN — PRESIDENT



Bob Drewel  
EXECUTIVE DIRECTOR



## Acting Now to Make a Better Future for the Puget Sound Region

We're fortunate to live in a beautiful part of the world that is home to many talented people, innovative businesses, effective nonprofits and vibrant community organizations who are working hard to make this region even better. During these difficult economic times, the Puget Sound Regional Council is continuing to focus on the most promising strategies to help the region thrive in the long term.

As the federal government seeks to jumpstart an economic recovery, we are taking the opportunity to both retain and create new jobs in the region and build a foundation for the future by funding transportation projects that will help build and maintain roads, mass transit, bridges, sidewalks and other projects. These investments will benefit the region's residents for years to come.

The Puget Sound Regional Council's track record of working collaboratively with our members, and state and federal leaders to meet regional goals aided the fast-track efforts to identify projects that were eligible for federal economic recovery funding early in 2009. We relied on excellent work by staff from local jurisdictions, along with PSRC staff, who convened through the Regional Project Evaluation Committee and countywide organizations to identify ready-to-go projects that help achieve long-term regional goals. On March 12, 2009, the Executive Board approved \$214 million in federal transportation funding, leveraging the completion of projects representing a combined transportation investment in the region of \$4 billion.

That spirit of collaboration was evident throughout other efforts this past year. After the approval of the VISION 2040 growth strategy by the PSRC General Assembly last April, staff worked closely with local jurisdictions on incorporating the new regional policies in local planning efforts, giving workshops and presentations around the region and developing a new manual to help local jurisdictions update their comprehensive plans.

Even with the housing downturn, our region is challenged with providing affordable housing close to people's jobs. Our growth management and economic development teams are working together to develop housing education and technical assistance to help local jurisdictions provide a wide range of housing options for all our region's residents.

Transportation is a key part of supporting the economy and quality of life in the region. In 2008, PSRC developed alternatives for the new regional plan, Transportation 2040, which range from making modest improvements with limited funds to shifting regional priorities in a way that would result in a new type of transportation system. We'll be looking for more comments and input on these options in 2009, with a draft environmental impact statement to be released by this summer.

## ***PSRC Honored for Outstanding Regional Achievement in Planning***

*In October, PSRC was honored with an award for Outstanding Regional Achievement in Metropolitan Transportation Planning by the Association of Metropolitan Planning Organizations. The award recognized PSRC's elected leadership and staff for efforts to work together regionally and the agency's success in integrating environmental, economic, transportation and land use planning.*



Bob Drewel, Ray Stephanson, Julia Patterson, Sue Singer



The Prosperity Partnership worked in multiple ways to build a strong economic foundation for the region. The Aerospace Futures Alliance successfully supported legislation expanding tax incentives for businesses throughout the entire aerospace value chain. The Washington Clean Technology Alliance premiered Evergreen: The Washington Clean Tech Story, a documentary on Washington's clean tech industry. Strategies were developed for the Military and Tourism/Visitors industry clusters, two important and growing sectors of the Puget Sound economy.

Our data team continued to innovate with new data tools for use in the Transportation 2040 plan update. These tools are aimed at evaluating new policies in the areas of the environment, economy, development patterns, public services, and transportation, to more accurately forecast how people would react to different kinds of transportation investment

strategies. New modeling approaches address pricing and tolling, greenhouse gas emissions, and provide better analysis of freight and nonmotorized transportation, among other improvements.

In October 2008, we were delighted to receive an award for Outstanding Regional Achievement in Metropolitan Transportation Planning from the Association of Metropolitan Planning Organizations. It's a real honor for us to be recognized for all of the excellent work by elected leadership and regional and local staff. Your contributions are why we are successful in working together and preparing the region for the future.

Thank you!

***Sue Singer and Bob Drewel***

# PSRC FUNDING

*The Puget Sound Regional Council selects projects to receive federal transportation funding available to the region. Funding decisions are based on the region's transportation plan, the regional growth strategy and economic development goals.*

## Economic Recovery Funds Support Job Creation the Region

PSRC's experience in leading the regional process to select projects for federal funding was invaluable during efforts to distribute economic recovery funding early in 2009. In November 2008, PSRC began working with cities, counties, ports, transit agencies, and the state to develop a list of ready-to-go projects that would be candidates for economic recovery funds.

On March 12, 2009, the Executive Board approved \$214 million in economic recovery funding available via PSRC. That funding will leverage the completion of projects representing a combined transportation investment in the region of \$4 billion.



THE TUKWILA INTERNATIONAL BLVD STATION

*"Here in central Puget Sound we are ready to proceed with meaningful projects that will put people to work quickly and get these dollars circulating in our overall economy. These projects will not only produce jobs in the near term, but will also provide a foundation for future growth."*

— AUBURN DEPUTY MAYOR SUE SINGER, PRESIDENT OF PSRC

# PSRC FUNDING



*“With these economic recovery funds we are leveraging with other state, federal and local funding to put people to work. We welcome federal policies that place priority on transparency and accountability and will do our best to track progress and report on progress at every step of the way.”*

— **EVERETT MAYOR RAY STEPHANSON, VICE PRESIDENT OF PSRC**



BLUE DUWAMISH, ARTWORK ON THE LINK LIGHT RAIL  
ELEVATED GUIDEWAY OVER THE DUWAMISH RIVER

## Assuring Transportation Investments Support Regional Priorities

PSRC continued to prioritize PSRC federal funds to help achieve the region’s transportation goals and ensure all projects in the Transportation Improvement Program (TIP) are consistent with the regional plan and meet clean air requirements. In 2008, the Executive Board approved a total of \$31 million from PSRC’s federal funding programs to projects around the region.

## Providing Support for Special Needs Transportation

PSRC coordinates the funding of special needs transportation projects through the federal New Freedom and Job Access Reverse Commute programs. Over the last year, PSRC recommended more than \$2.5 million for 23 projects. This funding helps provide transportation service for people unable to transport themselves or pay for transportation services because of mental or physical disability, income status, or age.

## PSRC Funding Opportunities in 2009

A total of \$372 million in federal transportation funds will be available via PSRC in 2009. In January, the Executive Board approved the policy framework that describes the project selection process, including criteria used to select projects. Final decisions on funding will be made by the Executive Board in October 2009, with the funds becoming available beginning in early 2010 after the regional Transportation Improvement Program receives federal approval.

# KEEPING THE REGION MOVING

*The Puget Sound Regional Council maintains the regional transportation plan, conducts research, and coordinates with transportation providers to improve transportation throughout the region.*

## Transportation 2040 — Updating the Long-Range Plan

The region is taking a fresh look at the best ways to keep people and freight moving in the region over the next three decades. In 2008, the agency developed five alternative approaches for meeting the region's transportation needs. The approaches range from making modest improvements with limited funds to shifting regional priorities in a way that would result in a new type of transportation system. In every case, tolling plays a part in paying for improvements and managing congestion.

Later this year PSRC will release the Transportation 2040 Draft Environmental Impact Statement for public review and comment. The environmental statement will report the results of the technical and policy analyses and the potential impacts on both the natural and built environments for each alternative.



TACOMA NARROWS BRIDGE

# KEEPING THE REGION MOVING



## **Regional Passenger-Only Ferry Study**

In 2008, PSRC completed a study of passenger-only ferries, a first step in moving the region toward the development of a successful and sustainable passenger-only ferry system. The study identified market demand for passenger ferries, evaluated potential routes and service and developed a regional framework for investments in passenger-only ferries.

## **BNSF Eastside Rail Corridor Feasibility Study**

The Puget Sound Regional Council partnered with Sound Transit on the BNSF Eastside Rail Corridor Feasibility Study at the request of the 2008 Legislature. The study evaluated the potential of commuter rail service between Snohomish County and eastern King County. It included ridership forecasting, a review of cost estimates and an advisory committee of local jurisdictions along the corridor. Final results of this study were presented to the Legislature in February 2009.

## **Reauthorization of SAFETEA-LU**

PSRC continued to track and report to members on the status of reauthorization of the federal transportation law, SAFETEA-LU. PSRC Transportation Planning Director Charlie Howard testified in September 2008 to the Highways and Transit Subcommittee of the U.S. House Committee on Transportation and Infrastructure on planning issues related to the reauthorization of federal transportation programs.





Paula Hammond



Dick Ford



Bob Drewel

### 520 Tolling Committee

At the request of the Governor and Legislature, PSRC Executive Director Bob Drewel served as chairman of the 520 Tolling Implementation Committee, which included Paula Hammond, Washington State Secretary of Transportation, and Dick Ford, Washington State Transportation Commissioner. During 2008, the committee engaged community members

and local leaders, asking for input on how tolls would work for 520 users, nearby communities, and taxpayers. The committee submitted its findings to the Legislature and Governor on January 28, 2009.

### Mass Transit Measure Approved by Voters

The region’s voters approved Proposition 1 in November 2008, authorizing Sound Transit to implement its plan to add regional express bus and commuter rail service and build 36 additional miles of light rail. PSRC reviewed the plan for conformity with regional policies in Destination 2030 and VISION 2040, a requirement for moving the plan forward.

*Deputy Mayor Sue Singer, PSRC President, and Bob Drewel, PSRC Executive Director, presented a plaque in appreciation of Ron Sims, King County Executive, prior to his departure*



Ron Sims

*to become Deputy Secretary of the United States Department of Housing and Urban Development. Sims praised PSRC for its success linking land use and transportation policies, saying “there is none better [MPO] in the country, none more collaborative, and none more willing to take on difficult issues. I want to thank you all for your commitment to environmental sustainability. Your leadership has been extraordinary, each and every one of you.*

*Thank you for your commitment on behalf of future generations.”*

# VISION 2040

## PEOPLE, PROSPERITY AND PLANET

*In April 2008, PSRC's General Assembly voted overwhelmingly to adopt VISION 2040 as the region's growth, transportation and economic strategy, marking a major milestone in our efforts to get the region ready for the future.*

To assist local jurisdictions and countywide planning bodies with incorporating VISION 2040 into their planning efforts, PSRC developed a new manual to assist with plan development and review. It will address how countywide planning policies, local comprehensive plans, transit agency plans, and center plans should work with the VISION 2040 strategy.

PSRC also launched a project to investigate and provide information on infrastructure financing tools and programs. The goal is to identify funding opportunities to provide the necessary facilities and services to serve the region's centers and compact urban communities.

PSRC also began developing the Housing Education and Technical Assistance Program to support local government efforts to promote production and preservation of affordable housing near job centers.

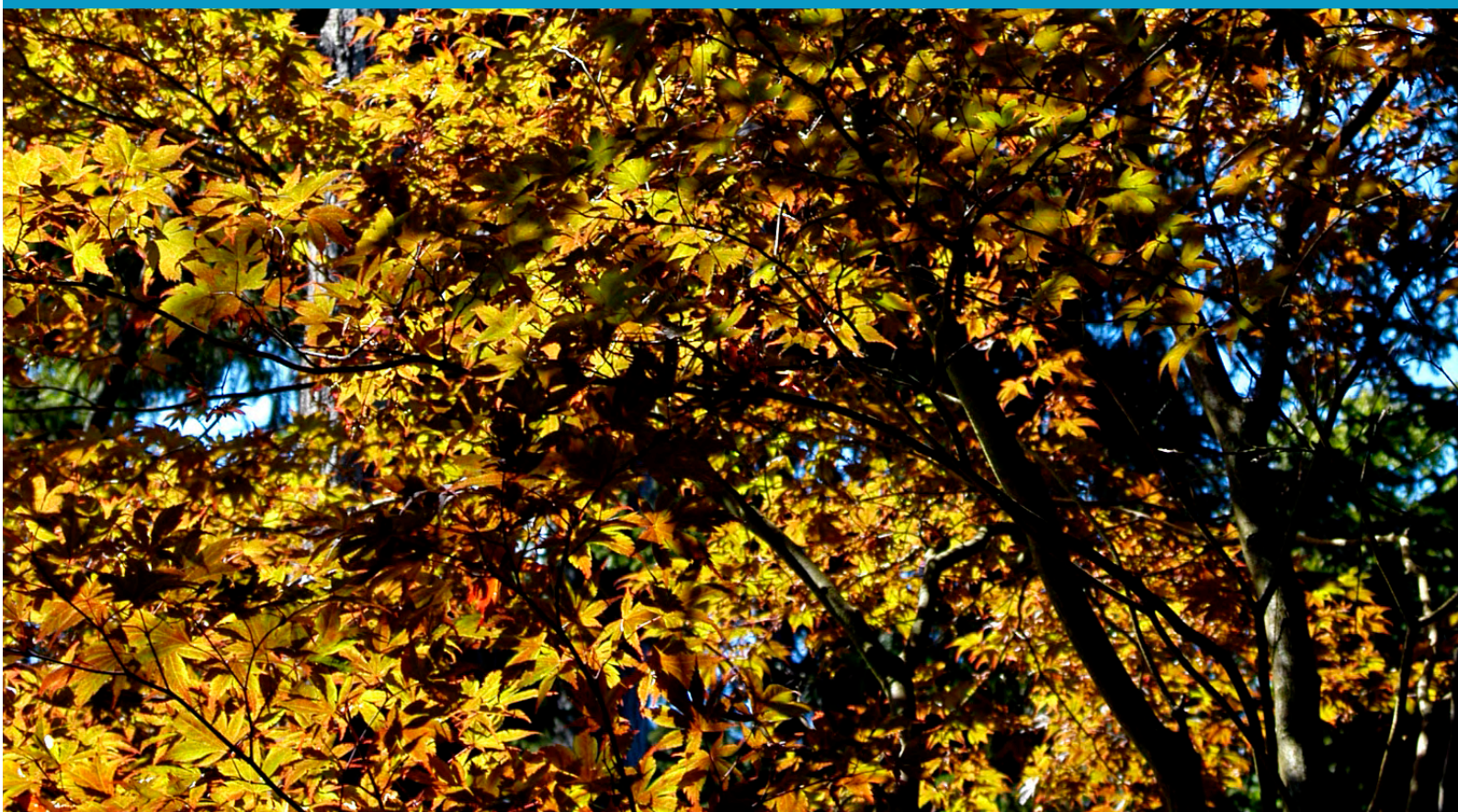


SNOHOMISH COUNTY



*"I am pleased that the concept of people, prosperity, and planet is a central theme of VISION 2040. The strategy conveys that the people of our region, our economic prosperity, and our relationship to the planet are tied together in mutually supportive and interdependent ways."*

— COUNCILMEMBER MIKE LONERGAN, CHAIR,  
GROWTH MANAGEMENT POLICY BOARD



# SUSTAINING THE REGIONAL ECONOMY

*Through the Prosperity Partnership, PSRC works to implement the Regional Economic Strategy, focusing on initiatives that will help the region be more competitive and ensure long-term prosperity for all.*

## Washington Clean Technology Alliance Raises Awareness of a Growing Cluster

Washington Clean Technology Alliance (WCTA) and its partners brought a delegation of approximately 30 clean tech businesses and organizations to GLOBE 2008 — an international trade fair and conference on business in the environment — in Vancouver, BC. WCTA also collaborated with local filmmakers Hal Calbom Communications and More Dust Than Digital Films to produce a documentary film and online campaign as part of a year-long effort to help raise awareness about the state of the clean tech industry in Washington. Visit [evergreenfilm.org](http://evergreenfilm.org) to track their progress.



## Prosperity Partnership Works to Strengthen Minority-Owned Business Ecosystem

Under the leadership of Seattle City Councilmember Bruce Harrell, the Prosperity Partnership continued to work on improving the business climate in Puget Sound for entrepreneurship by minority-owned businesses. Specifically, the initiative — now known as Performance First — is focused on the creation of a new Minority-Owned Business Supplier Best Practices Toolkit and Implementation Guide.

*"It is precisely at such times as these, when we seem to be immersed in crisis and the inclination is to panic, that we must focus more than ever on our vision for the long term. On the collective, greater good, our shared values, and on the foundational relationships that have served us so well."*

— SCOTT CARSON, EXECUTIVE VICE PRESIDENT, BOEING COMPANY





*In recognition of her 36 years of service in the Washington State Legislature, the Prosperity Partnership honored Representative Helen Sommers at the November luncheon. Former University of Washington President William Gerberding did the honors.*

## Strategies Completed for Military and Tourism & Visitors Clusters

The Military Cluster Development Strategy focuses on four initiatives:

- Understand and support the military mission in Washington state and at individual bases through a permanent working group
- Enhance employment opportunities for military spouses and veterans through legislation and partnerships
- Improve education opportunities for military personnel, spouses, and children
- Use business attraction, retention, and expansion strategies to expand the region's defense contracting industry

The Tourism & Visitors Cluster Development Strategy is also composed of four initiatives:

- Secure approval to expand the Washington State Convention and Trade Center (WSCTC)
- Create a major global health summit and celebration to be held sometime in 2012
- Develop the infrastructure and support to improve the international visitor's experience in the Puget Sound region
- Develop and promote a "Puget Sound destination experience"

## Aerospace Futures Alliance

The Aerospace Futures Alliance successfully supported legislation that expands tax incentives for businesses throughout the entire aerospace value chain. AFA also began work on developing solutions to workers compensation and unemployment insurance, a high priority of the industry's largest employer, Boeing.



For more information, visit [www.prosperitypartnership.org](http://www.prosperitypartnership.org).

### **SOUTHWEST WASHINGTON TOUR**

In June, more than 80 regional leaders from the Puget Sound and Greater Spokane regions participated in a tour of Southwest Washington as a way to learn about opportunities for statewide collaboration on issues key to Washington's economy, such as power, transportation, and education.

# DELIVERING DATA, TECHNICAL ASSISTANCE AND RESEARCH

The Puget Sound Regional Council collects and analyzes data to support regional planning and meet the data needs of member jurisdictions. Data work in 2008 included producing annual estimates of residential building permits, population and households, and employment in the four-county region; conducting a survey of all off-street parking in the central business districts and ferry terminals; and tracking traffic counts on the metropolitan transportation system.

## New Tools for Analysis and Forecasting

PSRC has been developing new tools to improve the analysis and forecasting capabilities for use in the Transportation 2040 plan update process. These tools are aimed at evaluating new policies in the areas of the environment, economy, development patterns, public services, and transportation. New impacts to be measured include climate change, freight, land use, reliability, health, security, and equity.

These new integrated urban models provide new analytical capabilities for planning analysis: changes in growth patterns due to transportation investments; equity analysis by mode, income, geography, or vehicle type; environmental measures for air quality, water quality, resource lands, and energy usage; user benefits compared to costs and economic prosperity indicators.

The agency also implemented other short-term model improvements that address the strategies that will be tested in Transportation 2040:

- Pricing/Tolling — improved sensitivity in the models to cost
- Freight Analysis — refined speeds and costs for trucks
- Modal Choice Analysis — stratified transit modes into local bus, premium bus, light rail, commuter rail, and ferry
- Nonmotorized Analysis — added pedestrian and bicycle factors
- Speed and Reliability Impacts — added reliability and improved speed validation
- Greenhouse Gas Emissions — used EPA Moves model to generate emission rates by type for different speed ranges

*Reliable, accurate data and sound forecasting methods  
are essential as the region plans for the future*

### **Puget Sound Trends**

Issues of *Puget Sound Trends* provided highlights of population, the economy and transportation trends in the region. Trend topics included:

- 2006 Residential Building Permit Trends
- Comparing Population, Commute and Freight Patterns in the Puget Sound and Five Peer Regions
- Development Patterns Shift Under Growth Management
- Travel Characteristics for Puget Sound Residents
- Employment Change in Puget Sound, 2006-2007
- Vehicle Miles Traveled
- Population of Cities and Towns
- Emission Trends in the Central Puget Sound Region
- Prosperity Partnership's Indicators Highlight Areas of Change
- Household Travel Survey Comparison Report

### **Geographic Information Systems**

GIS staff maintained and updated the geodatabase of plans, programs and projects in the region. Activities included technical assistance and distribution of GIS products to agency staff, member jurisdictions, and other customers. PSRC also coordinated the Puget Sound LIDAR Consortium, a cooperative of public agencies formed to share high-resolution digital topography data.

# ABOUT PSRC



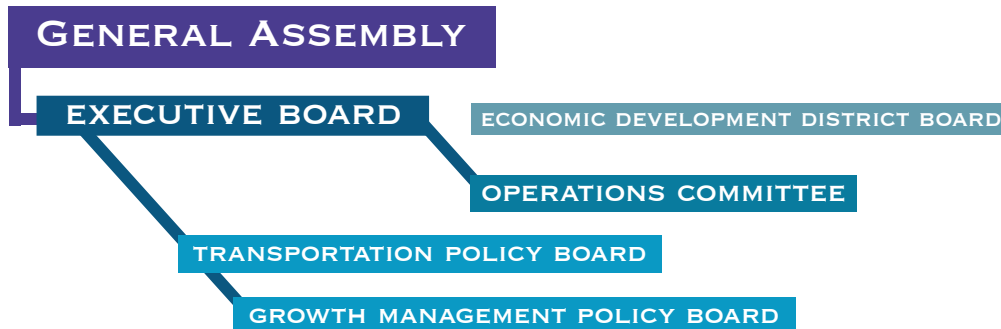
The Puget Sound Regional Council is the regional planning organization for the four-county central Puget Sound region of Washington state. PSRC functions as a regional transportation planning organization — a state designation under Washington’s Growth Management Act — and for federal purposes, a metropolitan planning organization. PSRC’s work focuses on:

- Long-range planning for transportation, economic development and land use
- Transportation funding
- Regional data, analysis and research
- Regional coordination and outreach

PSRC supports the work of the region’s Economic Development District (EDD), the federally designated economic development district for the central Puget Sound region.

## Leadership and Organization

PSRC’s General Assembly is composed of representatives of all member jurisdictions. The Executive Board (the agency’s governing board) meets monthly to make decisions on behalf of the General Assembly, with the input of several advisory boards made up of local elected officials and representatives of business, labor, environmental and community interests, as well as input from the public at large.





## Bob Drewel Honored with Lifetime Achievement Award for Economic Development



*“Throughout his career, Bob has tirelessly and effectively advocated for family-wage industries and family-wage jobs in our state. And he’s done it on both sides of the mountains. This award pays tribute to Bob’s leadership in promoting regional solutions to challenges facing the Northwest.”*

— GOVERNOR CHRIS GREGOIRE

### ADVISORY COMMITTEES

PSRC also depends on the work of advisory committees to provide recommendations on regional issues. Advisory committees include:

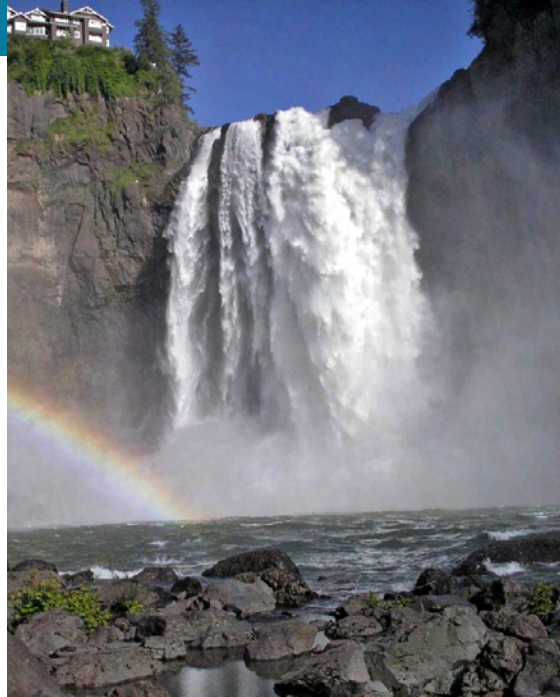
- Regional Staff Committee
- Regional Project Evaluation Committee
- Transportation Enhancements Committee
- Regional Technical Forum
- Transportation Operators Committee
- Seattle-Tacoma-Everett FTA Caucus
- Bicycle Pedestrian Advisory Committee
- Special Needs Transportation Committee
- Regional Traffic Operations Committee
- Transportation 2040 Working Group
- Pricing Task Force

Countywide planning organizations provide recommendations to PSRC on funding for transportation projects and other issues. The countywide organizations are: Kitsap Regional Coordinating Council, Pierce County Regional Council, Snohomish County Tomorrow, and King County Growth Management Planning Council. In King County, there are three subregional groups: the Eastside Transportation Partnership, the South County Area Transportation Board, and the SeaShore Transportation Forum.

PSRC invites Puget Sound residents to get involved in the work of the agency. A comprehensive public participation plan describes the many ways individuals and groups can become involved and voice their opinions. The plan is available online at [psrc.org](http://psrc.org) or by request from the Information Center, 206-464-7532.

### Budget and Funding Sources

The Puget Sound Regional Council’s current biennial budget (July 1, 2007 to June 30, 2009) totals \$23.9 million. The agency receives 74 percent of its revenue from federal grants, 6 percent from state grants, and about 20 percent from dues paid by PSRC members. The proposed budget for fiscal years 2010 – 2011 is expected to reflect lower revenues and expenditures.



## PSRC Annual Report — April 2009

Funding for this document provided in part by member jurisdictions, grants from U.S. Department of Transportation, Federal Transit Administration, Federal Highway Administration and Washington State Department of Transportation. PSRC fully complies with Title VI of the Civil Rights Act of 1964 and related statutes and regulations in all programs and activities. For more information, or to obtain a Title VI Complaint Form, see [www.psrc.org/about/titlevi/index.htm](http://www.psrc.org/about/titlevi/index.htm) or call 206-464-6175. Sign language and communication material in alternative formats can be arranged given sufficient notice by calling 206-464-7090. TDD\TTY: 206-464-5409.

Additional copies of this **PSRC Annual Report** may be obtained by contacting:

Puget Sound Regional Council / Information Center  
1011 Western Avenue, Suite 500  
Seattle, WA 98104-1035

206-464-7532 / FAX 206-587-4825 / [info@psrc.org](mailto:info@psrc.org)

VASHON ISLAND





# Puget Sound Regional Council

## MEMBERSHIP

### COUNTIES

KING COUNTY  
KITSAP COUNTY  
PIERCE COUNTY  
SNOHOMISH COUNTY

### CITIES AND TRIBES

ALGONA  
ARLINGTON  
AUBURN  
BAINBRIDGE ISLAND  
BEAUX ARTS VILLAGE  
BELLEVUE  
BLACK DIAMOND  
BONNEY LAKE  
BOTHELL  
BREMERTON  
BUCKLEY  
BURIEN  
CLYDE HILL  
COVINGTON  
DUPONT  
DUVALL  
EATONVILLE  
EDGEWOOD  
EDMONDS  
ENUMCLAW  
EVERETT  
FEDERAL WAY  
FIFE  
FIRCREST  
GIG HARBOR  
GRANITE FALLS  
HUNTS POINT  
ISSAQUAH  
KENMORE  
KENT  
KIRKLAND

LAKE FOREST PARK  
LAKE STEVENS  
LAKEWOOD  
LYNNWOOD  
MAPLE VALLEY  
MARYSVILLE  
MEDINA  
MERCER ISLAND  
MILL CREEK  
MILTON  
MONROE  
MOUNTLAKE TERRACE  
MUCKLESHOOT INDIAN TRIBAL  
COUNCIL  
MUKILTEO  
NEWCASTLE  
NORTH BEND  
ORTING  
PACIFIC  
PORT ORCHARD  
POULSBO  
PUYALLUP  
REDMOND  
RENTON



RUSTON  
SAMMAMISH  
SEATAC  
SEATTLE  
SHORELINE  
SKYKOMISH  
SNOHOMISH  
SNOQUALMIE  
STANWOOD  
STEILACOOM  
SULTAN  
SUMNER

THE SUQUAMISH TRIBE  
TACOMA  
TUKWILA  
UNIVERSITY PLACE  
WOODINVILLE  
WOODWAY  
YARROW POINT

### STATUTORY MEMBERS

PORT OF BREMERTON  
PORT OF EVERETT  
PORT OF SEATTLE  
PORT OF TACOMA  
WASHINGTON STATE DEPARTMENT OF TRANSPORTATION  
WASHINGTON TRANSPORTATION COMMISSION

### ASSOCIATE MEMBERS

PORT OF EDMONDS  
DANIEL J. EVANS SCHOOL OF PUBLIC AFFAIRS  
ISLAND COUNTY  
PUYALLUP TRIBE OF INDIANS  
SNOQUALMIE TRIBE  
THURSTON REGIONAL PLANNING COUNCIL  
THE TULALIP TRIBES

### TRANSIT AGENCIES

COMMUNITY TRANSIT  
EVERETT TRANSPORTATION SERVICE  
KITSAP TRANSIT  
METROPOLITAN KING COUNTY  
PIERCE TRANSIT  
SOUND TRANSIT

visit . . . [psrc.org](http://psrc.org)