

Port Projects in the Duwamish

Item No: 7a
Meeting Date: April 10, 2018

Terminal 105

Terminal 108

Terminal 107

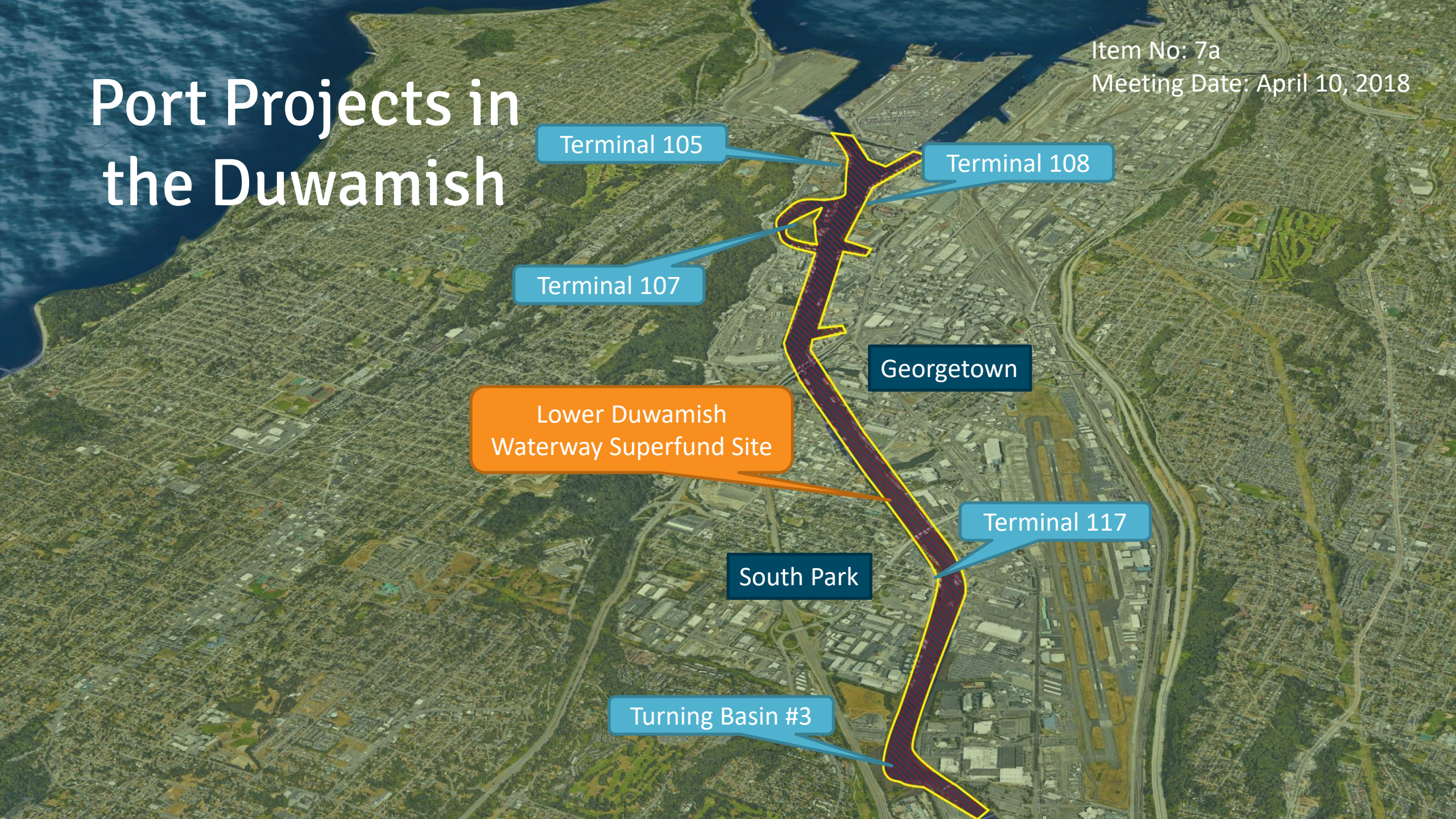
Georgetown

Lower Duwamish
Waterway Superfund Site

Terminal 117

South Park

Turning Basin #3



Habitat Recovery Projects in the Duwamish



Terminal 108



Terminal 105



Lower Duwamish Waterway Cleanup



The 6th Ave. Trolley Bridge was built in 1914, completed in 1917 and connected South Park and Georgetown. The jimb, built on the opposite bank of the river is the pump house for the Georgetown dam and still visible today. The pump house was built over the Duwamish river, was straightened and the stream built with large rock in the river.

Forch Kovage, 2015
Duwamish Revealed
@Culture



Lower Duwamish Waterway



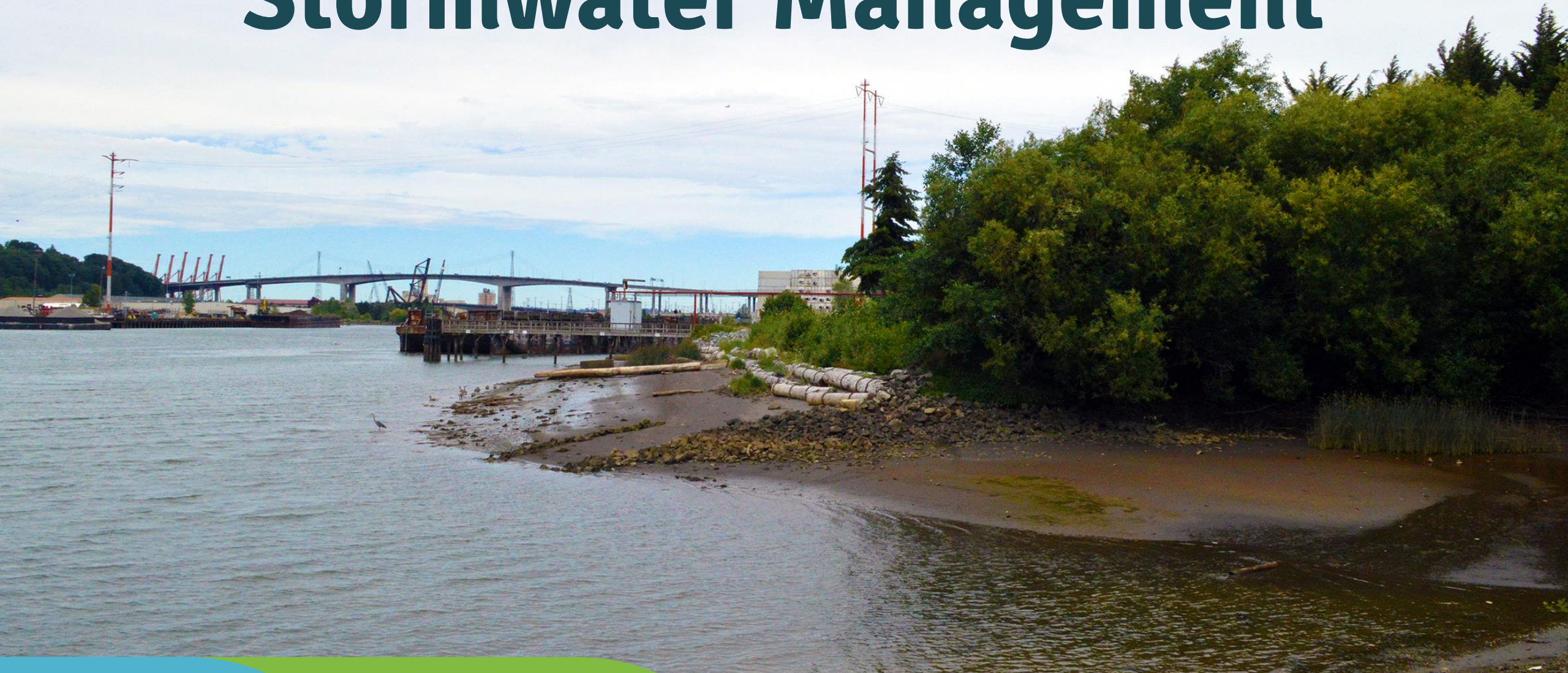
Terminal 117



Turning Basin #3



Stormwater Management



Stormwater



Stormwater



Community Engagement



Community Engagement



Community Engagement

Georgetown Green Wall



EPA ENVIRONMENTAL JUSTICE PILOT PROJECT: COMMUNITY CAPACITY BUILDING



Elizabeth Leavitt
Environment and Sustainability

Christina Billingsley
Environmental Engagement,
Public Affairs

Andrew Schiffer
Georgetown Resident

Tim Hamlin
Region 10 EPA

What is environmental justice?

- EPA identifies environmental justice to be achieved when everyone has:
 - the same degree of protection from environmental and health hazards, and
 - equal access to the decision-making process to have a healthy environment in which to live, learn, and work.

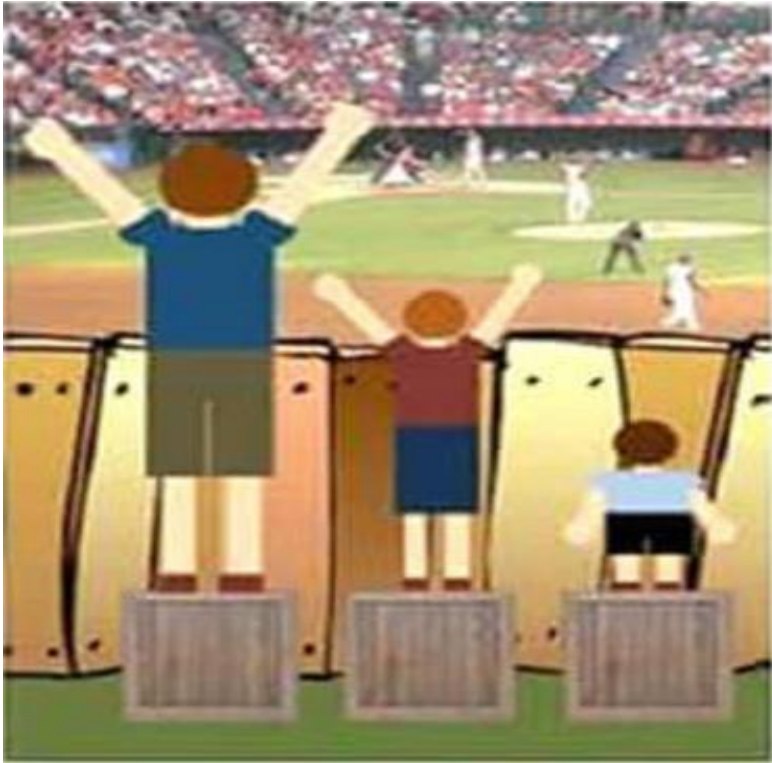


Environmental Equity is a key Port strategy

- Century Agenda Commitments
- Energy & Sustainability Committee Recommendations
- Commission involvement
- Near-Port community engagement
- Port authority to manage impacts in community
- Equity Leader hiring process



Equity



Equality: sameness



Equity: equal access



Addressing cause of inequity

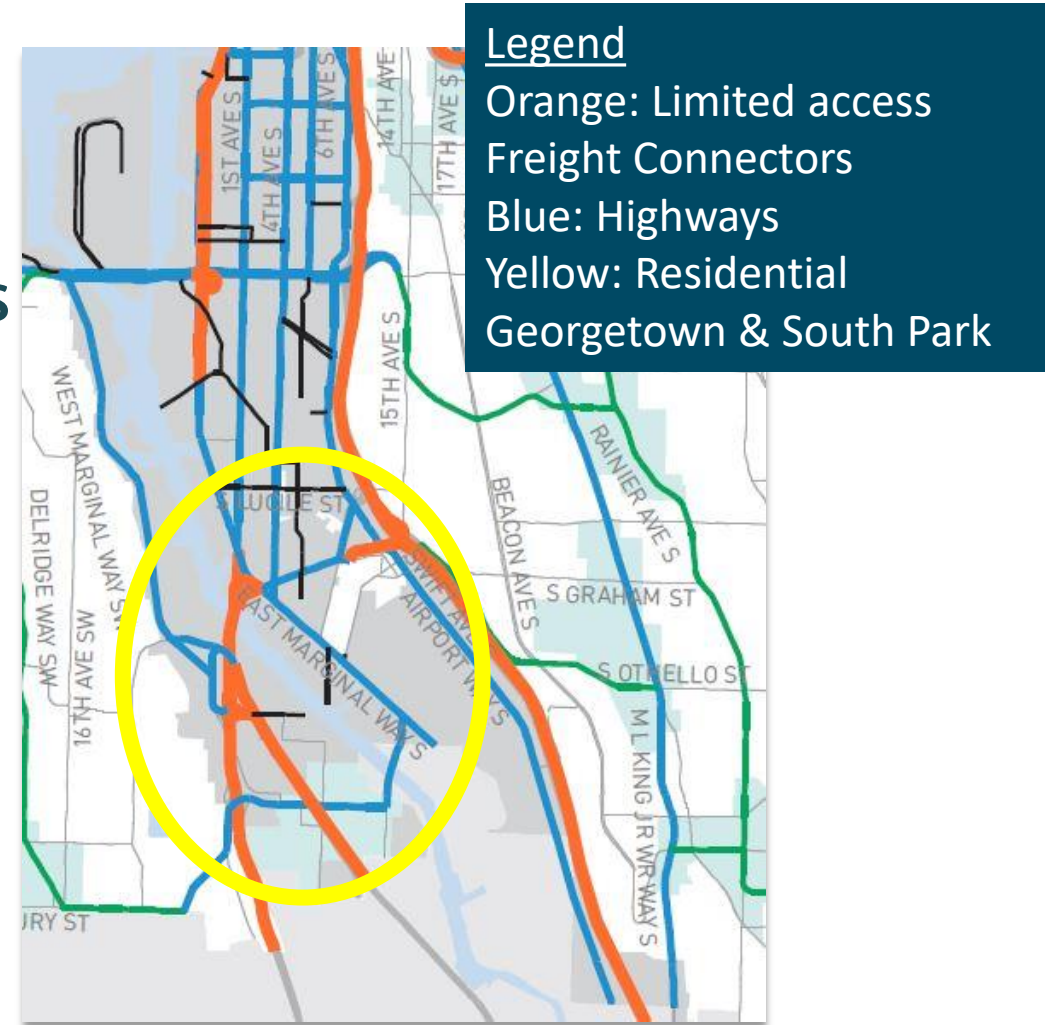
Project elements

- EPA-funded technical assistance
- Local hire of community specialists
- Listening sessions, trainings, tours
- EPA Ports Initiative Toolkit
- Exploration of innovative solutions
 - Good Neighbor Strategic Plan
 - Community Benefits Agreement



Why Duwamish Valley?

- 2013 Cumulative Health Impact Analysis
- Multiple sources contribute to cumulative health impacts for Georgetown and South Park residents
 - Highway and freight traffic
 - Railways
 - Private industry
 - Legacy contamination
 - Present-day contamination
 - Historic inequities and discriminatory practices

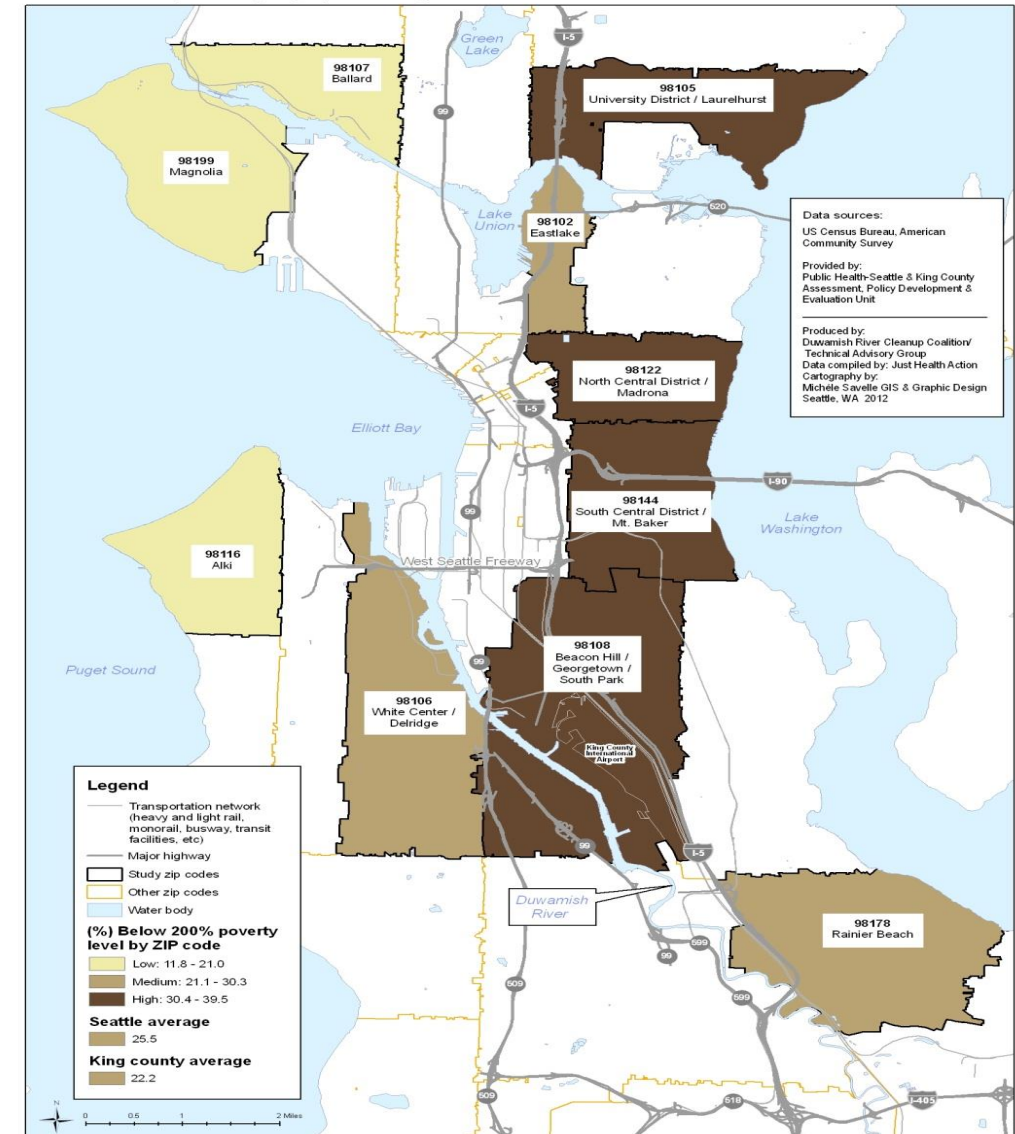


Socio-economic factor component

Percent Below 200% Poverty Level by ZIP code

- 30%-40% of residents in Zip Code 98108 live below the poverty level.
- Seattle average: 25.5%
- King County average: 22.2%

Figure 3. Percent Below 200% Poverty Level, by ZIP Code
Seattle, Washington, 5-year Average 2006-2010

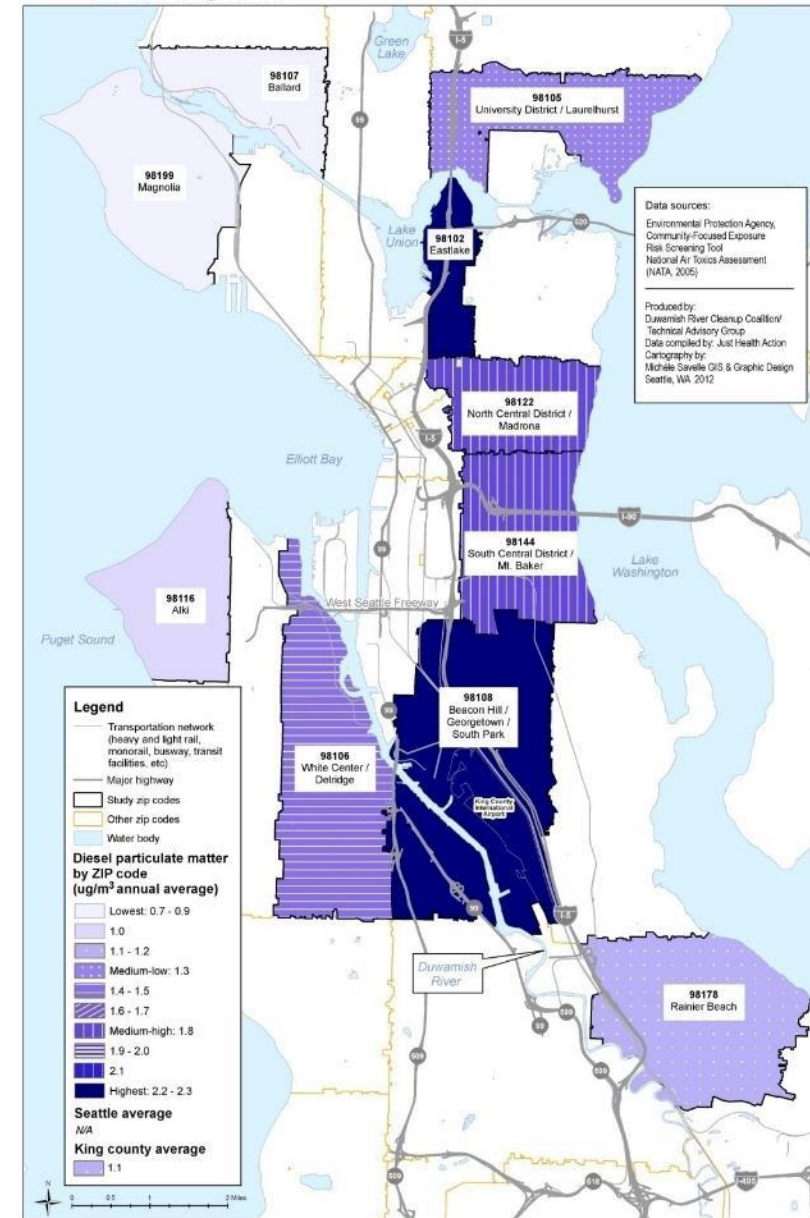


Environmental exposures

Annual Average Diesel Particulate Matter in human breathing zone ($\mu\text{g}/\text{m}^3$), by ZIP code

- Zip Code 98108 has the some of the highest annual average exposures, 2.2 to 2.3 $\mu\text{g}/\text{m}^3$.
- King County average: 1.1 $\mu\text{g}/\text{m}^3$
- Lowest average (ie: Ballard/Magnolia): 0.7 to 0.9 $\mu\text{g}/\text{m}^3$

Figure 8. Annual Average Diesel Particulate Matter in Human Breathing Zone ($\mu\text{g}/\text{m}^3$), by ZIP Code Seattle, Washington, 2005



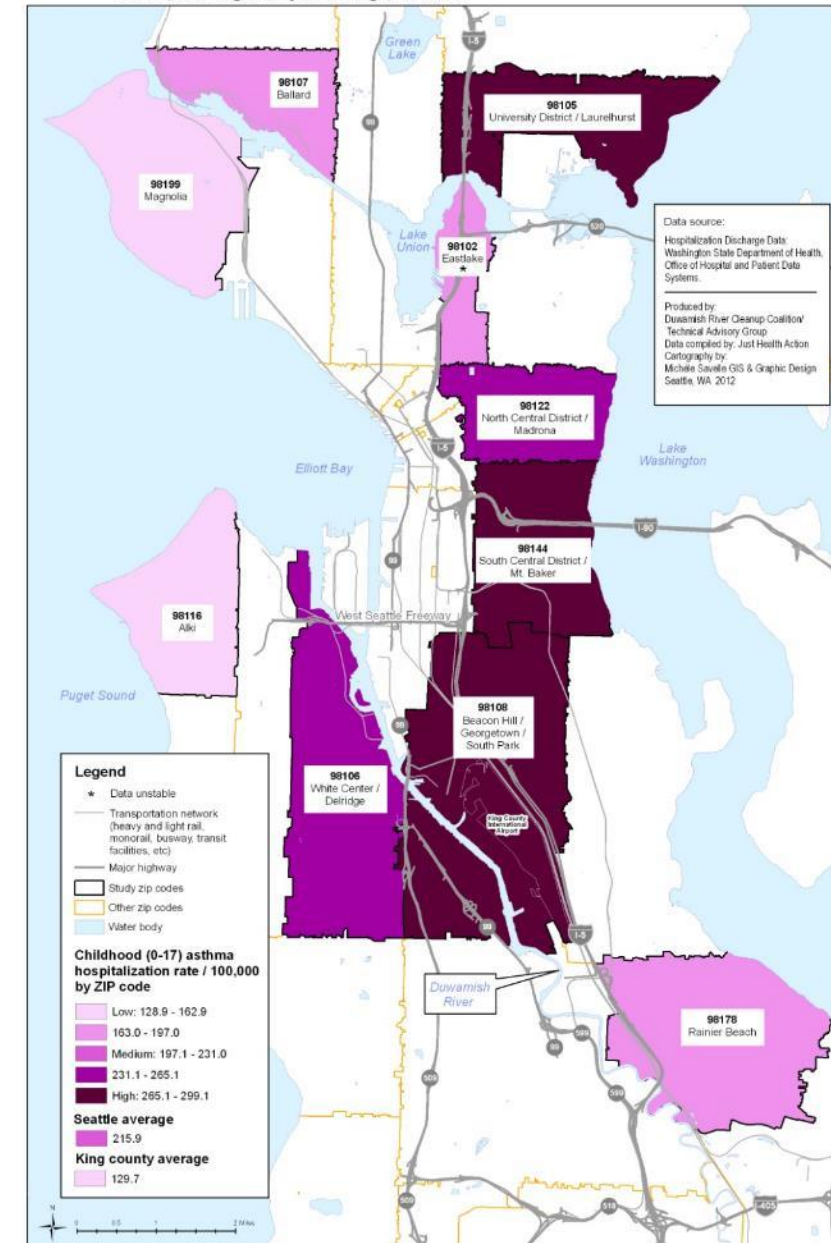
Many sources contribute to some of the highest diesel particulate matter exposures in the city.

Public health factors

Childhood asthma hospitalization rate per 100,000 by ZIP code

- Zip Code 98108 has the some of the highest rates, 265.1 – 299.1.
- King County: 129.7

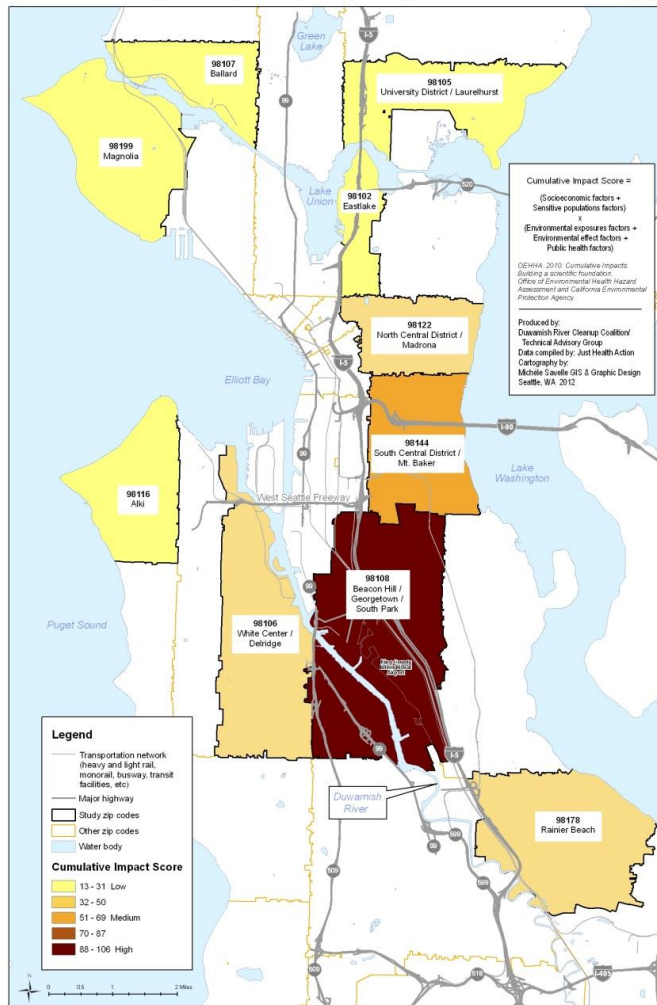
Figure A8. Childhood (0-17) Asthma Hospitalization Rate per 100,000, by ZIP Code Seattle, Washington, 5-year average, 2006-2010



Cumulative Impacts

Figure 17. Cumulative Impact Score by ZIP Code, Seattle, Washington

DRAFT FINAL v2
10/24/12



Indicator	Georgetown/ South Park Census tracts 109 and 112	Laurelhurst Census tracts 4100 and 4200	Seattle	King County
Life expectancy at birth (years)	73.3*	86.4*	81.5	81.5
Heart disease death rate per 100,000	202.9#	89.6*	138.4	137.8

*Source: Public Health Seattle & King County *p=0.05 from both KC and Seattle average #p= 0.05 for KC average only*

When added together, these multiple factors cause a “cumulative health impact” with significant outcomes.

Pilot Project - Port Outcomes

The project has identified new avenues to:

- Integrate new engagement best practices Port-wide
- Expand cultural competencies
- Build stronger community relationships
- Develop shared solutions and actions



Pilot Project – Community Outcomes

The project has identified new avenues to:

- Broaden understanding in community
- Forge new partnerships to support community empowerment through the Port's mission



Equity as defined by the PCAT ...



WE EXPECT:

Who owns this phrase?

EQUITY

FAIR TREATMENT, ACCESS, OPPORTUNITY AND ADVANCEMENT FOR

ALL PEOPLE, WHILE AT THE SAME TIME, STRIVING TO IDENTIFY AND ELIMINATE

BARRIERS THAT HAVE PREVENTED THE FULL PARTICIPATION OF SOME GROUPS.

1. ELEVATE VOICES BEEN PREVIOUSLY UNHEARD

2. IMPROVING EQUITY INVOLVES: INCREASING JUSTICE AND FAIRNESS WITHIN THE PROCEDURES AND PROCESSES OF INSTITUTIONS OR SYSTEMS, AS WELL AS

FAIR, INTENTIONAL DISTRIBUTION OF RESOURCES

human rights / basic needs

Community-Port collaboration

- Community list of opportunities and concerns
- Port response - “Short, Medium, and Long term” actions
- Community Benefits Agreement



Opportunities identified

- **Community Capacity Building and Port Relationship Building**
Support the community in overcoming historic and economic disparities to fully participate in Port benefits to the region.
- **Environmental Health**
Reduce environmental harms that impact the health and livability of near-Port Duwamish Valley communities.
- **Economic Development**
Promote equitable development in the Duwamish Valley by providing economically disadvantaged near-Port community members with increased access to Port-related economic benefits.



Next steps – 2018 to 2020

- Continue working with Duwamish Valley residents to take action and improve access to Port benefits
- Memorialize our commitments in a Community Benefits Agreement
- Apply lessons-learned to other near-Port communities



Questions?

