

PORT OF SEATTLE

Sea-Tac International Airport Economic Impacts

Port Commission Public Meeting

January 30, 2018

AGENDA

Sea-Tac International Airport Economic Impacts

Direct Impacts of Sea-Tac

Economic Impacts of Sea-Tac

Community Impacts

DIRECT IMPACTS OF SEA-TAC

Economic Impacts of Sea-Tac International Airport, 2017

Category	Jobs	Business Revenue (mils 2017 \$)	Wages (mils 2017 \$)	Compensation (incl. Benefits) (mils 2017 \$)
On-site Airport Activity	19,100	\$5,574.8	\$1,109.8	\$1,403.0
Passenger Airlines and Services	6,700	\$2,386.3	\$399.4	\$503.2
Airport Services and Vendors	7,500	\$1,575.4	\$412.5	\$519.4
Ground Transportation*	600	\$318.8	\$25.2	\$31.5
Contract Const. and Consulting	2,000	\$498.3	\$124.1	\$153.7
Air Cargo	2,300	\$796.0	\$148.6	\$195.1
Visitor Impacts	68,200	\$5,906.5	\$1,878.0	\$2,247.8
Total	87,300	\$11,481.3	\$2,987.8	\$3,650.8

Source: Washington State Employment Security Department, 2017; Washington State Office of Financial Management, 2017; U.S. Bureau of Labor Statistics, 2017; Port of Seattle, 2017; Community Attributes Inc., 2017.

*The ground transportation direct estimates only include the impact of car rental activities as estimated from the 2017 Car Rental Gross Sales data. The impact of other forms of ground transportation to and from the Airport such as cabs are captured as part of the Visitor Impacts.

ECONOMIC IMPACTS OF SEA-TAC, WASHINGTON

Economic Impacts of Sea-Tac International Airport, 2017

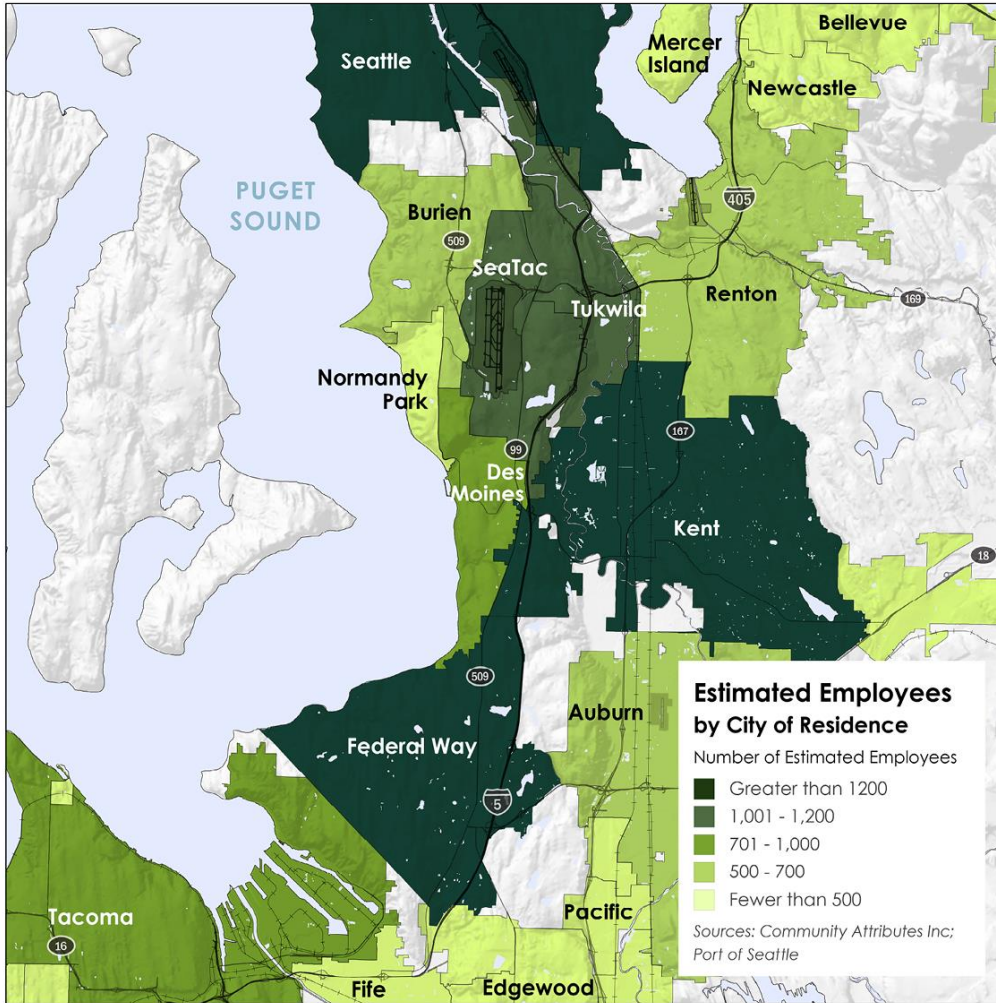
	On-site Airport Activity	Visitors	Total
Jobs	44,000	107,400	151,400
Total Compensation (mils 2017 \$)	\$2,760.2	\$4,339.3	\$7,099.5
Business Revenue (mils 2017 \$)	\$10,120.5	\$12,357.5	\$22,477.9

Source: Washington State Employment Security Department, 2017; Washington State Office of Financial Management, 2017; U.S. Bureau of Labor Statistics, 2017; Port of Seattle, 2017; Community Attributes Inc., 2017.

- Sea-Tac International Airport's on-site activities support an additional 1.3 jobs for every direct job.
- Overall, the airport supports a total of 1.7 jobs per direct job throughout the Washington economy.
- Every dollar of direct output of Sea-Tac's onsite activities supports an additional \$0.82 of output throughout Washington's economy.
- In total every dollar of output of Sea-Tac International Airport supports a total of \$1.96 throughout the Washington economy.

AIRPORT WORKERS BY CITY OF RESIDENCE, 2017

Community Impacts



	Workers
SEATTLE	1,720
FEDERAL WAY	1,500
KENT	1,420
SEA TAC	1,050
TUKWILA	1,030
TACOMA	970
DES MOINES	740
RENTON	580
BURIEN	540
AUBURN	530
LAKESWOOD	270
BELLEVUE	210
PUYALLUP	160
FIFE	150
NORMANDY PARK	100
SHORELINE	100
OTHER	8,030
TOTAL:	19,100

Source: Port of Seattle, 2017; Community Attributes Inc., 2017.

AIRPORT EMPLOYMENT AND LABOR FORCE BY CITY

Community Impacts

City	Estimated Airport Employment	Labor Force (16 years +)	Share of Labor Force
Seattle	1,720	418,400	0.4%
Federal Way	1,500	49,640	3.0%
Kent	1,420	65,660	2.2%
SeaTac	1,050	14,850	7.1%
Tukwila	1,030	10,730	9.6%
Tacoma	970	106,250	0.9%
Des Moines	740	16,670	4.4%
Renton	580	55,630	1.0%
Burien	540	26,040	2.1%
Auburn	530	38,200	1.4%
Lakewood	270	29,020	0.9%
Bellevue	210	74,660	0.3%
Puyallup	160	20,770	0.8%
Fife	150	5,440	2.8%
Normandy Park	100	3,710	2.7%
Shoreline	100	30,990	0.3%

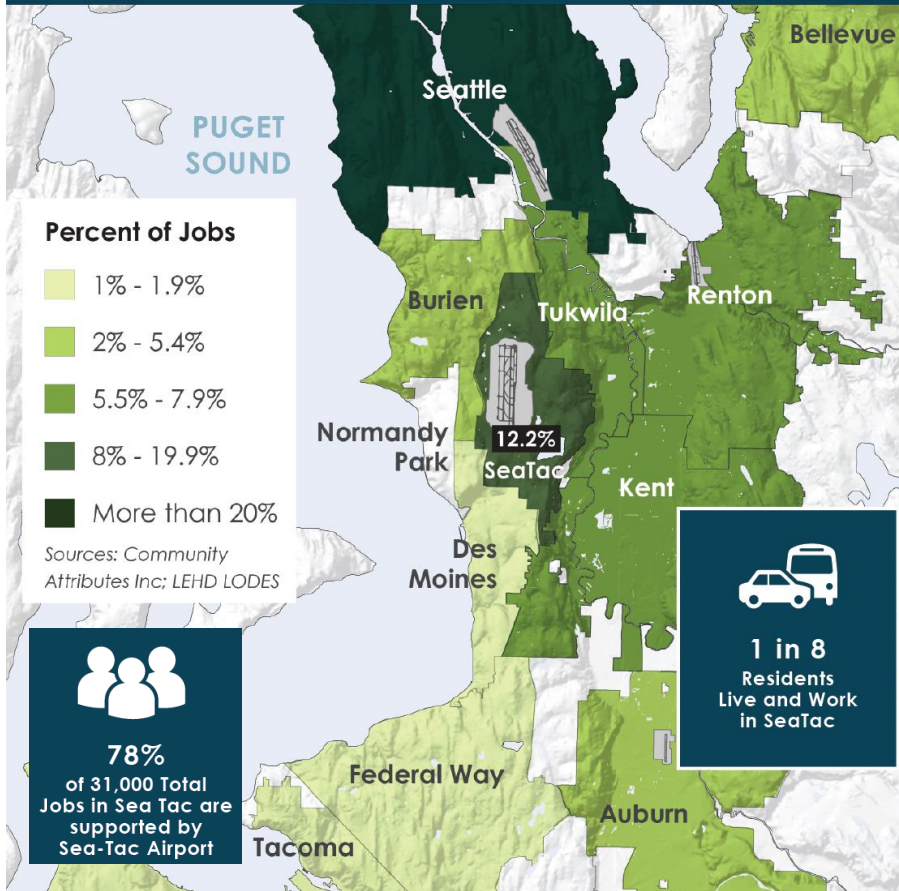
- **Seattle, Federal Way, Kent, SeaTac and Tukwila** are home to more than 1,000 airport employees.
- Among cities with more than 100 airport employees, these employees make up more than 4% of the total resident labor force in **Tukwila, SeaTac and Des Moines**.

Source: Port of Seattle, 2017; American Community Survey, 2017; Community Attributes, 2017.

SEATAC

Economic Activity Driven by Sea-Tac International Airport, 2017

Where SeaTac Residents Work



24,100

Jobs in SeaTac



\$6 billion

Economic Activity



\$2 billion

Total Compensation



34%

Estimated SeaTac GDP



1,050

Estimated Airport Employees Live in SeaTac



\$71 million

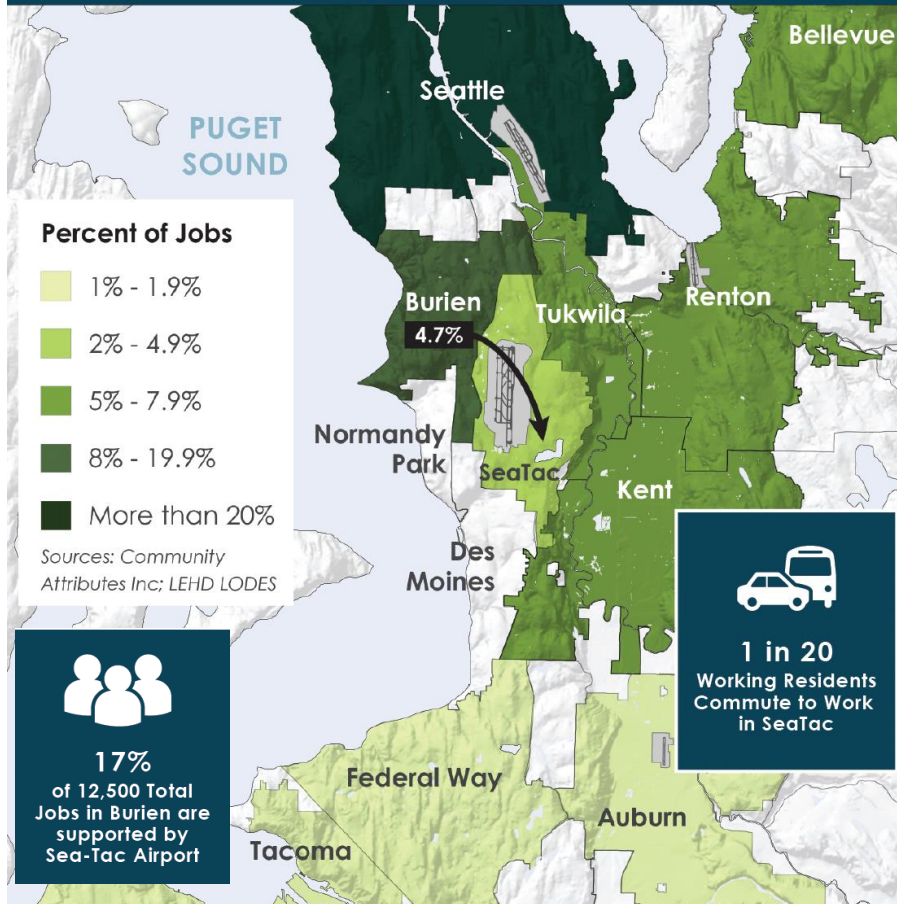
State and Local Taxes

Sources: Port of Seattle, 2017; Puget Sound Regional Council, 2017; Washington State Office of Financial Management, 2017; U.S. Census Bureau, 2017; Washington State Employment Security Department, 2017; U.S. Bureau of Economic Analysis, 2017; Community Attributes, 2017..

BURIEN

Economic Activity Driven by Sea-Tac International Airport, 2017

Where Burien Residents Work



2,100
Jobs in Burien



\$138 million
Economic Activity



\$106 million
Total Compensation



6%
Estimated Burien GDP



540
Estimated Airport
Employees Live in Burien



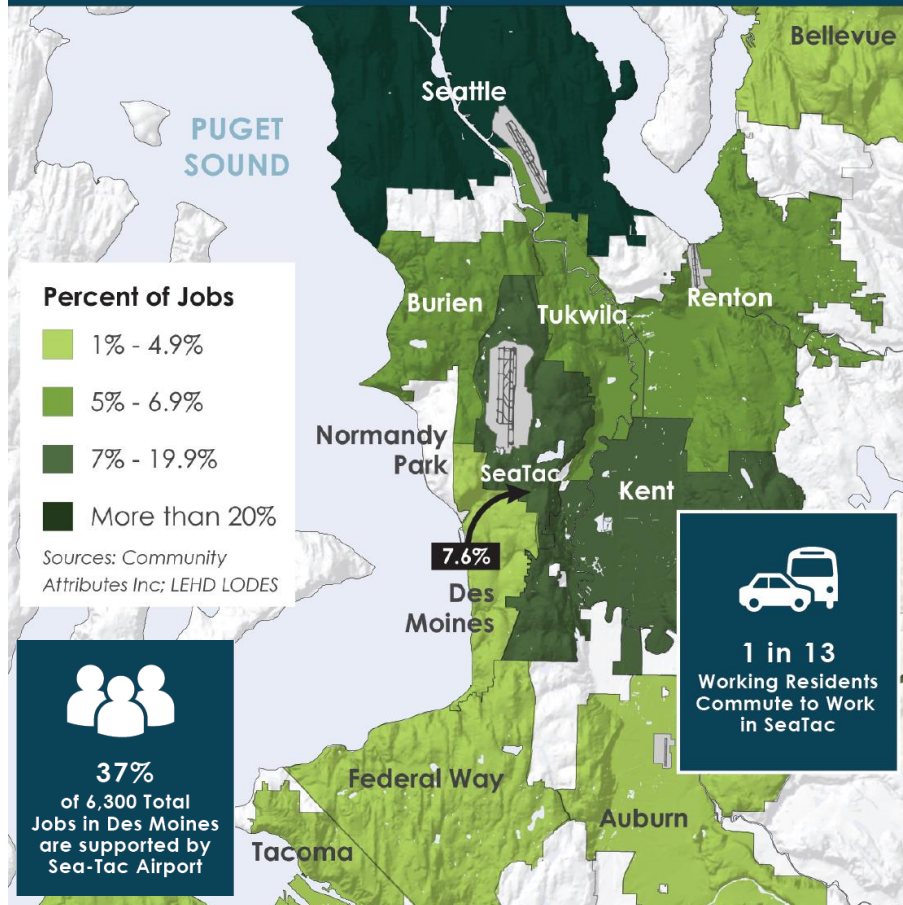
\$4 million
State and Local Taxes

Sources: Port of Seattle, 2017; Puget Sound Regional Council, 2017; Washington State Office of Financial Management, 2017; U.S. Census Bureau, 2017; Washington State Employment Security Department, 2017; U.S. Bureau of Economic Analysis, 2017; Community Attributes, 2017.

DES MOINES

Economic Activity Driven by Sea-Tac International Airport, 2017

Where Des Moines Residents Work



2,300

Jobs in Des Moines



\$115 million

Economic Activity



\$119 million

Total Compensation



12%

Estimated Des Moines GDP



740

Estimated Airport Employees Live in Des Moines



\$3 million

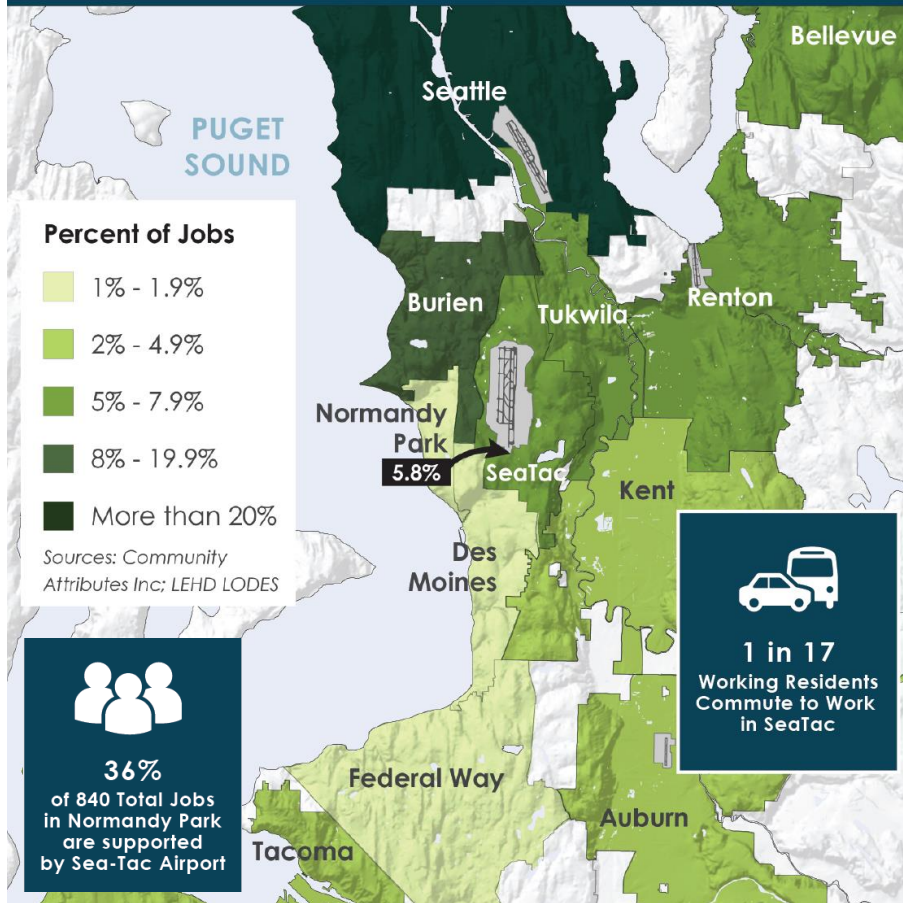
State and Local Taxes

Sources: Port of Seattle, 2017; Puget Sound Regional Council, 2017; Washington State Office of Financial Management, 2017; U.S. Census Bureau, 2017; Washington State Employment Security Department, 2017; U.S. Bureau of Economic Analysis, 2017; Community Attributes, 2017..

NORMANDY PARK

Economic Activity Driven by Sea-Tac International Airport, 2017

Where Normandy Park Residents Work



300

Jobs in Normandy Park



\$16 million

Economic Activity



\$16 million

Total Compensation



12%

Estimated Normandy Park GDP



100

Estimated Airport Employees Live in Normandy Park



\$0.4 million

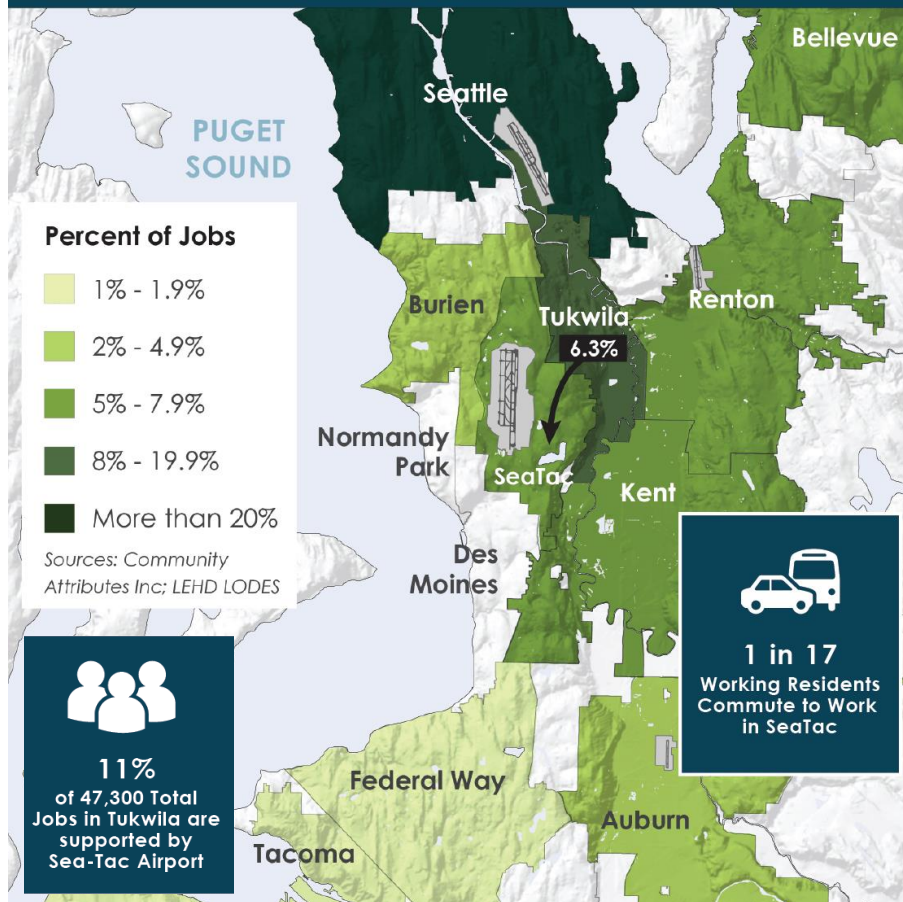
State and Local Taxes

Sources: Port of Seattle, 2017; Puget Sound Regional Council, 2017; Washington State Office of Financial Management, 2017; U.S. Census Bureau, 2017; Washington State Employment Security Department, 2017; U.S. Bureau of Economic Analysis, 2017; Community Attributes, 2017.

TUKWILA

Economic Activity Driven by Sea-Tac International Airport, 2017

Where Tukwila Residents Work



5,200

Jobs in Tukwila



\$742 million

Economic Activity



\$274 million

Total Compensation



3%

Estimated Tukwila GDP



1,030

Estimated Airport Employees Live in Tukwila



\$13 million

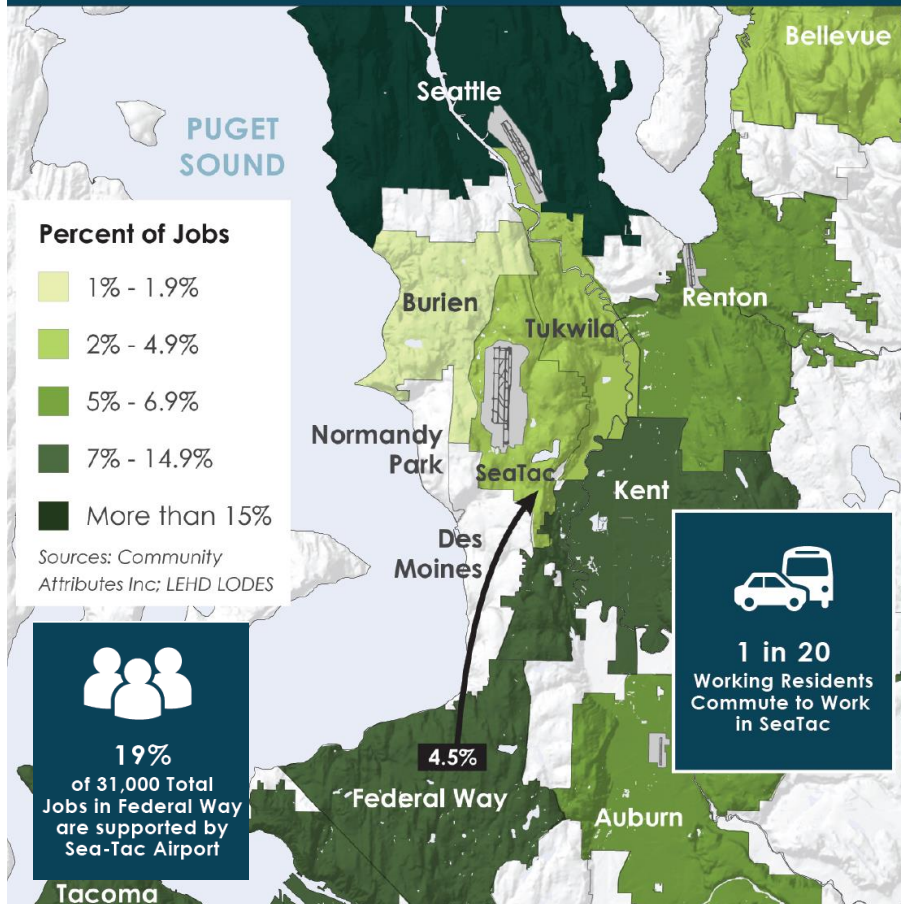
State and Local Taxes

Sources: Port of Seattle, 2017; Puget Sound Regional Council, 2017; Washington State Office of Financial Management, 2017; U.S. Census Bureau, 2017; Washington State Employment Security Department, 2017; U.S. Bureau of Economic Analysis, 2017; Community Attributes, 2017.

FEDERAL WAY

Economic Activity Driven by Sea-Tac International Airport, 2017

Where Federal Way Residents Work



5,900

Jobs in Federal Way



\$402 million

Economic Activity



\$297 million

Total Compensation



6%

Estimated Federal Way GDP



1,500

Estimated Airport Employees
Live in Federal Way



\$10 million

State and Local Taxes

Sources: Port of Seattle, 2017; Puget Sound Regional Council, 2017; Washington State Office of Financial Management, 2017; U.S. Census Bureau, 2017; Washington State Employment Security Department, 2017; U.S. Bureau of Economic Analysis, 2017; Community Attributes, 2017..

QUESTIONS?