

Annual Report 2018



Puget Sound Regional Council



May 2019

A MESSAGE FROM THE PRESIDENT AND EXECUTIVE DIRECTOR



Dave Somers

PSRC President – Snohomish County Executive



Josh Brown

PSRC Executive Director

A Region in Transformation

This year the region celebrated progress on key projects that were decades in the making.



Paine Field Passenger Terminal —

“We are so proud to be part of such a strong partnership that delivered a vital new resource to the Puget Sound region: a state-of-the-art passenger terminal that will benefit our economy as much as passengers.”

– Snohomish County Executive Dave Somers, PSRC President

The new Highway 99 tunnel opened, and the Alaskan Way Viaduct is coming down to make way for a revitalized central Seattle waterfront. Paine Field launched commercial flights and opened a world class terminal. Kitsap Transit expanded its popular fast ferry program, adding new service connecting Kingston and downtown Seattle. At Point Ruston, work is moving forward on building new phases of this mixed-use development on Commencement Bay with apartments, housing, entertainment and public spaces.

More major projects are nearing completion in the next five years. Light rail to Northgate will open in 2021 and in Bellevue and east King County in 2023. Extensions to Federal Way, Lynnwood and downtown Redmond will be complete in 2024.



The end is in sight for a decades-long effort to widen I-5 and add HOV lanes and make other improvements through Pierce County, including a new Puyallup River Bridge and ramp to SR 167.

Surging growth has revved up the pace of change in the region. Businesses are investing here, and the region has one of the strongest job markets in the country. The region's transportation systems - roads, transit, ferries and airports – are moving more people than ever before. New

housing construction is accelerating, but the region needs to do more to address affordability and ensure all residents have access to opportunity and the services they need to thrive. Protecting and enhancing the natural environment continues to be a top concern as the region grows.

By 2050, the region's population is expected to grow to 5.8 million. To get ready, PSRC is developing VISION 2050 to guide growth in ways that support a healthy environment, strong economy and thriving communities. We want to ensure all of our residents' quality of life improves along with the economic statistics.

Work on the VISION 2050 plan has kicked into high gear this year, with three growth strategy options released for public comment in a draft Supplemental EIS. We encourage you to stay in the loop and provide input as the plan moves to adoption next spring.

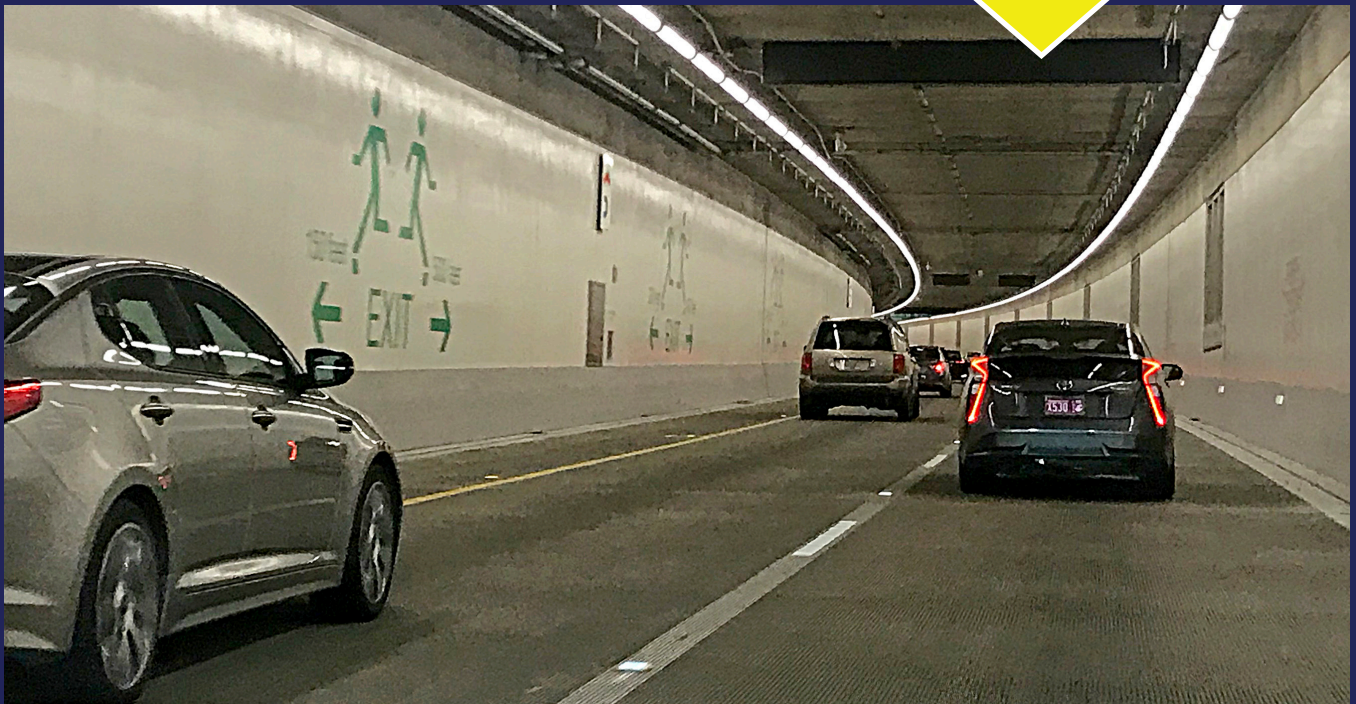
We have also been busy with the Regional Aviation Baseline Study supported by a grant from the Federal Aviation Administration. This study is intended to provide a clear picture of the needs of the region's aviation system and inform future decisions by regional and state leaders.

PSRC continues to secure federal transportation dollars for priority projects in the region. In 2018 the agency selected projects to receive \$533 million in federal highway and transit funding and approved the 2019-2022 Regional Transportation Improvement Program leveraging \$30 billion for projects – one of the largest investment programs of any metropolitan area in the U.S.

In this time of rapid growth and change, the work we do at the city, county and regional levels has never been more important. Issues like mobility and housing affordability can't be solved alone and people expect elected leaders to work together and produce results. PSRC is a place where that happens every day, and we're grateful for everyone who is active in our work. We invite you to stay in touch and get involved – attend a meeting, check out our amazing data products, and provide input on plans. We look forward to hearing from you!

Dave Somers
PSRC President – Snohomish County Executive

Josh Brown
PSRC Executive Director



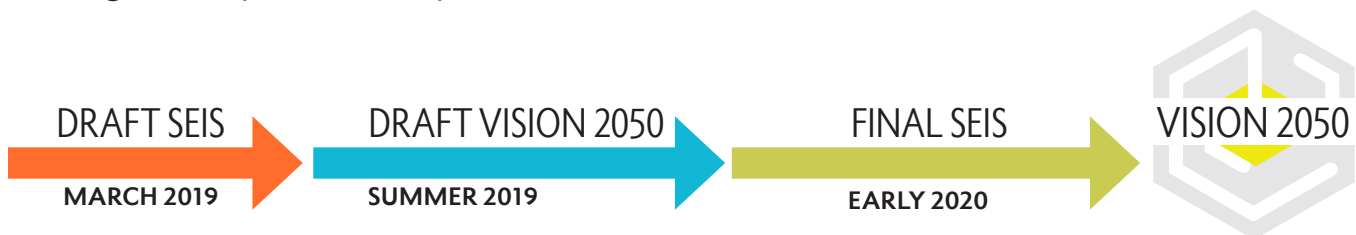




Making life better as the region grows

PSRC is leading work to extend the region's growth plan to 2050.

Forecasts show the region needs to make room for **1.8 million more people** and **1.2 million more jobs by 2050**. PSRC is developing VISION 2050 to guide growth to support thriving communities, a strong economy and a healthy environment.



Environmental review of growth alternatives

From February to April 2019, PSRC asked for public input on a Draft Supplemental Environmental Impact Statement (SEIS). The Draft SEIS evaluates the environmental impacts of three alternatives for VISION 2050 that distribute growth in unique patterns throughout the region:

- Stay the Course
- Transit Focused Growth
- Reset Urban Growth

PSRC's Growth Management Policy Board is using public input from the Draft SEIS to define a preferred growth alternative this spring, which is likely to combine elements from the three alternatives presented in the SEIS.

VISION 2050 is also an opportunity to consider regional approaches to increase housing supply and affordability, tackle climate change, improve the health of Puget Sound, and support the continued development of great communities throughout the Puget Sound region.

A draft VISION 2050 plan is expected to be ready for public review in summer 2019.

Regional Open Space Conservation Plan

The region's first ever Regional Open Space Conservation Plan was completed in 2018. The plan maps the open space network in King, Pierce, Snohomish and Kitsap counties and sets out the priority actions needed to sustain open spaces for the long term. The plan will be incorporated into planning for VISION 2050.



In 2019, the Mountains to Sound Greenway was designated a National Heritage Area.



Everett, Langus Riverfront Park

Supporting local planning

Toolbox Peer Networking

PSRC's popular Toolbox Sessions focus on best practices and resources for local planning. Recent topics included Parking & Housing Affordability, Siting Facilities for Whole Communities, Social Equity, and Land Use and Transportation Technology.

Regional center plans move to certification

The region's cities are working hard to put plans in place to attract growth to designated regional centers. PSRC is responsible for reviewing and certifying subarea plans by jurisdictions with designated regional centers. In the last year, PSRC certified the subarea plans for regional growth centers in **University Place, Everett and Lakewood**, along with the **Sumner–Pacific Manufacturing Industrial Center**.



VISION 2040 Award Winners

In 2018, PSRC celebrated six award winning projects that help create a more livable region.



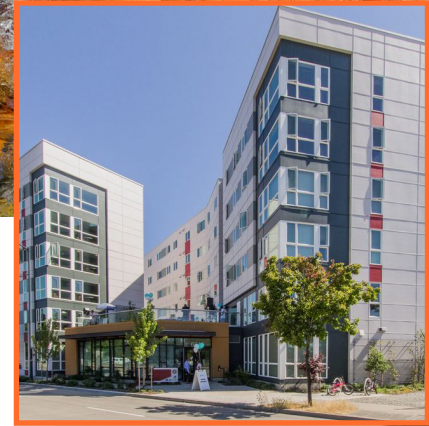
The Estelle

The Estelle, located near the Mount Baker light rail station, provides permanent supportive housing for 91 formerly chronically homeless single adults.



The Marion West

The Marion West development in Seattle's University District provides housing and job training for formerly homeless young adults and housing for people making 40 to 60 percent of the area median income.



Mercy Othello Plaza

Mercy Othello Plaza, near the Othello light rail station in south Seattle, provides 108 energy-efficient affordable housing units for individuals and families earning \$18,000 to \$55,000 a year.



North Viking Transit Center and Base

The North Viking Transit Center and Base offers 265 park and ride stalls and charging stations, an ADA accessible environment, and a seamless transfer spot for North Kitsap routes.



Kitsap Transit Passenger Only Ferry Program

This popular new passenger ferry service now offers high speed ferry service to downtown Seattle from Bremerton and Kingston. Additional service between Seattle and Southworth is planned to start in 2020.



Edmonds Highway 99 Subarea Plan

The Edmonds Highway 99 Subarea Plan seeks to increase housing and jobs along Highway 99 and identifies transportation improvements to support these changes.

“Passenger and cargo volumes at the region’s airports are at record levels due to the strength of the regional economy. Now is the right time to identify future demand on the region’s airfields and air space.”

– Josh Brown, PSRC, Executive Director



Paine Field —

“The central Puget Sound region is already a worldwide leader in aerospace and information technology, and we plan on being a world leader in the space industry as well.”

– Councilmember Terry Ryan, President, Central Puget Sound Economic Development District

Sustaining a Strong Economy

PSRC works with partners on initiatives to strengthen the region's global competitiveness and increase economic opportunity.

Regional Aviation Baseline Study

Along with the region's booming population and job growth, air passenger traffic and cargo volumes have reached record levels and are expected to increase. Continued, coordinated planning is essential for ensuring that the regional airport system can support existing and future demand.

PSRC is leading a Regional Aviation Baseline Study supported by a \$1.6 million grant from the Federal Aviation Administration. The study will produce information critical for understanding the region's aviation needs - and options for meeting those needs in the future. The study will set the stage for future planning and will be the first phase of potentially more focused studies on specific areas of emphasis.

Study shows space sector is growing in region

From rocket development to space vehicle manufacturing, Washington is an increasingly important hub for a growing commercial space sector, according to a PSRC study released in 2018.

The **Washington State Space Economy** report explored trends in the overall sector and identified areas for future work to grow the industry.

Space companies like Blue Origin already directly employ about 2,900 people in the space industry. Business activities tied to direct, indirect and induced impacts of the space industry will contribute an estimated \$1.8 billion in economic activity to Washington communities in 2018.

Competitiveness report finds Washington is best place for aerospace

Governor Inslee's Choose Washington New Mid-Market Airplane Council is working to make the business case for Washington state as the preferred site for Boeing's new NMA program.

An independent competitiveness study was released in June, finding that Washington is the top location for aerospace design and manufacturing.

PSRC has provided staff support to the NMA Council—and many of PSRC's member jurisdictions participate on the NMA Council and/or have contributed funds to the effort.

**“Washington has an aerospace supercluster like none other in the country...
by any measure, Washington is leading the way and offers the most competitive environment
and workforce for companies seeking to build world - class planes.”**

– Governor Jay Inslee



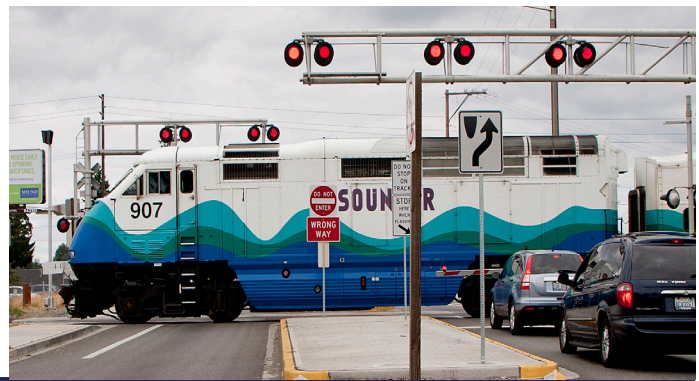
Investing in Transportation

Converting jumbo ferries to hybrid electric

PSRC provides funding for regional transportation projects that support the region's growth strategy.

PSRC selects projects that will receive transportation funding from the Federal Highway Administration and the Federal Transit Administration.

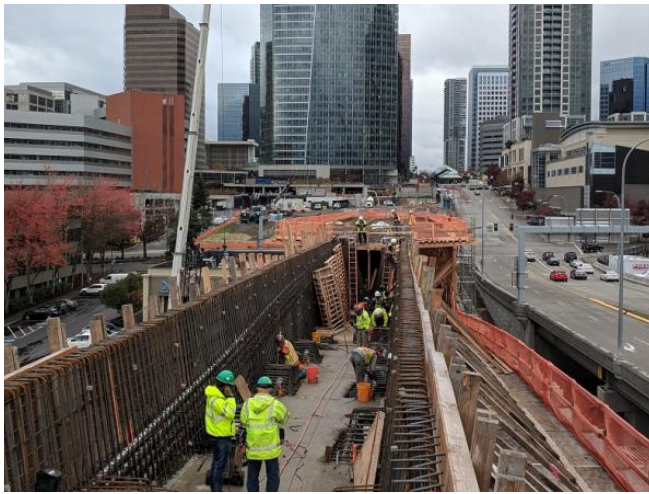
In 2018, **\$533 million in PSRC's federal transportation funds was awarded** to more than a hundred projects that make a big impact.



Adding more frequent service on South Sounder



Bus rapid transit in King, Pierce and Snohomish counties



How are projects selected?

PSRC conducts a rigorous, merit-based project selection process. Projects are scored based on how they meet established criteria, including support for centers and other key aspects of the region's growth strategy.

Because there are always more projects than funding available, PSRC ranks unfunded projects on contingency lists so the agency can quickly distribute new funding that may come available.

In 2018, an extra \$66 million in federal transportation funding became available to the region and PSRC was able to quickly direct those funds to ready-to-go contingency projects.

Regional Transportation Improvement Program



Keeps region eligible for federal funding

70% of the projects
are for construction phases

526 projects
that leverage a combined
investment of \$33.1 billion

A key role of PSRC is to maintain a four - year program of transportation projects in the region. The 2019-2022 Regional Transportation Improvement Program was approved by the PSRC Executive Board in October 2018 and is updated monthly with the most current information.

Transit agencies coordinating transformative investments

PSRC'S annual Transit Integration Report provides examples of how agencies are coordinating to improve transit performance throughout the region. The 2018 report highlighted how agencies and local governments are working together on major expansions of regional transit hubs, including Colman Dock, Tacoma Dome Station and Northgate Station.



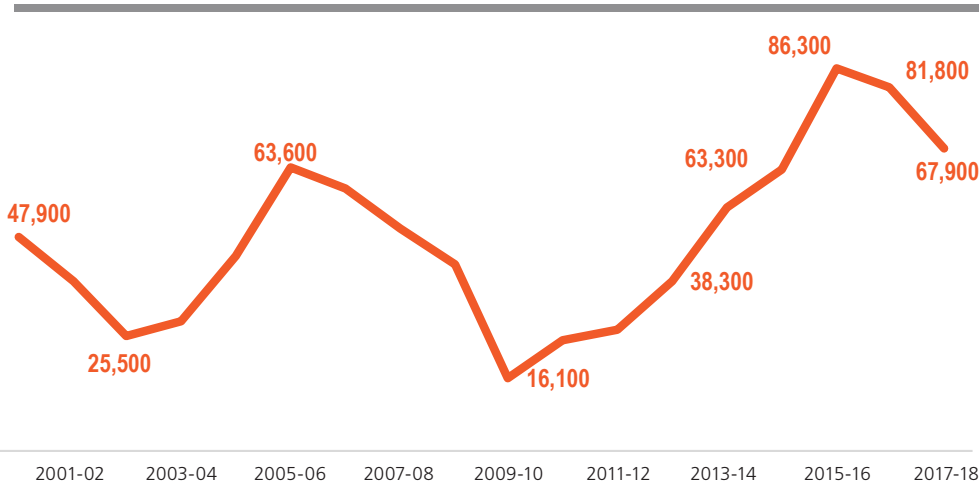


Data from a Growing Region

PSRC offers data and forecasts for regional and local planning.

Puget Sound Trends

Annual Population Change in the Central Puget Sound Region



The region is a magnet for newcomers. The four-county region added 67,860 people in the past year, the third highest single-year increase in the past two decades.

Cities are growing. Most growth is going to the region's cities, especially larger cities with designated regional growth centers, including Seattle, Redmond, Kent, Bellevue and Auburn. This trend is consistent with the region's growth strategy.

jobs at a fast pace. From 2017 to 2018, the region added 63,000 jobs, the biggest annual increase in five years. Since 2010, 406,900 jobs were added— which means nearly a quarter of all current jobs in the region are new since 2010.

The region continues to add

Home prices and rents have risen sharply in recent years but show signs of stabilizing. While data show that growth of home prices and rents has eased up over the past year, housing affordability remains a significant challenge in the region. In March 2019 the median rent in the metro area was \$1,930 per month and the median home price was \$492,000.

More people are using the region's transit system. Since 2010, transit ridership has grown almost twice as fast as population. Growth in transit boardings in the region has exceeded any other similarly sized region in the country.



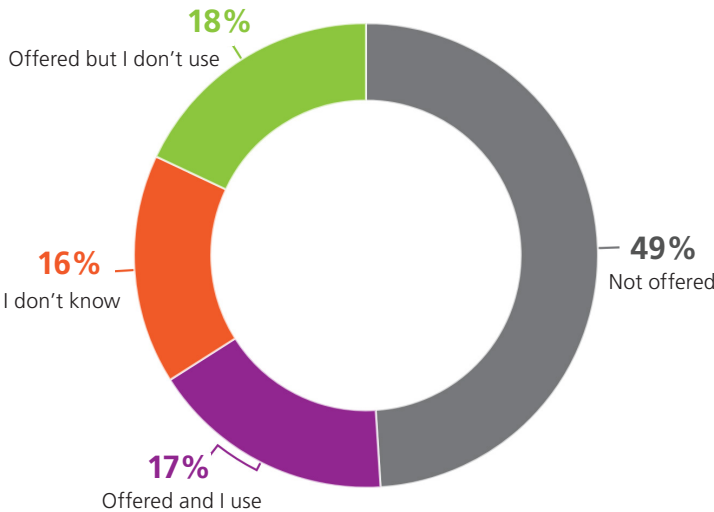


Sea-Tac Airport is busier than ever. Between 2010 and 2017, Sea-Tac Airport passenger volumes have grown faster than any other large airport in the country. Passenger volumes have grown by more than 47 percent since 2010.

Fewer people are driving alone to work. Since 2010, the share of commuters driving alone decreased in the region. Meanwhile, transit shares increased about 2%. Walking, biking and other modes remained consistent at about 6% of total daily work trips.

Puget Sound Travel Study offers insights on transportation behavior

About one third of workers in the region report access to free or subsidized transit.

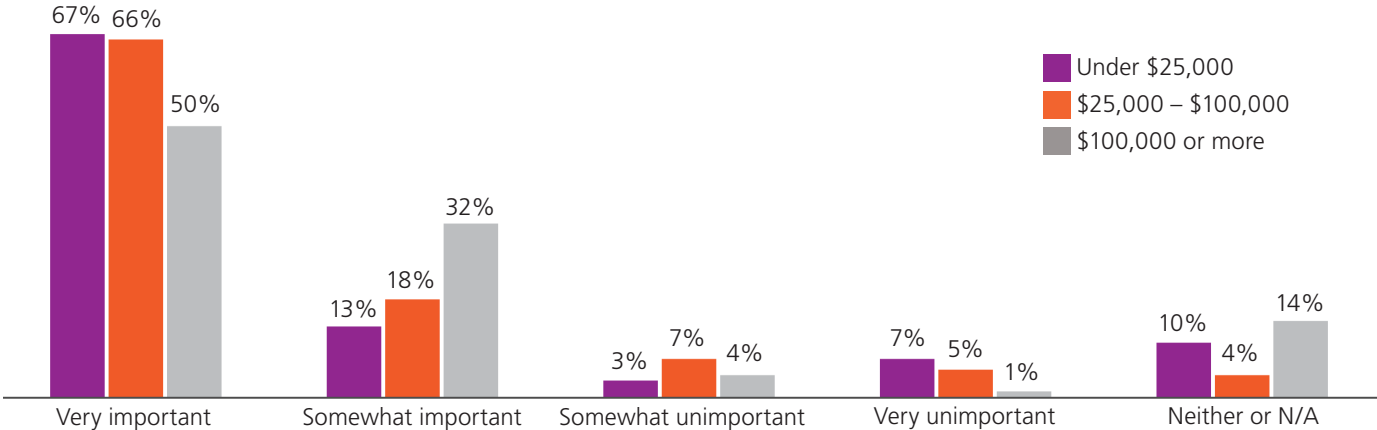


PSRC conducts the Puget Sound Travel Survey to collect information from households in the region about how and where they travel. The goal of the survey is to obtain a complete picture of travel patterns in the region and improve the accuracy of PSRC's transportation forecasts and modeling. A new round of the survey is kicking off in the spring of 2019.

Data from the previous survey is available for anyone to download on PSRC's website. PSRC recently published a series of data highlights from the 2017 survey.



Affordability is consistently the top factor in home choices



“We continue to look for ways to make our work more accessible to the public. PSRC is working hard to bring in tools like closed captioning and support for people who are visually impaired. We place a high priority on improving access and participation in regional planning and policy making.”

– Pierce County Executive Bruce Dammeier, PSRC Vice President & Operations Committee Chair



Point Ruston, Pierce County

About the Puget Sound Regional Council

PSRC is the regional planning organization for the central Puget Sound region. Our members include King, Pierce, Snohomish and Kitsap counties, cities and towns, ports, state and local transportation agencies and tribal governments within the region. Our work includes:

- Planning for transportation, growth management, and economic development
- Funding for priority transportation projects
- Providing regional data and forecasts on transportation, land use, population and the economy

Budget and Work Program

PSRC's work is funded by a combination of federal and state grants, dues paid by members, and other local sources. The agency's proposed 2020–2021 biennial budget is \$27.4 million, and supports regional planning, funding, data activities and services to PSRC members.

In 2019, PSRC received a Distinguished Budget Award for the second year in a row from the Government Finance Officers Association, which "reflects the commitment of the governing body and staff to meeting the highest principles of governmental budgeting."

PSRC receives clean audit

PSRC received a clean audit result from the Washington State Auditor for 2018, the seventh clean audit in a row. In the last 18 years, PSRC has had just one finding. The audit covered the financial statements for both PSRC and the Central Puget Sound Economic Development District, and accountability and federal grant compliance for PSRC.

Federal certification review

PSRC successfully met the requirements of a certification review by the Federal Highway Administration and Federal Transit Administration in 2018. There were no corrective actions and the certification report included commendations for PSRC's work, including:

- Coordination and consultation with members and outreach to tribes
- Comprehensive tracking of the status of agreements with state and public transportation agencies – a best practice among planning agencies
- Keeping federal agencies informed of planning activities and progress
- Working with the public and partners to identify aggressive approaches to reduce greenhouse gas emissions
- Well-established, competitive process for allocating discretionary FTA and FHWA funds
- Incorporating equity into the overall work program

Improving accessibility of digital information

PSRC has been working to improve accessibility of the agency's online resources, including the website and electronic documents. Staff participated in trainings on how to make Word, Adobe Acrobat and Adobe InDesign documents accessible for people who use screen readers, have low vision or have other special needs. In 2019, the agency will add closed captioning and improved accessibility for meeting agendas.





MEMBERSHIP

COUNTIES—King County—Kitsap County—Pierce County—Snohomish County

CITIES AND TRIBES—Algona—Arlington—Auburn—Bainbridge Island—Beaux Arts Village—Bellevue—Black Diamond—Bonney Lake—Bothell—Bremerton—Buckley—Burien—Clyde Hill—Covington—Darrington—Des Moines—DuPont—Duvall—Eatonville—Edgewood—Edmonds—Enumclaw—Everett—Federal Way—Fife—Fircrest—Gig Harbor—Granite Falls—Hunts Point—Issaquah—Kenmore—Kent—Kirkland—Lake Forest Park—Lake Stevens—Lakewood—Lynnwood—Maple Valley—Marysville—Medina—Mercer Island—Mill Creek—Milton—Monroe—Mountlake Terrace—Muckleshoot Indian Tribe—Mukilteo—Newcastle—Normandy Park—North Bend—Orting—Pacific—Port Orchard—Poulsbo—Puyallup—Puyallup Tribe of Indians—Redmond—Renton—Roy—Ruston—Sammamish—SeaTac—Seattle—Shoreline—Skykomish—Snohomish—Snoqualmie—Stanwood—Steilacoom—Sultan—Sumner—Tacoma—The Suquamish Tribe—Tukwila—University Place—Wilkeson—Woodinville—Woodway—Yarrow Point

STATUTORY MEMBERS—Port of Bremerton—Port of Everett—Port of Seattle—Port of Tacoma—Washington State Department of Transportation—Washington Transportation Commission

ASSOCIATE MEMBERS—Alderwood Water & Wastewater District—Port of Edmonds—Island County—Puget Sound Partnership—Thurston Regional Planning Council—Tulalip Tribes—University of Washington—Washington State University

TRANSIT AGENCIES—Community Transit—Everett Transit—Kitsap Transit—Metro—Pierce Transit—Sound Transit

Americans with Disabilities Act (ADA) Information:

Individuals requiring reasonable accommodations may request written materials in alternate formats, sign language interpreters, physical accessibility accommodations, or other reasonable accommodations by contacting the ADA Coordinator, Thu Le, at 206-464-6175, with two weeks advance notice. Persons who are deaf or hard of hearing may contact the ADA Coordinator, Thu Le, through TTY Relay 711.

Funding for this document provided in part by member jurisdictions, grants from U.S. Department of Transportation, Federal Transit Administration, Federal Highway Administration and Washington State Department of Transportation. **Title VI Notice:** PSRC fully complies with Title VI of the Civil Rights Act of 1964 and related statutes and regulations in all programs and activities. For more information, or to obtain a Title VI Complaint Form, see <https://www.psrc.org/title-vi> or call 206-587-4819.

Additional copies of this document may be obtained by contacting:

Puget Sound Regional Council • Information Center
1011 Western Avenue, Suite 500
Seattle, Washington 98104-1035
206-464-7532 • info@psrc.org • psrc.org





Remembering the Oso landslide

A sculpture was unveiled on the fifth anniversary of the Oso landslide, recreating the row of mailboxes belonging to the 43 people killed in the Oso landslide on March 22, 2014. It is part of a larger memorial planned by the families of those who perished five years ago. The memorial will honor those who were lost, the survivors, the responders and the surrounding communities.

